

Sheet 2

- EQUIPMENT SONAR MAPPED JUNE 1972
- TOPOGRAPHIC SYMBOLS
- (B) Brush
 - (PW) Partially wooded
 - (W) Wooded
 - (C) Cleared
 - (P) Pastured
 - (A) Agricultural
 - B.M. Bench Mark
 - Dwelling
 - Resort
 - ⊞ Camp
 - ||||| Steep slope
 - - - Indefinite shoreline
 - Marsh
 - Spring
 - Intermittent stream
 - Permanent inlet
 - Permanent outlet
 - Dam
 - D.N.R. State owned land
- LAKE BOTTOM SYMBOLS
- P. Peat
 - Mk. Muck
 - C. Clay
 - M. Marl
 - Sd. Sand
 - Sl. Silt
 - Gr. Gravel
 - R. Rubble
 - Br. Bedrock
 - B Boulders
 - Stumps & Snags
 - Rock danger to navigation
 - T Submergent vegetation
 - Emergent vegetation
 - Floating vegetation
 - Brush shelters
 - Detritus

300 0 300 600 900 1200

SCALE

◆ Access ◆ Access with Parking ◆ Boat Livery

Drawn by: B. Heide

Field work by: M. Clark

SPECIES OF FISH	Abundant Common Present		
	Abundant	Common	Present
Muskie			X
N. Pike			X
Walleye			X
L.M. Bass			X
S.M. Bass	X		
Panfish		X	
Trotl			

WATER AREA 39.1 ACRES

UNDER 3 FT. 12.3 %

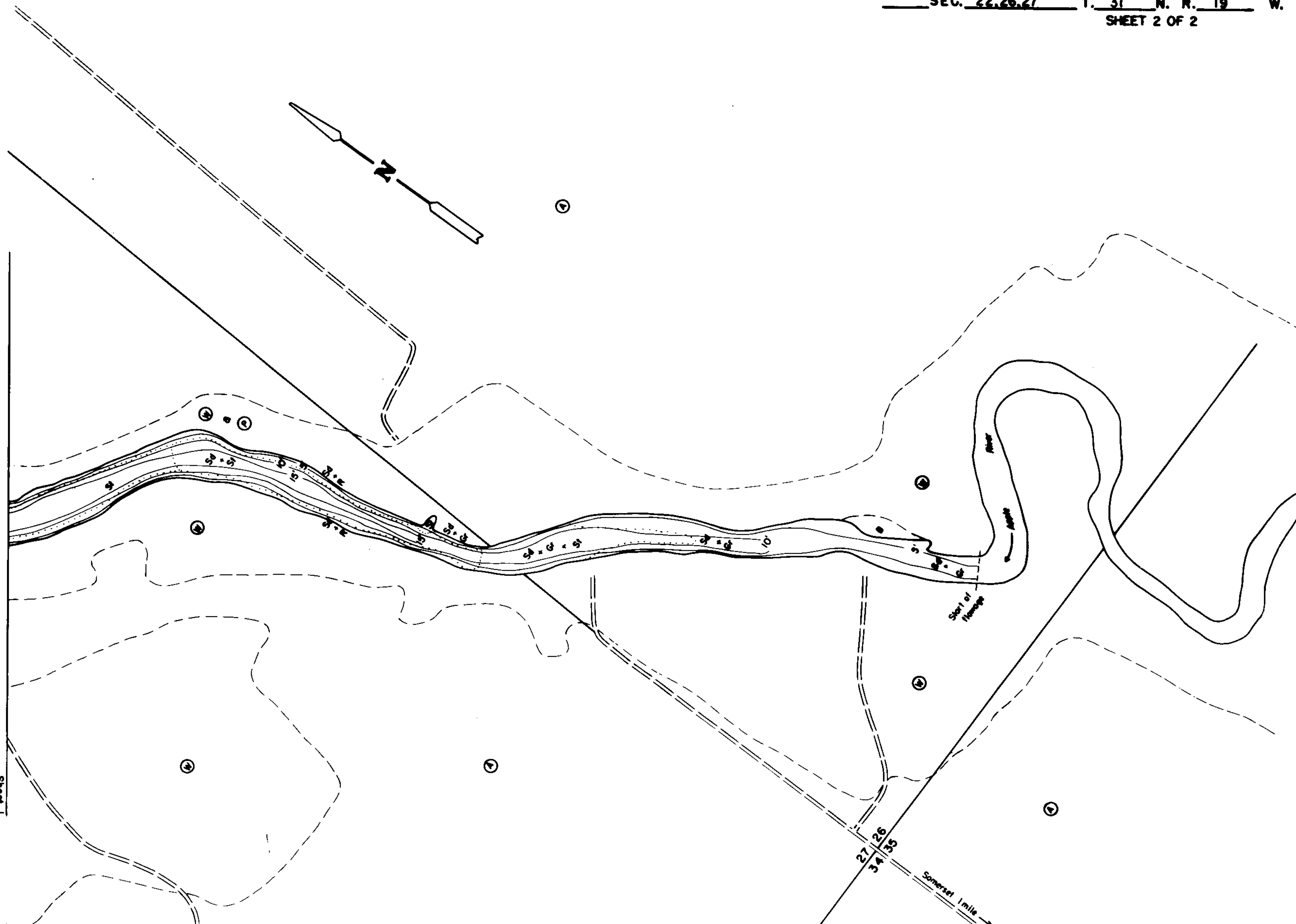
OVER 20 FT. 17.4 %

MAX. DEPTH 40.3 FEET.

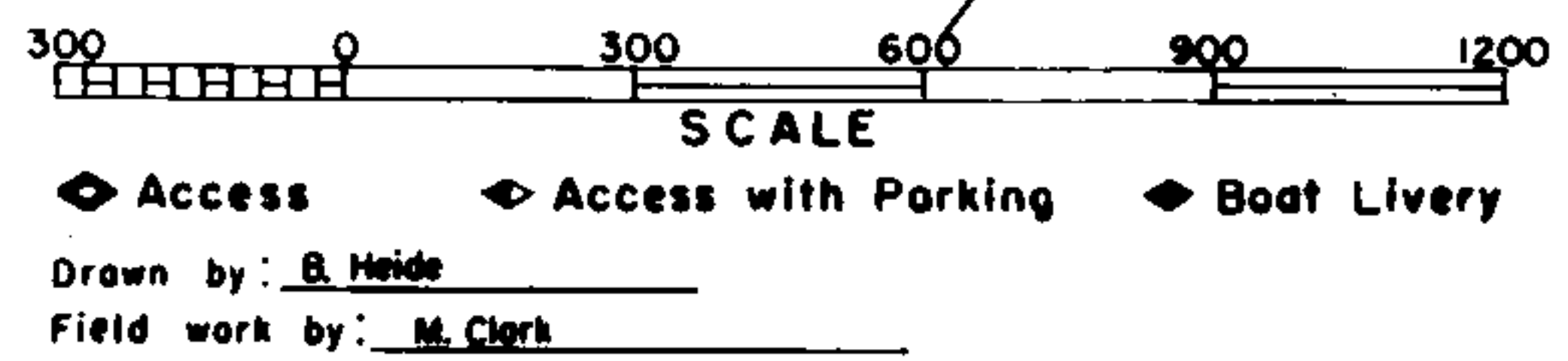
TOTAL ALK. 124 P.P.M.

VOLUME 485.3 ACRE FT.

SHORELINE 3.27 MILES



- EQUIPMENT MAPPED JUNE 1972
- | TOPOGRAPHIC SYMBOLS | | LAKE BOTTOM SYMBOLS | |
|-----------------------|----------------------------|---------------------|-----------------------------|
| (B) Brush | Steep slope | P. Peat | B Boulders |
| (PW) Partially wooded | - - - Indefinite shoreline | Mk. Muck | ⊙ Stumps & Snags |
| (W) Wooded | Marsh | C. Clay | ⊙ Rock danger to navigation |
| (C) Cleared | Spring | M. Marl | T Submergent vegetation |
| (P) Pastured | Intermittent stream | Sd. Sand | ⊥ Emergent vegetation |
| (A) Agricultural | Permanent inlet | St. Silt | ⊥ Floating vegetation |
| B.M. Bench Mark | Permanent outlet | Gr. Gravel | ↘ Brush shelters |
| ■ Dwelling | Dam | R. Rubble | Dt. Detritus |
| □ Resort | D.N.R. State owned land | Bc. Bedrock | |
| □ Camp | | | |



SPECIES OF FISH	Abundant Common Present		
	Abundant	Common	Present
Muskie			X
N. Pike			X
Walleye			X
L.M. Bass			X
S.M. Bass	X		
Panfish	X		
Trout			

WATER AREA 39.1 ACRES
 UNDER 3 FT. 12.3 %
 OVER 20 FT. 17.4 %
 MAX. DEPTH 40.3 FEET.
 TOTAL ALK. 124 P.P.M.
 VOLUME 485.3 ACRE FT.
 SHORELINE 3.27 MILES

Source: Wisconsin Department of Natural Resources 608-266-2621
Apple Falls Flowage – St. Croix County, Wisconsin DNR Lake Map
Date – Jun 1972 - Historical Lake Map - Not for Navigation
A Public Document - Please Identify the Source when using it.