

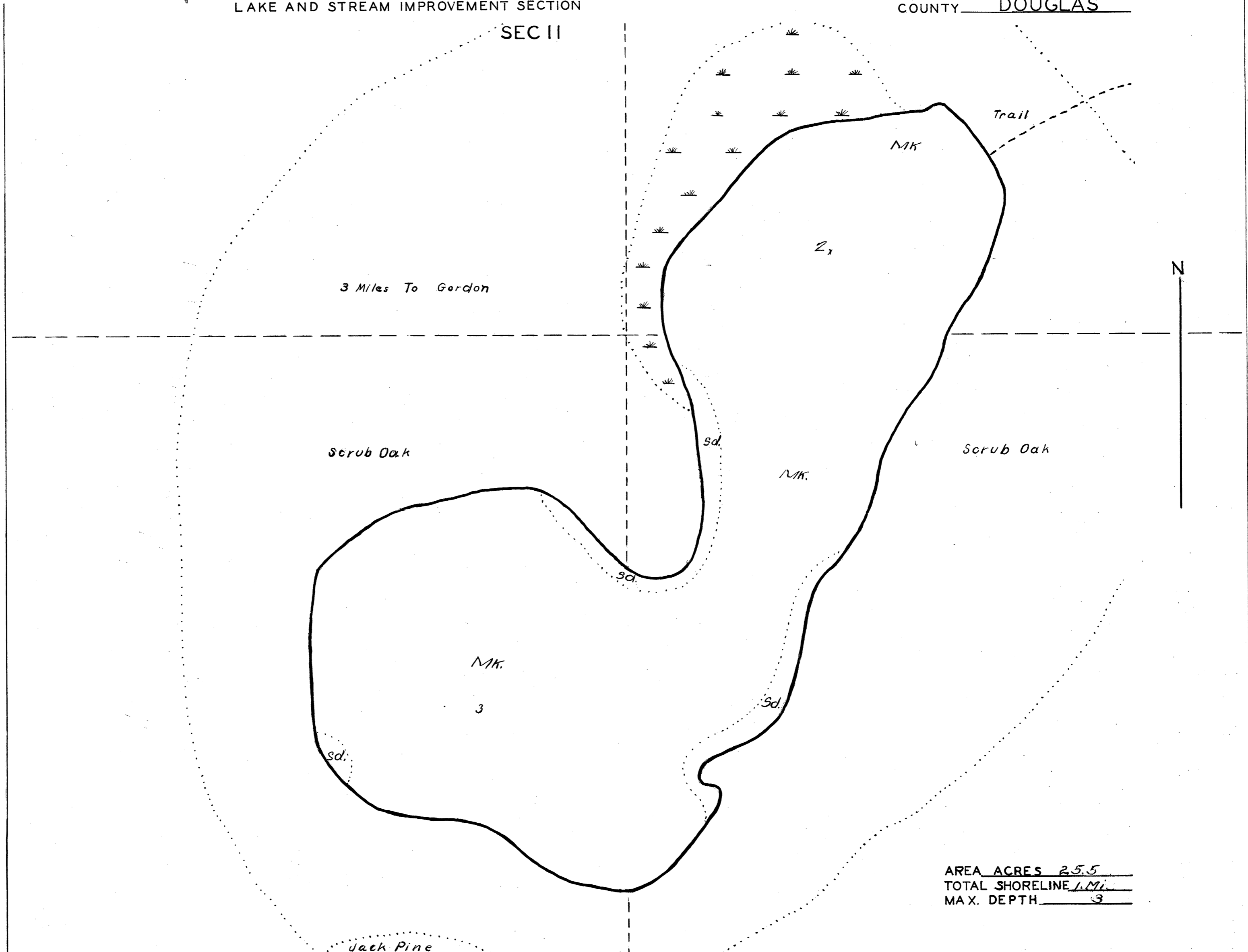
LAKE SURVEY MAP

LAKE LONG
 SECTION 11
 TOWNSHIP 43 N
 RANGE 12 W
 TOWN OF WASCOTT
 COUNTY DOUGLAS

FORM FH-117

WISCONSIN CONSERVATION DEPARTMENT
 BIOLOGY DIVISION
 LAKE AND STREAM IMPROVEMENT SECTION

SEC II



AREA ACRES 25.5
 TOTAL SHORELINE 1.1 Mi.
 MAX. DEPTH 3

DATE Dec. 9 13 40
 COMPILED BY _____
 TRACED BY NLM (WPA)
 SOURCE OF INFORMATION
WPA Lake Improvement
Project
 SOUNDINGS SA+165 foot Intervals
 DATES OF MAP REVISION _____
 WORK AGENCY W. P. A.

*Checked
 W.P.S.
 E.M.K.
 6/2/40*

LAKE IMPROVEMENT RECORD

TYPE	DATE			
BRUSH REFUGES				
SAPLING TANGLES				
SPAWNING BOXES				
MINNOW SPAWNERS				
TOTAL				

SCALE 1 Inch Equals 165 ft.

- LEGEND
- WEED BEDS
 - ROCKY SHOALS
 - Sd SAND
 - Cl CLAY
 - Mk MUCK
 - G GRAVEL
 - DWELLING
 - ABANDONED DWELLING
 - RESORT

Source: Wisconsin Department of Natural Resources 608-266-2621
Long Lake - Douglas County, Wisconsin DNR Lake Map
Dec. 1940 Historical Lake Map Not for Navigation
A Public Document - Please Identify the Source when using it.