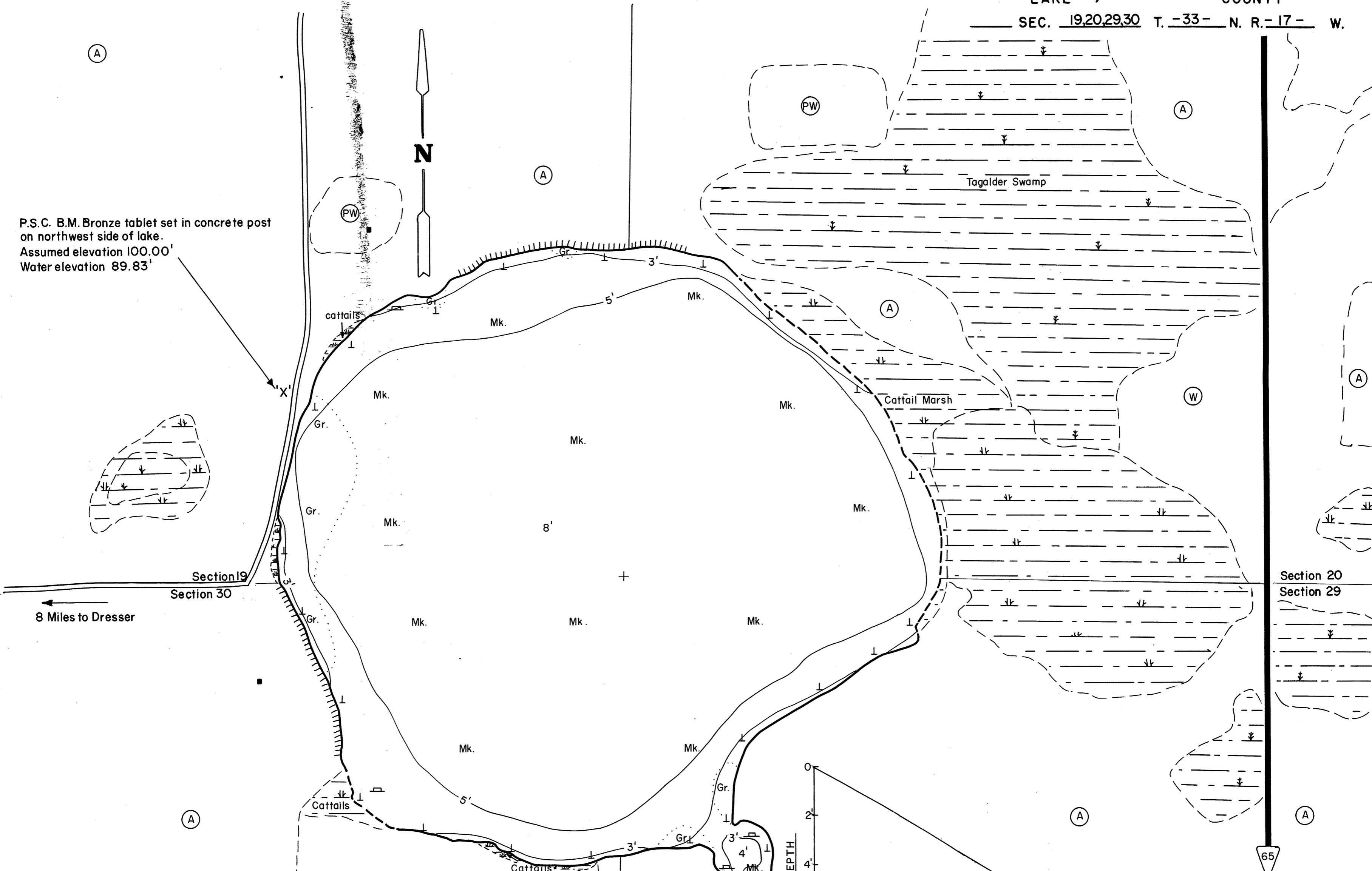


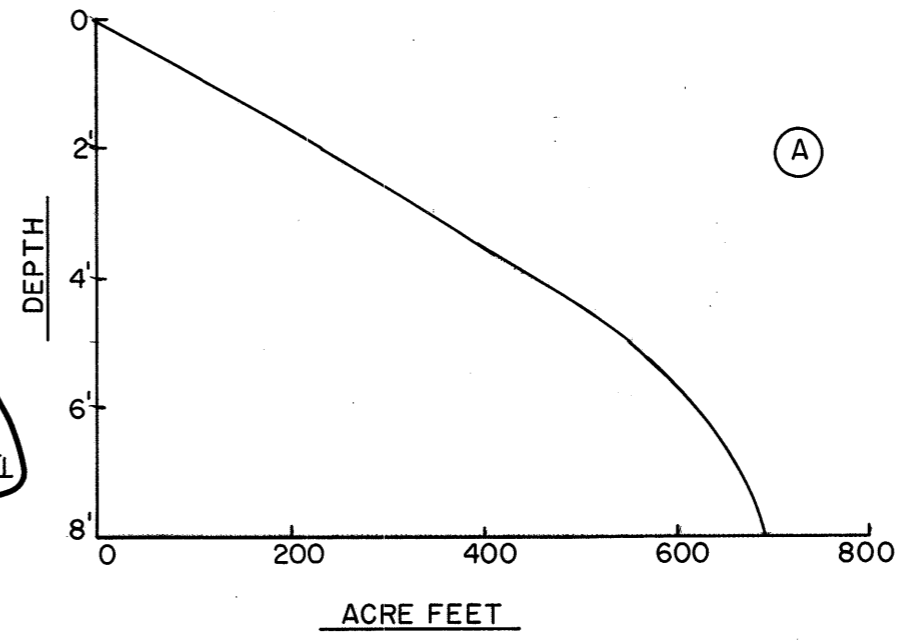
P.S.C. B.M. Bronze tablet set in concrete post on northwest side of lake.
 Assumed elevation 100.00'
 Water elevation 89.83'



8 Miles to Dresser

Section 19
 Section 30

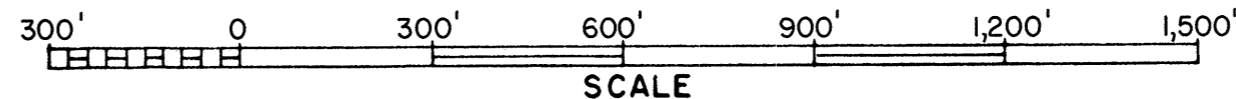
Section 20
 Section 29



SPECIES OF FISH		
	Abundant	Rare
Muskie		
N. Pike		
Walleye		
L.M. Bass	X	
S.M. Bass		
Panfish	X	
Trout		

EQUIPMENT RECORDING SONAR MAPPED JULY 1967
 TOPOGRAPHIC SYMBOLS MO. YR.
 WATER ELEV. 89.83'

- | | | |
|-----------------------|----------------------------|-------------------------|
| (B) Brush | Steep slope | LAKE BOTTOM SYMBOLS |
| (PW) Partially wooded | - - - Indefinite shoreline | P. Peat |
| (W) Wooded | Marsh | Gr. Gravel |
| (C) Cleared | o Spring | Stumps & Snags |
| (P) Pastured | - - - Intermittent stream | Mk. Muck |
| (A) Agricultural | ==== Permanent inlet | C. Clay |
| B.M. Bench Mark | ==== Permanent outlet | R. Rubble |
| ■ Dwelling | ⌋ Dam | Br. Bedrock |
| □ Resort | | T Submergent vegetation |
| | | ⌋ Emergent vegetation |
| | | ⌋ Floating vegetation |



◇ Access ◆ Access with Parking ◆ Boat Livery
 Field work by: C. Busch, G. Winter, L. Sather. Drawn by: J. Roth

AREA 119.8 ACRES
 UNDER 3FT. 4.6 %
 OVER 20FT. 0.0 %
 VOLUME 693.8 ACRE FT.
 TOTAL ALK. 36 P.P.M.
 SHORELINE 1.8 MILES
 MAX. DEPTH 8 FEET

Source: Wisconsin Department of Natural Resources 608-266-2621
Garfield Lake (Big Horseshoe Lake) – Polk County, Wisconsin DNR Lake Map
Date – Jul 1967 - Historical Lake Map - Not for Navigation
A Public Document - Please Identify the Source when using it.