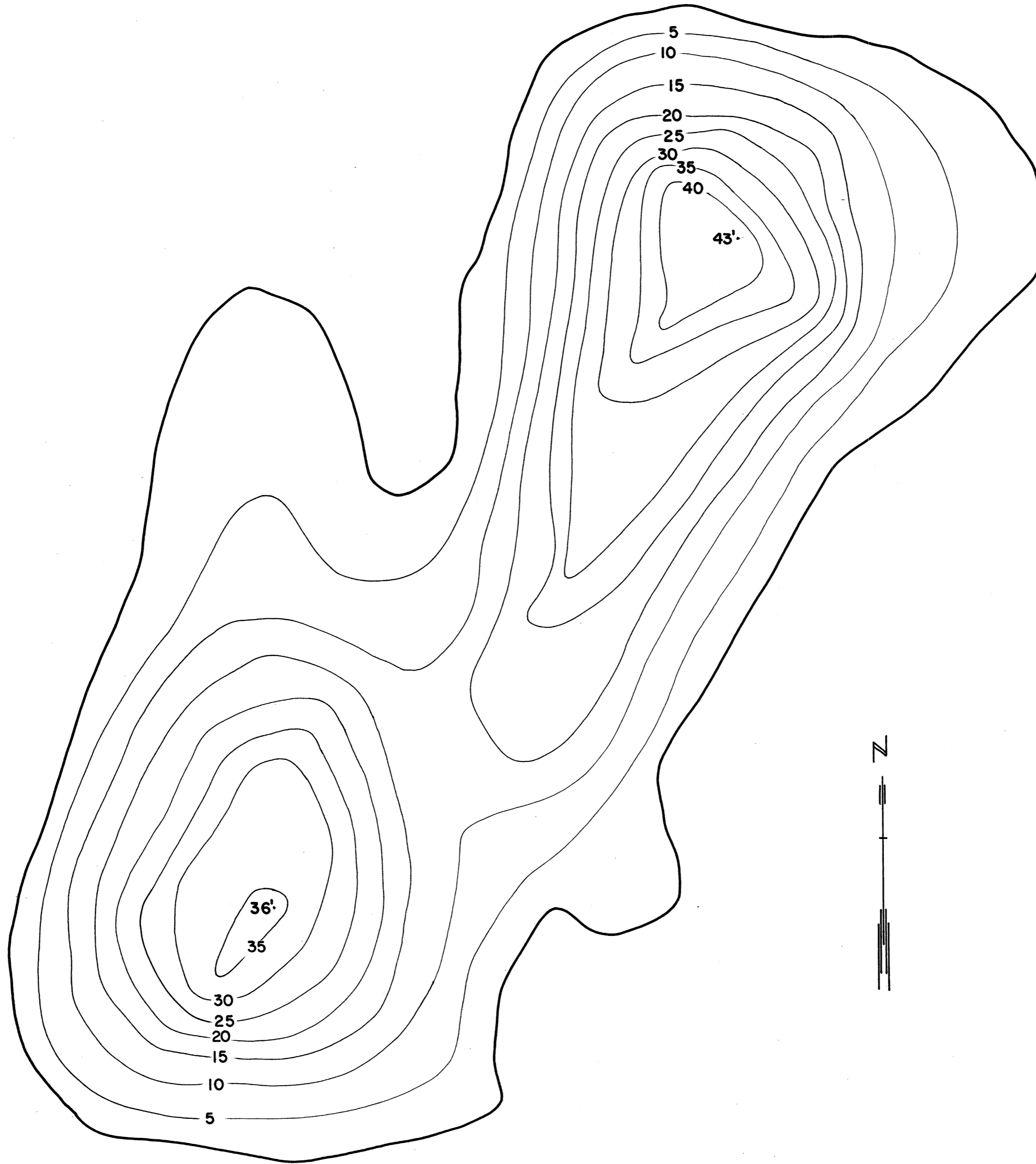


LAKE PICKEREL, *Crescent*  
SECTIONS 25-36  
TOWNSHIP T. 36 N.  
RANGE R. 16 W.  
TOWN BONE LAKE  
COUNTY POLK



LAKE MAPPED 1/58  
SOURCE OF INFORMATION \_\_\_\_\_  
SOUNDINGS Through ice

AREA 17.2 Acres  
TOTAL SHORELINE 0.82 Miles  
MAX. DEPTH 43'  
SCALE: 1"=100'

Source: Wisconsin Department of Natural Resources 608-266-2621  
Crescent Lake (Pickerel Lake)– Polk County, Wisconsin DNR Lake Map  
Date – Jan 1958 - Historical Lake Map - Not for Navigation  
A Public Document - Please Identify the Source when using it.