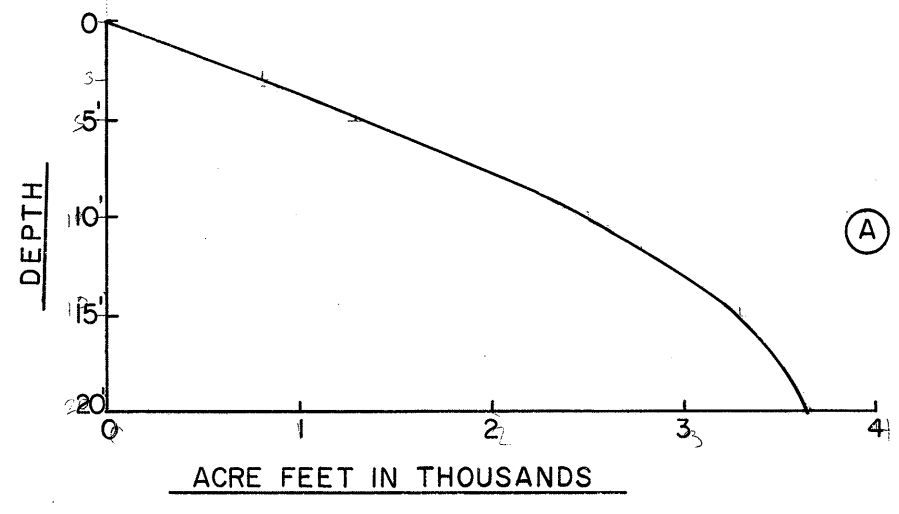
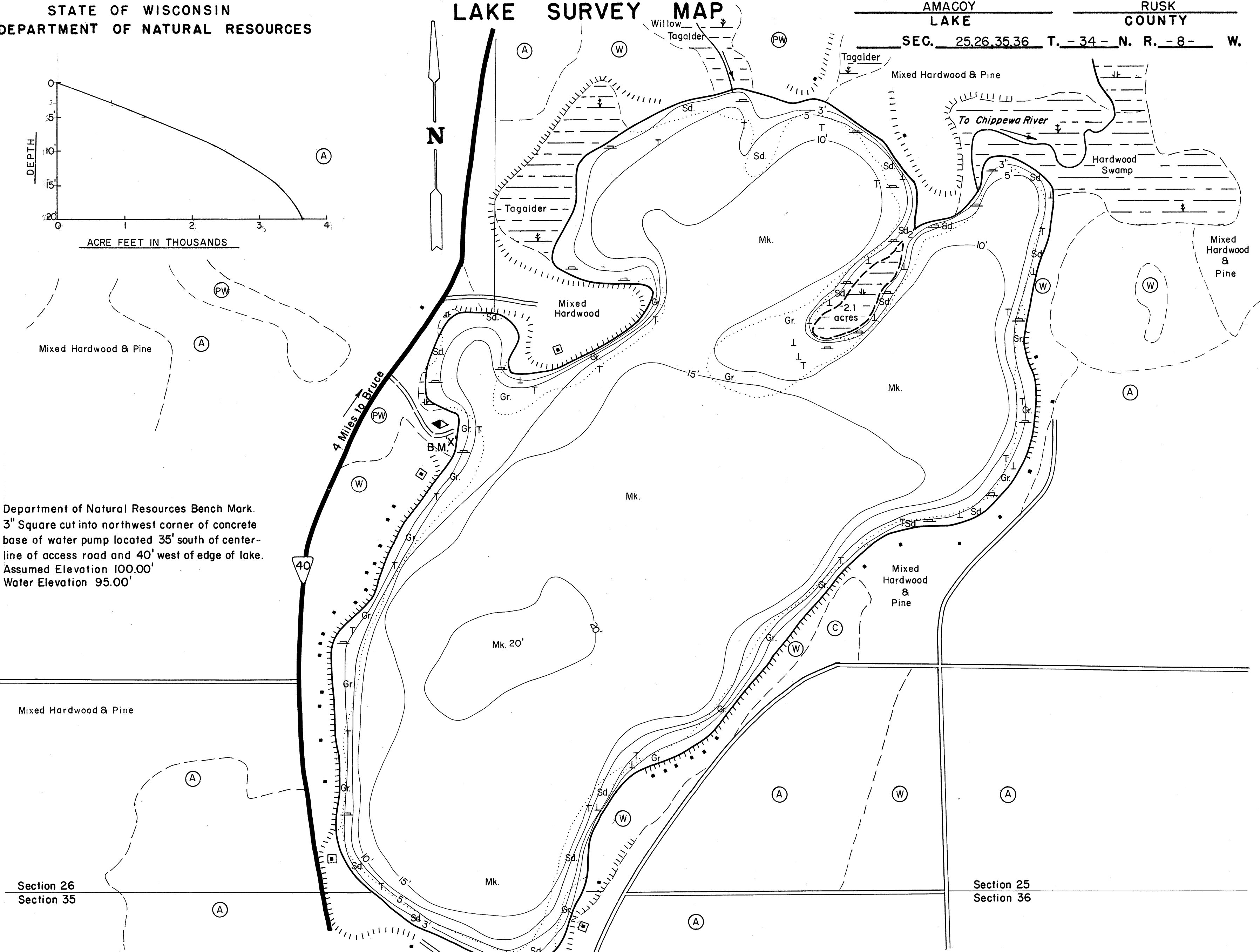


LAKE SURVEY MAP



Department of Natural Resources Bench Mark.
3" Square cut into northwest corner of concrete
base of water pump located 35' south of center-
line of access road and 40' west of edge of lake.
Assumed Elevation 100.00'
Water Elevation 95.00'



EQUIPMENT RECORDING SONAR MAPPED JULY 1969

- TOPOGRAPHIC SYMBOLS
- (B) Brush
 - (PW) Partially wooded
 - (W) Wooded
 - (C) Cleared
 - (P) Pastured
 - (A) Agricultural
 - B.M. Bench Mark
 - Dwelling
 - Resort
 - ⊠ Camp
 - ||||| Steep slope
 - - - Indefinite shoreline
 - ⊞ Marsh
 - Spring
 - - - Intermittent stream
 - ==== Permanent inlet
 - ==== Permanent outlet
 - ⊞ Dam
 - D.N.R. State owned land
 - P. Peat
 - Mk. Muck
 - C. Clay
 - M. Marl
 - Sd. Sand
 - St. Silt
 - Gr. Gravel
 - R. Rubble
 - Bc. Bedrock
 - B Boulders
 - ⊞ Stumps & Snags
 - ⊞ Rock danger to navigation
 - T Submergent vegetation
 - ⊞ Emergent vegetation
 - ⊞ Floating vegetation
 - ⊞ Brush shelters



◆ Access ◆ Access with Parking ◆ Boat Livery

Drawn by: J. Roth
Field work by: C. Busch, C. Belter, S. Johannes

SPECIES OF FISH

	Abundant	Common	Present
Muskie			X
N. Pike	X		
Walleye	X		
L.M. Bass	X		
S.M. Bass			
Panfish	X		
Trout			

WATER AREA 278.0 ACRES
 UNDER 3 FT. 8 %
 OVER 20 FT. 4 %
 MAX. DEPTH 20 FEET.
 TOTAL ALK. 36 P.P.M.
 VOLUME 3,634.8 ACRE FT.
 SHORELINE 3.66 MILES
 3.35 MILES OF SHORELINE
 EXCLUDING ISLAND

Source: Wisconsin Department of Natural Resources 608-266-2621
Amacoy Lake – Rusk County, Wisconsin DNR Lake Map
Date – Jul 1969 - Historical Lake Map - Not for Navigation
A Public Document - Please Identify the Source when using it.