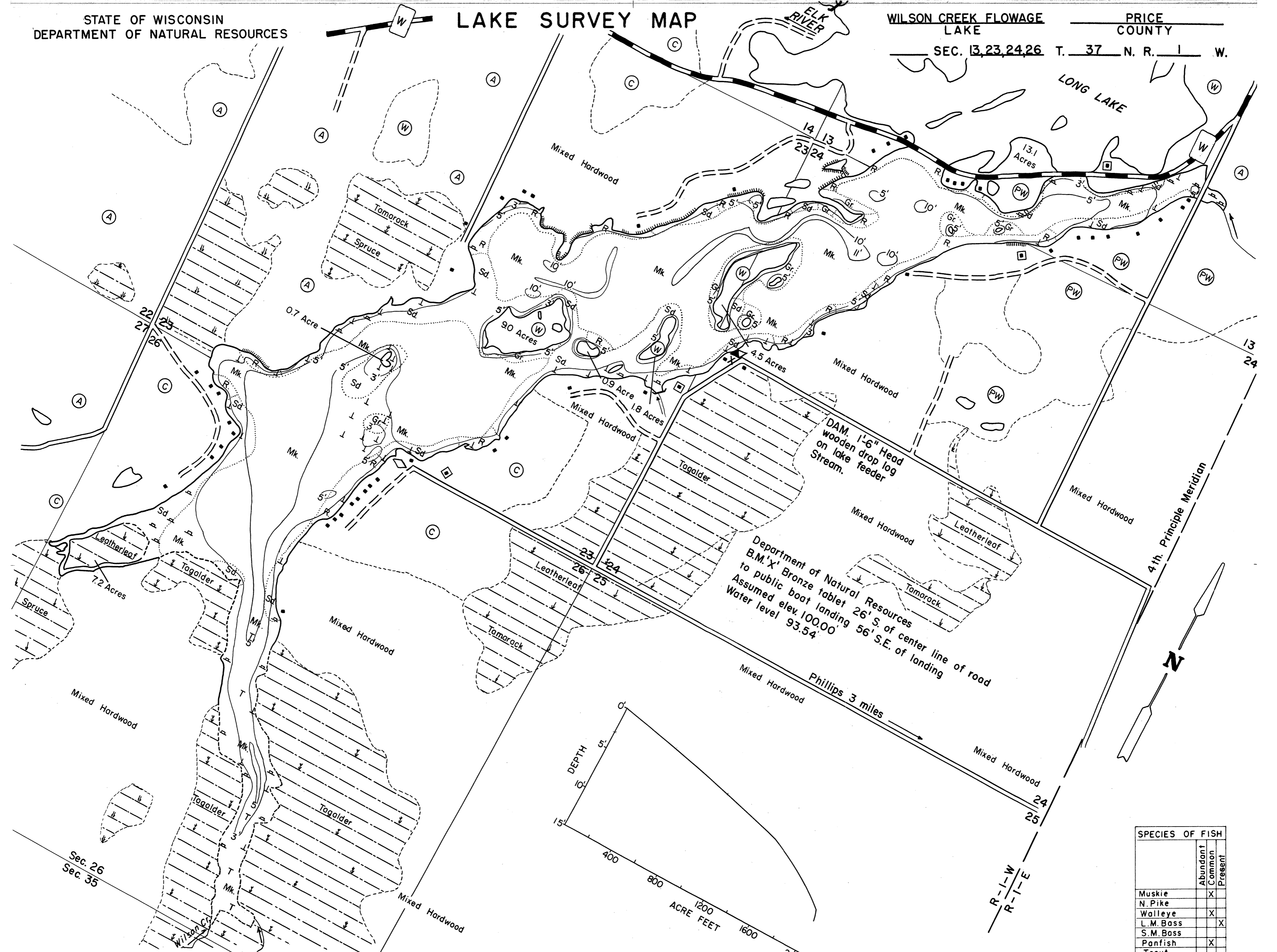


LAKE SURVEY MAP

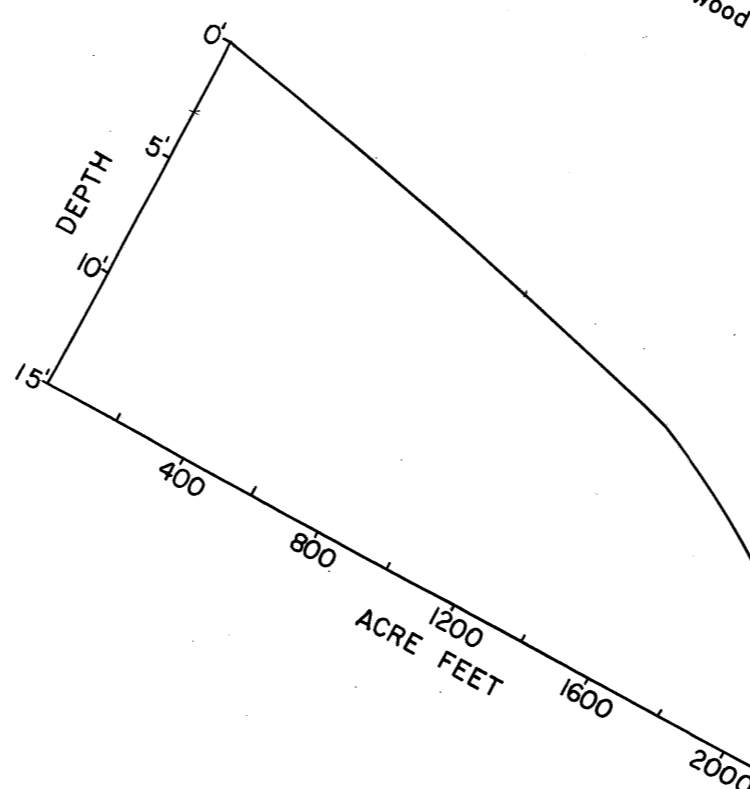
WILSON CREEK FLOWAGE
LAKE
PRICE COUNTY
SEC. 13, 23, 24, 26 T. 37 N. R. 1 W.



DAM. 1'-6" Head
wooden drop log
on lake feeder

Department of Natural Resources
B.M. 'X' Bronze tablet
to public boat landing 26' S. of center line of road
Assumed elev. 100.00'
Water level 93.54'

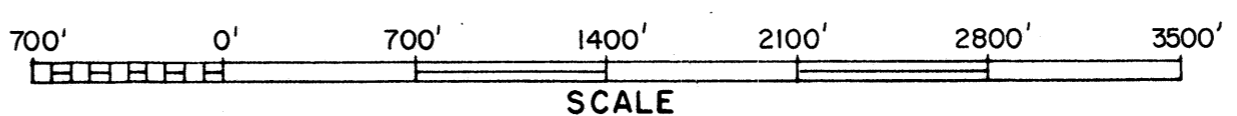
Phillips 3 miles



SPECIES OF FISH			
	Abundant	Common	Present
Muskie		X	
N. Pike			
Walleye	X		
L.M. Bass		X	
S.M. Bass			
Panfish	X		
Trout			

EQUIPMENT RECORDING SONAR MAPPED AUG. 1967
MO. YR.

- TOPOGRAPHIC SYMBOLS
- (B) Brush
 - (PW) Partially wooded
 - (W) Wooded
 - (C) Cleared
 - (P) Pastured
 - (A) Agricultural
 - B.M. Bench Mark
 - Dwelling
 - Resort
 - ||||| Steep slope
 - - - Indefinite shoreline
 - Marsh
 - Spring
 - Intermittent stream
 - Permanent inlet
 - Permanent outlet
 - Dam
- LAKE BOTTOM SYMBOLS
- P. Peat
 - Mk. Muck
 - C. Clay
 - M. Marl
 - Sd. Sand
 - St. Silt
 - Gr. Gravel
 - R. Rubble
 - Br. Bedrock
 - T Submergent vegetation
 - ↓ Emergent vegetation
 - ⊕ Floating vegetation
 - ⊗ Stumps & Snags
- WATER ELEV. 93.54'



◇ Access ◆ Access with Parking ◆ Boat Livery

Field work by: C. Busch, G. Winter, L. Sother Drawn by: C. Holt

AREA 351.4 ACRES
UNDER 3FT. 16.7 %
OVER 20FT. 0 %
VOLUME 2028.3 ACRE FT.
TOTAL ALK. 51 P.P.M.
SHORELINE 8.0 MILES
MAX. DEPTH 11 FEET

Source: Wisconsin Department of Natural Resources 608-266-2621
Wilson Creek Flowage – Price County, Wisconsin DNR Lake Map
Date – Aug 1967 - Historical Lake Map - Not for Navigation
A Public Document - Please Identify the Source when using it.