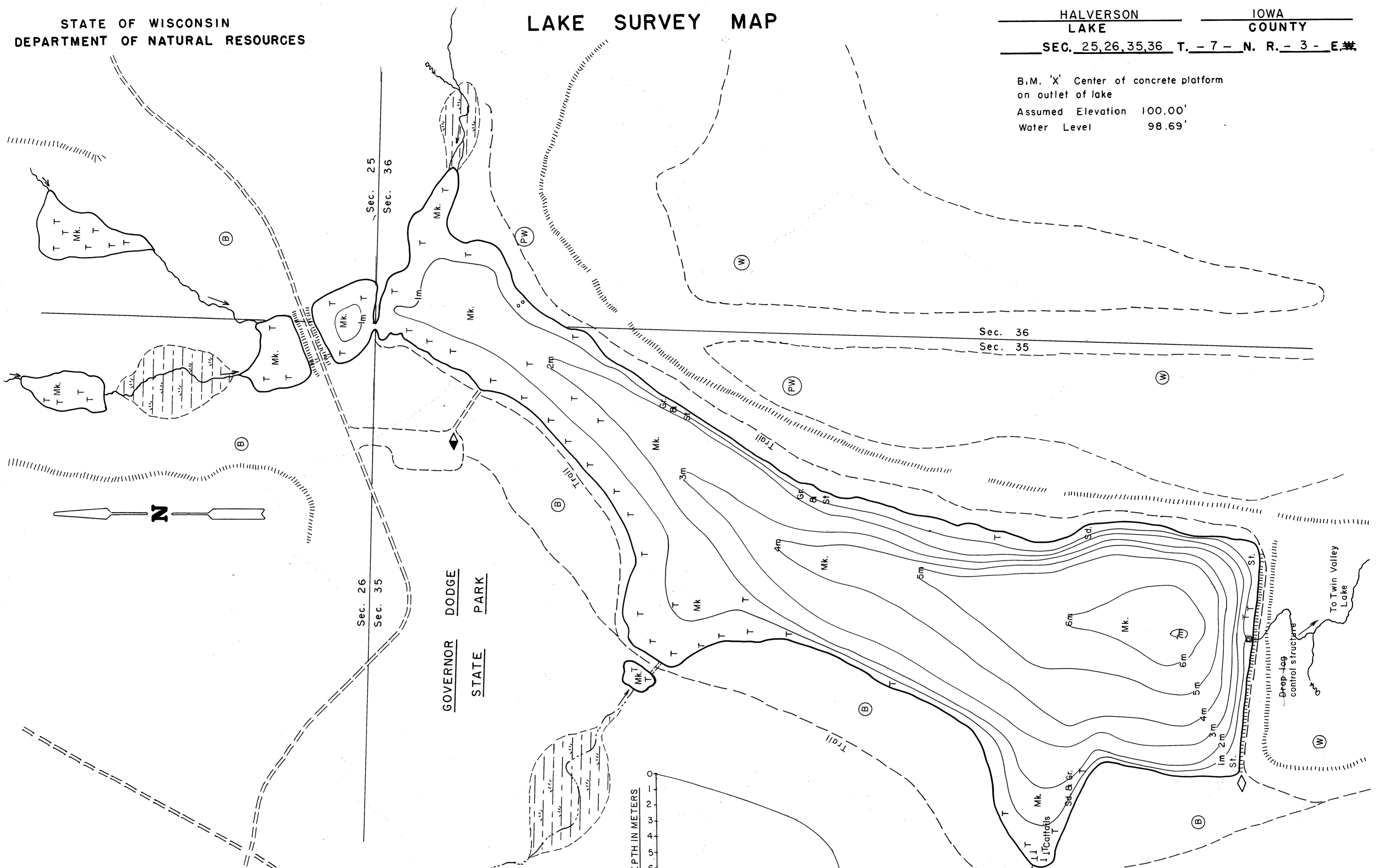


# LAKE SURVEY MAP

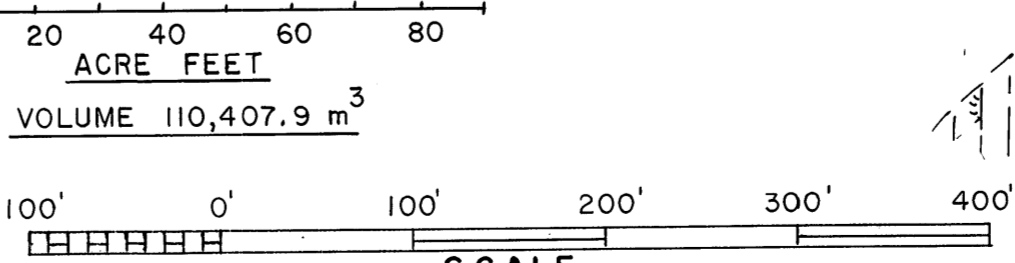
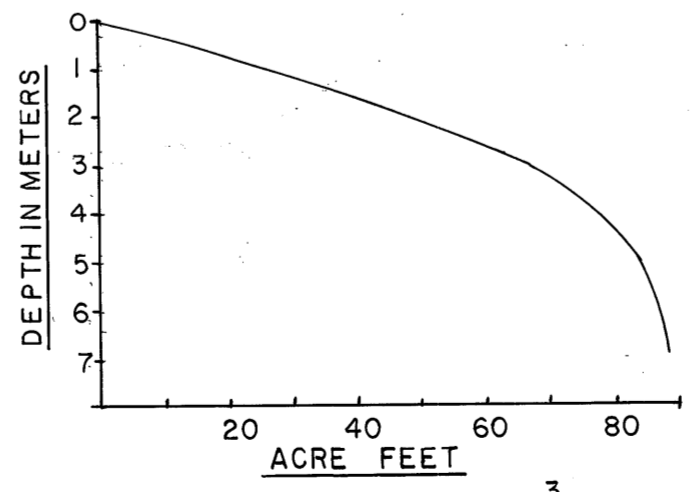
HALVERSON LAKE IOWA COUNTY  
SEC. 25, 26, 35, 36 T. - 7 - N. R. - 3 - E. #

B.M. 'X' Center of concrete platform  
on outlet of lake  
Assumed Elevation 100.00'  
Water Level 98.69'



EQUIPMENT HAND LINE THROUGH MAPPED JANUARY 1978  
MONTH YEAR  
LAKE BOTTOM SYMBOLS

- |                       |                               |             |                             |
|-----------------------|-------------------------------|-------------|-----------------------------|
| TOPOGRAPHIC SYMBOLS   |                               | P. Peat     | B. Boulders                 |
| (B) Brush             | Steep slope                   | Mk. Muck    | o Stumps & Snags            |
| (PW) Partially wooded | ----- Indefinite shoreline    | C. Clay     | ⊕ Rock danger to navigation |
| (W) Wooded            | ----- Marsh                   | M. Marl     | T Submergent vegetation     |
| (C) Cleared           | o Spring                      | Sd. Sand    | ⊥ Emergent vegetation       |
| (P) Pastured          | ----- Intermittent stream     | St. Silt    | ⊥ Floating vegetation       |
| (A) Agricultural      | ----- Permanent inlet         | Gr. Gravel  | ⊕ Brush shelters            |
| B.M. Bench Mark       | ----- Permanent outlet        | R. Rubble   |                             |
| ■ Dwelling            | ----- Dam                     | Br. Bedrock |                             |
| □ Resort              | ----- D.N.R. State owned land |             |                             |
| ⊠ Camp                |                               |             |                             |



Access Access with Parking Boat Livery  
Drawn by: E. Eaton  
Field work by: S. Engel, D. Bush, W. Wojner

SPECIES OF FISH	Abundance		
	Abundant	Common	Present
Muskie			
N. Pike			
Walleye			
L.M. Bass	X		
S.M. Bass			
Panfish	X		
Trout			

WATER AREA 4.17 HECTARES  
10.3 ACRES  
UNDER 3 FT. 20 %  
OVER 20 FT. 1 %  
MAX. DEPTH 23.3 FEET.  
TOTAL ALK. 122 P.P.M.  
VOLUME 89.49 ACRE FT.  
MAIN SHORELINE .89 MI.  
ISLAND SHORELINE \_\_\_\_\_ MI.

Source: Wisconsin Department of Natural Resources 608-266-2621  
Halverson Lake – Iowa County, Wisconsin DNR Lake Map  
Date – Jan 1978 - Historical Lake Map - Not for Navigation  
A Public Document - Please Identify the Source when using it.