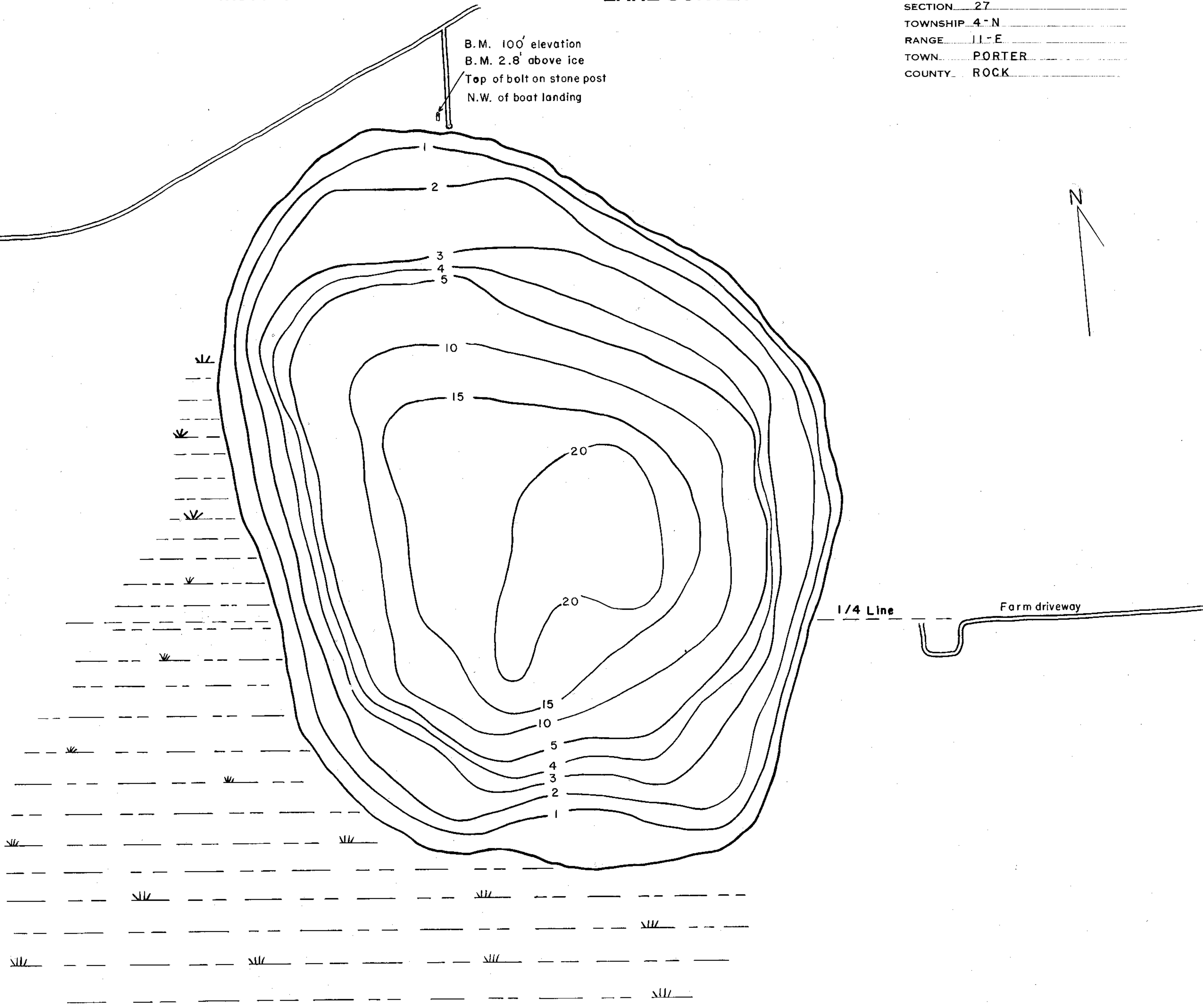


LAKE GIBBS
SECTION 27
TOWNSHIP 4-N
RANGE 11-E
TOWN PORTER
COUNTY ROCK

B.M. 100' elevation
B.M. 2.8' above ice
Top of bolt on stone post
N.W. of boat landing



DATE 1-7-54
SOURCE OF INFORMATION
W.C.D. lakes survey grids on ice
SOUNDINGS 400' intervals

AREA 64.85 acres
TOTAL SHORELINE 1.15 miles
MAX. DEPTH 23 ft.
SCALE: 1" = 200'

Farm driveway

Source: Wisconsin Department of Natural Resources 608-266-2621
Gibbs Pond – Rock County, Wisconsin DNR Lake Map
Date – Jan 1954 - Historical Lake Map - Not for Navigation
A Public Document - Please Identify the Source when using it.