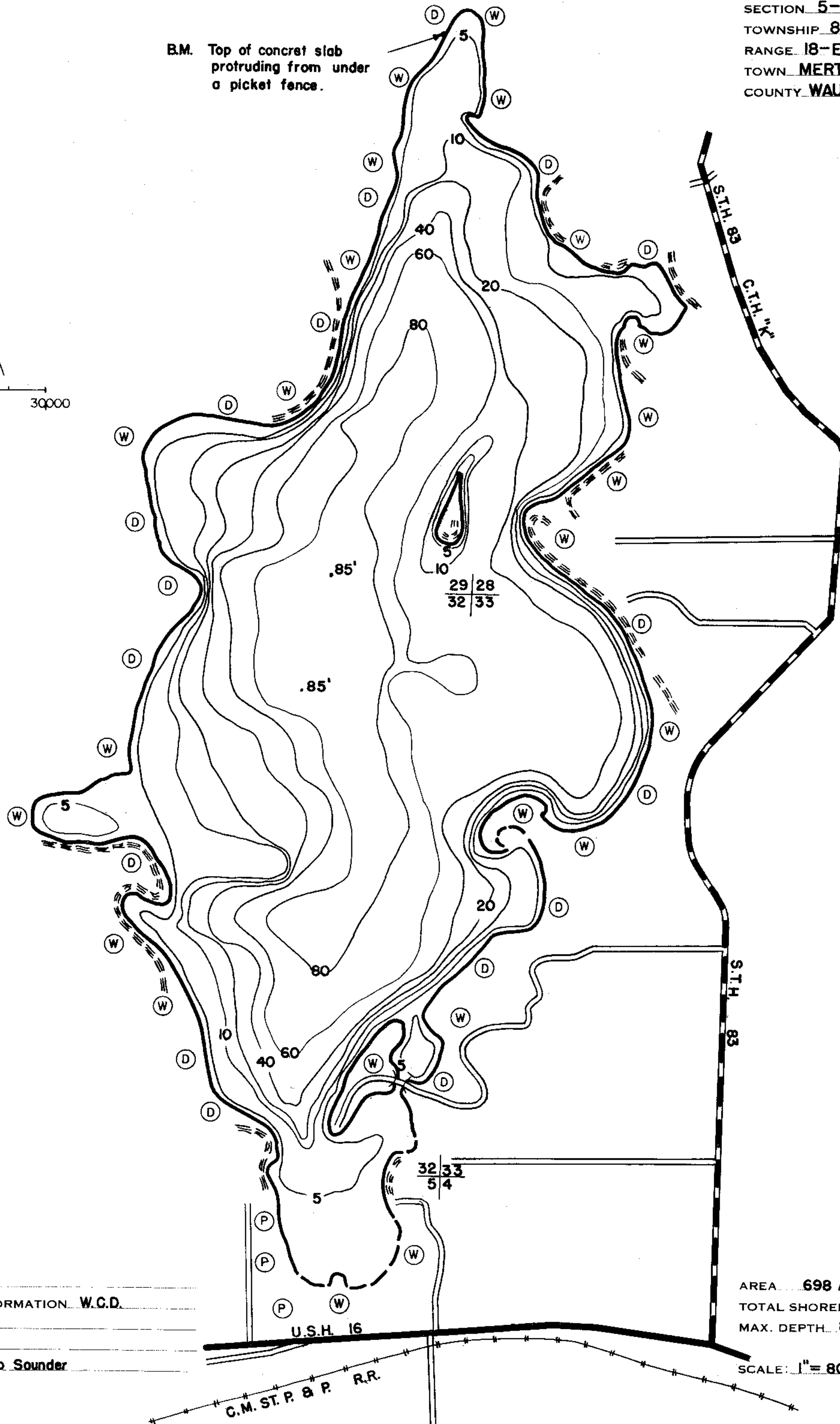
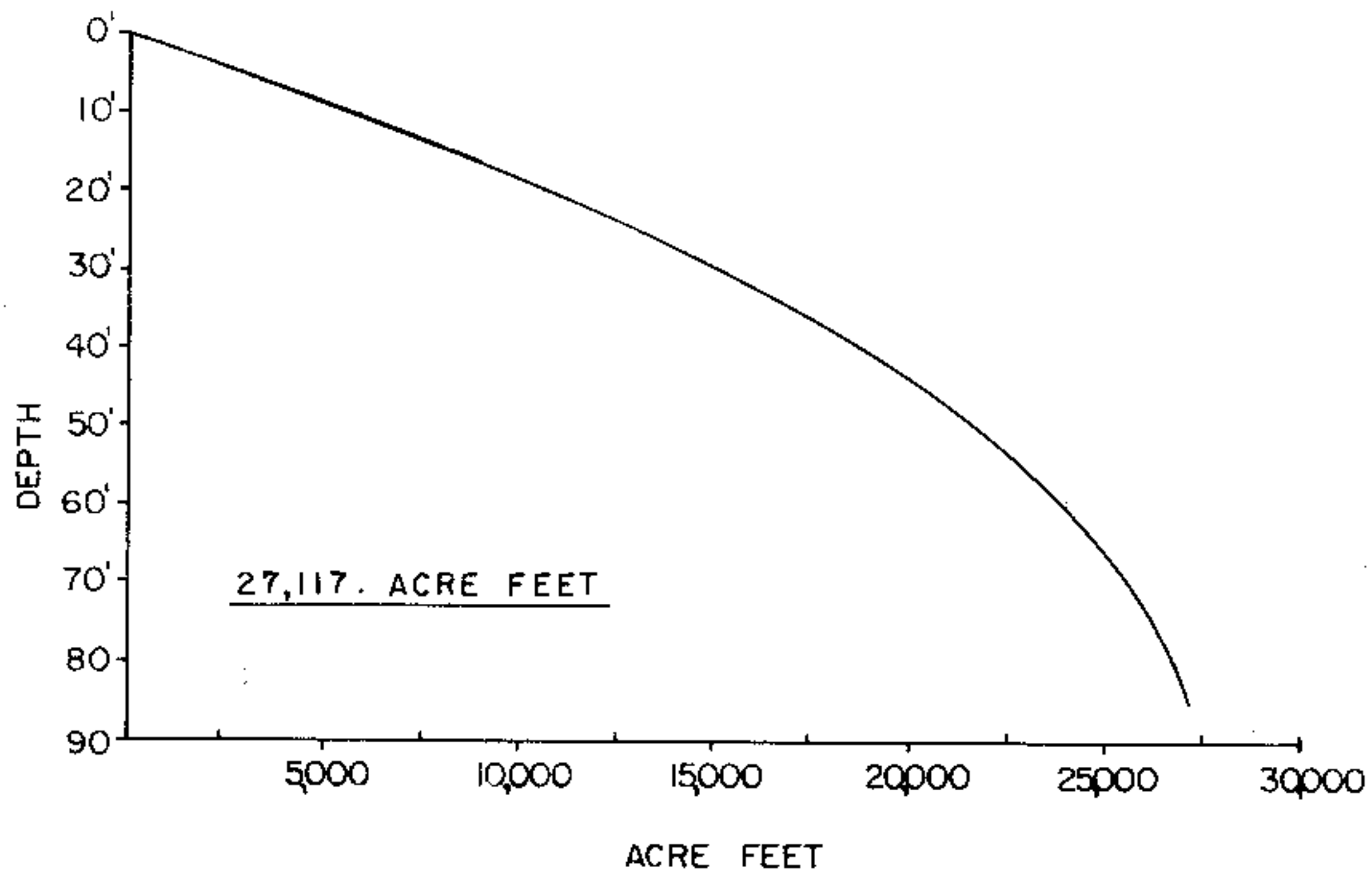


LAKE PINE
 SECTION 5-28-29-32-33
 TOWNSHIP 8-N
 RANGE 18-E
 TOWN MERTON
 COUNTY WAUKESHA

B.M. Top of concret slab protruding from under a picket fence.



DATE 6/6/55
 SOURCE OF INFORMATION W.C.D.
 SOUNDINGS Echo Sounder

AREA 698 Acres
 TOTAL SHORELINE 6.7 Miles
 MAX. DEPTH 85 Feet
 SCALE: 1" = 800'

Source: Wisconsin Department of Natural Resources 608-266-2621
Pine Lake – Waukesha County, Wisconsin DNR Lake Map
Date – Jun 1955 - Historical Lake Map - Not for Navigation
A Public Document - Please Identify the Source when using it.