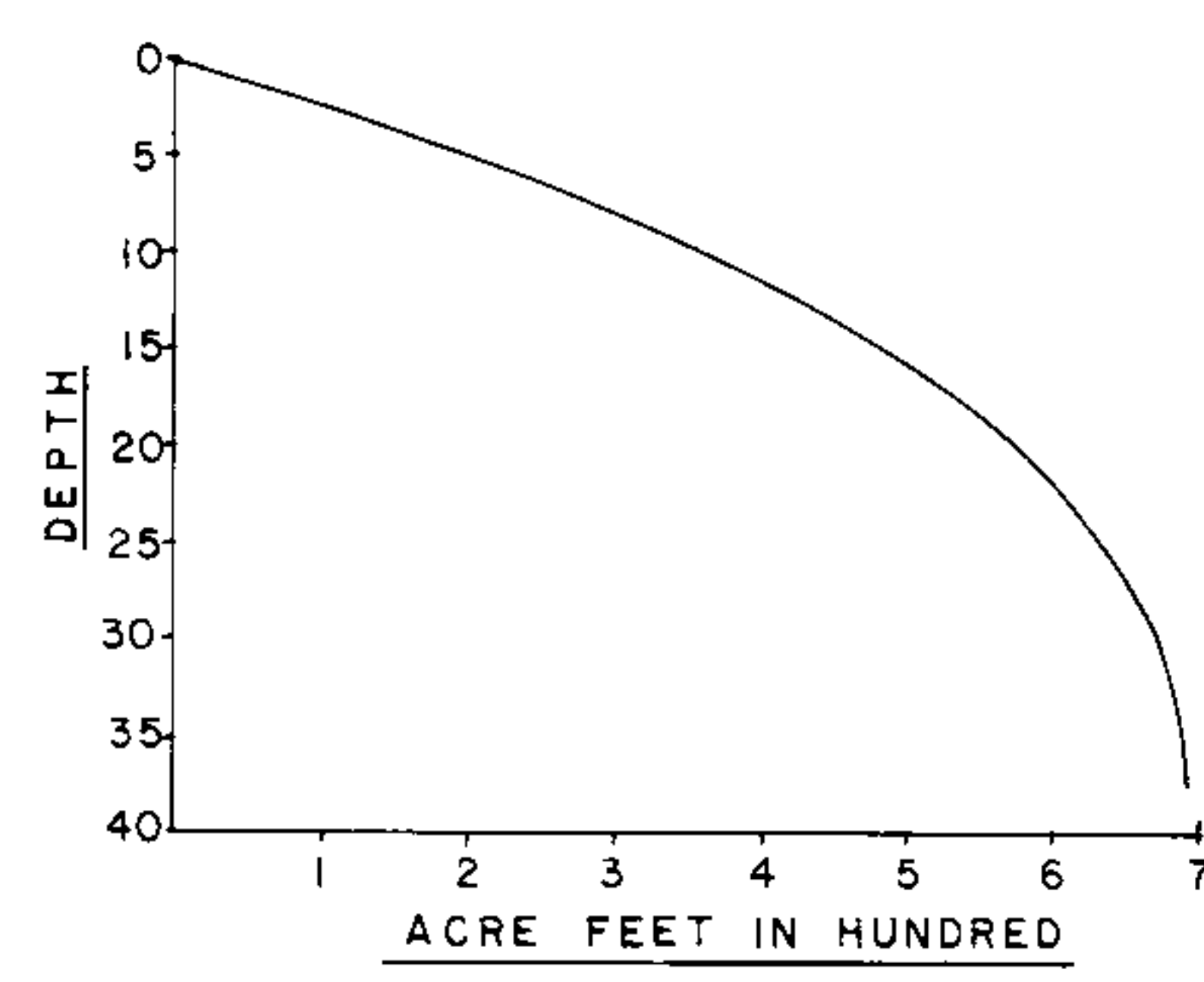
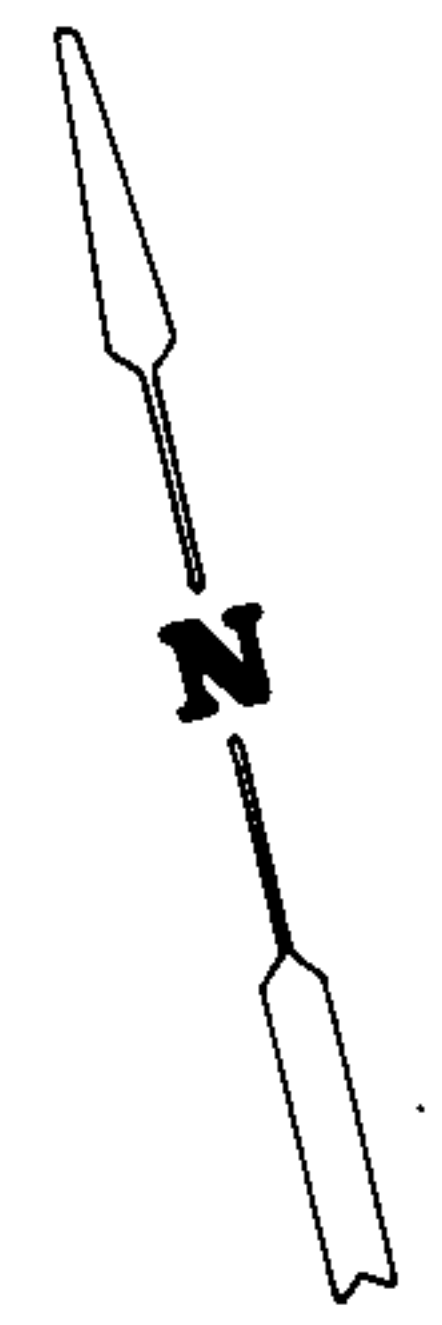


LAKE SURVEY MAP

Leigh Lake Flowage  
231.4 Acres  
52' Max. depth



EQUIPMENT RECORDING SONAR MAPPED JUNE 1974  
MONTH YEAR

- | TOPOGRAPHIC SYMBOLS   |                               | LAKE BOTTOM SYMBOLS |                             |
|-----------------------|-------------------------------|---------------------|-----------------------------|
| (B) Brush             | Steep slope                   | P. Peat             | B Boulders                  |
| (PW) Partially wooded | ----- Indefinite shoreline    | Mk. Muck            | o Stumps & Snags            |
| (W) Wooded            | ----- Marsh                   | C. Clay             | o Rock danger to navigation |
| (C) Cleared           | ----- Spring                  | M. Marl             | T Submergent vegetation     |
| (P) Pastured          | ----- Intermittent stream     | Sd. Sand            | I Emergent vegetation       |
| (A) Agricultural      | ===== Permanent inlet         | St. Silt            | ~ Floating vegetation       |
| B.M. Bench Mark       | ===== Permanent outlet        | Gr. Gravel          | ~ Brush shelters            |
| ■ Dwelling            | ----- Dam                     | R. Rubble           |                             |
| ■ Resort              | ----- D.N.R. State owned land | Bc. Bedrock         |                             |
| ■ Camp                |                               |                     |                             |

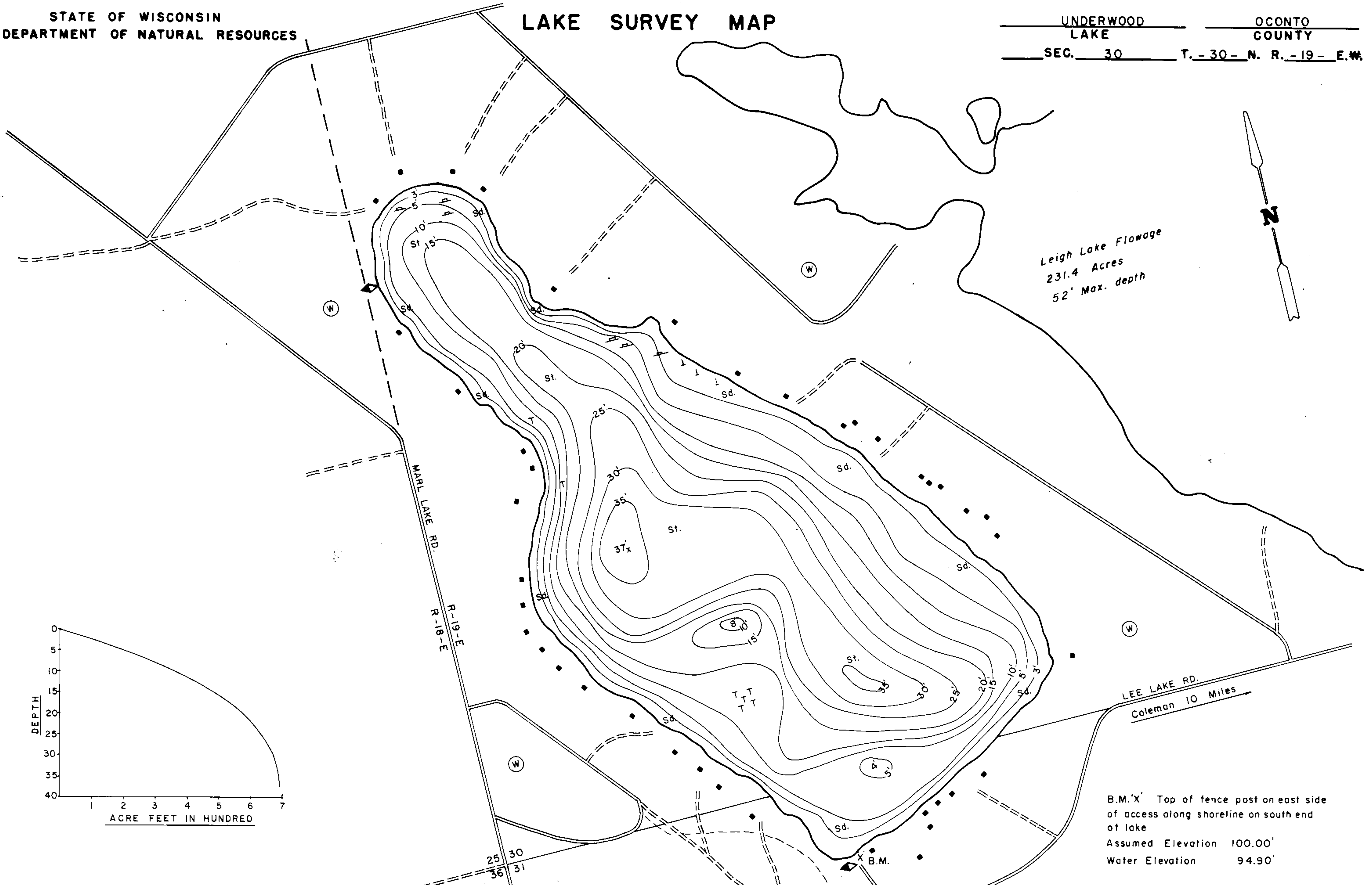


Access Access with Parking Boat Livery  
 Drawn by: E. Eaton  
 Field work by: A. Boese, R. Thrun

SPECIES OF FISH	Abundant	
	Common	Present
Muskie		
N. Pike		X
Walleye		X
L.M. Bass	X	
S.M. Bass	X	
Panfish	X	
Trout		

WATER AREA 44.6 ACRES  
 UNDER 3 FT. 9 %  
 OVER 20 FT. 32 %  
 MAX. DEPTH 37 FEET.  
 TOTAL ALK. 86 P.P.M.  
 VOLUME 692.3 ACRE FT.  
 MAIN SHORELINE 1.25 MI.  
 ISLAND SHORELINE MI.

B.M. 'X' Top of fence post on east side of access along shoreline on south end of lake  
 Assumed Elevation 100.00'  
 Water Elevation 94.90'



Source: Wisconsin Department of Natural Resources 608-266-2621  
Underwood Lake – Oconto County, Wisconsin DNR Lake Map  
Date - Jun 1974 - Historical Lake Map - Not for Navigation  
A Public Document - Please Identify the Source when using it.