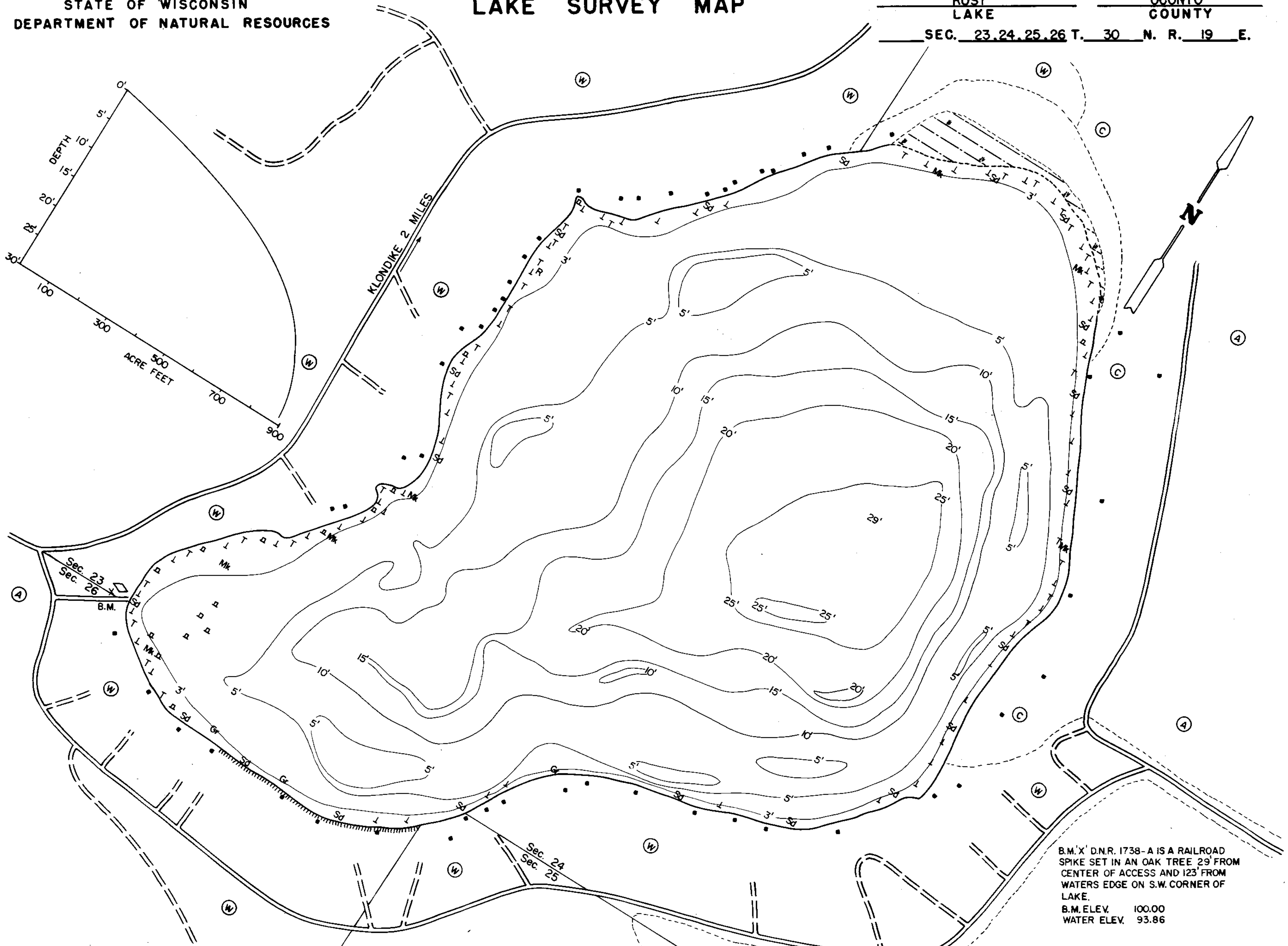


LAKE SURVEY MAP

ROST LAKE
OCONTO COUNTY
SEC. 23, 24, 25, 26 T. 30 N. R. 19 E.



EQUIPMENT RECORDING SONAR MAPPED JULY 1970

- | TOPOGRAPHIC SYMBOLS | | LAKE BOTTOM SYMBOLS | |
|---------------------|---------------------------|---------------------|-----------------------------|
| ⊙ Brush | Steep slope | P. Peat | B Boulders |
| ⊙ Partly wooded | ~ Indefinite shoreline | Mk. Muck | ⊙ Stumps & Snags |
| ⊙ Wooded | ⊙ Marsh | C. Clay | ⊙ Rock danger to navigation |
| ⊙ Cleared | ⊙ Spring | M. Marl | T Submergent vegetation |
| ⊙ Pastured | ~ Intermittent stream | Sd. Sand | ⊙ Emergent vegetation |
| ⊙ Agricultural | ~ Permanent inlet | St. Silt | ⊙ Floating vegetation |
| B.M. Bench Mark | ~ Permanent outlet | Gr. Gravel | ⊙ Brush shelters |
| ⊙ Dwelling | ~ Dam | R. Rubble | |
| ⊙ Resort | ⊙ D.N.R. State owned land | Bc. Bedrock | |
| ⊙ Camp | | | |



◆ Access ◆ Access with Parking ◆ Boat Livery

Drawn by: C. Holt
Field work by: R. Crocker, J. Smith

SPECIES OF FISH	ABUNDANCE	
	Abundant	Common
Muskie		
N. Pike		X
Walleye		X
L.M. Bass	X	
S.M. Bass		
Panfish	X	
Trout		

WATER AREA 90.7 ACRES
 UNDER 3 FT. 8 %
 OVER 20 FT. 16 %
 MAX. DEPTH 29 FEET.
 TOTAL ALK. 79 P.P.M.
 VOLUME 888.3 ACRE FT.
 SHORELINE 1.57 MILES

Source: Wisconsin Department of Natural Resources 608-266-2621
Rost Lake – Oconto County, Wisconsin DNR Lake Map
Date - Jul 1970 - Historical Lake Map - Not for Navigation
A Public Document - Please Identify the Source when using it.