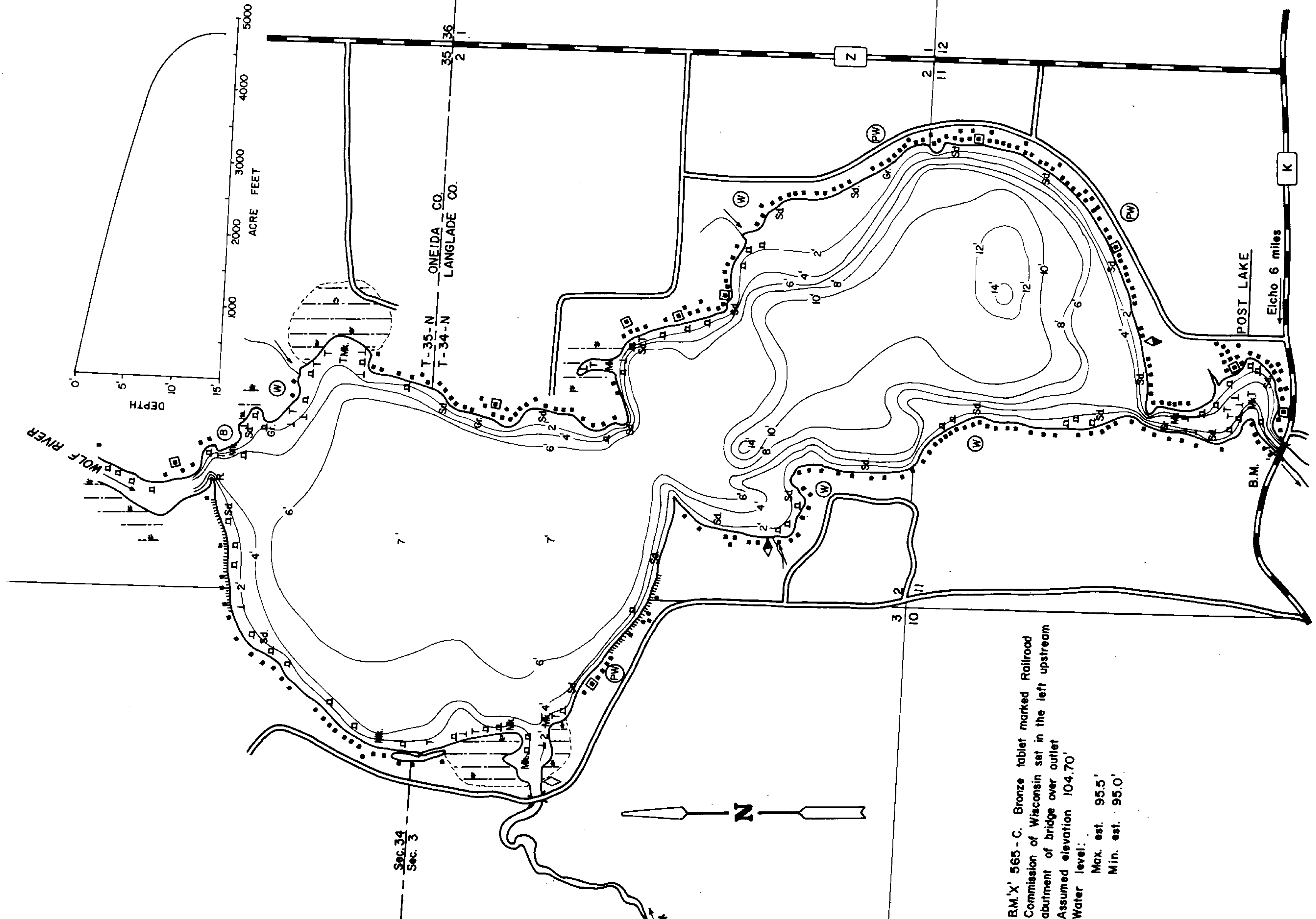


# LAKE SURVEY MAP

UPPER POST LAKE  
LANGLADE-ONEIDA COUNTY  
SEC. 2,3,11,34,35 T.34,35 N. R. 11 E.



B.M.'X' 565 - C. Bronze tablet marked Railroad Commission of Wisconsin set in the left upstream abutment of bridge over outlet  
Assumed elevation 104.70'  
Water level:  
Max. est. 95.5'  
Min. est. 95.0'

- |                            |                          |                       |                            |                 |
|----------------------------|--------------------------|-----------------------|----------------------------|-----------------|
| <b>EQUIPMENT</b>           | <b>SONAR</b>             | <b>UPDATED MAPPED</b> | <b>JULY 1958</b>           | <b>NOV 1967</b> |
| <b>TOPOGRAPHIC SYMBOLS</b> |                          |                       |                            |                 |
| (B) Brush                  | Steep slope              | P. Peat               | <b>LAKE BOTTOM SYMBOLS</b> |                 |
| (PW) Partially wooded      | --- Indefinite shoreline | Mk. Muck              | B Boulders                 |                 |
| (W) Wooded                 | Marsh                    | C. Clay               | Stumps & Snags             |                 |
| (C) Cleared                | Spring                   | M. Marl               | Rock danger to navigation  |                 |
| (P) Pastured               | Intermittent stream      | Sd. Sand              | T Submergent vegetation    |                 |
| (A) Agricultural           | Permanent inlet          | Sl. Silt              | Emergent vegetation        |                 |
| B.M. Bench Mark            | Permanent outlet         | Gr. Gravel            | Floating vegetation        |                 |
| ■ Dwelling                 | Dam                      | R. Rubble             | Brush shelters             |                 |
| ■ Resort                   | D.N.R. State owned land  | Bc. Bedrock           |                            |                 |
| ■ Camp                     |                          |                       |                            |                 |

800' 0' 800' 1600' 2400' 3200'  
**SCALE**  
◆ Access    ◆ Access with Parking    ◆ Boat Livery  
Drawn by: C. Holt  
Field work by: R. Theis

SPECIES OF FISH	Abundance		
	Abundant	Common	Present
Muskie			X
N. Pike	X	X	X
Walleye			X
L. M. Bass	X	X	X
S. M. Bass			X
Panfish	X		
Trout			

WATER AREA 756.7 ACRES  
UNDER 3 FT. 10.5 %  
OVER 20 FT. 0 %  
MAX. DEPTH 14 FEET.  
TOTAL ALK. 48 P.P.M.  
VOLUME 4781.7 ACRE FT.  
SHORELINE 7.6 MILES

Source: Wisconsin Department of Natural Resources 608-266-2621  
Upper Post Lake – Langlade and Oneida Counties, Wisconsin DNR Lake Map  
Date Jul 1967 - Historical Lake Map - Not for Navigation  
A Public Document - Please Identify the Source when using it.