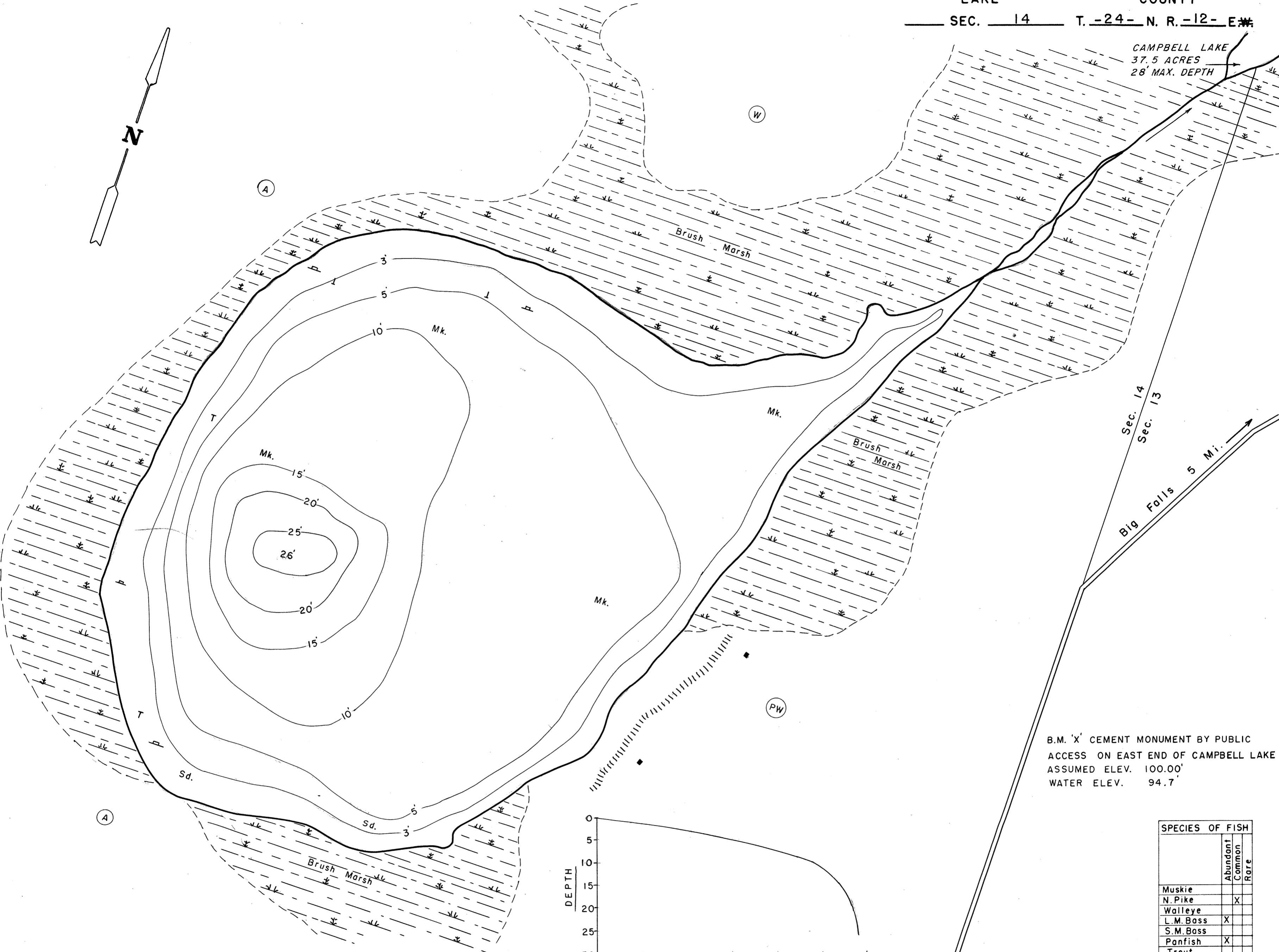
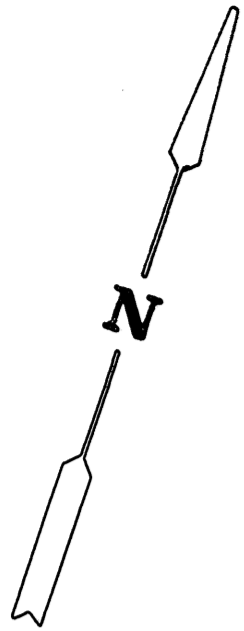
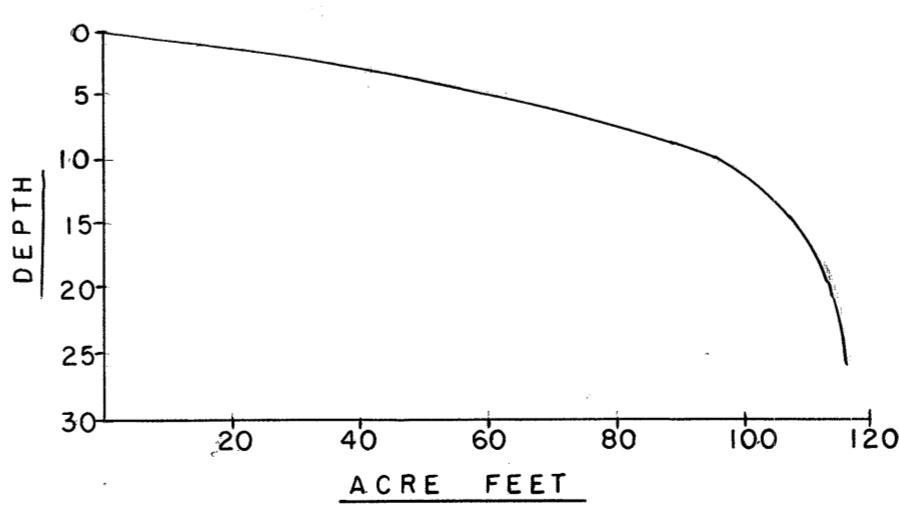


CAMPBELL LAKE
 37.5 ACRES
 28' MAX. DEPTH



B.M. 'X' CEMENT MONUMENT BY PUBLIC ACCESS ON EAST END OF CAMPBELL LAKE ASSUMED ELEV. 100.00' WATER ELEV. 94.7'

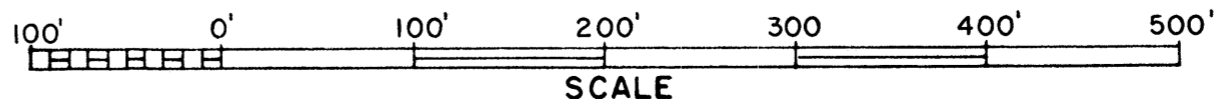


EQUIPMENT SONAR MAPPED MAY 1967
 TOPOGRAPHIC SYMBOLS MO. YR.
 WATER ELEV. 94.7'

- | | | | | |
|-----------------------|----------------------------|---------------------|-------------------------|----------------|
| (B) Brush | Steep slope | LAKE BOTTOM SYMBOLS | Gr. Gravel | Stumps & Snags |
| (PW) Partially wooded | - - - Indefinite shoreline | P. Peat | R. Rubble | |
| (W) Wooded | Marsh | Mk. Muck | Br. Bedrock | |
| (C) Cleared | o Spring | C. Clay | T Submergent vegetation | |
| (P) Pastured | - - - Intermittent stream | M. Marl | ↓ Emergent vegetation | |
| (A) Agricultural | ==== Permanent inlet | Sd. Sand | ▬ Floating vegetation | |
| B.M. Bench Mark | ==== Permanent outlet | St. Silt | | |
| ■ Dwelling | ⊥ Dam | | | |
| □ Resort | | | | |

SPECIES OF FISH		
	Abundant	Rare
Muskie		
N. Pike	X	
Walleye		
L. M. Bass	X	
S. M. Bass		
Panfish	X	
Trout		

AREA 15.3 ACRES
 UNDER 3FT. 20 %
 OVER 20FT. 20 %
 VOLUME 116.8 ACRE FT.
 TOTAL ALK. 115 P.P.M.
 SHORELINE 0.7 MILES
 MAX. DEPTH 26 FEET



◇ Access ◆ Access with Parking ◆ Boat Livery
 Field work by: G. Werdin, L. Rice Drawn by: C. Holt, E. Eaton

Source: Wisconsin Department of Natural Resources 608-266-2621
Price Lake – Waupaca County, Wisconsin DNR Lake Map
Date – May 1967 - Historical Lake Map - Not for Navigation
A Public Document - Please Identify the Source when using it.