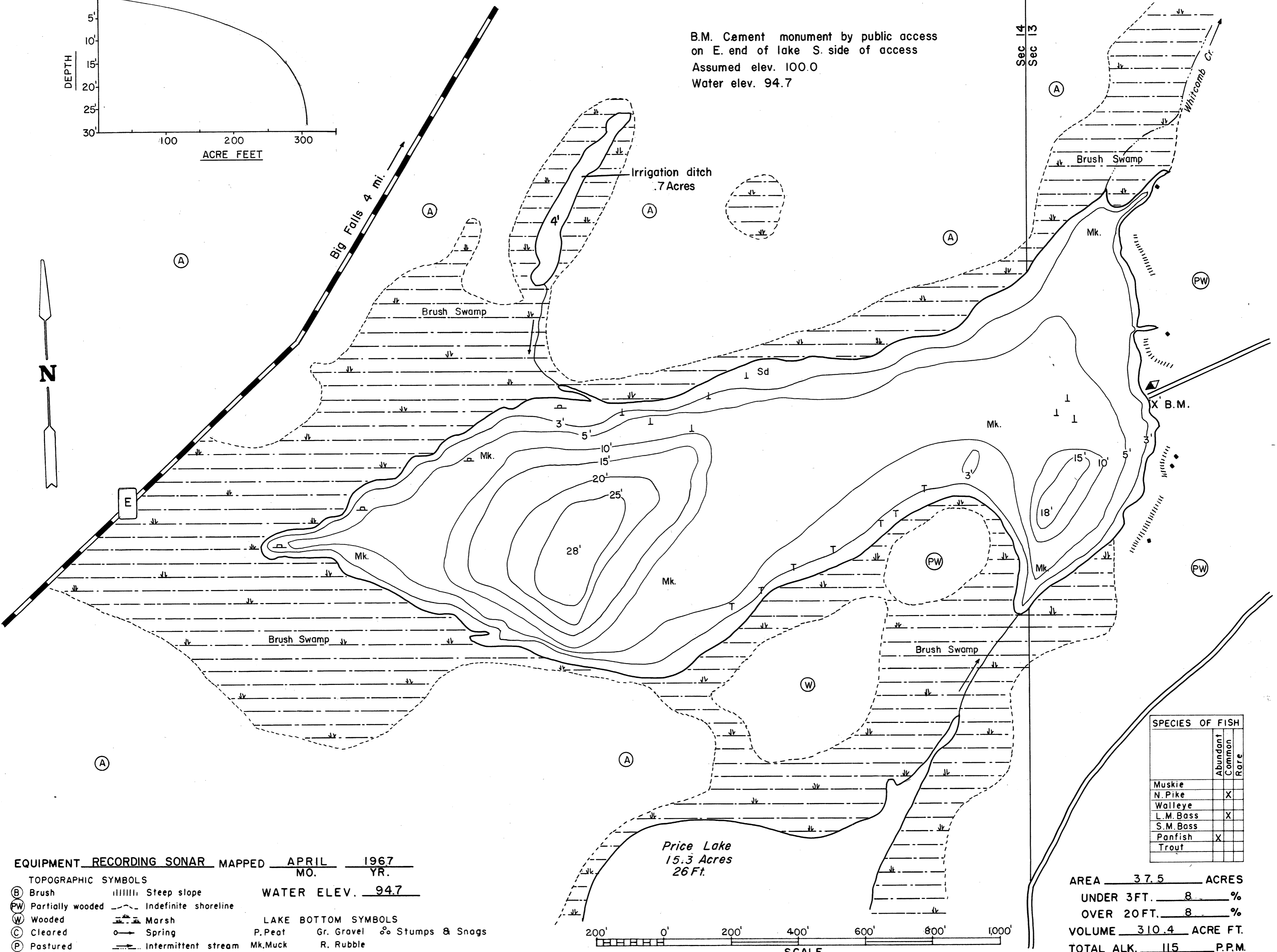


B.M. Cement monument by public access  
on E. end of lake S. side of access  
Assumed elev. 100.0  
Water elev. 94.7

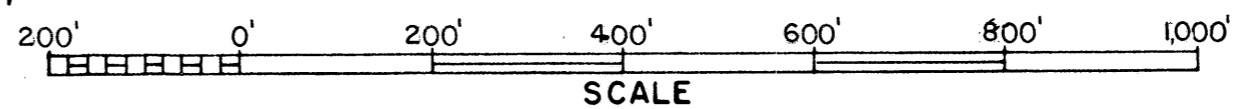


EQUIPMENT RECORDING SONAR MAPPED APRIL 1967  
MO. YR.

- TOPOGRAPHIC SYMBOLS
- (B) Brush
  - (PW) Partially wooded
  - (W) Wooded
  - (C) Cleared
  - (P) Pastured
  - (A) Agricultural
  - B.M. Bench Mark
  - Dwelling
  - Resort
  - ||||| Steep slope
  - - - Indefinite shoreline
  - ||||| Marsh
  - Spring
  - - - Intermittent stream
  - ==== Permanent inlet
  - ==== Permanent outlet
  - ⊥ Dam

WATER ELEV. 94.7

- LAKE BOTTOM SYMBOLS
- P. Peat
  - Mk. Muck
  - C. Clay
  - M. Marl
  - Sd. Sand
  - St. Silt
  - Gr. Gravel
  - R. Rubble
  - Br. Bedrock
  - T Submergent vegetation
  - ⊥ Emergent vegetation
  - ⊥ Floating vegetation
  - ⊙ Stumps & Snags



◇ Access      ◆ Access with Parking      ◆ Boat Livery  
Field work by: G. Werdin, L. Rice      Drawn by: C. Holt

SPECIES OF FISH			
	Abundant	Common	Rare
Muskie			
N. Pike		X	
Walleye			
L. M. Bass		X	
S. M. Bass			
Panfish	X		
Trout			

AREA 37.5 ACRES  
UNDER 3FT. 8 %  
OVER 20FT. 8 %  
VOLUME 310.4 ACRE FT.  
TOTAL ALK. 115 P.P.M.  
SHORELINE 1.5 MILES  
MAX. DEPTH 28 FEET

Source: Wisconsin Department of Natural Resources 608-266-2621  
Campbell Lakes – Waupaca County, Wisconsin DNR Lake Map  
Date – Apr 1967 - Historical Lake Map - Not for Navigation  
A Public Document - Please Identify the Source when using it.