

LEGEND

TOPOGRAPHIC SYMBOLS

- (B) Brush
- (PW) Partially wooded
- (W) Wooded
- (C) Cleared
- (P) Pastured
- (A) Agricultural
- B.M. Bench Mark
- Dwelling
- ▣ Resort
- ||||| Steep slope
- - - Indefinite shoreline
- ||||| Marsh
- Spring
- Intermittent stream
- === Permanent inlet
- === Permanent outlet
- ⊥ Dam

LAKE BOTTOM SYMBOLS

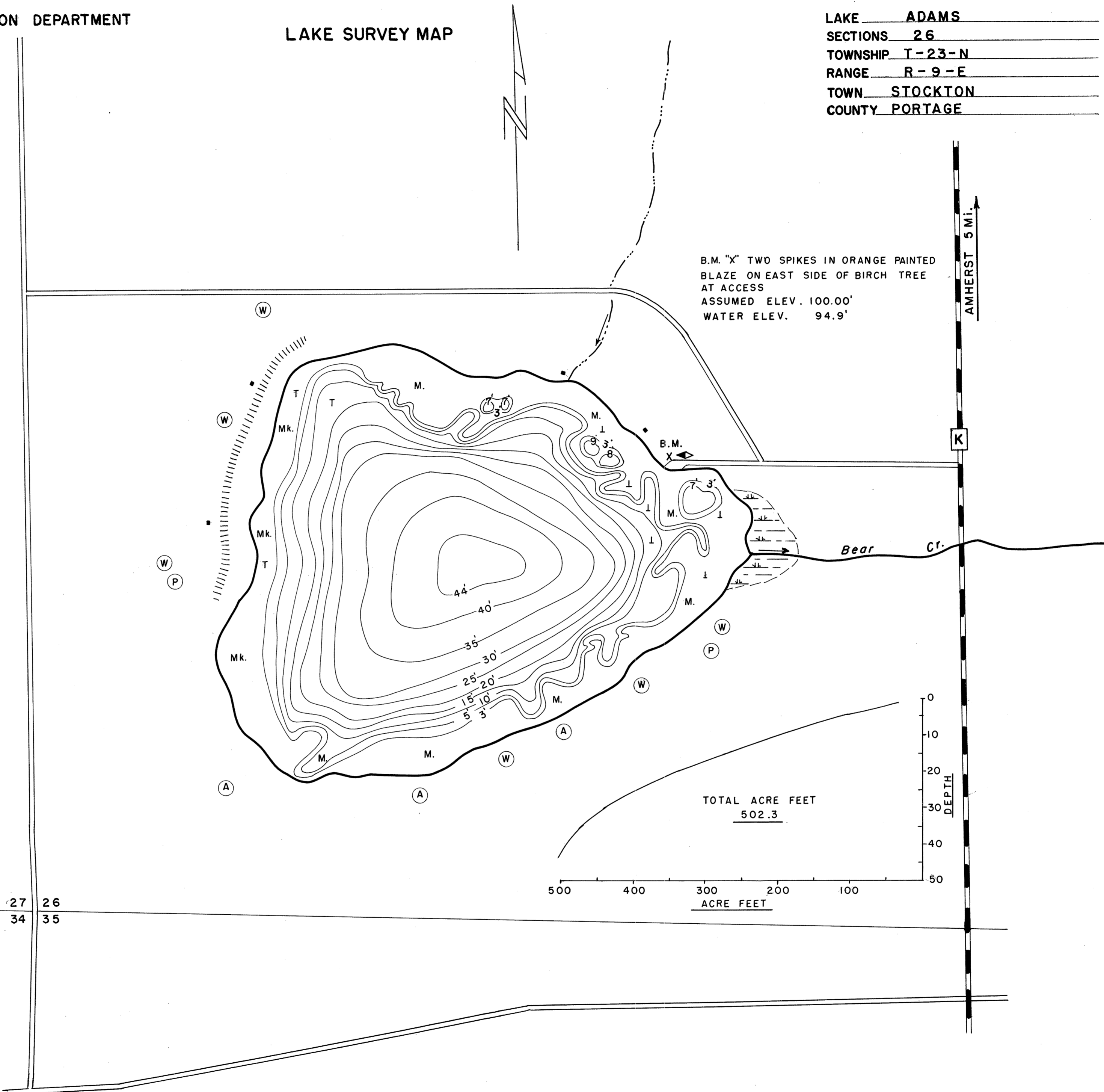
- P. Peat Gr. Gravel
- Mk. Muck R. Rubble
- C. Clay Br. Bedrock
- M. Marl Sd. Sand
- T Submergent vegetation
- ⊥ Emergent vegetation
- ⊥ Floating vegetation

SPECIES OF FISH

	Abundant	Common	Rare
Muskie			
N.Pike			
Walleye			
L.M.Bass	X		
S.M.Bass			
Panfish	X		
Trout	X		

B.M. "X" TWO SPIKES IN ORANGE PAINTED BLAZE ON EAST SIDE OF BIRCH TREE AT ACCESS
 ASSUMED ELEV. 100.00'
 WATER ELEV. 94.9'

AMHERST 5 Mi.

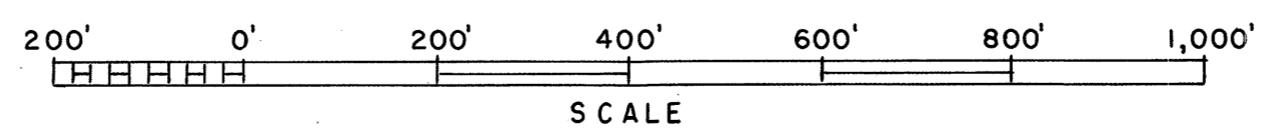


TOTAL ACRE FEET
502.3

500 400 300 200 100
 ACRE FEET

DEPTH
 0
 10
 20
 30
 40
 50

27 26
 34 35



◇ ACCESS ◇ ACCESS WITH PARKING ◇ BOAT LIVERY

Field work by: H.Schmude
 Drawn by: E.Eaton
 LAKE MAPPED JULY 1963
 SOURCE OF INFORMATION W.C.D.
 SOUNDINGS SONAR
 TOTAL ALK. 220 P.P.M.

AREA 28.4 ACRES
 TOTAL SHORELINE .81 MILES
 MAX. DEPTH 44 FEET
 UNDER 3' 31% OVER 20' 42%

Source: Wisconsin Department of Natural Resources 608-266-2621
Adams Lake – Portage County, Wisconsin DNR Lake Map
Date – Jul 1963 - Historical Lake Map - Not for Navigation
A Public Document - Please Identify the Source when using it.