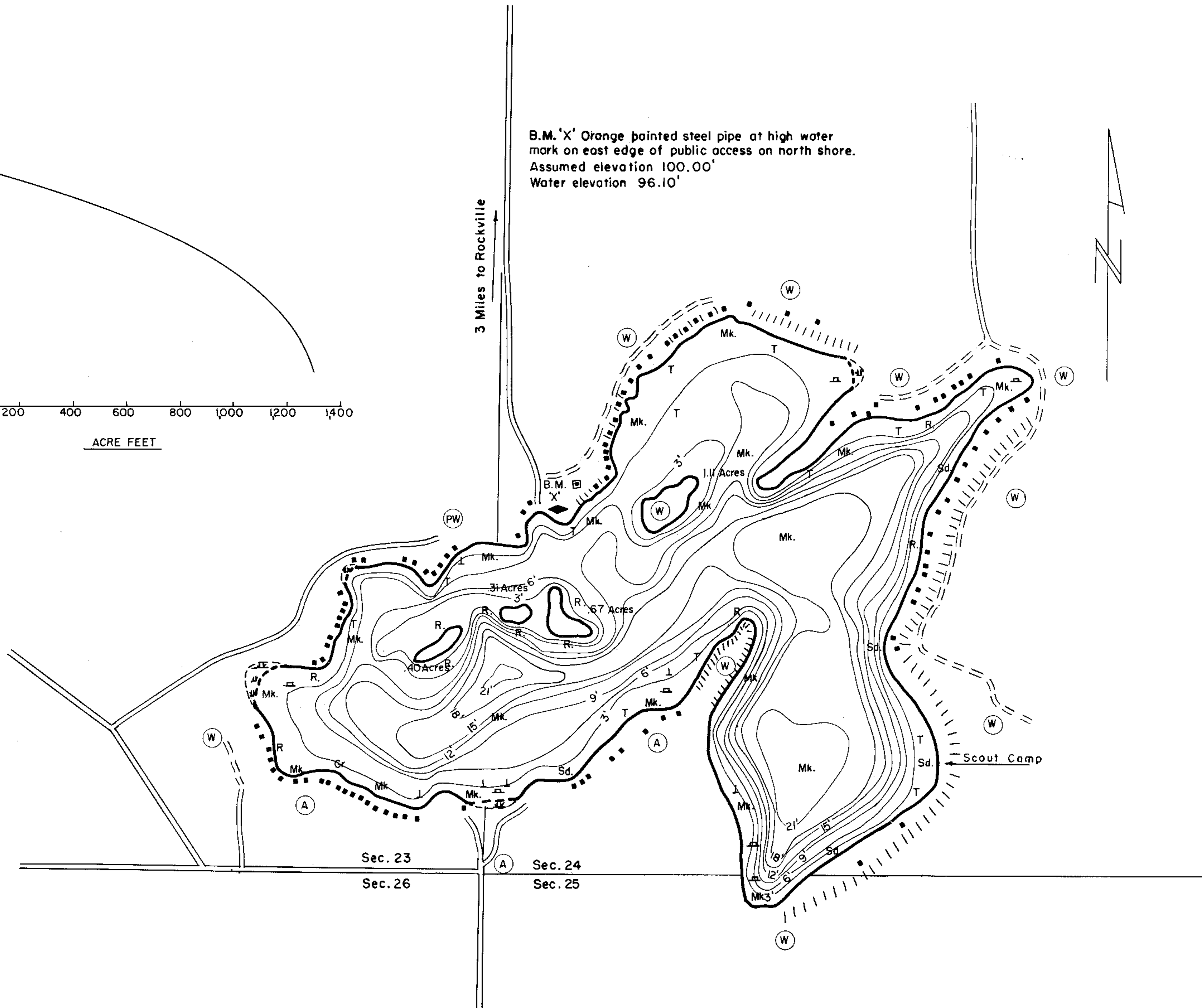


B.M. 'X' Orange pointed steel pipe at high water mark on east edge of public access on north shore. Assumed elevation 100.00' Water elevation 96.10'

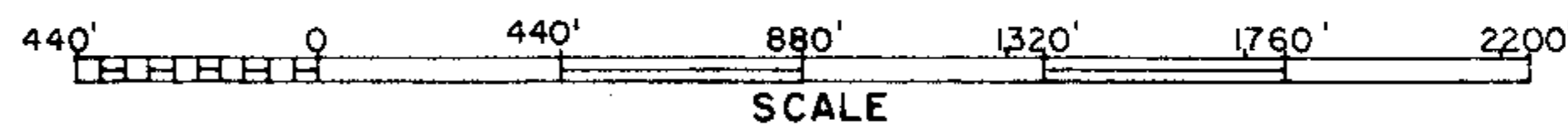


EQUIPMENT RECORDING SONAR MAPPED AUG. 1965  
 MO. YR.

- TOPOGRAPHIC SYMBOLS
- (B) Brush
  - (PW) Partially wooded
  - (W) Wooded
  - (C) Cleared
  - (P) Pastured
  - (A) Agricultural
  - B.M. Bench Mark
  - Dwelling
  - Resort

- LAKE BOTTOM SYMBOLS
- Gr. Gravel
  - R. Rubble
  - C. Clay
  - M. Marl
  - Sd. Sand
  - St. Silt
  - Steep slope
  - Indefinite shoreline
  - Marsh
  - Spring
  - Intermittent stream
  - Permanent inlet
  - Permanent outlet
  - Dam
  - Stumps & Snags
  - Emergent vegetation
  - Floating vegetation

WATER ELEV. 96.10'



Access Access with Parking Boat Livery  
 Field work by: H. Schmude, T. Corbett Drawn by: J. Roth

| SPECIES OF FISH |          |      |
|-----------------|----------|------|
|                 | Abundant | Rare |
| Muskie          |          |      |
| N. Pike         | X        |      |
| Walleye         |          |      |
| L. M. Bass      | X        |      |
| S. M. Bass      |          |      |
| Panfish         | X        |      |
| Trout           |          |      |

144.3 WITH ISLANDS  
 AREA 141.81 ACRES  
 UNDER 3FT. 24.2 %  
 OVER 20FT. 7.6 %  
 VOLUME 1302.39 ACRE FT.  
 TOTAL ALK. 116 P.P.M.  
 SHORELINE 3.57 MILES  
 MAX. DEPTH 21 FEET

Source: Wisconsin Department of Natural Resources 608-266-2621  
Cedar Lake – Manitowoc County, Wisconsin DNR Lake Map  
Date – Aug 1965 - Historical Lake Map - Not for Navigation  
A Public Document - Please Identify the Source when using it.