

JANUARY 21, 1993

Jenelle Reick and Sandra Taubner visited the Scot corporation on January 21, 1993, to assess the progress of the soil boring performed by Layne-Northwest. Upon our arrival, at approximately 11:00 am, we learned that a boring had been made on the 20th, (labelled 1-20), which had gone to 13.5 feet before reaching bedrock, but had not reached the water table at that point.

This morning, a second boring(1-21A) had been attempted inside the factory, but was unsuccessful due to an undetermined rock or concrete obstruction located at 3.5 feet. Though the size of this boring was less than desirable, an HNU reading was taken. No detect was found.

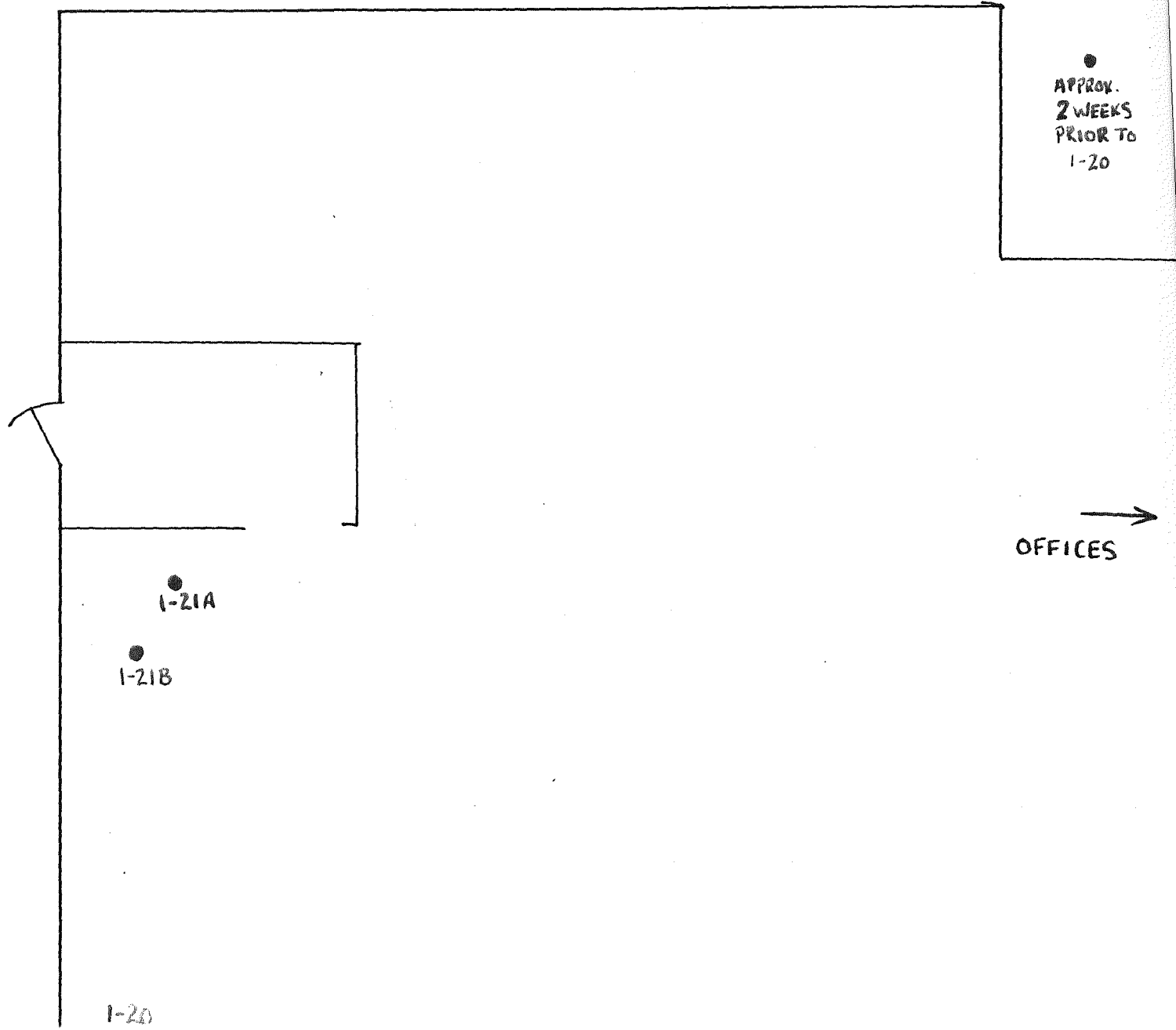
The operations for the second boring of the 21st(1-21B) began at 12:05 pm. The following table outlines the progression of this hole:

<u>DEPTH</u>	<u>DESCRIPTION</u>	<u>DETECT LEVEL</u>
1-3ft.	Dry Soil	.5ppm - 1ppm
3-5ft.	Soil with Slight Discoloration in Sand Lens - Greenish-Black Color	.2ppm - .3ppm
5-7ft.	Soil Getting Rocky, No Recovery Reading Taken From Drill Cuttings	.2ppm - .4ppm
7-9ft.	Rocky, Probably Weathered Bedrock-Slightly Discolored- Wet	6ppm
9-11.6ft.	Bedrock at 11.6 Feet, Water Level at 9 - 9.5 Feet	ND

Samples were collected by Laura Petersen of Layne-Northwest at each of these depths, with the exception of the 5-7 foot range. No slant drilling was planned, as the drillers were able to bore directly over the one-time location of the degreaser, by drilling inside of the factory.

4N

1 GEORGETOWN WELLS



APPROX.
2 WEEKS
PRIOR TO
1-20

OFFICES

1-21A

1-21B

1-20

NOT TO SCALE 1-21-01