

## Pfeiffer, Jane K - DNR

---

**From:** Robert Reineke <rreineke@ksinghengineering.com>  
**Sent:** Monday, June 6, 2022 12:47 PM  
**To:** Pfeiffer, Jane K - DNR; shane@roerscompanies.com  
**Cc:** que@scott-crawford.com; Pratap Singh; Daniel Pelczar  
**Subject:** RE: Community Within the Corridor - West Block (02-41-587376) - Commissioning Plan Approval Letter  
**Attachments:** Location and Reading Figure.pdf  
**Follow Up Flag:** Follow up  
**Flag Status:** Completed

**CAUTION: This email originated from outside the organization.  
Do not click links or open attachments unless you recognize the sender and know the content is safe.**

Jane,

We commenced with commissioning on June 1, 2022 at the CWC West Block. Vacuum readings were performed and passive samplers were set in accordance with the approved maintenance plan.

For information purposes, we're providing you with vacuum measurements performed on June 1, 2022 as part of initial commissioning. Please see the attached figure of locations and vacuum readings. As you can see on the figure, we exceeded the 0.004 inches of H2O vacuum goal throughout buildings 7, 8A, and 8B. Maximum reading was 0.680 inches of H2O in SVP-8 and minimum reading was 0.008 inches of H2O in SVP-16.

We will be collecting the passive samplers after 1 week on Wednesday and turning them in for analysis. A commissioning report will be submitted upon receipt of the laboratory results.

**Robert T. Reineke, P.E.**

Principal Engineer | [rreineke@ksinghengineering.com](mailto:rreineke@ksinghengineering.com)  
262. 821.1171 ext. 111 (p) | 262.424.5191 (cell)  
[www.ksinghengineering.com](http://www.ksinghengineering.com)

**KSingh** | Engineers  
Scientists  
Consultants



---

**From:** Pfeiffer, Jane K - DNR <jane.pfeiffer@wisconsin.gov>  
**Sent:** Monday, May 23, 2022 3:49 PM  
**To:** shane@roerscompanies.com  
**Cc:** que@scott-crawford.com; Robert Reineke <rreineke@ksinghengineering.com>; Pratap Singh <psingh@ksinghengineering.com>; Daniel Pelczar <dpelczar@ksinghengineering.com>  
**Subject:** Community Within the Corridor - West Block (02-41-587376) - Commissioning Plan Approval Letter

Greetings,

Attached is the commissioning plan approval letter for the above-referenced site.

Thank you,

Jane

**We are committed to service excellence.**

Visit our survey at <http://dnr.wi.gov/customersurvey> to evaluate how I did.

**Jane K. Pfeiffer**

Hydrogeologist - Remediation & Redevelopment Program

Wisconsin Department of Natural Resources

Phone: (414) 435-8021

[jane.pfeiffer@wisconsin.gov](mailto:jane.pfeiffer@wisconsin.gov)



---

Total Control Panel

[Login](#)

To: [rreineke@ksinghengineering.com](mailto:rreineke@ksinghengineering.com)

Message Score: 1

High (60): **Pass**

From:

My Spam Blocking Level: Low

Medium (75): **Pass**

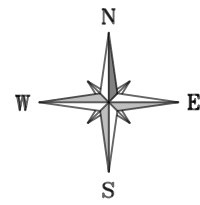
[prvs=1350e8b77=jane.pfeiffer@wisconsin.gov](mailto:prvs=1350e8b77=jane.pfeiffer@wisconsin.gov)

Low (90): **Pass**

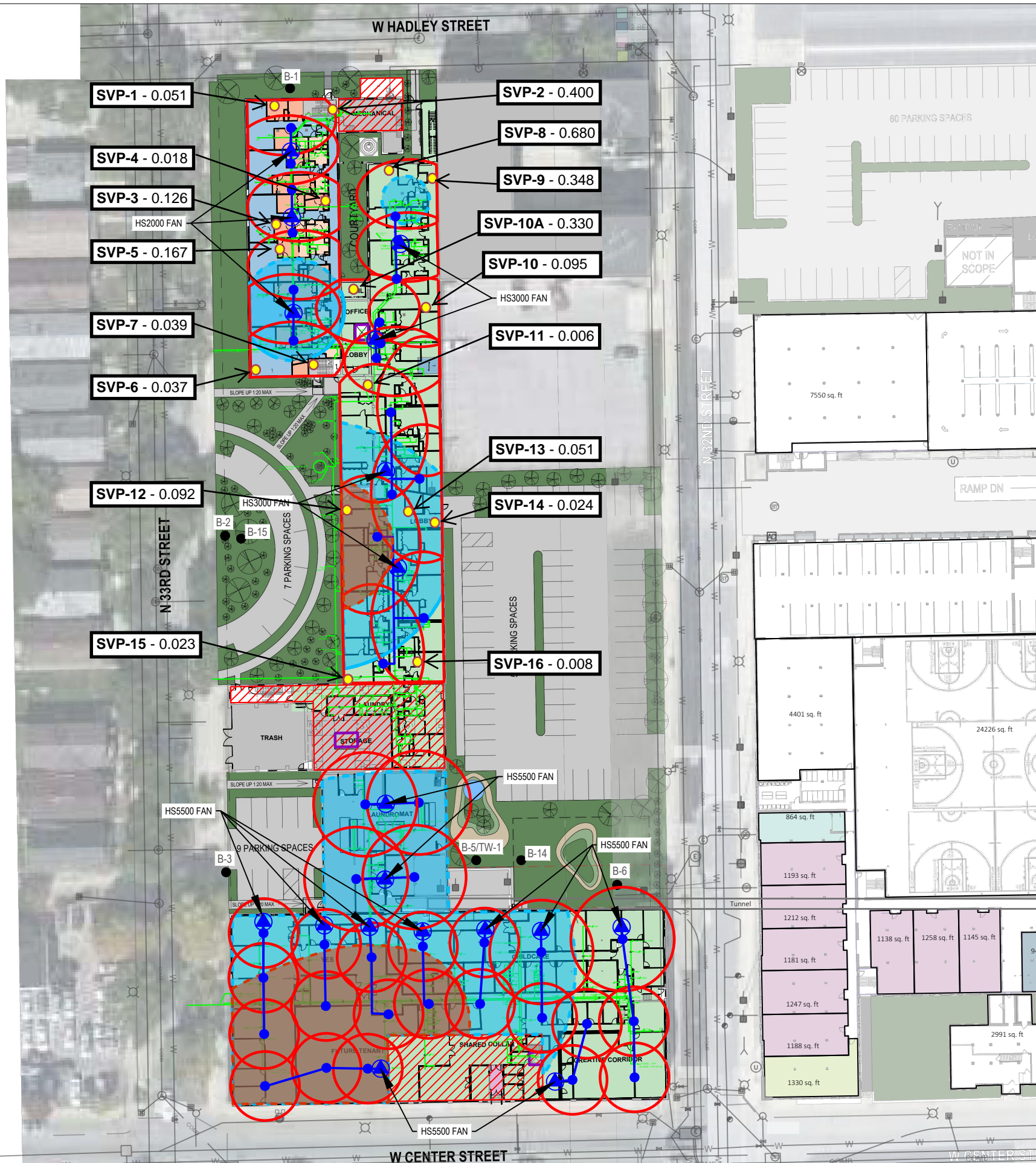
[Block](#) this sender

[Block](#) wisconsin.gov

*This message was delivered because the content filter score did not exceed your filter level.*



SCALE IN FEET  
0 50'

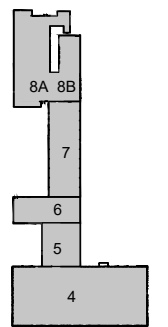


**LEGEND**

- Previous Boring and Temporary Well Locations
- Known Elevator Shaft
- Planned Underground Plumbing
- ▭ Underground Tunnel
- ▨ Basement Area(s)
- Extraction Point Location
- 3" sch. 40 PVC pipe (may be modified)
- Exterior Fan Location
- Zone of Influence
- Approximate WI Residential VRSL Exceedance Extents
- Approximate WI Small Commercial VRSL Exceedance Extents
- Sub-slab Vapor Pin (SVP-xx)

**NOTES:**

1. MINIMUM OF 3.5" SLAB PENETRATION
2. 10-15 "GALL" SOIL REMOVED BENEATH SLAB TO ACT AS SUCTION PIT
3. SEE TABLE FOR RADII FOOTAGE
4. 3" SCH. 40 PVC
5. BALL VALVES FOR EACH EXTRACTION POINT TO REGULATE FLOW
6. MANOMETER AND VELOCITY PORTS FOR EACH EXTRACTION POINT TO MEASURE FLOW AND NEGATIVE PRESSURE
7. MANOMETER POINT AT EACH FAN INLET FOR NEGATIVE PRESSURE
8. EXHAUST VENTING 2 FT ABOVE ROOF AND/OR 12 FT FROM WINDOWS
9. MIN 1.5% SLOPE TOWARD EXTRACTION POINTS
10. ELECTRICAL DISCONNECT AND OWN CIRCUIT FOR EACH FAN
11. 2" EXHAUST PIPING FOR HS FANS, 3" FOR GP501C
12. SEAL ALL CRACKS IN FLOORS
13. PLANS UNDERWAY TO REVISE WD-SV TO SC-1 UNDERLAIN BY 50-MIL SUB-MEMBRANE.



**KEY PLAN**

PROJECT TITLE: SITE INVESTIGATION REPORT  
3212 W. CENTER ST., 2727 N. 32ND ST., 2758 N. 33RD ST.  
COMMUNITY WITHIN THE CORRIDOR - WEST BLOCK  
MILWAUKEE, WI 53210  
PROJECT NUMBER: 40443

CLIENT:  
COMMUNITY WITHIN THE CORRIDOR LIMITED  
PARTNERSHIP

REVISIONS	DATE	DESCRIPTION

DRAWN BY	DATE
JPB	06/02/2022
CHECKED BY	DATE
RTR	06/02/2022

SHEET TITLE  
Sub-slab Depressurization  
Location and Results

**FIGURE 1**