

**LEGEND**

- Previous Boring and Temporary Well Locations
- Known Elevator Shaft
- Planned Underground Plumbing
- ▭ Underground Tunnel
- ▨ Basement Area(s)
- Extraction Point Location
- 3" sch. 40 PVC pipe (may be modified)
- Exterior Fan Location
- Zone of Influence
- Approximate WI Residential VRSL Exceedance Extents
- Approximate WI Small Commercial VRSL Exceedance Extents
- Sub-slab Vapor Pin (SVP-xx)
- Proposed 2nd Round of Subslab Vacuum Measurements

EP-2  
Replaced with  
HS5000 Fan

60 PARKING SPACES

7550 sq. ft.

RAMP DN

4401 sq. ft.

24226 sq. ft.

864 sq. ft.

1193 sq. ft.

1212 sq. ft.

1181 sq. ft.

1247 sq. ft.

1188 sq. ft.

1330 sq. ft.

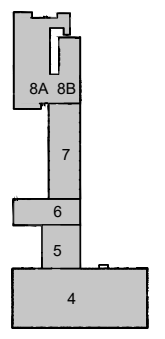
1138 sq. ft.

1258 sq. ft.

1145 sq. ft.

**NOTES:**

1. MINIMUM OF 3.5" SLAB PENETRATION
2. 10-15 "GALL" SOIL REMOVED BENEATH SLAB TO ACT AS SUCTION PIT
3. SEE TABLE FOR RADII FOOTAGE
4. 3" SCH. 40 PVC
5. BALL VALVES FOR EACH EXTRACTION POINT TO REGULATE FLOW
6. MANOMETER AND VELOCITY PORTS FOR EACH EXTRACTION POINT TO MEASURE FLOW AND NEGATIVE PRESSURE
7. MANOMETER POINT AT EACH FAN INLET FOR NEGATIVE PRESSURE
8. EXHAUST VENTING 2 FT ABOVE ROOF AND/OR 12 FT FROM WINDOWS
9. MIN 1.5% SLOPE TOWARD EXTRACTION POINTS
10. ELECTRICAL DISCONNECT AND OWN CIRCUIT FOR EACH FAN
11. 2" EXHAUST PIPING FOR HS FANS, 3" FOR GP501C
12. SEAL ALL CRACKS IN FLOORS
13. PLANS UNDERWAY TO REVISE WD-SV TO SC-1 UNDERLAIN BY 50-MIL SUB-MEMBRANE.



**KEY PLAN**

PROJECT TITLE: SITE INVESTIGATION REPORT  
3212 W. CENTER ST., 2727 N. 32ND ST., 2758 N. 33RD ST.  
COMMUNITY WITHIN THE CORRIDOR - WEST BLOCK  
MILWAUKEE, WI 53210  
PROJECT NUMBER: 40443

CLIENT:  
COMMUNITY WITHIN THE CORRIDOR LIMITED  
PARTNERSHIP

REVISIONS	DATE	DESCRIPTION

DRAWN BY: JPB DATE: 06/02/2022  
CHECKED BY: RTR DATE: 06/02/2022

SHEET TITLE  
Sub-slab Depressurization  
Location and Results

**FIGURE 1**

## Pfeiffer, Jane K - DNR

---

**From:** Pfeiffer, Jane K - DNR  
**Sent:** Monday, September 12, 2022 1:01 PM  
**To:** Robert Reineke  
**Cc:** Pratap Singh  
**Subject:** RE: CWC- West Block (02-41-587376) VMS Commissioning Info Request

Hi Robert—Thank you for the information. As we previously discussed during our phone call on 08/30, if the RP would like a formal DNR review and response to the revised PFE measurement locations for the second round of VMS commissioning, please present a technical assistance fee and associated documentation.

Best, Jane

**We are committed to service excellence.**

Visit our survey at <http://dnr.wi.gov/customersurvey> to evaluate how I did.

**Jane Pfeiffer**

Phone: (414) 435-8021

[jane.pfeiffer@wisconsin.gov](mailto:jane.pfeiffer@wisconsin.gov)

---

**From:** Robert Reineke <[rreineke@ksinghengineering.com](mailto:rreineke@ksinghengineering.com)>  
**Sent:** Thursday, September 8, 2022 11:23 AM  
**To:** Pfeiffer, Jane K - DNR <[jane.pfeiffer@wisconsin.gov](mailto:jane.pfeiffer@wisconsin.gov)>  
**Cc:** Pratap Singh <[psingh@ksinghengineering.com](mailto:psingh@ksinghengineering.com)>  
**Subject:** RE: CWC- West Block (02-41-587376) VMS Commissioning Info Request

**CAUTION: This email originated from outside the organization.  
Do not click links or open attachments unless you recognize the sender and know the content is safe.**

Jane,

Please find attached an amended plan which has the same number of subslab vapor measurement points.

**Robert Reineke, PE**

Principal Engineer | [rreineke@ksinghengineering.com](mailto:rreineke@ksinghengineering.com)

262.821.1171, ext. 111 (p) | 262.424.5191 (cell)

[www.ksinghengineering.com](http://www.ksinghengineering.com)

**KSingh** | Engineers  
Scientists  
Consultants



---

**From:** Pfeiffer, Jane K - DNR <[jane.pfeiffer@wisconsin.gov](mailto:jane.pfeiffer@wisconsin.gov)>  
**Sent:** Thursday, August 4, 2022 9:34 AM  
**To:** Robert Reineke <[rreineke@ksinghengineering.com](mailto:rreineke@ksinghengineering.com)>  
**Cc:** Pratap Singh <[psingh@ksinghengineering.com](mailto:psingh@ksinghengineering.com)>  
**Subject:** RE: CWC- West Block (02-41-587376) VMS Commissioning Info Request

Good Morning Robert,

Thank you for email. Please continue to keep me updated.

Best, Jane

**We are committed to service excellence.**

Visit our survey at <http://dnr.wi.gov/customersurvey> to evaluate how I did.

Jane Pfeiffer

Phone: (414) 435-8021

[jane.pfeiffer@wisconsin.gov](mailto:jane.pfeiffer@wisconsin.gov)

---

**From:** Robert Reineke <[rreineke@ksinghengineering.com](mailto:rreineke@ksinghengineering.com)>  
**Sent:** Wednesday, August 3, 2022 4:06 PM  
**To:** Pfeiffer, Jane K - DNR <[jane.pfeiffer@wisconsin.gov](mailto:jane.pfeiffer@wisconsin.gov)>  
**Cc:** Pratap Singh <[psingh@ksinghengineering.com](mailto:psingh@ksinghengineering.com)>  
**Subject:** RE: CWC- West Block (02-41-587376) VMS Commissioning Info Request

**CAUTION: This email originated from outside the organization.  
Do not click links or open attachments unless you recognize the sender and know the content is safe.**

Jane,

Please find attached additional air sampling results for the anomalous PCE reading at location IA-8A-01B which was performed on July 27, 2022. Additional sampling was performed at location IA-8A-01B and the apartments on the either side of the PCE reading.

No VALs were exceeded for PCE this time around. PCE in indoor air was detected ranging from 0.54 ug/m<sup>3</sup> to 0.68 ug/m<sup>3</sup>, well below the VAL of 42 ug/m<sup>3</sup>. TCE was not detected in any of the three samples.

A second round of commissioning is scheduled for later in August. We will be preparing a report summarizing this round of indoor air sampling and the commissioning testing when we receive the results.

Please let me know if you have any questions. Thanks.

**Robert T. Reineke, P.E.**

Principal Engineer | [rreineke@ksinghengineering.com](mailto:rreineke@ksinghengineering.com)

262. 821.1171 ext. 111 (p) | 262.424.5191 (cell)

[www.ksinghengineering.com](http://www.ksinghengineering.com)

---

**From:** Pfeiffer, Jane K - DNR <[jane.pfeiffer@wisconsin.gov](mailto:jane.pfeiffer@wisconsin.gov)>  
**Sent:** Monday, July 11, 2022 1:11 PM  
**To:** Robert Reineke <[rreineke@ksinghengineering.com](mailto:rreineke@ksinghengineering.com)>  
**Subject:** RE: CWC- West Block (02-41-587376) VMS Commissioning Info Request

I think I found a map showing the fan locations – Please confirm that the “exterior fan locations” shown on the attached figure are correct and that these are the locations where the exhaust samples were collected.

**We are committed to service excellence.**

Visit our survey at <http://dnr.wi.gov/customersurvey> to evaluate how I did.

Jane Pfeiffer

Phone: (414) 435-8021

[jane.pfeiffer@wisconsin.gov](mailto:jane.pfeiffer@wisconsin.gov)

---

**From:** Pfeiffer, Jane K - DNR  
**Sent:** Monday, July 11, 2022 11:54 AM  
**To:** Robert Reineke <[rreineke@ksinghengineering.com](mailto:rreineke@ksinghengineering.com)>  
**Subject:** CWC- West Block (02-41-587376) VMS Commissioning Info Request

Hi Robert,

Can you please provide me with an update on the first round of commissioning for Buildings 4 and 5 for the above-referenced site? Has the commissioning occurred yet and, if so, when will the results be submitted to the DNR? Additionally, please present a figure that displays the locations of all of the fans (i.e., the exhaust sample locations) on the rooftops of Buildings 6, 7, 8A, and 8B.

Thank you, Jane

**We are committed to service excellence.**

Visit our survey at <http://dnr.wi.gov/customersurvey> to evaluate how I did.

Jane K. Pfeiffer

Hydrogeologist - Remediation & Redevelopment Program

Wisconsin Department of Natural Resources

Phone: (414) 435-8021

[jane.pfeiffer@wisconsin.gov](mailto:jane.pfeiffer@wisconsin.gov)





---

Total Control Panel

[Login](#)

To: [rreineke@ksinghengineering.com](mailto:rreineke@ksinghengineering.com)

Message Score: 1

High (60): **Pass**

From:

My Spam Blocking Level: Low

Medium (75): **Pass**

[prvs=184b29fd8=jane.pfeiffer@wisconsin.gov](mailto:prvs=184b29fd8=jane.pfeiffer@wisconsin.gov)

Low (90): **Pass**

[Block](#) this sender

[Block](#) wisconsin.gov

*This message was delivered because the content filter score did not exceed your filter level.*

---

Total Control Panel

[Login](#)

To: [rreineke@ksinghengineering.com](mailto:rreineke@ksinghengineering.com)

Message Score: 1

High (60): **Pass**

From:

My Spam Blocking Level: Low

Medium (75): **Pass**

[prvs=2080167f3=jane.pfeiffer@wisconsin.gov](mailto:prvs=2080167f3=jane.pfeiffer@wisconsin.gov)

Low (90): **Pass**

[Block](#) this sender

[Block](#) wisconsin.gov

*This message was delivered because the content filter score did not exceed your filter level.*