

FIREADE FIRE FIGHTING AGENT

Preparation Date: 4/15/19

1. PRODUCT AND COMPANY IDENTIFICATION

Product Name: FireAde Fire Fighting Agent
Recommended use: Fire Fighting
Manufacturer, supplier: Fire Service Plus, Inc.
 180 Etowah Trace
 Fayette, GA 30214
Emergency Contact Telephone number: 770-460-7793

LEGEND HMIS/NFPA	
Severe	4
Serious	3
Moderate	2
Slight	1
Minimal	0

Health	1
Flammability	0
Physical Hazard	0



2. HAZARDS IDENTIFICATION

GHS Classification

Serious Eye Irritant Category 2A
 Skin irritation Category 2

GHS Label Element



Hazard Pictograms:

Signal Word Warning

Hazard Statements

Harmful if swallowed
 Harmful in contact with skin.
 Causes severe eye damage.

Precautionary Statements:

Prevention: Wash skin thoroughly after handling. Do not eat, drink, or smoke when using this product. Wear protective gloves and eye protection.

Response:

Principal routes of exposure: Eye contact, Skin contact, Inhalation, Ingestion.

Skin: Wash contaminated area with soap or mild detergent. Remove contaminated clothing and shoes. Wash clothing before reuse. Get medical attention if irritation persists.

Eyes: Check for and remove contact lens. Immediately flush with plenty of water for at least 15 minutes. Get medical attention immediately.

Inhalation: If symptoms occur move affected person to fresh air. If not breathing, give artificial respiration. If symptoms persist, get medical attention promptly.

Ingestion: If product is swallowed, do not induce vomiting. If vomiting occurs keep head lower than hips to help prevent aspiration. Never give anything by mouth to an unconscious person. If affected person is conscious, give plenty of water to drink. Get medical attention at once.

3. COMPOSITION/INFORMATION ON INGREDIENTS

CAS No	%[weight]	Name
107-41-5	<8	2-methyl-2,4-pentanediol
142-31-4	<8	sodium octyl sulfate
Not Available	<1.2	proprietary foamer blend (water, amphoteric copolymer, amphoteric polymer, C6 fluorosurfactant, acrylic copolymer, propylene glycol, ethanol)
151-21-3	<0.8	sodium decyl sulfate

Skin contact: Wash contaminated area with soap or mild detergent. Remove contaminated clothing and shoes. Wash clothing before reuse. Get medical attention if irritation persists.

Eye contact: Check for and remove contact lens. Immediately flush with plenty of water for at least 15 minutes. Get medical attention immediately.

Inhalation: If symptoms occur, move affected person to fresh air. If not breathing, give artificial respiration. If symptoms persist, get medical attention promptly.

Ingestion: If product is swallowed, do not induce vomiting. If vomiting occurs keep head lower than hips to help prevent aspiration. Never give anything by mouth to an unconscious person. If affected person is conscious, give plenty of water to drink. Get medical attention at once.

5. FIRE-FIGHTING MEASURES

Fire Fighting Procedure: Use water vapor, foam or fog. Firefighters should wear proper protective equipment.

Fire Hazard: N/A

Flash Point (F°, TCC): None

Flammable Limits: LEL: N/A

6. ACCIDENTAL RELEASE MEASURES

Spill Clean Up: Wear appropriate protective equipment (see Section 8). Absorb with an inert material and put spilled material in appropriate waste disposal.

7. HANDLING AND STORAGE

Handling: Avoid contact with eyes, skin and clothing. Avoid breathing vapors or mists. Keep container closed. Wash thoroughly after handling.

Storage: Keep container in cool well ventilated area. Keep container tightly closed. Store away from incompatible materials. Keep out of the reach of children.

8. EXPOSURE CONTROLS / PERSONAL PROTECTION

Engineering measures to reduce exposure:

No special ventilation requirements. General room ventilation is adequate.

Personal Protective Equipment

Eyes: Safety eyewear should be used when there is a likelihood of exposure.

Hand: For prolonged or repeated handling wear impervious chemical resistant gloves.

Skin: Wear normal work place attire.

Respiratory: Avoid breathing vapors, spray or mists.

9. PHYSICAL AND CHEMICAL PROPERTIES

Appearance	clear light red liquid
Odor	characteristic
Upper and lower flammability or explosive limits	not available
Vapor pressure	not available
Odor threshold	not available
Vapor density	not available
pH	7-9
Relative density	1.0-1.02
Melting point/freezing point	not available
Boiling Point deg. F	not available
Solubility water	soluble
Initial boiling point and boiling range	not available
Flash point	not available
Evaporation rate	not available
Auto-ignition temperature	not available
Decomposition temperature	not available
VOC content (%)	<5
Viscosity	not available

10. STABILITY AND REACTIVITY

Stability: Stable

Incompatibility: Strong oxidizing agents.

Polymerization: Will not occur.

Hazardous Decomposition: Carbon monoxide, carbon dioxide, and other organic materials.

11. TOXICOLOGICAL INFORMATION

Toxicity to animals: Oral (Rat) LD50: >2000 mg/kg

12. ECOLOGICAL INFORMATION

12.1 Product upon delivery (concentrate):

Ecotoxic effects:

The product may be used for fighting forest fires up to a concentration of 0.5% without affecting soil biota (Tests of the Hygiene Institute des Ruhrgebietes). No further information.

Ecotoxic data:

Fish toxicity: EC0: 20 mg/l / 48 h (Bericht -Nr. [report No.] 424- 222750/110675/2.000 vom 04.03.2002 of T V Produkt und Umwelt GmbH, K.In, Germany)

EC50: 40 mg/l / 48 h (as aforementioned) Further information: None

12.3 For the application concentration of 3% the following data are available:

Ecotoxic effects: Ready biodegradable. No adverse effects to sewage plants are to be expected (TTC-test by the HygieneInstitute des Ruhrgebietes).

Ecotoxic data for the 3% aqueous solution:

Fish toxicity:

LC50: 1,330 mg/l (Estimation by the Hygiene-Institute des Ruhrgebietes based on the data of the concentrate)

13. DISPOSAL CONSIDERATIONS

Waste Disposal Method: Liquid wastes are not permitted in landfill. Consult local, state, and federal agencies for proper disposal in your area.

Classification: Non-hazardous waste

14. TRANSPORT INFORMATION

Not regulated as hazardous by DOT 14.1 Product:

Shipping Class: 55; NMFC # 048580; Schedule B: 3813.00

14.2 Extinguishers: Shipping Class: 60; NMFC # 069185; Schedule B: 8424.10

Note: DOT classification does not necessarily apply to all sizes. For specific container size exceptions, refer to the Bill of Lading with your shipment.

15. REGULATORY INFORMATION

SARA 313 toxic chemical notification and release reporting: No product found

Clean Water Act (CWA) regulated substance: No product found

Clean Air Act (CAA) 112 regulated toxic substances: No product found

State Regulations: The following ingredients appear on various State's Right to Know lists and/or California's Proposition 65 list:

Ingredient(s)	CAS #	State List
None		

SARA 311/312 Hazard Categories

Immediate: -
Delayed: -
Fire: -
Reactivity: -
Sudden Release of Pressure: -

Canada

WHMIS Hazard Class:

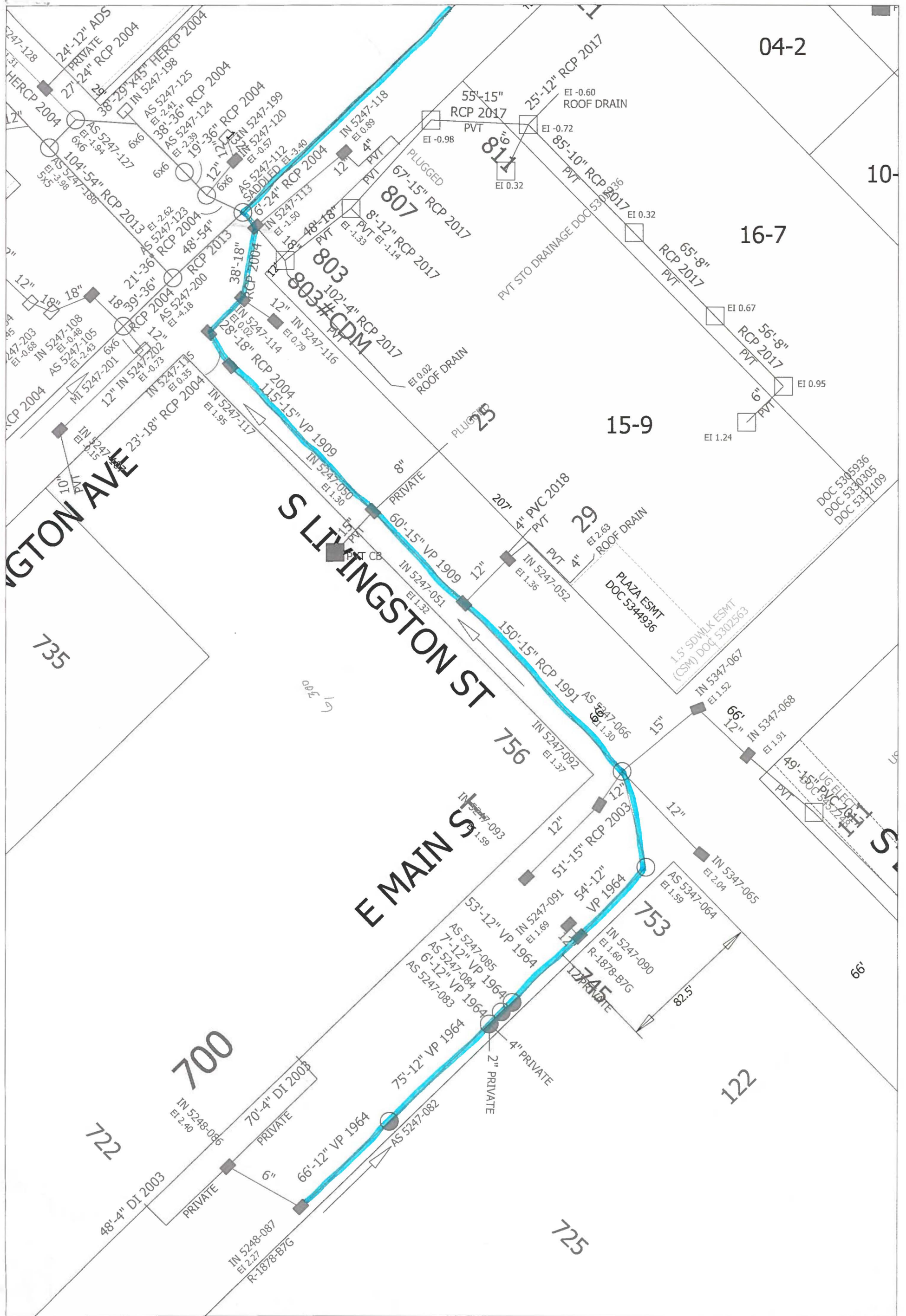
16. OTHER INFORMATION

Reason for revision: Format revision

Additional advice:

Notice to Reader:

As of the date of issuance, we are providing available information relevant to the handling of this material in the workplace. All information contained herein is offered in good faith in the belief that it is accurate. This material safety data sheet shall not be deemed to constitute or imply any warranty of any kind. In the event of an adverse incident associated with this material, this safety data sheet is not intended as a substitute for consultation with appropriately trained personnel (refer to section 1). Some information presented and conclusions herein are from sources other than test data on the substance itself. We do not assume responsibility and expressly disclaim liability for loss, damage or expense arising out of or in any way connected with handling, storage, use or disposal of the product.



Time: 7/22/2019 12:17:28 PM

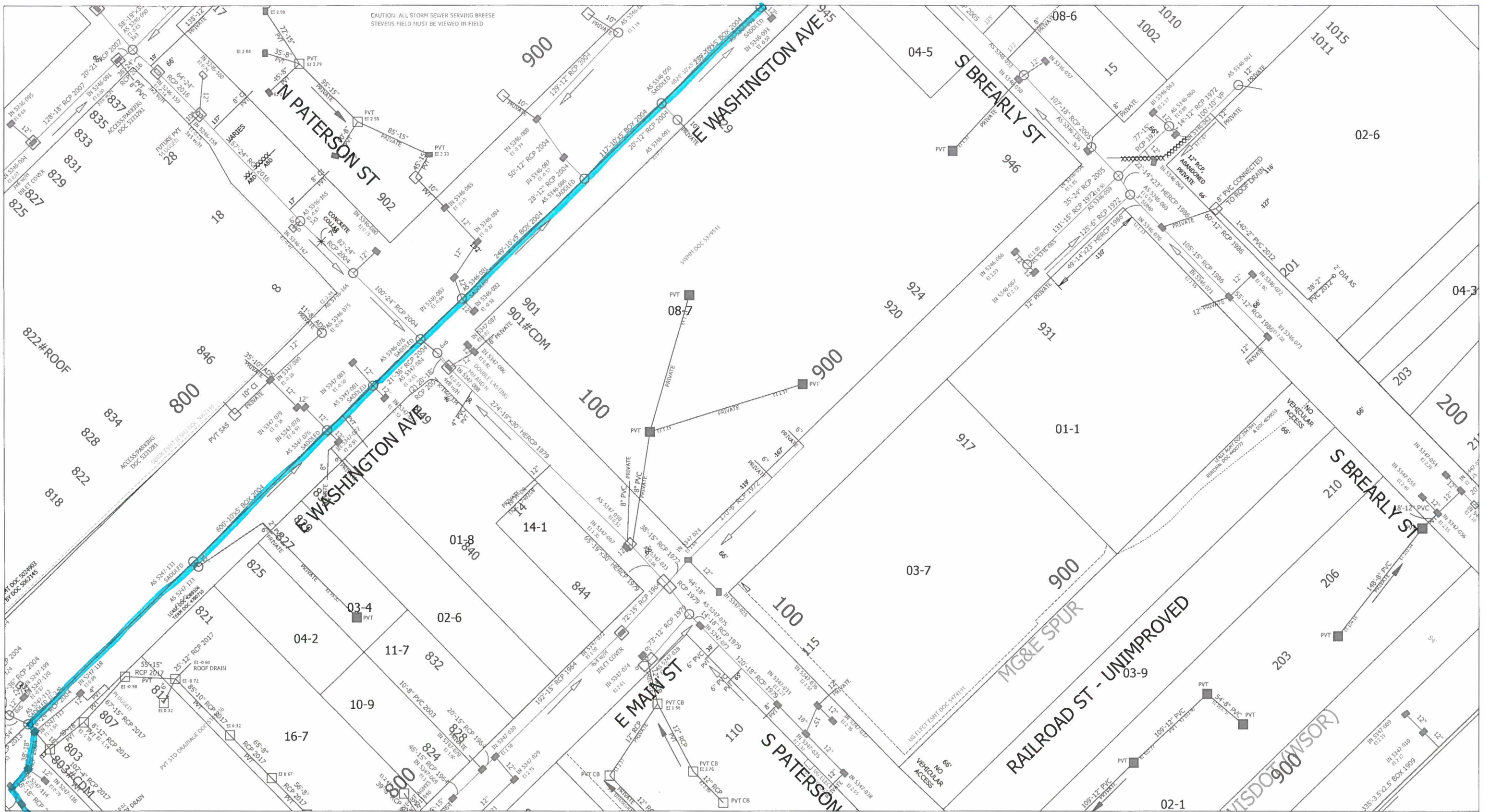
Scale: 1 In = 50 Ft

Session: C:\Users\enmaa\Desktop\storm_san_maa.gts

City of Madison, WI - GIS/Mapping data

Printed By: enmaa

Disclaimer: The City makes no representation about the accuracy of these records and shall not be liable for any damages



Time: 7/22/2019 12:20:00 PM

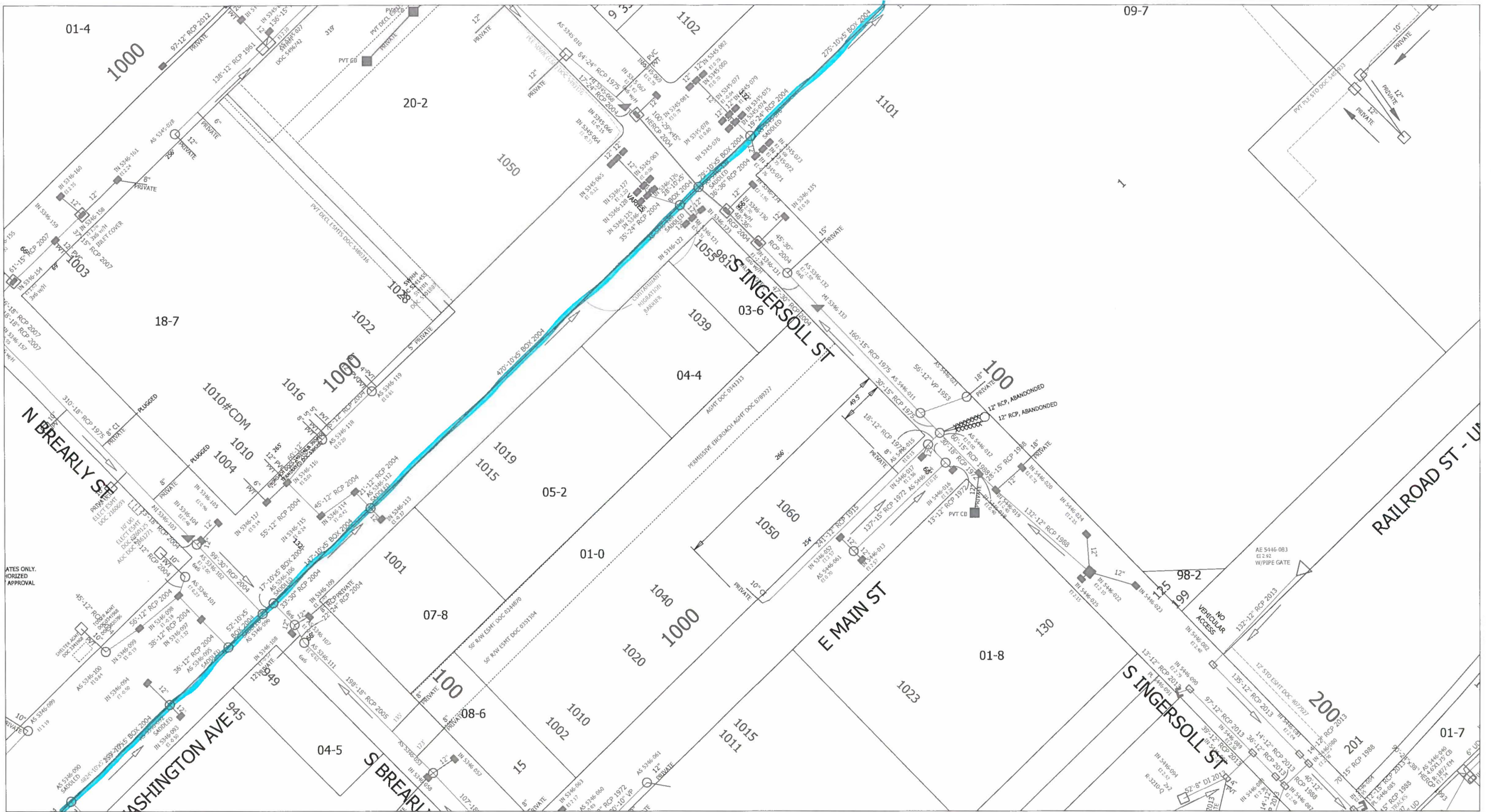
Session: C:\Users\enmaa\Desktop\storm_san_maa.gts

City of Madison, WI - GIS/Mapping data

Printed By: enmaa

Disclaimer: The City makes no representation about the accuracy of these records and shall not be liable for any damages

Scale: 1 In = 100 Ft



Time: 7/22/2019 12:20:43 PM

Scale: 1 In = 100 Ft

Session: C:\Users\enmaa\Desktop\storm_san_maa.gts

City of Madison, WI - GIS/Mapping data

Printed By: enmaa

Disclaimer: The City makes no representation about the accuracy of these records and shall not be liable for any damages



Time: 7/22/2019 12:21:28 PM

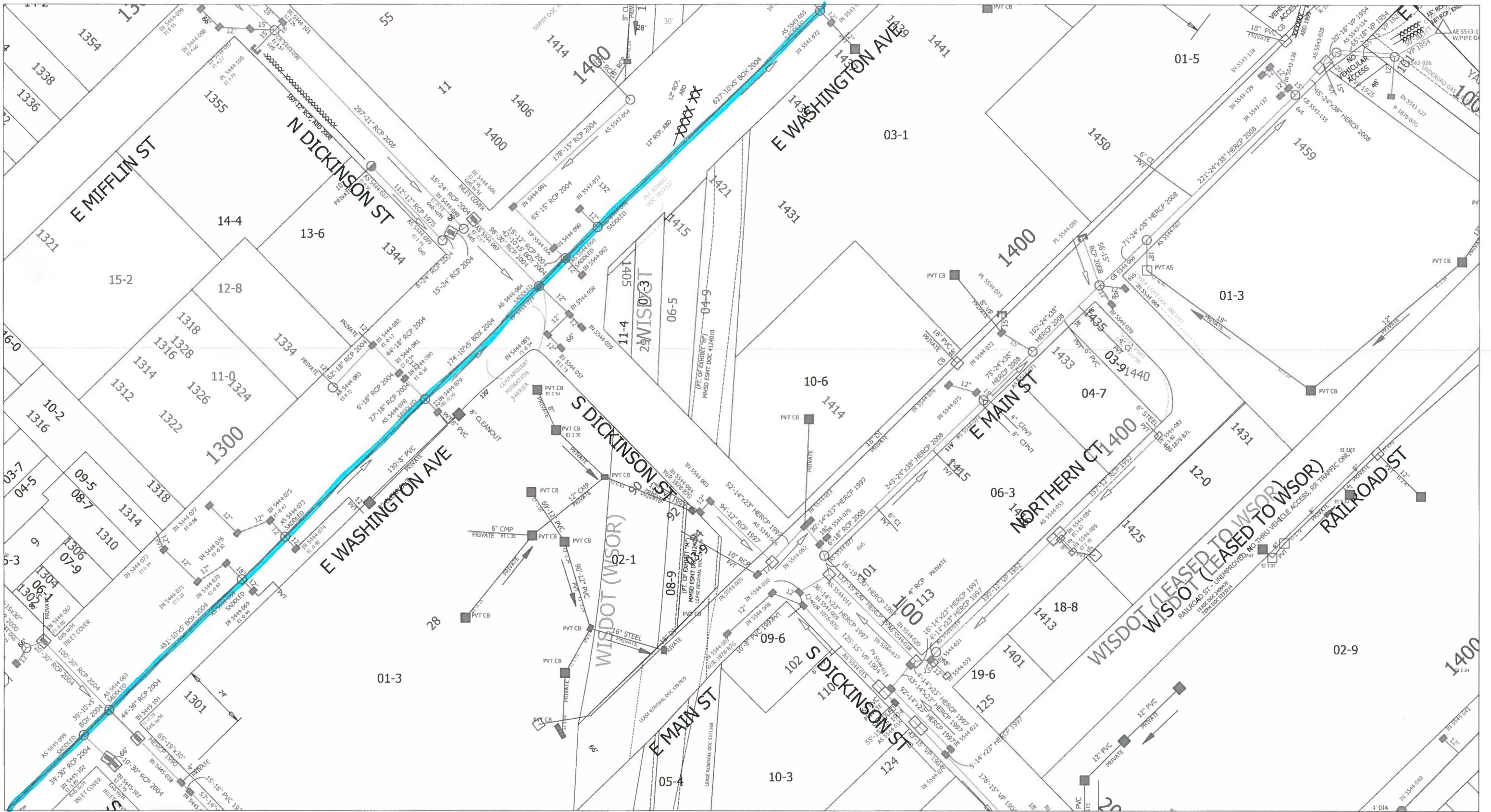
Scale: 1 In = 100 Ft

Session: C:\Users\enmaa\Desktop\storm_san_maa.gts

City of Madison, WI - GIS/Mapping data

Printed By: enmaa

Disclaimer: The City makes no representation about the accuracy of these records and shall not be liable for any damages



Time: 7/22/2019 12:21:54 PM

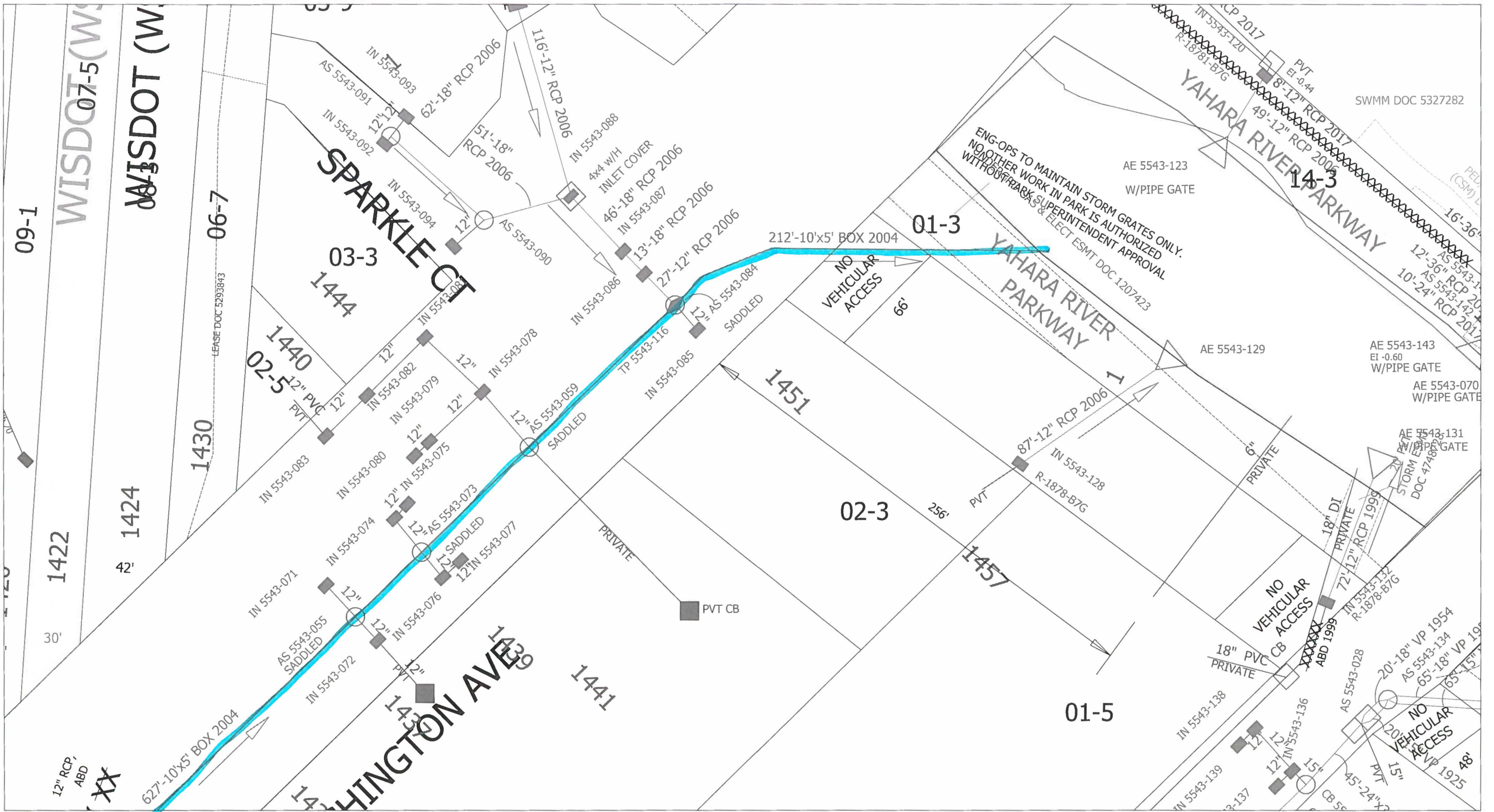
Session: C:\Users\enmaa\Desktop\storm_san_maa.gts

City of Madison, WI - GIS/Mapping data

Printed By: enmaa

Disclaimer: The City makes no representation about the accuracy of these records and shall not be liable for any damages

Scale: 1 In = 100 Ft



Time: 7/22/2019 12:22:56 PM

Scale: 1 In = 50 Ft

Session: C:\Users\enmaa\Desktop\storm_san_maa.gts

City of Madison, WI - GIS/Mapping data

Printed By: enmaa

Disclaimer: The City makes no representation about the accuracy of these records and shall not be liable for any damages