

**Notes:**

1. Orthophoto provided by Winnebago County, WI.
2. The horizontal control is referenced to the NAD83 Wisconsin State Plane Coordinate System (Wisconsin Southern Zone).
3. Sample locations used in SWAC are the centroid of the depicted Thiessen polygon boundaries



GW PARTNERS

**FIGURE 1-26**  
 LOWER FOX RIVER OU1  
 SWAC CALCULATION SURFICIAL  
 PCB CONCENTRATIONS (SOUTH)

Scale: 0 400 800 Feet

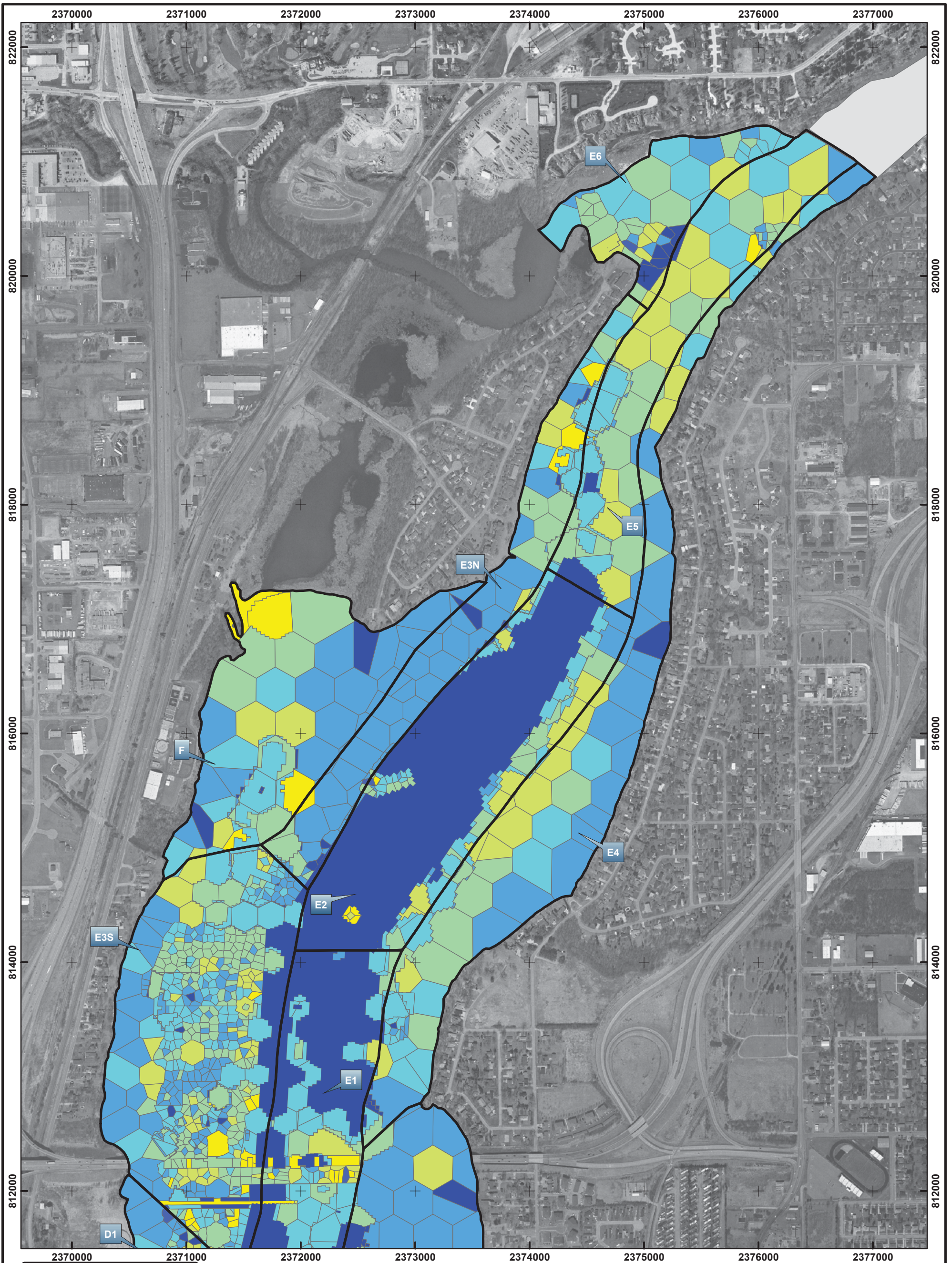
Date: AUGUST, 2010

Drawn By: DAT

Checked By: SGL

Scope: 08G007





**Legend**

Sub-area/DMU Boundaries

Surficial Concentration used for SWAC (ppm)

- 0.00
- 0.0009 - 0.0167
- 0.0168
- 0.0169 - 0.1000
- 0.1001 - 0.2500
- 0.2501 - 0.5000
- 0.5001 - 1.0000
- 1.0001 - 5.0000
- 5.0001 - 10.0000
- 10.0001 - 15.0000

**Notes:**

1. Orthophoto provided by Winnebago County, WI.
2. The horizontal control is referenced to the NAD83 Wisconsin State Plane Coordinate System (Wisconsin Southern Zone).
3. Sample locations used in SWAC are the centroid of the depicted Thiessen polygon boundaries



GW PARTNERS

**FIGURE 1-27**  
 LOWER FOX RIVER OU1  
 SWAC CALCULATION SURFICIAL  
 PCB CONCENTRATIONS (NORTH)

Scale: 0 400 800 Feet

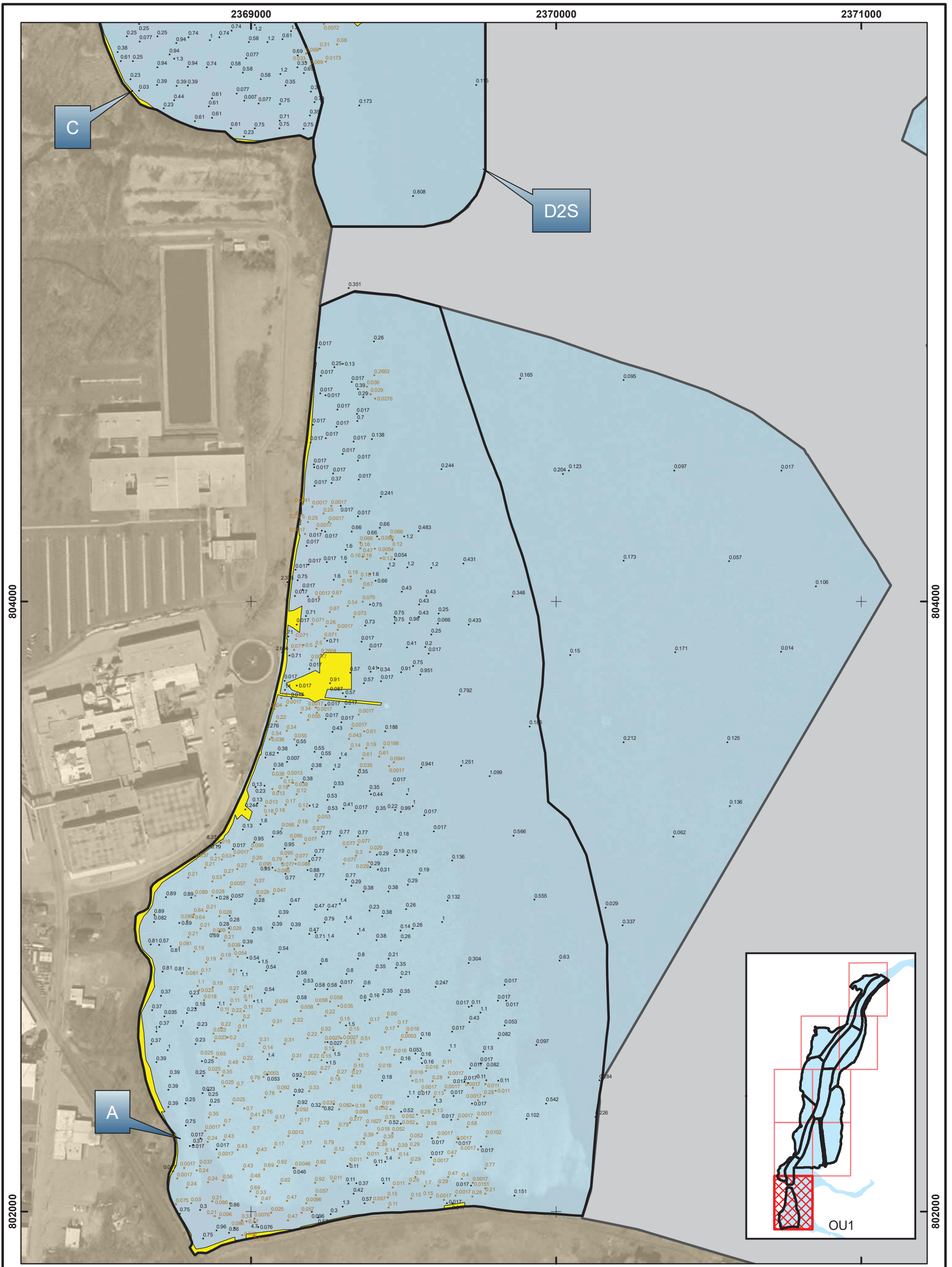
Date: AUGUST, 2010

Drawn By: DAT

Checked By: SGL

Scope: 08G007





**Legend**

- Sample Core Location - Sand Covered
- Sample Core Location
- Sub-area/DMU Boundaries
- SWAC Strata Area for Engineered Cap (0.0065 ppm)
- SWAC Strata Area for Null (0 ppm)
- SWAC Strata Area for Pipeline/Artifact/Shoreline w/o Samples (3.68 ppm)

**Notes:**

1. Orthophoto provided by Winnebago County, WI.
2. The horizontal control is referenced to the NAD83 Wisconsin State Plane Coordinate System (Wisconsin Southern Zone).
3. Values represent surface concentrations used in SWAC calculation (ppm).
4. SWAC strata area for pipeline/artifact/shoreline without samples is estimated from the GMS-SED model with an average concentration of 3.68 ppm.



GW PARTNERS

**FIGURE 1-28A**  
**LOWER FOX RIVER OU1**  
**SWAC CALCULATION SURFICIAL CONCENTRATION**  
**- NUMERICAL PCB VALUE AT LOCATIONS**

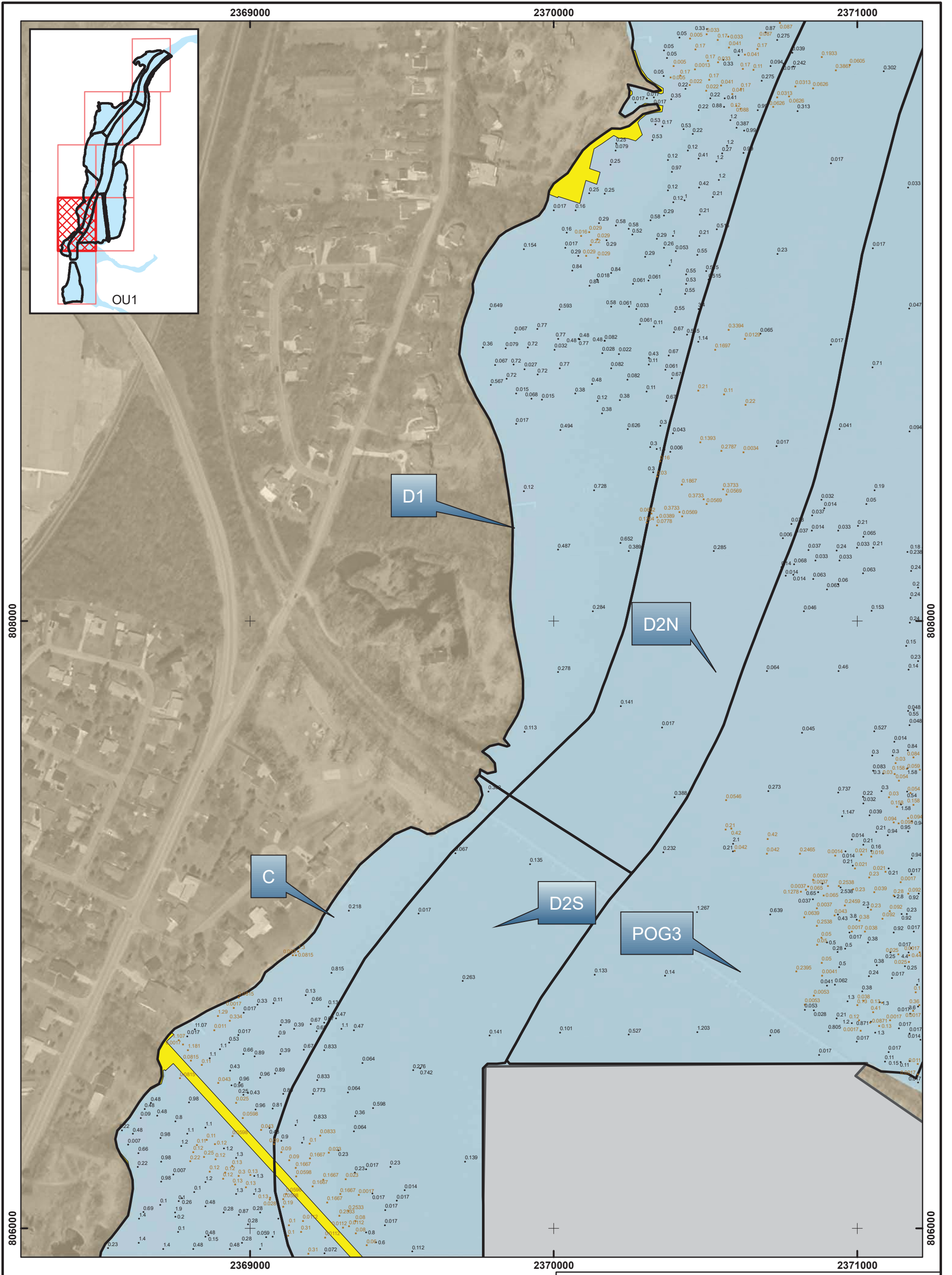
Scale: 0 150 300 Feet

Date: AUGUST, 2010

Drawn By: DAT

Checked By: SGL

Scope: 08G007



**Legend**

- Sample Core Location - Sand Covered
- Sample Core Location
- Sub-area/DMU Boundaries
- SWAC Strata Area for Engineered Cap (0.0065 ppm)
- SWAC Strata Area for Null (0 ppm)
- SWAC Strata Area for Pipeline/Artifact/Shoreline w/o Samples (3.68 ppm)

**Notes:**

1. Orthophoto provided by Winnebago County, WI.
2. The horizontal control is referenced to the NAD83 Wisconsin State Plane Coordinate System (Wisconsin Southern Zone).
3. Values represent surface concentrations used in SWAC calculation (ppm).
4. SWAC strata area for pipeline/artifact/shoreline without samples is estimated from the GMS-SED model with an average concentration of 3.68 ppm.



GW PARTNERS

**FIGURE 1-28B**  
**LOWER FOX RIVER OU1**  
**SWAC CALCULATION SURFICIAL CONCENTRATION**  
**- NUMERICAL PCB VALUE AT LOCATIONS**

Scale: 0 150 300 Feet

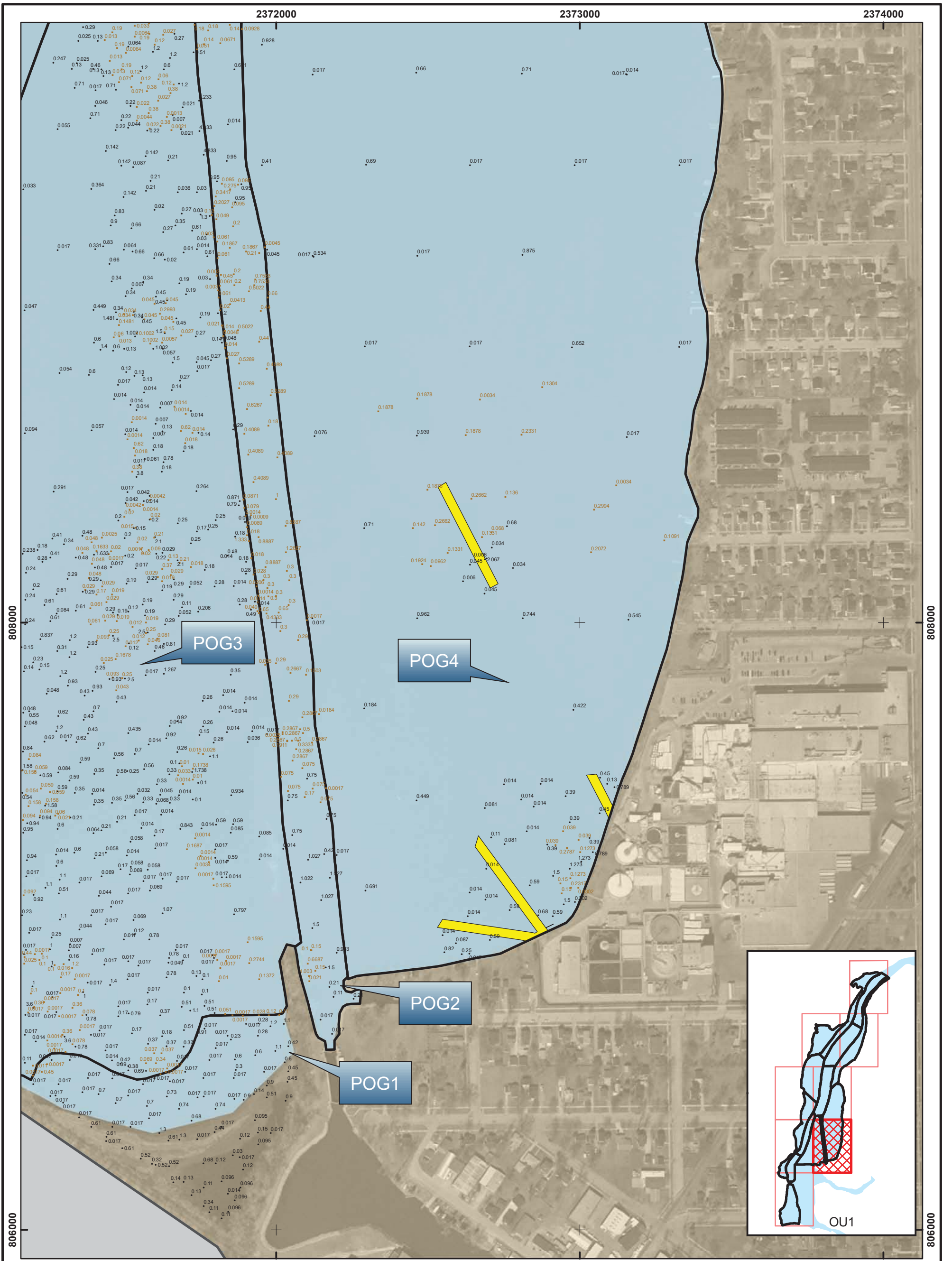
Date: AUGUST, 2010

Drawn By: DAT

Checked By: SGL

Scope: 08G007





**Legend**

- Sample Core Location - Sand Covered
- Sample Core Location
- Sub-area/DMU Boundaries
- SWAC Strata Area for Engineered Cap (0.0065 ppm)
- SWAC Strata Area for Null (0 ppm)
- SWAC Strata Area for Pipeline/Artifact/Shoreline w/o Samples (3.68 ppm)

- Notes:**
1. Orthophoto provided by Winnebago County, WI.
  2. The horizontal control is referenced to the NAD83 Wisconsin State Plane Coordinate System (Wisconsin Southern Zone).
  3. Values represent surface concentrations used in SWAC calculation (ppm).
  4. SWAC strata area for pipeline/artifact/shoreline without samples is estimated from the GMS-SED model with an average concentration of 3.68 ppm.

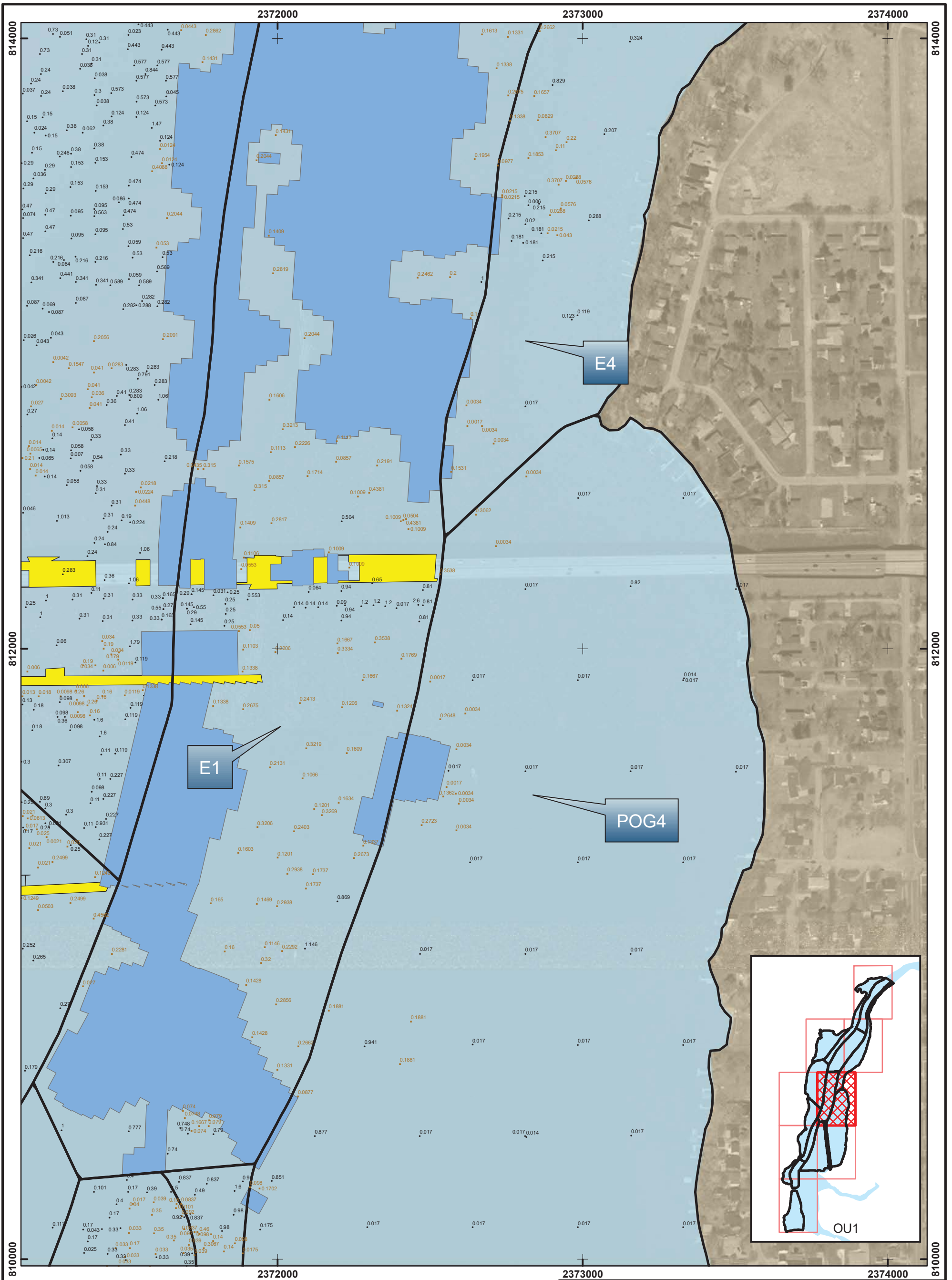


GW PARTNERS

**FIGURE 1-28C**  
**LOWER FOX RIVER OU1**  
**SWAC CALCULATION SURFICIAL CONCENTRATION**  
**- NUMERICAL PCB VALUE AT LOCATIONS**

Scale: 0 150 300 Feet      Date: AUGUST, 2010

Drawn By: DAT      Checked By: SGL      Scope: 08G007



**Legend**

- Sample Core Location - Sand Covered
- Sample Core Location
- Sub-area/DMU Boundaries
- SWAC Strata Area for Engineered Cap (0.0065 ppm)
- SWAC Strata Area for Null (0 ppm)
- SWAC Strata Area for Pipeline/Artifact/Shoreline w/o Samples (3.68 ppm)

- Notes:**
1. Orthophoto provided by Winnebago County, WI.
  2. The horizontal control is referenced to the NAD83 Wisconsin State Plane Coordinate System (Wisconsin Southern Zone).
  3. Values represent surface concentrations used in SWAC calculation (ppm).
  4. SWAC strata area for pipeline/artifact/shoreline without samples is estimated from the GMS-SED model with an average concentration of 3.68 ppm.



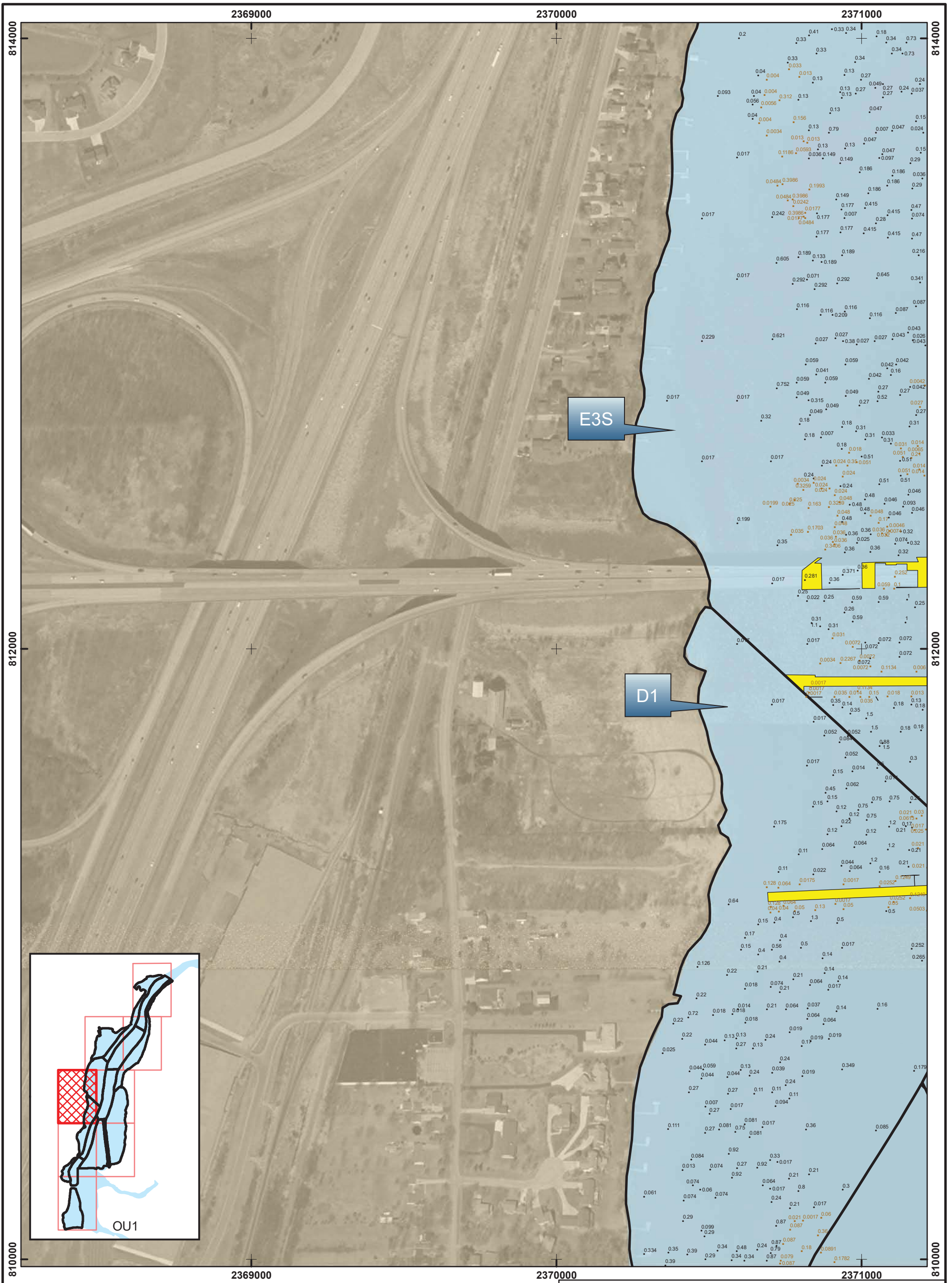
GW PARTNERS

**FIGURE 1-28D**  
**LOWER FOX RIVER OU1**  
**SWAC CALCULATION SURFICIAL CONCENTRATION**  
**- NUMERICAL PCB VALUE AT LOCATIONS**

Scale: 0 150 300 Feet Date: AUGUST, 2010

Drawn By: DAT Checked By: SGL Scope: 08G007





**Legend**

- Sample Core Location - Sand Covered
- Sample Core Location
- Sub-area/DMU Boundaries
- SWAC Strata Area for Engineered Cap (0.0065 ppm)
- SWAC Strata Area for Null (0 ppm)
- SWAC Strata Area for Pipeline/Artifact/Shoreline w/o Samples (3.68 ppm)

**Notes:**

1. Orthophoto provided by Winnebago County, WI.
2. The horizontal control is referenced to the NAD83 Wisconsin State Plane Coordinate System (Wisconsin Southern Zone).
3. Values represent surface concentrations used in SWAC calculation (ppm).
4. SWAC strata area for pipeline/artifact/shoreline without samples is estimated from the GMS-SED model with an average concentration of 3.68 ppm.



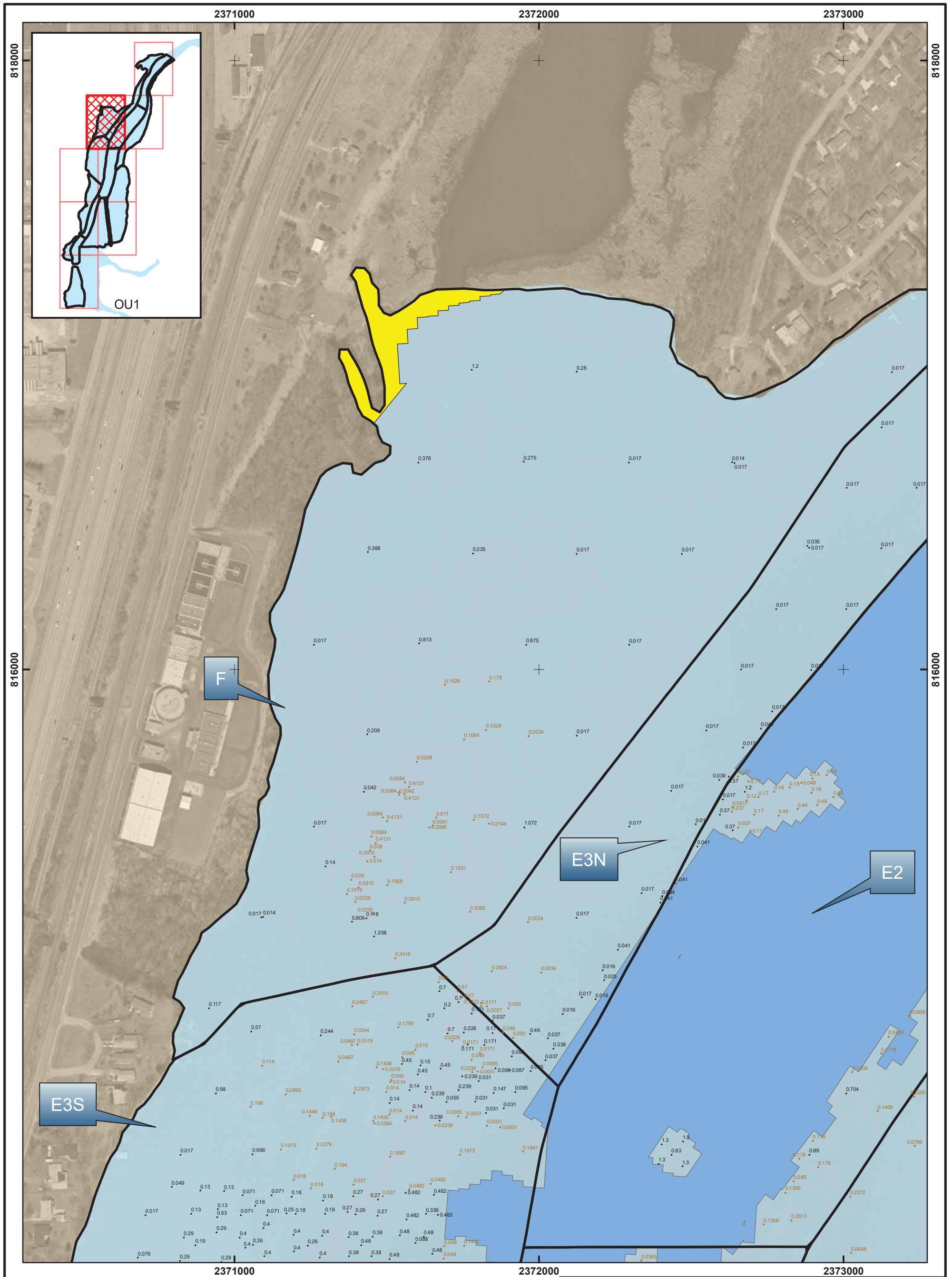
GW PARTNERS

**FIGURE 1-28E**  
**LOWER FOX RIVER OU1**  
**SWAC CALCULATION SURFICIAL CONCENTRATION**  
**- NUMERICAL PCB VALUE AT LOCATIONS**

Scale: 0 150 300 Feet      Date: AUGUST, 2010

Drawn By: DAT      Checked By: SGL      Scope: 08G007





**Legend**

- Sample Core Location - Sand Covered
- Sample Core Location
- Sub-area/DMU Boundaries
- SWAC Strata Area for Engineered Cap (0.0065 ppm)
- SWAC Strata Area for Null (0 ppm)
- SWAC Strata Area for Pipeline/Artifact/Shoreline w/o Samples (3.68 ppm)

**Notes:**

1. Orthophoto provided by Winnebago County, WI.
2. The horizontal control is referenced to the NAD83 Wisconsin State Plane Coordinate System (Wisconsin Southern Zone).
3. Values represent surface concentrations used in SWAC calculation (ppm).
4. SWAC strata area for pipeline/artifact/shoreline without samples is estimated from the GMS-SED model with an average concentration of 3.68 ppm.



GW PARTNERS

**FIGURE 1-28F**  
**LOWER FOX RIVER OU1**  
**SWAC CALCULATION SURFICIAL CONCENTRATION**  
**- NUMERICAL PCB VALUE AT LOCATIONS**

Scale: 0 150 300 Feet

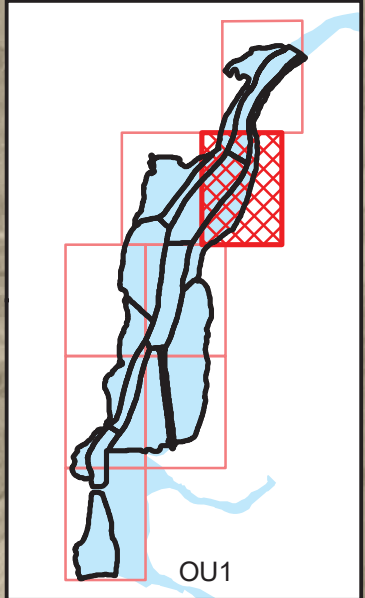
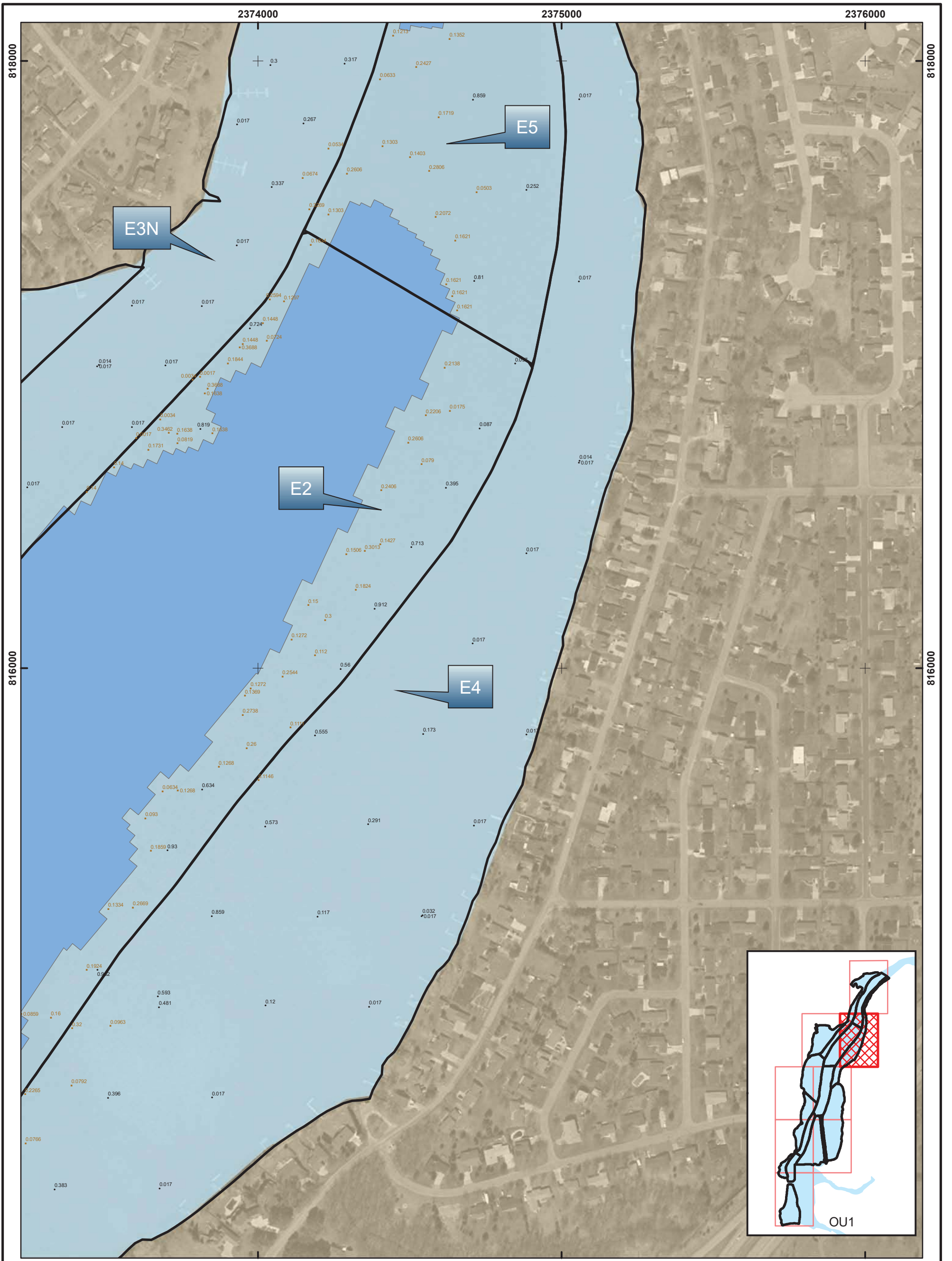
Date: AUGUST, 2010

Drawn By: DAT

Checked By: SGL

Scope: 08G007





**Legend**

- Sample Core Location - Sand Covered
- Sample Core Location
- Sub-area/DMU Boundaries
- SWAC Strata Area for Engineered Cap (0.0065 ppm)
- SWAC Strata Area for Null (0 ppm)
- SWAC Strata Area for Pipeline/Artifact/Shoreline w/o Samples (3.68 ppm)

**Notes:**

1. Orthophoto provided by Winnebago County, WI.
2. The horizontal control is referenced to the NAD83 Wisconsin State Plane Coordinate System (Wisconsin Southern Zone).
3. Values represent surface concentrations used in SWAC calculation (ppm).
4. SWAC strata area for pipeline/artifact/shoreline without samples is estimated from the GMS-SED model with an average concentration of 3.68 ppm.



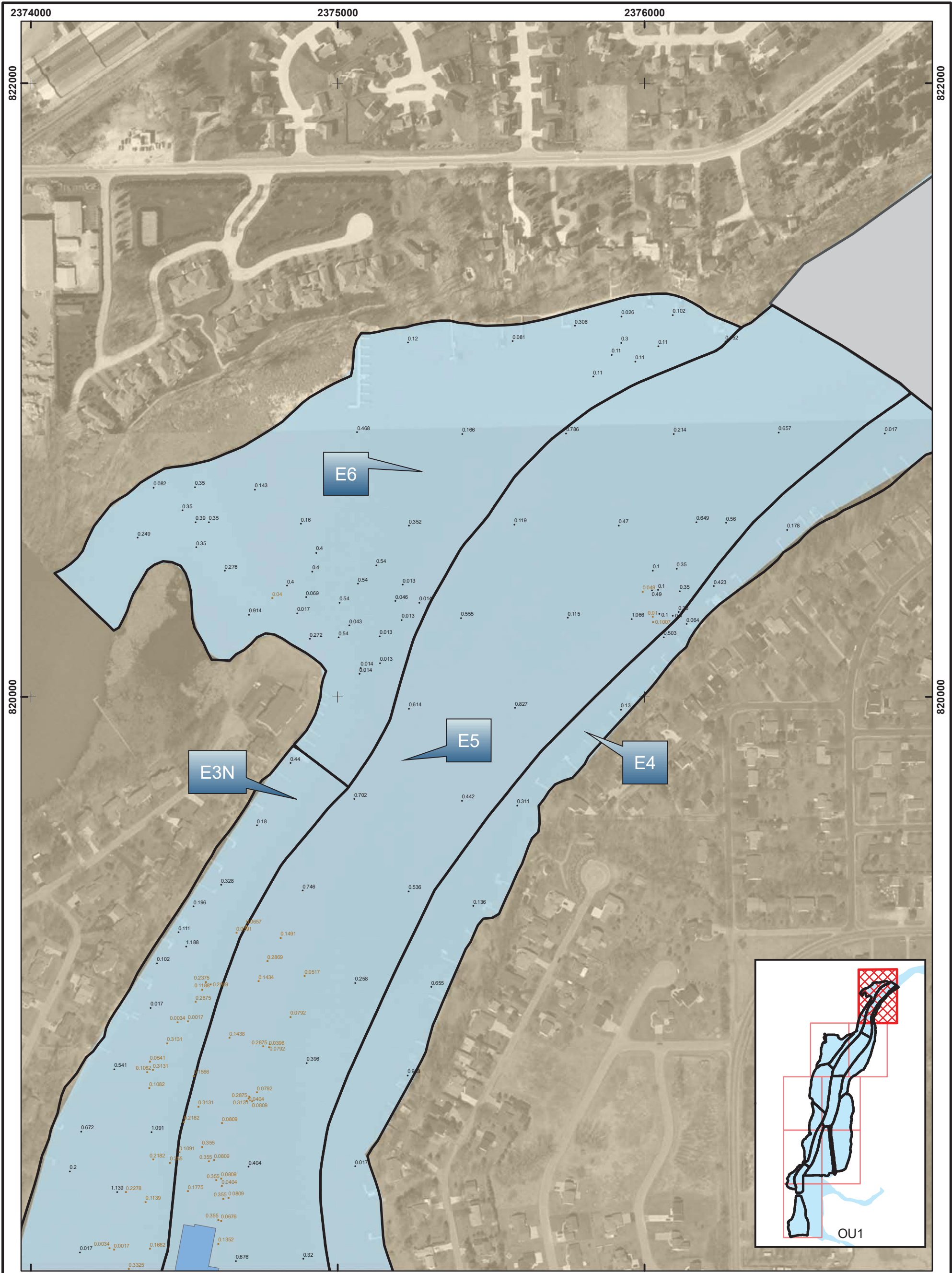
GW PARTNERS

**FIGURE 1-28G**  
**LOWER FOX RIVER OU1**  
**SWAC CALCULATION SURFICIAL CONCENTRATION**  
**- NUMERICAL PCB VALUE AT LOCATIONS**

Scale: 0 150 300 Feet      Date: AUGUST, 2010

Drawn By: DAT      Checked By: SGL      Scope: 08G007





**Legend**

- Sample Core Location - Sand Covered
- Sample Core Location
- Sub-area/DMU Boundaries
- SWAC Strata Area for Engineered Cap (0.0065 ppm)
- SWAC Strata Area for Null (0 ppm)
- SWAC Strata Area for Pipeline/Artifact/Shoreline w/o Samples (3.68 ppm)

**Notes:**

1. Orthophoto provided by Winnebago County, WI.
2. The horizontal control is referenced to the NAD83 Wisconsin State Plane Coordinate System (Wisconsin Southern Zone).
3. Values represent surface concentrations used in SWAC calculation (ppm).
4. SWAC strata area for pipeline/artifact/shoreline without samples is estimated from the GMS-SED model with an average concentration of 3.68 ppm.



GW PARTNERS

**FIGURE 1-28H**  
**LOWER FOX RIVER OU1**  
**SWAC CALCULATION SURFICIAL CONCENTRATION**  
**- NUMERICAL PCB VALUE AT LOCATIONS**

Scale: 0 150 300 Feet

Date: AUGUST, 2010

Drawn By: DAT

Checked By: SGL

Scope: 08G007