



Wisconsin Public Service Corporation

700 North Adams Street
P.O. Box 19001
Green Bay, WI 54307-9001

www.wisconsinpublicservice.com

July 20, 2021

Ms. Jena Sleboda Braun
Project Manager
United States Environmental Protection Agency
77 W. Jackson Boulevard (SR-6J)
Chicago, Illinois 60604-3590

**RE: June 2021 Monthly Progress Report
Campmarina Former Manufactured Gas Plant
Sheboygan, Wisconsin
Wisconsin Public Services Corporation
CERCLA Docket No. V-W-07-C-862, CERCLIS ID – WIN000510058**

Dear Ms. Sleboda Braun:

Wisconsin Public Services Corporation (WPSC) is providing this monthly progress report for the WPSC Former Campmarina Manufactured Gas Plant (MGP) Site.

1) PROGRESS MADE DURING THE PAST MONTH

- Prepared and submitted May 2021 Monthly Progress Report to United States Environmental Protection Agency (USEPA) by June 26, 2021.
- Second quarter field-measured parameter and groundwater sampling event completed June 14, 2021.

2) ANALYTICAL AND OTHER TESTING RESULTS RECEIVED

- Groundwater analytical results summary table from the June 14, 2021 sampling event and a site map have been included with this monthly progress report.

3) PROJECTED WORK

WPSC Actions

- Submit monthly progress report to USEPA by the 26th of the month.

USEPA Actions

- As discussed on the April 30, 2020 conference call, determine a path for deferral of site authority to the State of Wisconsin.

4) PROBLEMS OR POTENTIAL PROBLEMS ENCOUNTERED

- None

5) ACTUAL OR PLANNED RESOLUTION OF PROBLEMS OR POTENTIAL PROBLEMS

- None

If you have any questions, please don't hesitate to contact me at (414) 221-2577 or glenn.luke@wecenergygroup.com.

Sincerely,

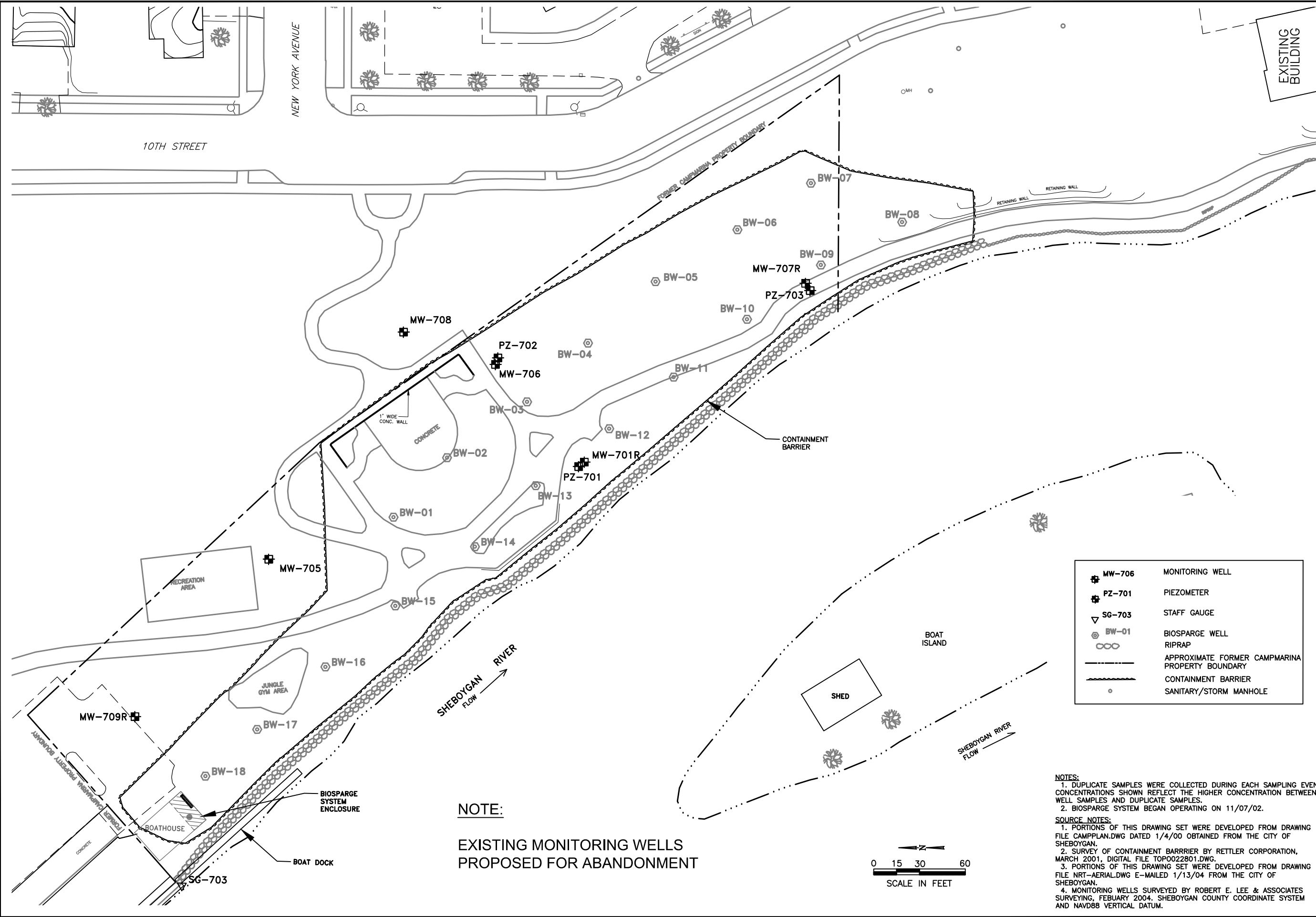


Glenn R. Luke, PE
Principal Environmental Consultant

Enclosures: Site Map
 Table 1. June 2021 Groundwater Analytical Results

For distribution to: Mr. John Feeney, WDNR (US Mail and email)
 Mr. Andrew Cawrse, Ramboll (email)

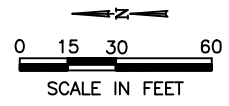
Jan 14, 2020 2:17pm PLOTTED BY: CAMWSEAG SAVED BY: ndraskovitch
 Y: ACADData\Projects\13\1313\B\1313-B-3.d-Monitoring Wells.dwg Layout1
 IMAGES: Y: ACADData\Projects\13\1313\B\1313-B-3.d-Monitoring Wells.dwg
 REFPS:



	MW-706	MONITORING WELL
	PZ-701	PIEZOMETER
	SG-703	STAFF GAUGE
	BW-01	BIOSPARGE WELL
		RIPRAP
		APPROXIMATE FORMER CAMPMARINA PROPERTY BOUNDARY
		CONTAINMENT BARRIER
		SANITARY/STORM MANHOLE

NOTES:
 1. DUPLICATE SAMPLES WERE COLLECTED DURING EACH SAMPLING EVENT. CONCENTRATIONS SHOWN REFLECT THE HIGHER CONCENTRATION BETWEEN WELL SAMPLES AND DUPLICATE SAMPLES.
 2. BIOSPARGE SYSTEM BEGAN OPERATING ON 11/07/02.

SOURCE NOTES:
 1. PORTIONS OF THIS DRAWING SET WERE DEVELOPED FROM DRAWING FILE CAMPPLAN.DWG DATED 1/4/00 OBTAINED FROM THE CITY OF SHEBOYGAN.
 2. SURVEY OF CONTAINMENT BARRRIER BY RETTLER CORPORATION, MARCH 2001, DIGITAL FILE TOP0022801.DWG.
 3. PORTIONS OF THIS DRAWING SET WERE DEVELOPED FROM DRAWING FILE NRT-AERIAL.DWG E-MAILED 1/13/04 FROM THE CITY OF SHEBOYGAN.
 4. MONITORING WELLS SURVEYED BY ROBERT E. LEE & ASSOCIATES SURVEYING, FEBRUARY 2004. SHEBOYGAN COUNTY COORDINATE SYSTEM AND NAVD88 VERTICAL DATUM.



NOTE:
 EXISTING MONITORING WELLS
 PROPOSED FOR ABANDONMENT

DRAWN BY:	NWD	DATE:	04/09/13
CHECKED BY:	JJW	DATE:	04/09/13
APPROVED BY:	JMK	DATE:	05/17/13
DRAWING NO:		1313-B-3.d-Monitoring Wells	
REFERENCE: SEE INFO BLOCK			

MONITORING WELLS

BRRTS #02-60-000095
 CAMP MARINA MANUFACTURED GAS PLANT
 SHEBOYGAN, WISCONSIN

PROJECT NO.
67971

FIGURE NO.
1

