



Wisconsin Public Service Corporation
700 North Adams Street
P.O. Box 19001
Green Bay, WI 54307-9001
www.wisconsinpublicservice.com

January 28, 2021

Mr. Scott Isaacs
Sheboygan City Hall
828 Center Ave #204
Sheboygan, Wisconsin 53081

**RE: Recent Sampling Results Sheboygan Campmarina Former Manufactured Gas Plant
732 North Water Street, Sheboygan, Wisconsin, 53081 WDNR BRRTS# 02-60-000095**

Dear Mr. Isaacs:

WEC Business Services, LLC (WBS), managing the Wisconsin Public Service Corporation (WPSC) former manufactured gas plant site at 732 North Water Street is providing sample results of groundwater samples collected from locations MW701R, MW706, MW707R, MW708, MW709R, PZ701, PZ702, and PZ703 in December 2020 as part of routine, semi-annual monitoring. Wisconsin Administrative Code Chapter NR716.14 requires responsible parties (WPSC for the above-mentioned site) to report sampling results to the property owner, and occupant, as applicable.

Results of the sampling are summarized in the attached. This includes a summary table of the results compared to State guidance values. Copies of the associated laboratory reports and figures showing the locations of samples collected on your property are also included. The results are presented to the USEPA in monthly progress reports.

We appreciate your cooperation as sampling progresses. If you need additional information, please contact John Feeney from the WDNR at (920) 893-8523 or myself at (414) 221-3948.

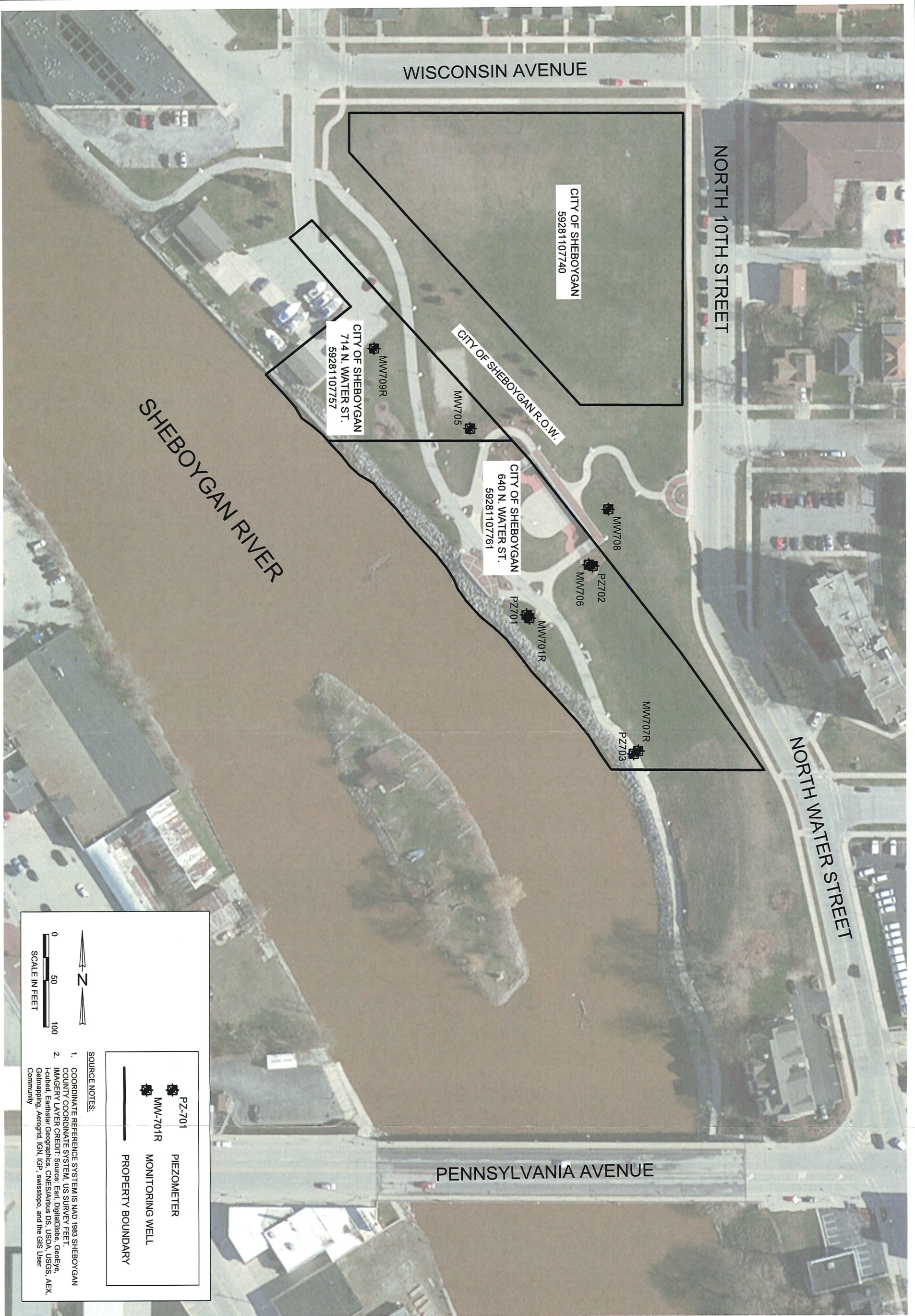
Sincerely,

A handwritten signature in black ink that reads 'Robert Paulson'.

Robert Paulson
Principal Environmental Consultant

Enc: Figure 1. City of Sheboygan
Table 1. December 2020 Groundwater Analytical Results for the City of Sheboygan
Laboratory Report 40219782

CC: USEPA RPM – Ms. Terese Van Donsel
WDNR PM – Mr. John Feeney



CITY OF SHEBOYGAN

RECENT SAMPLING RESULTS
 FORMER CAMPMARINA MANUFACTURED GAS PLANT
 WISCONSIN PUBLIC SERVICE CORPORATION
 SHEBOYGAN, WISCONSIN

BRRTS# 02-60-000095

DRAWN BY:	DMD	DATE:	04/08/16
CHECKED BY:	ANS	DATE:	05/18/16
APPROVED BY:	KRM	DATE:	05/18/16
DRAWING NO: Fig 1_City of Stevens Point			
REFERENCE: .			



PROJECT NO.

67971

FIGURE NO.

1



Pace Analytical Services, LLC
1241 Bellevue Street - Suite 9
Green Bay, WI 54302
(920)469-2436

December 29, 2020

Andrew Cawrse
Ramboll Americas
234 W Florida St
Milwaukee, WI 53204

RE: Project: CAMP MARINA
Pace Project No.: 40219782

Dear Andrew Cawrse:

Enclosed are the analytical results for sample(s) received by the laboratory on December 12, 2020. The results relate only to the samples included in this report. Results reported herein conform to the applicable TNI/NELAC Standards and the laboratory's Quality Manual, where applicable, unless otherwise noted in the body of the report.

The test results provided in this final report were generated by each of the following laboratories within the Pace Network:

- Pace Analytical Services - Green Bay

If you have any questions concerning this report, please feel free to contact me.

Sincerely,

Brian Basten
brian.basten@pacelabs.com
(920)469-2436
Project Manager

Enclosures

cc: NRT Data, OBG



REPORT OF LABORATORY ANALYSIS

This report shall not be reproduced, except in full,
without the written consent of Pace Analytical Services, LLC.



Pace Analytical Services, LLC
1241 Bellevue Street - Suite 9
Green Bay, WI 54302
(920)469-2436

CERTIFICATIONS

Project: CAMP MARINA
Pace Project No.: 40219782

Pace Analytical Services Green Bay

1241 Bellevue Street, Green Bay, WI 54302
Florida/NELAP Certification #: E87948
Illinois Certification #: 200050
Kentucky UST Certification #: 82
Louisiana Certification #: 04168
Minnesota Certification #: 055-999-334
New York Certification #: 12064
North Dakota Certification #: R-150

Virginia VELAP ID: 460263
South Carolina Certification #: 83006001
Texas Certification #: T104704529-14-1
Wisconsin Certification #: 405132750
Wisconsin DATCP Certification #: 105-444
USDA Soil Permit #: P330-16-00157
Federal Fish & Wildlife Permit #: LE51774A-0

REPORT OF LABORATORY ANALYSIS

This report shall not be reproduced, except in full,
without the written consent of Pace Analytical Services, LLC.

SAMPLE SUMMARY

Project: CAMP MARINA
Pace Project No.: 40219782

Lab ID	Sample ID	Matrix	Date Collected	Date Received
40219782001	121020001	Water	12/10/20 10:05	12/12/20 12:00
40219782002	121020002	Water	12/10/20 10:41	12/12/20 12:00
40219782003	121020003	Water	12/10/20 11:57	12/12/20 12:00
40219782004	121120004	Water	12/11/20 08:44	12/12/20 12:00
40219782005	121120005	Water	12/11/20 09:18	12/12/20 12:00
40219782006	121120006	Water	12/11/20 09:23	12/12/20 12:00
40219782007	121120007	Water	12/11/20 09:50	12/12/20 12:00
40219782008	121120008	Water	12/11/20 10:21	12/12/20 12:00
40219782009	121120009	Water	12/11/20 10:55	12/12/20 12:00
40219782010	121120010	Water	12/11/20 11:30	12/12/20 12:00
40219782011	121120011	Water	12/11/20 00:00	12/12/20 12:00

REPORT OF LABORATORY ANALYSIS

This report shall not be reproduced, except in full,
without the written consent of Pace Analytical Services, LLC.

SAMPLE ANALYTE COUNT

Project: CAMP MARINA
Pace Project No.: 40219782

Lab ID	Sample ID	Method	Analysts	Analytes Reported
40219782001	121020001	EPA 8015B Modified	ALD	1
		EPA 8270 by HVI	JJB	20
		EPA 8260	LAP	7
		EPA 300.0	HMB	1
		EPA 353.2	DAW	1
40219782002	121020002	EPA 8015B Modified	ALD	1
		EPA 8270 by HVI	JJB	20
		EPA 8260	LAP	7
		EPA 300.0	HMB	1
		EPA 353.2	DAW	1
40219782003	121020003	EPA 8015B Modified	ALD	1
		EPA 8270 by HVI	JJB	20
		EPA 8260	LAP	7
		EPA 300.0	HMB	1
		EPA 353.2	DAW	1
40219782004	121120004	EPA 8015B Modified	ALD	1
		EPA 8270 by HVI	JJB	20
		EPA 8260	LAP	7
		EPA 300.0	HMB	1
		EPA 353.2	DAW	1
40219782005	121120005	EPA 8015B Modified	ALD	1
		EPA 8270 by HVI	RJN	20
		EPA 8260	LAP	7
		EPA 300.0	HMB	1
		EPA 353.2	DAW	1
40219782006	121120006	EPA 8015B Modified	ALD	1
		EPA 8270 by HVI	RJN	20
		EPA 8260	LAP	7
		EPA 300.0	HMB	1
		EPA 353.2	DAW	1
40219782007	121120007	EPA 8015B Modified	ALD	1
		EPA 8270 by HVI	RJN	20
		EPA 8260	LAP	7
		EPA 300.0	HMB	1
		EPA 353.2	DAW	1
40219782008	121120008	EPA 8015B Modified	ALD	1
		EPA 8270 by HVI	RJN	20

REPORT OF LABORATORY ANALYSIS

This report shall not be reproduced, except in full,
without the written consent of Pace Analytical Services, LLC.



SAMPLE ANALYTE COUNT

Project: CAMP MARINA
 Pace Project No.: 40219782

Lab ID	Sample ID	Method	Analysts	Analytes Reported
40219782009	121120009	EPA 8260	LAP	7
		EPA 300.0	HMB	1
		EPA 353.2	DAW	1
		EPA 8015B Modified	ALD	1
		EPA 8270 by HVI	RJN	20
		EPA 8260	LAP	7
		EPA 300.0	HMB	1
40219782010	121120010	EPA 353.2	DAW	1
		EPA 8015B Modified	ALD	1
		EPA 8270 by HVI	RJN	20
		EPA 8260	LAP	7
		EPA 300.0	HMB	1
		EPA 353.2	DAW	1
		EPA 8260	LAP	7
40219782011	121120011	EPA 8260	LAP	7
		EPA 8260	LAP	7

PASI-G = Pace Analytical Services - Green Bay

REPORT OF LABORATORY ANALYSIS

This report shall not be reproduced, except in full,
 without the written consent of Pace Analytical Services, LLC.



ANALYTICAL RESULTS

Project: CAMP MARINA
 Pace Project No.: 40219782

Sample: 121020001 Lab ID: 40219782001 Collected: 12/10/20 10:05 Received: 12/12/20 12:00 Matrix: Water

Parameters	Results	Units	LOQ	LOD	DF	Prepared	Analyzed	CAS No.	Qual
Methane, Ethane, Ethene GCV									
Analytical Method: EPA 8015B Modified Pace Analytical Services - Green Bay									
Methane	3560	ug/L	56.0	13.3	20		12/23/20 12:26	74-82-8	
8270 MSSV PAH by HVI									
Analytical Method: EPA 8270 by HVI Preparation Method: EPA 3510 Pace Analytical Services - Green Bay									
Acenaphthene	<0.0066	ug/L	0.033	0.0066	1	12/15/20 08:54	12/16/20 13:43	83-32-9	
Acenaphthylene	<0.0054	ug/L	0.027	0.0054	1	12/15/20 08:54	12/16/20 13:43	208-96-8	
Anthracene	<0.011	ug/L	0.057	0.011	1	12/15/20 08:54	12/16/20 13:43	120-12-7	
Benzo(a)anthracene	<0.0082	ug/L	0.041	0.0082	1	12/15/20 08:54	12/16/20 13:43	56-55-3	
Benzo(a)pyrene	<0.011	ug/L	0.057	0.011	1	12/15/20 08:54	12/16/20 13:43	50-32-8	
Benzo(b)fluoranthene	<0.0062	ug/L	0.031	0.0062	1	12/15/20 08:54	12/16/20 13:43	205-99-2	
Benzo(g,h,i)perylene	<0.0074	ug/L	0.037	0.0074	1	12/15/20 08:54	12/16/20 13:43	191-24-2	
Benzo(k)fluoranthene	<0.0082	ug/L	0.041	0.0082	1	12/15/20 08:54	12/16/20 13:43	207-08-9	
Chrysene	<0.014	ug/L	0.071	0.014	1	12/15/20 08:54	12/16/20 13:43	218-01-9	
Dibenz(a,h)anthracene	<0.011	ug/L	0.054	0.011	1	12/15/20 08:54	12/16/20 13:43	53-70-3	
Fluoranthene	<0.012	ug/L	0.058	0.012	1	12/15/20 08:54	12/16/20 13:43	206-44-0	
Fluorene	<0.0087	ug/L	0.043	0.0087	1	12/15/20 08:54	12/16/20 13:43	86-73-7	
Indeno(1,2,3-cd)pyrene	<0.019	ug/L	0.096	0.019	1	12/15/20 08:54	12/16/20 13:43	193-39-5	
1-Methylnaphthalene	<0.0064	ug/L	0.032	0.0064	1	12/15/20 08:54	12/16/20 13:43	90-12-0	
2-Methylnaphthalene	<0.0053	ug/L	0.027	0.0053	1	12/15/20 08:54	12/16/20 13:43	91-57-6	
Naphthalene	<0.020	ug/L	0.10	0.020	1	12/15/20 08:54	12/16/20 13:43	91-20-3	
Phenanthrene	<0.015	ug/L	0.075	0.015	1	12/15/20 08:54	12/16/20 13:43	85-01-8	
Pyrene	<0.0083	ug/L	0.042	0.0083	1	12/15/20 08:54	12/16/20 13:43	129-00-0	
Surrogates									
2-Fluorobiphenyl (S)	54	%	39-120		1	12/15/20 08:54	12/16/20 13:43	321-60-8	
Terphenyl-d14 (S)	79	%	10-159		1	12/15/20 08:54	12/16/20 13:43	1718-51-0	
8260 MSV UST									
Analytical Method: EPA 8260 Pace Analytical Services - Green Bay									
Benzene	<0.25	ug/L	1.0	0.25	1		12/15/20 09:19	71-43-2	
Ethylbenzene	<0.32	ug/L	1.1	0.32	1		12/15/20 09:19	100-41-4	
Toluene	0.31J	ug/L	1.0	0.27	1		12/15/20 09:19	108-88-3	
Xylene (Total)	1.7J	ug/L	3.0	1.5	1		12/15/20 09:19	1330-20-7	
Surrogates									
Dibromofluoromethane (S)	98	%	70-130		1		12/15/20 09:19	1868-53-7	
Toluene-d8 (S)	100	%	70-130		1		12/15/20 09:19	2037-26-5	
4-Bromofluorobenzene (S)	95	%	70-130		1		12/15/20 09:19	460-00-4	
300.0 IC Anions									
Analytical Method: EPA 300.0 Pace Analytical Services - Green Bay									
Sulfate	<2.2	mg/L	10.0	2.2	5		12/22/20 15:40	14808-79-8	D3
353.2 Nitrogen, NO2/NO3 pres.									
Analytical Method: EPA 353.2 Pace Analytical Services - Green Bay									
Nitrogen, NO2 plus NO3	<0.059	mg/L	0.25	0.059	1		12/16/20 12:04		

REPORT OF LABORATORY ANALYSIS

This report shall not be reproduced, except in full,
 without the written consent of Pace Analytical Services, LLC.



ANALYTICAL RESULTS

Project: CAMP MARINA
 Pace Project No.: 40219782

Sample: 121020002 Lab ID: 40219782002 Collected: 12/10/20 10:41 Received: 12/12/20 12:00 Matrix: Water

Parameters	Results	Units	LOQ	LOD	DF	Prepared	Analyzed	CAS No.	Qual
Methane, Ethane, Ethene GCV									
Analytical Method: EPA 8015B Modified Pace Analytical Services - Green Bay									
Methane	5.6	ug/L	2.8	0.66	1		12/23/20 09:56	74-82-8	
8270 MSSV PAH by HVI									
Analytical Method: EPA 8270 by HVI Preparation Method: EPA 3510 Pace Analytical Services - Green Bay									
Acenaphthene	<0.0061	ug/L	0.030	0.0061	1	12/15/20 08:54	12/16/20 08:27	83-32-9	
Acenaphthylene	<0.0050	ug/L	0.025	0.0050	1	12/15/20 08:54	12/16/20 08:27	208-96-8	
Anthracene	<0.010	ug/L	0.052	0.010	1	12/15/20 08:54	12/16/20 08:27	120-12-7	
Benzo(a)anthracene	<0.0076	ug/L	0.038	0.0076	1	12/15/20 08:54	12/16/20 08:27	56-55-3	
Benzo(a)pyrene	<0.011	ug/L	0.053	0.011	1	12/15/20 08:54	12/16/20 08:27	50-32-8	
Benzo(b)fluoranthene	<0.0057	ug/L	0.029	0.0057	1	12/15/20 08:54	12/16/20 08:27	205-99-2	
Benzo(g,h,i)perylene	<0.0068	ug/L	0.034	0.0068	1	12/15/20 08:54	12/16/20 08:27	191-24-2	
Benzo(k)fluoranthene	<0.0076	ug/L	0.038	0.0076	1	12/15/20 08:54	12/16/20 08:27	207-08-9	
Chrysene	<0.013	ug/L	0.065	0.013	1	12/15/20 08:54	12/16/20 08:27	218-01-9	
Dibenz(a,h)anthracene	<0.010	ug/L	0.050	0.010	1	12/15/20 08:54	12/16/20 08:27	53-70-3	
Fluoranthene	<0.011	ug/L	0.053	0.011	1	12/15/20 08:54	12/16/20 08:27	206-44-0	
Fluorene	<0.0080	ug/L	0.040	0.0080	1	12/15/20 08:54	12/16/20 08:27	86-73-7	
Indeno(1,2,3-cd)pyrene	<0.018	ug/L	0.088	0.018	1	12/15/20 08:54	12/16/20 08:27	193-39-5	
1-Methylnaphthalene	<0.0059	ug/L	0.030	0.0059	1	12/15/20 08:54	12/16/20 08:27	90-12-0	
2-Methylnaphthalene	<0.0049	ug/L	0.024	0.0049	1	12/15/20 08:54	12/16/20 08:27	91-57-6	
Naphthalene	<0.018	ug/L	0.092	0.018	1	12/15/20 08:54	12/16/20 08:27	91-20-3	
Phenanthrene	<0.014	ug/L	0.069	0.014	1	12/15/20 08:54	12/16/20 08:27	85-01-8	
Pyrene	<0.0076	ug/L	0.038	0.0076	1	12/15/20 08:54	12/16/20 08:27	129-00-0	
Surrogates									
2-Fluorobiphenyl (S)	54	%	39-120		1	12/15/20 08:54	12/16/20 08:27	321-60-8	
Terphenyl-d14 (S)	86	%	10-159		1	12/15/20 08:54	12/16/20 08:27	1718-51-0	
8260 MSV UST									
Analytical Method: EPA 8260 Pace Analytical Services - Green Bay									
Benzene	<0.25	ug/L	1.0	0.25	1		12/15/20 14:10	71-43-2	
Ethylbenzene	<0.32	ug/L	1.1	0.32	1		12/15/20 14:10	100-41-4	
Toluene	<0.27	ug/L	1.0	0.27	1		12/15/20 14:10	108-88-3	
Xylene (Total)	<1.5	ug/L	3.0	1.5	1		12/15/20 14:10	1330-20-7	
Surrogates									
Dibromofluoromethane (S)	96	%	70-130		1		12/15/20 14:10	1868-53-7	
Toluene-d8 (S)	98	%	70-130		1		12/15/20 14:10	2037-26-5	
4-Bromofluorobenzene (S)	97	%	70-130		1		12/15/20 14:10	460-00-4	
300.0 IC Anions									
Analytical Method: EPA 300.0 Pace Analytical Services - Green Bay									
Sulfate	75.4	mg/L	40.0	8.9	20		12/23/20 13:46	14808-79-8	
353.2 Nitrogen, NO2/NO3 pres.									
Analytical Method: EPA 353.2 Pace Analytical Services - Green Bay									
Nitrogen, NO2 plus NO3	0.082J	mg/L	0.25	0.059	1		12/16/20 12:04		

REPORT OF LABORATORY ANALYSIS

This report shall not be reproduced, except in full,
 without the written consent of Pace Analytical Services, LLC.



ANALYTICAL RESULTS

Project: CAMP MARINA
 Pace Project No.: 40219782

Sample: 121020003 Lab ID: 40219782003 Collected: 12/10/20 11:57 Received: 12/12/20 12:00 Matrix: Water

Parameters	Results	Units	LOQ	LOD	DF	Prepared	Analyzed	CAS No.	Qual
Methane, Ethane, Ethene GCV									
Analytical Method: EPA 8015B Modified Pace Analytical Services - Green Bay									
Methane	3530	ug/L	140	33.2	50		12/23/20 12:53	74-82-8	
8270 MSSV PAH by HVI									
Analytical Method: EPA 8270 by HVI Preparation Method: EPA 3510 Pace Analytical Services - Green Bay									
Acenaphthene	37.0	ug/L	3.2	0.64	100	12/15/20 08:54	12/16/20 14:39	83-32-9	
Acenaphthylene	1.3J	ug/L	2.6	0.52	100	12/15/20 08:54	12/16/20 14:39	208-96-8	
Anthracene	2.7J	ug/L	5.5	1.1	100	12/15/20 08:54	12/16/20 14:39	120-12-7	
Benzo(a)anthracene	<0.79	ug/L	4.0	0.79	100	12/15/20 08:54	12/16/20 14:39	56-55-3	
Benzo(a)pyrene	<1.1	ug/L	5.5	1.1	100	12/15/20 08:54	12/16/20 14:39	50-32-8	
Benzo(b)fluoranthene	<0.60	ug/L	3.0	0.60	100	12/15/20 08:54	12/16/20 14:39	205-99-2	
Benzo(g,h,i)perylene	<0.71	ug/L	3.6	0.71	100	12/15/20 08:54	12/16/20 14:39	191-24-2	
Benzo(k)fluoranthene	<0.79	ug/L	4.0	0.79	100	12/15/20 08:54	12/16/20 14:39	207-08-9	
Chrysene	<1.4	ug/L	6.9	1.4	100	12/15/20 08:54	12/16/20 14:39	218-01-9	
Dibenz(a,h)anthracene	<1.1	ug/L	5.3	1.1	100	12/15/20 08:54	12/16/20 14:39	53-70-3	
Fluoranthene	<1.1	ug/L	5.6	1.1	100	12/15/20 08:54	12/16/20 14:39	206-44-0	
Fluorene	7.1	ug/L	4.2	0.84	100	12/15/20 08:54	12/16/20 14:39	86-73-7	
Indeno(1,2,3-cd)pyrene	<1.9	ug/L	9.3	1.9	100	12/15/20 08:54	12/16/20 14:39	193-39-5	
1-Methylnaphthalene	66.3	ug/L	3.1	0.62	100	12/15/20 08:54	12/16/20 14:39	90-12-0	
2-Methylnaphthalene	11.4	ug/L	2.6	0.52	100	12/15/20 08:54	12/16/20 14:39	91-57-6	
Naphthalene	404	ug/L	9.6	1.9	100	12/15/20 08:54	12/16/20 14:39	91-20-3	
Phenanthrene	10.2	ug/L	7.3	1.5	100	12/15/20 08:54	12/16/20 14:39	85-01-8	
Pyrene	1.4J	ug/L	4.0	0.81	100	12/15/20 08:54	12/16/20 14:39	129-00-0	
Surrogates									
2-Fluorobiphenyl (S)	0	%	39-120		100	12/15/20 08:54	12/16/20 14:39	321-60-8	S4
Terphenyl-d14 (S)	0	%	10-159		100	12/15/20 08:54	12/16/20 14:39	1718-51-0	S4
8260 MSV UST									
Analytical Method: EPA 8260 Pace Analytical Services - Green Bay									
Benzene	2920	ug/L	40.0	9.9	40		12/15/20 12:14	71-43-2	
Ethylbenzene	2080	ug/L	42.5	12.7	40		12/15/20 12:14	100-41-4	
Toluene	28.3J	ug/L	40.0	10.8	40		12/15/20 12:14	108-88-3	
Xylene (Total)	559	ug/L	120	60.0	40		12/15/20 12:14	1330-20-7	
Surrogates									
Dibromofluoromethane (S)	98	%	70-130		40		12/15/20 12:14	1868-53-7	
Toluene-d8 (S)	100	%	70-130		40		12/15/20 12:14	2037-26-5	
4-Bromofluorobenzene (S)	100	%	70-130		40		12/15/20 12:14	460-00-4	
300.0 IC Anions									
Analytical Method: EPA 300.0 Pace Analytical Services - Green Bay									
Sulfate	5.4J	mg/L	10.0	2.2	5		12/22/20 17:20	14808-79-8	D3
353.2 Nitrogen, NO2/NO3 pres.									
Analytical Method: EPA 353.2 Pace Analytical Services - Green Bay									
Nitrogen, NO2 plus NO3	<0.059	mg/L	0.25	0.059	1		12/16/20 12:06		

REPORT OF LABORATORY ANALYSIS

This report shall not be reproduced, except in full,
 without the written consent of Pace Analytical Services, LLC.



ANALYTICAL RESULTS

Project: CAMP MARINA
 Pace Project No.: 40219782

Sample: 121120004 Lab ID: 40219782004 Collected: 12/11/20 08:44 Received: 12/12/20 12:00 Matrix: Water

Parameters	Results	Units	LOQ	LOD	DF	Prepared	Analyzed	CAS No.	Qual
Methane, Ethane, Ethene GCV									
Analytical Method: EPA 8015B Modified Pace Analytical Services - Green Bay									
Methane	706	ug/L	28.0	6.6	10		12/23/20 13:00	74-82-8	
8270 MSSV PAH by HVI									
Analytical Method: EPA 8270 by HVI Preparation Method: EPA 3510 Pace Analytical Services - Green Bay									
Acenaphthene	0.50	ug/L	0.032	0.0064	1	12/15/20 08:54	12/16/20 14:02	83-32-9	
Acenaphthylene	0.025J	ug/L	0.026	0.0052	1	12/15/20 08:54	12/16/20 14:02	208-96-8	
Anthracene	0.023J	ug/L	0.055	0.011	1	12/15/20 08:54	12/16/20 14:02	120-12-7	
Benzo(a)anthracene	<0.0079	ug/L	0.040	0.0079	1	12/15/20 08:54	12/16/20 14:02	56-55-3	
Benzo(a)pyrene	<0.011	ug/L	0.055	0.011	1	12/15/20 08:54	12/16/20 14:02	50-32-8	
Benzo(b)fluoranthene	<0.0060	ug/L	0.030	0.0060	1	12/15/20 08:54	12/16/20 14:02	205-99-2	
Benzo(g,h,i)perylene	<0.0071	ug/L	0.036	0.0071	1	12/15/20 08:54	12/16/20 14:02	191-24-2	
Benzo(k)fluoranthene	<0.0079	ug/L	0.040	0.0079	1	12/15/20 08:54	12/16/20 14:02	207-08-9	
Chrysene	<0.014	ug/L	0.069	0.014	1	12/15/20 08:54	12/16/20 14:02	218-01-9	
Dibenz(a,h)anthracene	<0.011	ug/L	0.053	0.011	1	12/15/20 08:54	12/16/20 14:02	53-70-3	
Fluoranthene	<0.011	ug/L	0.056	0.011	1	12/15/20 08:54	12/16/20 14:02	206-44-0	
Fluorene	0.069	ug/L	0.042	0.0084	1	12/15/20 08:54	12/16/20 14:02	86-73-7	
Indeno(1,2,3-cd)pyrene	<0.019	ug/L	0.093	0.019	1	12/15/20 08:54	12/16/20 14:02	193-39-5	
1-Methylnaphthalene	0.22	ug/L	0.031	0.0062	1	12/15/20 08:54	12/16/20 14:02	90-12-0	
2-Methylnaphthalene	0.035	ug/L	0.026	0.0052	1	12/15/20 08:54	12/16/20 14:02	91-57-6	
Naphthalene	0.11	ug/L	0.096	0.019	1	12/15/20 08:54	12/16/20 14:02	91-20-3	
Phenanthrene	0.041J	ug/L	0.073	0.015	1	12/15/20 08:54	12/16/20 14:02	85-01-8	
Pyrene	<0.0081	ug/L	0.040	0.0081	1	12/15/20 08:54	12/16/20 14:02	129-00-0	
Surrogates									
2-Fluorobiphenyl (S)	54	%	39-120		1	12/15/20 08:54	12/16/20 14:02	321-60-8	
Terphenyl-d14 (S)	84	%	10-159		1	12/15/20 08:54	12/16/20 14:02	1718-51-0	
8260 MSV UST									
Analytical Method: EPA 8260 Pace Analytical Services - Green Bay									
Benzene	244	ug/L	2.5	0.62	2.5		12/15/20 13:31	71-43-2	
Ethylbenzene	87.9	ug/L	2.7	0.80	2.5		12/15/20 13:31	100-41-4	
Toluene	6.0	ug/L	2.5	0.67	2.5		12/15/20 13:31	108-88-3	
Xylene (Total)	44.6	ug/L	7.5	3.8	2.5		12/15/20 13:31	1330-20-7	
Surrogates									
Dibromofluoromethane (S)	98	%	70-130		2.5		12/15/20 13:31	1868-53-7	
Toluene-d8 (S)	97	%	70-130		2.5		12/15/20 13:31	2037-26-5	
4-Bromofluorobenzene (S)	100	%	70-130		2.5		12/15/20 13:31	460-00-4	
300.0 IC Anions									
Analytical Method: EPA 300.0 Pace Analytical Services - Green Bay									
Sulfate	0.58J	mg/L	2.0	0.44	1		12/22/20 17:35	14808-79-8	
353.2 Nitrogen, NO2/NO3 pres.									
Analytical Method: EPA 353.2 Pace Analytical Services - Green Bay									
Nitrogen, NO2 plus NO3	<0.059	mg/L	0.25	0.059	1		12/16/20 12:07		

REPORT OF LABORATORY ANALYSIS

This report shall not be reproduced, except in full,
 without the written consent of Pace Analytical Services, LLC.

ANALYTICAL RESULTS

Project: CAMP MARINA
Pace Project No.: 40219782

Sample: 121120005 Lab ID: 40219782005 Collected: 12/11/20 09:18 Received: 12/12/20 12:00 Matrix: Water

Parameters	Results	Units	LOQ	LOD	DF	Prepared	Analyzed	CAS No.	Qual
Methane, Ethane, Ethene GCV									
Analytical Method: EPA 8015B Modified Pace Analytical Services - Green Bay									
Methane	4700	ug/L	140	33.2	50		12/23/20 13:07	74-82-8	
8270 MSSV PAH by HVI									
Analytical Method: EPA 8270 by HVI Preparation Method: EPA 3510 Pace Analytical Services - Green Bay									
Acenaphthene	97.7	ug/L	16.1	3.2	500	12/17/20 08:36	12/18/20 09:07	83-32-9	
Acenaphthylene	<2.6	ug/L	13.2	2.6	500	12/17/20 08:36	12/18/20 09:07	208-96-8	
Anthracene	<5.6	ug/L	27.8	5.6	500	12/17/20 08:36	12/18/20 09:07	120-12-7	
Benzo(a)anthracene	<4.0	ug/L	20.1	4.0	500	12/17/20 08:36	12/18/20 09:07	56-55-3	
Benzo(a)pyrene	<5.6	ug/L	28.0	5.6	500	12/17/20 08:36	12/18/20 09:07	50-32-8	
Benzo(b)fluoranthene	<3.1	ug/L	15.3	3.1	500	12/17/20 08:36	12/18/20 09:07	205-99-2	
Benzo(g,h,i)perylene	<3.6	ug/L	18.0	3.6	500	12/17/20 08:36	12/18/20 09:07	191-24-2	
Benzo(k)fluoranthene	<4.0	ug/L	20.1	4.0	500	12/17/20 08:36	12/18/20 09:07	207-08-9	
Chrysene	<6.9	ug/L	34.7	6.9	500	12/17/20 08:36	12/18/20 09:07	218-01-9	
Dibenz(a,h)anthracene	<5.3	ug/L	26.6	5.3	500	12/17/20 08:36	12/18/20 09:07	53-70-3	
Fluoranthene	<5.7	ug/L	28.4	5.7	500	12/17/20 08:36	12/18/20 09:07	206-44-0	
Fluorene	19.8J	ug/L	21.2	4.2	500	12/17/20 08:36	12/18/20 09:07	86-73-7	
Indeno(1,2,3-cd)pyrene	<9.4	ug/L	46.9	9.4	500	12/17/20 08:36	12/18/20 09:07	193-39-5	
1-Methylnaphthalene	128	ug/L	15.7	3.1	500	12/17/20 08:36	12/18/20 09:07	90-12-0	
2-Methylnaphthalene	88.7	ug/L	13.0	2.6	500	12/17/20 08:36	12/18/20 09:07	91-57-6	
Naphthalene	936	ug/L	48.7	9.8	500	12/17/20 08:36	12/18/20 09:07	91-20-3	
Phenanthrene	47.9	ug/L	36.7	7.3	500	12/17/20 08:36	12/18/20 09:07	85-01-8	
Pyrene	6.2J	ug/L	20.4	4.1	500	12/17/20 08:36	12/18/20 09:07	129-00-0	
Surrogates									
2-Fluorobiphenyl (S)	0	%	39-120		500	12/17/20 08:36	12/18/20 09:07	321-60-8	S4
Terphenyl-d14 (S)	0	%	10-159		500	12/17/20 08:36	12/18/20 09:07	1718-51-0	S4
8260 MSV UST									
Analytical Method: EPA 8260 Pace Analytical Services - Green Bay									
Benzene	3640	ug/L	40.0	9.9	40		12/15/20 12:33	71-43-2	
Ethylbenzene	271	ug/L	42.5	12.7	40		12/15/20 12:33	100-41-4	
Toluene	15.2J	ug/L	40.0	10.8	40		12/15/20 12:33	108-88-3	
Xylene (Total)	156	ug/L	120	60.0	40		12/15/20 12:33	1330-20-7	
Surrogates									
Dibromofluoromethane (S)	99	%	70-130		40		12/15/20 12:33	1868-53-7	
Toluene-d8 (S)	99	%	70-130		40		12/15/20 12:33	2037-26-5	
4-Bromofluorobenzene (S)	95	%	70-130		40		12/15/20 12:33	460-00-4	
300.0 IC Anions									
Analytical Method: EPA 300.0 Pace Analytical Services - Green Bay									
Sulfate	<2.2	mg/L	10.0	2.2	5		12/22/20 17:49	14808-79-8	D3
353.2 Nitrogen, NO2/NO3 pres.									
Analytical Method: EPA 353.2 Pace Analytical Services - Green Bay									
Nitrogen, NO2 plus NO3	<0.059	mg/L	0.25	0.059	1		12/16/20 12:08		

REPORT OF LABORATORY ANALYSIS

This report shall not be reproduced, except in full,
without the written consent of Pace Analytical Services, LLC.



ANALYTICAL RESULTS

Project: CAMP MARINA
 Pace Project No.: 40219782

Sample: 121120006 Lab ID: 40219782006 Collected: 12/11/20 09:23 Received: 12/12/20 12:00 Matrix: Water

Parameters	Results	Units	LOQ	LOD	DF	Prepared	Analyzed	CAS No.	Qual
Methane, Ethane, Ethene GCV									
Analytical Method: EPA 8015B Modified Pace Analytical Services - Green Bay									
Methane	4560	ug/L	140	33.2	50		12/23/20 13:14	74-82-8	
8270 MSSV PAH by HVI									
Analytical Method: EPA 8270 by HVI Preparation Method: EPA 3510 Pace Analytical Services - Green Bay									
Acenaphthene	87.1	ug/L	30.0	6.0	1000	12/17/20 08:36	12/18/20 09:26	83-32-9	
Acenaphthylene	<4.9	ug/L	24.6	4.9	1000	12/17/20 08:36	12/18/20 09:26	208-96-8	
Anthracene	<10.3	ug/L	51.7	10.3	1000	12/17/20 08:36	12/18/20 09:26	120-12-7	
Benzo(a)anthracene	<7.5	ug/L	37.4	7.5	1000	12/17/20 08:36	12/18/20 09:26	56-55-3	
Benzo(a)pyrene	<10.4	ug/L	52.1	10.4	1000	12/17/20 08:36	12/18/20 09:26	50-32-8	
Benzo(b)fluoranthene	<5.7	ug/L	28.4	5.7	1000	12/17/20 08:36	12/18/20 09:26	205-99-2	
Benzo(g,h,i)perylene	<6.7	ug/L	33.6	6.7	1000	12/17/20 08:36	12/18/20 09:26	191-24-2	
Benzo(k)fluoranthene	<7.5	ug/L	37.4	7.5	1000	12/17/20 08:36	12/18/20 09:26	207-08-9	
Chrysene	<12.9	ug/L	64.6	12.9	1000	12/17/20 08:36	12/18/20 09:26	218-01-9	
Dibenz(a,h)anthracene	<9.9	ug/L	49.6	9.9	1000	12/17/20 08:36	12/18/20 09:26	53-70-3	
Fluoranthene	<10.6	ug/L	52.8	10.6	1000	12/17/20 08:36	12/18/20 09:26	206-44-0	
Fluorene	14.1J	ug/L	39.5	7.9	1000	12/17/20 08:36	12/18/20 09:26	86-73-7	
Indeno(1,2,3-cd)pyrene	<17.5	ug/L	87.3	17.5	1000	12/17/20 08:36	12/18/20 09:26	193-39-5	
1-Methylnaphthalene	130	ug/L	29.2	5.8	1000	12/17/20 08:36	12/18/20 09:26	90-12-0	
2-Methylnaphthalene	82.8	ug/L	24.3	4.9	1000	12/17/20 08:36	12/18/20 09:26	91-57-6	
Naphthalene	1030	ug/L	90.7	18.1	1000	12/17/20 08:36	12/18/20 09:26	91-20-3	
Phenanthrene	48.9J	ug/L	68.2	13.7	1000	12/17/20 08:36	12/18/20 09:26	85-01-8	
Pyrene	7.9J	ug/L	37.9	7.6	1000	12/17/20 08:36	12/18/20 09:26	129-00-0	
Surrogates									
2-Fluorobiphenyl (S)	0	%	39-120		1000	12/17/20 08:36	12/18/20 09:26	321-60-8	S4
Terphenyl-d14 (S)	0	%	10-159		1000	12/17/20 08:36	12/18/20 09:26	1718-51-0	S4
8260 MSV UST									
Analytical Method: EPA 8260 Pace Analytical Services - Green Bay									
Benzene	4220	ug/L	50.0	12.3	50		12/15/20 12:53	71-43-2	
Ethylbenzene	309	ug/L	53.1	15.9	50		12/15/20 12:53	100-41-4	
Toluene	19.0J	ug/L	50.0	13.5	50		12/15/20 12:53	108-88-3	
Xylene (Total)	176	ug/L	150	75.0	50		12/15/20 12:53	1330-20-7	
Surrogates									
Dibromofluoromethane (S)	106	%	70-130		50		12/15/20 12:53	1868-53-7	
Toluene-d8 (S)	97	%	70-130		50		12/15/20 12:53	2037-26-5	
4-Bromofluorobenzene (S)	94	%	70-130		50		12/15/20 12:53	460-00-4	
300.0 IC Anions									
Analytical Method: EPA 300.0 Pace Analytical Services - Green Bay									
Sulfate	<2.2	mg/L	10.0	2.2	5		12/22/20 18:03	14808-79-8	D3
353.2 Nitrogen, NO2/NO3 pres.									
Analytical Method: EPA 353.2 Pace Analytical Services - Green Bay									
Nitrogen, NO2 plus NO3	<0.059	mg/L	0.25	0.059	1		12/16/20 12:08		

REPORT OF LABORATORY ANALYSIS

This report shall not be reproduced, except in full,
 without the written consent of Pace Analytical Services, LLC.



ANALYTICAL RESULTS

Project: CAMP MARINA
 Pace Project No.: 40219782

Sample: 121120007 Lab ID: 40219782007 Collected: 12/11/20 09:50 Received: 12/12/20 12:00 Matrix: Water

Parameters	Results	Units	LOQ	LOD	DF	Prepared	Analyzed	CAS No.	Qual
Methane, Ethane, Ethene GCV									
Analytical Method: EPA 8015B Modified Pace Analytical Services - Green Bay									
Methane	13.4	ug/L	2.8	0.66	1		12/23/20 10:31	74-82-8	
8270 MSSV PAH by HVI									
Analytical Method: EPA 8270 by HVI Preparation Method: EPA 3510 Pace Analytical Services - Green Bay									
Acenaphthene	0.013J	ug/L	0.030	0.0061	1	12/17/20 08:36	12/18/20 09:44	83-32-9	
Acenaphthylene	<0.0050	ug/L	0.025	0.0050	1	12/17/20 08:36	12/18/20 09:44	208-96-8	
Anthracene	<0.010	ug/L	0.052	0.010	1	12/17/20 08:36	12/18/20 09:44	120-12-7	
Benzo(a)anthracene	<0.0076	ug/L	0.038	0.0076	1	12/17/20 08:36	12/18/20 09:44	56-55-3	
Benzo(a)pyrene	<0.011	ug/L	0.053	0.011	1	12/17/20 08:36	12/18/20 09:44	50-32-8	
Benzo(b)fluoranthene	<0.0057	ug/L	0.029	0.0057	1	12/17/20 08:36	12/18/20 09:44	205-99-2	
Benzo(g,h,i)perylene	<0.0068	ug/L	0.034	0.0068	1	12/17/20 08:36	12/18/20 09:44	191-24-2	
Benzo(k)fluoranthene	<0.0076	ug/L	0.038	0.0076	1	12/17/20 08:36	12/18/20 09:44	207-08-9	
Chrysene	<0.013	ug/L	0.065	0.013	1	12/17/20 08:36	12/18/20 09:44	218-01-9	
Dibenz(a,h)anthracene	<0.010	ug/L	0.050	0.010	1	12/17/20 08:36	12/18/20 09:44	53-70-3	
Fluoranthene	<0.011	ug/L	0.053	0.011	1	12/17/20 08:36	12/18/20 09:44	206-44-0	
Fluorene	<0.0080	ug/L	0.040	0.0080	1	12/17/20 08:36	12/18/20 09:44	86-73-7	
Indeno(1,2,3-cd)pyrene	<0.018	ug/L	0.088	0.018	1	12/17/20 08:36	12/18/20 09:44	193-39-5	
1-Methylnaphthalene	0.023J	ug/L	0.030	0.0059	1	12/17/20 08:36	12/18/20 09:44	90-12-0	
2-Methylnaphthalene	0.016J	ug/L	0.024	0.0049	1	12/17/20 08:36	12/18/20 09:44	91-57-6	
Naphthalene	0.14	ug/L	0.092	0.018	1	12/17/20 08:36	12/18/20 09:44	91-20-3	
Phenanthrene	<0.014	ug/L	0.069	0.014	1	12/17/20 08:36	12/18/20 09:44	85-01-8	
Pyrene	<0.0076	ug/L	0.038	0.0076	1	12/17/20 08:36	12/18/20 09:44	129-00-0	
Surrogates									
2-Fluorobiphenyl (S)	54	%	39-120		1	12/17/20 08:36	12/18/20 09:44	321-60-8	
Terphenyl-d14 (S)	84	%	10-159		1	12/17/20 08:36	12/18/20 09:44	1718-51-0	
8260 MSV UST									
Analytical Method: EPA 8260 Pace Analytical Services - Green Bay									
Benzene	<0.25	ug/L	1.0	0.25	1		12/15/20 14:30	71-43-2	
Ethylbenzene	<0.32	ug/L	1.1	0.32	1		12/15/20 14:30	100-41-4	
Toluene	<0.27	ug/L	1.0	0.27	1		12/15/20 14:30	108-88-3	
Xylene (Total)	<1.5	ug/L	3.0	1.5	1		12/15/20 14:30	1330-20-7	
Surrogates									
Dibromofluoromethane (S)	98	%	70-130		1		12/15/20 14:30	1868-53-7	
Toluene-d8 (S)	100	%	70-130		1		12/15/20 14:30	2037-26-5	
4-Bromofluorobenzene (S)	98	%	70-130		1		12/15/20 14:30	460-00-4	
300.0 IC Anions									
Analytical Method: EPA 300.0 Pace Analytical Services - Green Bay									
Sulfate	96.0	mg/L	10.0	2.2	5		12/23/20 14:29	14808-79-8	
353.2 Nitrogen, NO2/NO3 pres.									
Analytical Method: EPA 353.2 Pace Analytical Services - Green Bay									
Nitrogen, NO2 plus NO3	0.13J	mg/L	0.25	0.059	1		12/16/20 12:09		

REPORT OF LABORATORY ANALYSIS

This report shall not be reproduced, except in full,
 without the written consent of Pace Analytical Services, LLC.



ANALYTICAL RESULTS

Project: CAMP MARINA
 Pace Project No.: 40219782

Sample: 121120008 Lab ID: 40219782008 Collected: 12/11/20 10:21 Received: 12/12/20 12:00 Matrix: Water

Parameters	Results	Units	LOQ	LOD	DF	Prepared	Analyzed	CAS No.	Qual
Methane, Ethane, Ethene GCV									
Analytical Method: EPA 8015B Modified Pace Analytical Services - Green Bay									
Methane	2.1J	ug/L	2.8	0.66	1		12/23/20 10:38	74-82-8	
8270 MSSV PAH by HVI									
Analytical Method: EPA 8270 by HVI Preparation Method: EPA 3510 Pace Analytical Services - Green Bay									
Acenaphthene	<0.0059	ug/L	0.029	0.0059	1	12/17/20 08:36	12/18/20 10:03	83-32-9	
Acenaphthylene	<0.0048	ug/L	0.024	0.0048	1	12/17/20 08:36	12/18/20 10:03	208-96-8	
Anthracene	<0.010	ug/L	0.051	0.010	1	12/17/20 08:36	12/18/20 10:03	120-12-7	
Benzo(a)anthracene	<0.0073	ug/L	0.037	0.0073	1	12/17/20 08:36	12/18/20 10:03	56-55-3	
Benzo(a)pyrene	<0.010	ug/L	0.051	0.010	1	12/17/20 08:36	12/18/20 10:03	50-32-8	
Benzo(b)fluoranthene	<0.0056	ug/L	0.028	0.0056	1	12/17/20 08:36	12/18/20 10:03	205-99-2	
Benzo(g,h,i)perylene	<0.0066	ug/L	0.033	0.0066	1	12/17/20 08:36	12/18/20 10:03	191-24-2	
Benzo(k)fluoranthene	<0.0073	ug/L	0.037	0.0073	1	12/17/20 08:36	12/18/20 10:03	207-08-9	
Chrysene	<0.013	ug/L	0.063	0.013	1	12/17/20 08:36	12/18/20 10:03	218-01-9	
Dibenz(a,h)anthracene	<0.0097	ug/L	0.049	0.0097	1	12/17/20 08:36	12/18/20 10:03	53-70-3	
Fluoranthene	<0.010	ug/L	0.052	0.010	1	12/17/20 08:36	12/18/20 10:03	206-44-0	
Fluorene	<0.0077	ug/L	0.039	0.0077	1	12/17/20 08:36	12/18/20 10:03	86-73-7	
Indeno(1,2,3-cd)pyrene	<0.017	ug/L	0.086	0.017	1	12/17/20 08:36	12/18/20 10:03	193-39-5	
1-Methylnaphthalene	0.0078J	ug/L	0.029	0.0057	1	12/17/20 08:36	12/18/20 10:03	90-12-0	
2-Methylnaphthalene	<0.0048	ug/L	0.024	0.0048	1	12/17/20 08:36	12/18/20 10:03	91-57-6	
Naphthalene	0.034J	ug/L	0.089	0.018	1	12/17/20 08:36	12/18/20 10:03	91-20-3	
Phenanthrene	<0.013	ug/L	0.067	0.013	1	12/17/20 08:36	12/18/20 10:03	85-01-8	
Pyrene	0.0079J	ug/L	0.037	0.0074	1	12/17/20 08:36	12/18/20 10:03	129-00-0	
Surrogates									
2-Fluorobiphenyl (S)	45	%	39-120		1	12/17/20 08:36	12/18/20 10:03	321-60-8	
Terphenyl-d14 (S)	82	%	10-159		1	12/17/20 08:36	12/18/20 10:03	1718-51-0	
8260 MSV UST									
Analytical Method: EPA 8260 Pace Analytical Services - Green Bay									
Benzene	<0.25	ug/L	1.0	0.25	1		12/15/20 14:49	71-43-2	
Ethylbenzene	<0.32	ug/L	1.1	0.32	1		12/15/20 14:49	100-41-4	
Toluene	<0.27	ug/L	1.0	0.27	1		12/15/20 14:49	108-88-3	
Xylene (Total)	<1.5	ug/L	3.0	1.5	1		12/15/20 14:49	1330-20-7	
Surrogates									
Dibromofluoromethane (S)	102	%	70-130		1		12/15/20 14:49	1868-53-7	
Toluene-d8 (S)	99	%	70-130		1		12/15/20 14:49	2037-26-5	
4-Bromofluorobenzene (S)	98	%	70-130		1		12/15/20 14:49	460-00-4	
300.0 IC Anions									
Analytical Method: EPA 300.0 Pace Analytical Services - Green Bay									
Sulfate	1.8J	mg/L	2.0	0.44	1		12/22/20 18:32	14808-79-8	
353.2 Nitrogen, NO2/NO3 pres.									
Analytical Method: EPA 353.2 Pace Analytical Services - Green Bay									
Nitrogen, NO2 plus NO3	0.083J	mg/L	0.25	0.059	1		12/16/20 12:12		

REPORT OF LABORATORY ANALYSIS

This report shall not be reproduced, except in full,
 without the written consent of Pace Analytical Services, LLC.

ANALYTICAL RESULTS

Project: CAMP MARINA
Pace Project No.: 40219782

Sample: 121120009 Lab ID: 40219782009 Collected: 12/11/20 10:55 Received: 12/12/20 12:00 Matrix: Water

Parameters	Results	Units	LOQ	LOD	DF	Prepared	Analyzed	CAS No.	Qual
Methane, Ethane, Ethene GCV									
Analytical Method: EPA 8015B Modified Pace Analytical Services - Green Bay									
Methane	41.0	ug/L	2.8	0.66	1		12/23/20 10:45	74-82-8	
8270 MSSV PAH by HVI									
Analytical Method: EPA 8270 by HVI Preparation Method: EPA 3510 Pace Analytical Services - Green Bay									
Acenaphthene	11.9J	ug/L	16.3	3.3	500	12/17/20 08:36	12/18/20 10:21	83-32-9	
Acenaphthylene	115	ug/L	13.4	2.7	500	12/17/20 08:36	12/18/20 10:21	208-96-8	
Anthracene	<5.6	ug/L	28.1	5.6	500	12/17/20 08:36	12/18/20 10:21	120-12-7	
Benzo(a)anthracene	<4.1	ug/L	20.3	4.1	500	12/17/20 08:36	12/18/20 10:21	56-55-3	
Benzo(a)pyrene	<5.7	ug/L	28.3	5.7	500	12/17/20 08:36	12/18/20 10:21	50-32-8	
Benzo(b)fluoranthene	<3.1	ug/L	15.4	3.1	500	12/17/20 08:36	12/18/20 10:21	205-99-2	
Benzo(g,h,i)perylene	<3.6	ug/L	18.2	3.6	500	12/17/20 08:36	12/18/20 10:21	191-24-2	
Benzo(k)fluoranthene	<4.1	ug/L	20.3	4.1	500	12/17/20 08:36	12/18/20 10:21	207-08-9	
Chrysene	<7.0	ug/L	35.1	7.0	500	12/17/20 08:36	12/18/20 10:21	218-01-9	
Dibenz(a,h)anthracene	<5.4	ug/L	26.9	5.4	500	12/17/20 08:36	12/18/20 10:21	53-70-3	
Fluoranthene	<5.7	ug/L	28.7	5.7	500	12/17/20 08:36	12/18/20 10:21	206-44-0	
Fluorene	14.7J	ug/L	21.4	4.3	500	12/17/20 08:36	12/18/20 10:21	86-73-7	
Indeno(1,2,3-cd)pyrene	<9.5	ug/L	47.4	9.5	500	12/17/20 08:36	12/18/20 10:21	193-39-5	
1-Methylnaphthalene	191	ug/L	15.9	3.2	500	12/17/20 08:36	12/18/20 10:21	90-12-0	
2-Methylnaphthalene	55.3	ug/L	13.2	2.6	500	12/17/20 08:36	12/18/20 10:21	91-57-6	
Naphthalene	701	ug/L	49.3	9.9	500	12/17/20 08:36	12/18/20 10:21	91-20-3	
Phenanthrene	17.8J	ug/L	37.1	7.4	500	12/17/20 08:36	12/18/20 10:21	85-01-8	
Pyrene	<4.1	ug/L	20.6	4.1	500	12/17/20 08:36	12/18/20 10:21	129-00-0	
Surrogates									
2-Fluorobiphenyl (S)	0	%	39-120		500	12/17/20 08:36	12/18/20 10:21	321-60-8	S4
Terphenyl-d14 (S)	0	%	10-159		500	12/17/20 08:36	12/18/20 10:21	1718-51-0	S4
8260 MSV UST									
Analytical Method: EPA 8260 Pace Analytical Services - Green Bay									
Benzene	2540	ug/L	40.0	9.9	40		12/15/20 13:12	71-43-2	
Ethylbenzene	390	ug/L	42.5	12.7	40		12/15/20 13:12	100-41-4	
Toluene	979	ug/L	40.0	10.8	40		12/15/20 13:12	108-88-3	
Xylene (Total)	438	ug/L	120	60.0	40		12/15/20 13:12	1330-20-7	
Surrogates									
Dibromofluoromethane (S)	99	%	70-130		40		12/15/20 13:12	1868-53-7	
Toluene-d8 (S)	96	%	70-130		40		12/15/20 13:12	2037-26-5	
4-Bromofluorobenzene (S)	97	%	70-130		40		12/15/20 13:12	460-00-4	
300.0 IC Anions									
Analytical Method: EPA 300.0 Pace Analytical Services - Green Bay									
Sulfate	32.4	mg/L	10.0	2.2	5		12/22/20 14:23	14808-79-8	
353.2 Nitrogen, NO2/NO3 pres.									
Analytical Method: EPA 353.2 Pace Analytical Services - Green Bay									
Nitrogen, NO2 plus NO3	<0.059	mg/L	0.25	0.059	1		12/16/20 12:12		

REPORT OF LABORATORY ANALYSIS

This report shall not be reproduced, except in full,
without the written consent of Pace Analytical Services, LLC.



ANALYTICAL RESULTS

Project: CAMP MARINA
 Pace Project No.: 40219782

Sample: 121120010 **Lab ID: 40219782010** Collected: 12/11/20 11:30 Received: 12/12/20 12:00 Matrix: Water

Parameters	Results	Units	LOQ	LOD	DF	Prepared	Analyzed	CAS No.	Qual
Methane, Ethane, Ethene GCV									
Analytical Method: EPA 8015B Modified Pace Analytical Services - Green Bay									
Methane	1.3J	ug/L	2.8	0.66	1		12/23/20 10:52	74-82-8	
8270 MSSV PAH by HVI									
Analytical Method: EPA 8270 by HVI Preparation Method: EPA 3510 Pace Analytical Services - Green Bay									
Acenaphthene	<0.0079	ug/L	0.039	0.0079	1	12/17/20 08:36	12/18/20 10:40	83-32-9	
Acenaphthylene	0.016J	ug/L	0.032	0.0065	1	12/17/20 08:36	12/18/20 10:40	208-96-8	
Anthracene	<0.014	ug/L	0.068	0.014	1	12/17/20 08:36	12/18/20 10:40	120-12-7	
Benzo(a)anthracene	<0.0098	ug/L	0.049	0.0098	1	12/17/20 08:36	12/18/20 10:40	56-55-3	
Benzo(a)pyrene	<0.014	ug/L	0.068	0.014	1	12/17/20 08:36	12/18/20 10:40	50-32-8	
Benzo(b)fluoranthene	<0.0075	ug/L	0.037	0.0075	1	12/17/20 08:36	12/18/20 10:40	205-99-2	
Benzo(g,h,i)perylene	<0.0088	ug/L	0.044	0.0088	1	12/17/20 08:36	12/18/20 10:40	191-24-2	
Benzo(k)fluoranthene	<0.0098	ug/L	0.049	0.0098	1	12/17/20 08:36	12/18/20 10:40	207-08-9	
Chrysene	<0.017	ug/L	0.085	0.017	1	12/17/20 08:36	12/18/20 10:40	218-01-9	
Dibenz(a,h)anthracene	<0.013	ug/L	0.065	0.013	1	12/17/20 08:36	12/18/20 10:40	53-70-3	
Fluoranthene	<0.014	ug/L	0.069	0.014	1	12/17/20 08:36	12/18/20 10:40	206-44-0	
Fluorene	<0.010	ug/L	0.052	0.010	1	12/17/20 08:36	12/18/20 10:40	86-73-7	
Indeno(1,2,3-cd)pyrene	<0.023	ug/L	0.11	0.023	1	12/17/20 08:36	12/18/20 10:40	193-39-5	
1-Methylnaphthalene	0.031J	ug/L	0.038	0.0077	1	12/17/20 08:36	12/18/20 10:40	90-12-0	
2-Methylnaphthalene	0.0077J	ug/L	0.032	0.0064	1	12/17/20 08:36	12/18/20 10:40	91-57-6	
Naphthalene	0.12	ug/L	0.12	0.024	1	12/17/20 08:36	12/18/20 10:40	91-20-3	
Phenanthrene	<0.018	ug/L	0.090	0.018	1	12/17/20 08:36	12/18/20 10:40	85-01-8	
Pyrene	<0.0099	ug/L	0.050	0.0099	1	12/17/20 08:36	12/18/20 10:40	129-00-0	
Surrogates									
2-Fluorobiphenyl (S)	56	%	39-120		1	12/17/20 08:36	12/18/20 10:40	321-60-8	
Terphenyl-d14 (S)	99	%	10-159		1	12/17/20 08:36	12/18/20 10:40	1718-51-0	
8260 MSV UST									
Analytical Method: EPA 8260 Pace Analytical Services - Green Bay									
Benzene	<0.25	ug/L	1.0	0.25	1		12/15/20 15:09	71-43-2	
Ethylbenzene	<0.32	ug/L	1.1	0.32	1		12/15/20 15:09	100-41-4	
Toluene	<0.27	ug/L	1.0	0.27	1		12/15/20 15:09	108-88-3	
Xylene (Total)	<1.5	ug/L	3.0	1.5	1		12/15/20 15:09	1330-20-7	
Surrogates									
Dibromofluoromethane (S)	99	%	70-130		1		12/15/20 15:09	1868-53-7	
Toluene-d8 (S)	99	%	70-130		1		12/15/20 15:09	2037-26-5	
4-Bromofluorobenzene (S)	96	%	70-130		1		12/15/20 15:09	460-00-4	
300.0 IC Anions									
Analytical Method: EPA 300.0 Pace Analytical Services - Green Bay									
Sulfate	<0.44	mg/L	2.0	0.44	1		12/22/20 15:08	14808-79-8	
353.2 Nitrogen, NO2/NO3 pres.									
Analytical Method: EPA 353.2 Pace Analytical Services - Green Bay									
Nitrogen, NO2 plus NO3	<0.059	mg/L	0.25	0.059	1		12/16/20 12:14		

REPORT OF LABORATORY ANALYSIS

This report shall not be reproduced, except in full,
without the written consent of Pace Analytical Services, LLC.

ANALYTICAL RESULTS

Project: CAMP MARINA
Pace Project No.: 40219782

Sample: 121120011 Lab ID: 40219782011 Collected: 12/11/20 00:00 Received: 12/12/20 12:00 Matrix: Water

Parameters	Results	Units	LOQ	LOD	DF	Prepared	Analyzed	CAS No.	Qual
8260 MSV UST	Analytical Method: EPA 8260 Pace Analytical Services - Green Bay								
Benzene	<0.25	ug/L	1.0	0.25	1		12/15/20 08:40	71-43-2	
Ethylbenzene	<0.32	ug/L	1.1	0.32	1		12/15/20 08:40	100-41-4	
Toluene	<0.27	ug/L	1.0	0.27	1		12/15/20 08:40	108-88-3	
Xylene (Total)	<1.5	ug/L	3.0	1.5	1		12/15/20 08:40	1330-20-7	
Surrogates									
Dibromofluoromethane (S)	108	%	70-130		1		12/15/20 08:40	1868-53-7	
Toluene-d8 (S)	100	%	70-130		1		12/15/20 08:40	2037-26-5	
4-Bromofluorobenzene (S)	95	%	70-130		1		12/15/20 08:40	460-00-4	

REPORT OF LABORATORY ANALYSIS

This report shall not be reproduced, except in full,
without the written consent of Pace Analytical Services, LLC.



QUALITY CONTROL DATA

Project: CAMP MARINA
 Pace Project No.: 40219782

QC Batch: 374510 Analysis Method: EPA 8015B Modified
 QC Batch Method: EPA 8015B Modified Analysis Description: Methane, Ethane, Ethene GCV
 Laboratory: Pace Analytical Services - Green Bay
 Associated Lab Samples: 40219782001, 40219782002, 40219782003, 40219782004, 40219782005, 40219782006, 40219782007,
 40219782008, 40219782009, 40219782010

METHOD BLANK: 2164435 Matrix: Water
 Associated Lab Samples: 40219782001, 40219782002, 40219782003, 40219782004, 40219782005, 40219782006, 40219782007,
 40219782008, 40219782009, 40219782010

Parameter	Units	Blank Result	Reporting Limit	Analyzed	Qualifiers
Methane	ug/L	<0.66	2.8	12/23/20 09:08	

LABORATORY CONTROL SAMPLE & LCSD: 2164436 2164437

Parameter	Units	Spike Conc.	LCS Result	LCSD Result	LCS % Rec	LCSD % Rec	% Rec Limits	RPD	Max RPD	Qualifiers
Methane	ug/L	28.6	29.6	30.4	104	106	79-120	3	20	

MATRIX SPIKE & MATRIX SPIKE DUPLICATE: 2164438 2164439

Parameter	Units	40219782002 Result	MS Spike Conc.	MSD Spike Conc.	MS Result	MSD Result	MS % Rec	MSD % Rec	% Rec Limits	RPD	Max RPD	Qual
Methane	ug/L	5.6	28.6	28.6	35.8	36.4	106	108	10-200	2	20	

Results presented on this page are in the units indicated by the "Units" column except where an alternate unit is presented to the right of the result.

REPORT OF LABORATORY ANALYSIS

This report shall not be reproduced, except in full,
 without the written consent of Pace Analytical Services, LLC.

QUALITY CONTROL DATA

Project: CAMP MARINA
Pace Project No.: 40219782

QC Batch: 373675 Analysis Method: EPA 8260
QC Batch Method: EPA 8260 Analysis Description: 8260 MSV UST-WATER
Laboratory: Pace Analytical Services - Green Bay
Associated Lab Samples: 40219782001, 40219782002, 40219782003, 40219782004, 40219782005, 40219782006, 40219782007, 40219782008, 40219782009, 40219782010, 40219782011

METHOD BLANK: 2159830 Matrix: Water
Associated Lab Samples: 40219782001, 40219782002, 40219782003, 40219782004, 40219782005, 40219782006, 40219782007, 40219782008, 40219782009, 40219782010, 40219782011

Parameter	Units	Blank Result	Reporting Limit	Analyzed	Qualifiers
Benzene	ug/L	<0.25	1.0	12/15/20 06:44	
Ethylbenzene	ug/L	<0.32	1.1	12/15/20 06:44	
Toluene	ug/L	<0.27	1.0	12/15/20 06:44	
Xylene (Total)	ug/L	<1.5	3.0	12/15/20 06:44	
4-Bromofluorobenzene (S)	%	95	70-130	12/15/20 06:44	
Dibromofluoromethane (S)	%	104	70-130	12/15/20 06:44	
Toluene-d8 (S)	%	98	70-130	12/15/20 06:44	

LABORATORY CONTROL SAMPLE: 2159831

Parameter	Units	Spike Conc.	LCS Result	LCS % Rec	% Rec Limits	Qualifiers
Benzene	ug/L	50	51.4	103	70-130	
Ethylbenzene	ug/L	50	51.7	103	80-120	
Toluene	ug/L	50	51.9	104	80-120	
Xylene (Total)	ug/L	150	156	104	70-130	
4-Bromofluorobenzene (S)	%			97	70-130	
Dibromofluoromethane (S)	%			103	70-130	
Toluene-d8 (S)	%			97	70-130	

MATRIX SPIKE & MATRIX SPIKE DUPLICATE: 2159832 2159833

Parameter	Units	MS		MSD		MS % Rec	MSD % Rec	% Rec Limits	Max RPD	Qual
		40219782002 Result	Spike Conc.	Spike Conc.	MS Result					
Benzene	ug/L	<0.25	50	50	56.2	55.3	112	111	70-136	2 20
Ethylbenzene	ug/L	<0.32	50	50	51.9	53.2	104	106	80-120	2 20
Toluene	ug/L	<0.27	50	50	53.7	55.1	107	110	80-120	3 20
Xylene (Total)	ug/L	<1.5	150	150	160	162	107	108	70-130	1 20
4-Bromofluorobenzene (S)	%						100	102	70-130	
Dibromofluoromethane (S)	%						103	101	70-130	
Toluene-d8 (S)	%						100	100	70-130	

Results presented on this page are in the units indicated by the "Units" column except where an alternate unit is presented to the right of the result.

REPORT OF LABORATORY ANALYSIS

This report shall not be reproduced, except in full, without the written consent of Pace Analytical Services, LLC.

QUALITY CONTROL DATA

Project: CAMP MARINA
Pace Project No.: 40219782

QC Batch: 373764 Analysis Method: EPA 8270 by HVI
QC Batch Method: EPA 3510 Analysis Description: 8270 Water PAH by HVI
Laboratory: Pace Analytical Services - Green Bay
Associated Lab Samples: 40219782001, 40219782002, 40219782003, 40219782004

METHOD BLANK: 2160132 Matrix: Water
Associated Lab Samples: 40219782001, 40219782002, 40219782003, 40219782004

Parameter	Units	Blank Result	Reporting Limit	Analyzed	Qualifiers
1-Methylnaphthalene	ug/L	<0.0059	0.030	12/16/20 07:50	
2-Methylnaphthalene	ug/L	<0.0049	0.024	12/16/20 07:50	
Acenaphthene	ug/L	<0.0061	0.030	12/16/20 07:50	
Acenaphthylene	ug/L	<0.0050	0.025	12/16/20 07:50	
Anthracene	ug/L	<0.010	0.052	12/16/20 07:50	
Benzo(a)anthracene	ug/L	<0.0076	0.038	12/16/20 07:50	
Benzo(a)pyrene	ug/L	<0.011	0.053	12/16/20 07:50	
Benzo(b)fluoranthene	ug/L	<0.0057	0.029	12/16/20 07:50	
Benzo(g,h,i)perylene	ug/L	<0.0068	0.034	12/16/20 07:50	
Benzo(k)fluoranthene	ug/L	<0.0076	0.038	12/16/20 07:50	
Chrysene	ug/L	<0.013	0.065	12/16/20 07:50	
Dibenz(a,h)anthracene	ug/L	<0.010	0.050	12/16/20 07:50	
Fluoranthene	ug/L	<0.011	0.053	12/16/20 07:50	
Fluorene	ug/L	<0.0080	0.040	12/16/20 07:50	
Indeno(1,2,3-cd)pyrene	ug/L	<0.018	0.088	12/16/20 07:50	
Naphthalene	ug/L	<0.018	0.092	12/16/20 07:50	
Phenanthrene	ug/L	<0.014	0.069	12/16/20 07:50	
Pyrene	ug/L	<0.0076	0.038	12/16/20 07:50	
2-Fluorobiphenyl (S)	%	62	39-120	12/16/20 07:50	
Terphenyl-d14 (S)	%	98	10-159	12/16/20 07:50	

LABORATORY CONTROL SAMPLE: 2160133

Parameter	Units	Spike Conc.	LCS Result	LCS % Rec	% Rec Limits	Qualifiers
1-Methylnaphthalene	ug/L	2	1.2	62	37-120	
2-Methylnaphthalene	ug/L	2	1.2	59	38-120	
Acenaphthene	ug/L	2	1.3	66	49-120	
Acenaphthylene	ug/L	2	1.4	68	43-85	
Anthracene	ug/L	2	1.7	86	57-110	
Benzo(a)anthracene	ug/L	2	1.7	85	47-118	
Benzo(a)pyrene	ug/L	2	1.6	81	70-120	
Benzo(b)fluoranthene	ug/L	2	1.6	80	54-97	
Benzo(g,h,i)perylene	ug/L	2	1.1	57	26-74	
Benzo(k)fluoranthene	ug/L	2	1.8	92	73-126	
Chrysene	ug/L	2	1.8	91	75-151	
Dibenz(a,h)anthracene	ug/L	2	1.2	59	13-72	
Fluoranthene	ug/L	2	1.7	83	63-120	
Fluorene	ug/L	2	1.3	67	53-120	
Indeno(1,2,3-cd)pyrene	ug/L	2	1.5	76	51-101	

Results presented on this page are in the units indicated by the "Units" column except where an alternate unit is presented to the right of the result.

REPORT OF LABORATORY ANALYSIS

This report shall not be reproduced, except in full,
without the written consent of Pace Analytical Services, LLC.

QUALITY CONTROL DATA

Project: CAMP MARINA
Pace Project No.: 40219782

LABORATORY CONTROL SAMPLE: 2160133

Parameter	Units	Spike Conc.	LCS Result	LCS % Rec	% Rec Limits	Qualifiers
Naphthalene	ug/L	2	1.3	63	41-120	
Phenanthrene	ug/L	2	1.4	72	47-100	
Pyrene	ug/L	2	1.9	93	70-128	
2-Fluorobiphenyl (S)	%			66	39-120	
Terphenyl-d14 (S)	%			102	10-159	

MATRIX SPIKE & MATRIX SPIKE DUPLICATE: 2160134 2160135

Parameter	Units	40219782002		MSD		MS		MSD		% Rec Limits	RPD	Max RPD	Qual
		Result	Spike Conc.	Spike Conc.	Result	Result	% Rec	% Rec					
1-Methylnaphthalene	ug/L	<0.0059	2.1	2.2	1.0	1.1	50	51	16-120	9	28		
2-Methylnaphthalene	ug/L	<0.0049	2.1	2.2	1.0	1.1	48	48	29-120	6	31		
Acenaphthene	ug/L	<0.0061	2.1	2.2	1.1	1.2	54	56	33-120	9	30		
Acenaphthylene	ug/L	<0.0050	2.1	2.2	1.2	1.2	55	56	21-85	7	26		
Anthracene	ug/L	<0.010	2.1	2.2	1.5	1.6	74	73	16-114	6	36		
Benzo(a)anthracene	ug/L	<0.0076	2.1	2.2	1.4	1.5	65	68	10-118	11	35		
Benzo(a)pyrene	ug/L	<0.011	2.1	2.2	1.3	1.4	60	65	10-120	14	37		
Benzo(b)fluoranthene	ug/L	<0.0057	2.1	2.2	1.3	1.5	61	68	10-97	18	36		
Benzo(g,h,i)perylene	ug/L	<0.0068	2.1	2.2	0.54	0.64	26	29	10-74	17	45		
Benzo(k)fluoranthene	ug/L	<0.0076	2.1	2.2	1.4	1.6	67	70	10-126	12	41		
Chrysene	ug/L	<0.013	2.1	2.2	1.7	1.8	79	80	10-161	8	30		
Dibenz(a,h)anthracene	ug/L	<0.010	2.1	2.2	0.54	0.62	26	28	10-72	13	50		
Fluoranthene	ug/L	<0.011	2.1	2.2	1.5	1.6	70	71	35-120	8	33		
Fluorene	ug/L	<0.0080	2.1	2.2	1.2	1.2	59	56	17-120	0	33		
Indeno(1,2,3-cd)pyrene	ug/L	<0.018	2.1	2.2	0.86	1.1	41	48	10-101	21	41		
Naphthalene	ug/L	<0.018	2.1	2.2	1.1	1.2	52	53	24-120	8	30		
Phenanthrene	ug/L	<0.014	2.1	2.2	1.3	1.4	60	62	15-100	9	30		
Pyrene	ug/L	<0.0076	2.1	2.2	1.7	1.8	80	81	14-137	8	31		
2-Fluorobiphenyl (S)	%						56	57	39-120				
Terphenyl-d14 (S)	%						85	88	10-159				

Results presented on this page are in the units indicated by the "Units" column except where an alternate unit is presented to the right of the result.

REPORT OF LABORATORY ANALYSIS

This report shall not be reproduced, except in full,
without the written consent of Pace Analytical Services, LLC.



QUALITY CONTROL DATA

Project: CAMP MARINA
 Pace Project No.: 40219782

QC Batch: 374054 Analysis Method: EPA 8270 by HVI
 QC Batch Method: EPA 3510 Analysis Description: 8270 Water PAH by HVI
 Laboratory: Pace Analytical Services - Green Bay
 Associated Lab Samples: 40219782005, 40219782006, 40219782007, 40219782008, 40219782009, 40219782010

METHOD BLANK: 2161664 Matrix: Water
 Associated Lab Samples: 40219782005, 40219782006, 40219782007, 40219782008, 40219782009, 40219782010

Parameter	Units	Blank Result	Reporting Limit	Analyzed	Qualifiers
1-Methylnaphthalene	ug/L	<0.0059	0.030	12/18/20 08:11	
2-Methylnaphthalene	ug/L	<0.0049	0.024	12/18/20 08:11	
Acenaphthene	ug/L	<0.0061	0.030	12/18/20 08:11	
Acenaphthylene	ug/L	<0.0050	0.025	12/18/20 08:11	
Anthracene	ug/L	<0.010	0.052	12/18/20 08:11	
Benzo(a)anthracene	ug/L	<0.0076	0.038	12/18/20 08:11	
Benzo(a)pyrene	ug/L	<0.011	0.053	12/18/20 08:11	
Benzo(b)fluoranthene	ug/L	<0.0057	0.029	12/18/20 08:11	
Benzo(g,h,i)perylene	ug/L	<0.0068	0.034	12/18/20 08:11	
Benzo(k)fluoranthene	ug/L	<0.0076	0.038	12/18/20 08:11	
Chrysene	ug/L	<0.013	0.065	12/18/20 08:11	
Dibenz(a,h)anthracene	ug/L	<0.010	0.050	12/18/20 08:11	
Fluoranthene	ug/L	<0.011	0.053	12/18/20 08:11	
Fluorene	ug/L	<0.0080	0.040	12/18/20 08:11	
Indeno(1,2,3-cd)pyrene	ug/L	<0.018	0.088	12/18/20 08:11	
Naphthalene	ug/L	<0.018	0.092	12/18/20 08:11	
Phenanthrene	ug/L	<0.014	0.069	12/18/20 08:11	
Pyrene	ug/L	<0.0076	0.038	12/18/20 08:11	
2-Fluorobiphenyl (S)	%	55	39-120	12/18/20 08:11	
Terphenyl-d14 (S)	%	101	10-159	12/18/20 08:11	

LABORATORY CONTROL SAMPLE & LCSD: 2161665

2161666

Parameter	Units	Spike Conc.	LCS Result	LCSD Result	% Rec	LCSD % Rec	% Rec Limits	RPD	Max RPD	Qualifiers
1-Methylnaphthalene	ug/L	2	1.1	1.0	57	51	37-120	10	25	
2-Methylnaphthalene	ug/L	2	1.0	0.91	51	46	38-120	12	25	
Acenaphthene	ug/L	2	1.2	1.1	62	56	49-120	9	24	
Acenaphthylene	ug/L	2	1.2	1.1	62	55	43-85	12	26	
Anthracene	ug/L	2	1.5	1.5	76	73	57-110	3	28	
Benzo(a)anthracene	ug/L	2	1.5	1.2	73	62	47-118	16	27	
Benzo(a)pyrene	ug/L	2	1.6	1.4	80	71	70-120	12	20	
Benzo(b)fluoranthene	ug/L	2	1.6	1.4	80	71	54-97	12	21	
Benzo(g,h,i)perylene	ug/L	2	0.86	0.65	43	33	26-74	27	42	
Benzo(k)fluoranthene	ug/L	2	1.9	1.8	93	88	73-126	6	22	
Chrysene	ug/L	2	2.0	1.9	100	93	75-151	7	20	
Dibenz(a,h)anthracene	ug/L	2	0.75	0.57	37	28	13-72	27	50	
Fluoranthene	ug/L	2	1.5	1.4	76	69	63-120	9	20	
Fluorene	ug/L	2	1.2	1.1	59	57	53-120	2	26	
Indeno(1,2,3-cd)pyrene	ug/L	2	1.4	1.2	71	58	51-101	20	27	

Results presented on this page are in the units indicated by the "Units" column except where an alternate unit is presented to the right of the result.

REPORT OF LABORATORY ANALYSIS

This report shall not be reproduced, except in full,
 without the written consent of Pace Analytical Services, LLC.

QUALITY CONTROL DATA

Project: CAMP MARINA
Pace Project No.: 40219782

Parameter	Units	2161665		2161666		% Rec	% Rec	% Rec Limits	RPD	Max RPD	Qualifiers
		Spike Conc.	LCS Result	LCSD Result	LCS % Rec						
Naphthalene	ug/L	2	1.2	1.1	58	53	41-120	9	24		
Phenanthrene	ug/L	2	1.3	1.1	64	57	47-100	12	22		
Pyrene	ug/L	2	1.8	1.6	90	82	70-128	9	20		
2-Fluorobiphenyl (S)	%				60	53	39-120				
Terphenyl-d14 (S)	%				101	88	10-159				

Results presented on this page are in the units indicated by the "Units" column except where an alternate unit is presented to the right of the result.

REPORT OF LABORATORY ANALYSIS

This report shall not be reproduced, except in full,
without the written consent of Pace Analytical Services, LLC.

QUALITY CONTROL DATA

Project: CAMP MARINA
Pace Project No.: 40219782

QC Batch:	374356	Analysis Method:	EPA 300.0
QC Batch Method:	EPA 300.0	Analysis Description:	300.0 IC Anions
		Laboratory:	Pace Analytical Services - Green Bay
Associated Lab Samples:	40219782001, 40219782002, 40219782003, 40219782004, 40219782005, 40219782006, 40219782007, 40219782008		

METHOD BLANK: 2163686 Matrix: Water
Associated Lab Samples: 40219782001, 40219782002, 40219782003, 40219782004, 40219782005, 40219782006, 40219782007, 40219782008

Parameter	Units	Blank Result	Reporting Limit	Analyzed	Qualifiers
Sulfate	mg/L	<0.44	2.0	12/22/20 10:38	

LABORATORY CONTROL SAMPLE: 2163687

Parameter	Units	Spike Conc.	LCS Result	LCS % Rec	% Rec Limits	Qualifiers
Sulfate	mg/L	20	19.5	97	90-110	

MATRIX SPIKE & MATRIX SPIKE DUPLICATE: 2163688 2163689

Parameter	Units	40219767002 Result	MS Spike Conc.	MSD Spike Conc.	MS Result	MSD Result	MS % Rec	MSD % Rec	% Rec Limits	RPD	Max RPD	Qual
Sulfate	mg/L	2580	2000	2000	4220	4240	82	83	90-110	1	15 M0	

MATRIX SPIKE & MATRIX SPIKE DUPLICATE: 2163690 2163691

Parameter	Units	40219782002 Result	MS Spike Conc.	MSD Spike Conc.	MS Result	MSD Result	MS % Rec	MSD % Rec	% Rec Limits	RPD	Max RPD	Qual
Sulfate	mg/L	75.4	400	400	474	468	100	98	90-110	1	15	

Results presented on this page are in the units indicated by the "Units" column except where an alternate unit is presented to the right of the result.

REPORT OF LABORATORY ANALYSIS

This report shall not be reproduced, except in full, without the written consent of Pace Analytical Services, LLC.



QUALITY CONTROL DATA

Project: CAMP MARINA
 Pace Project No.: 40219782

QC Batch: 374360 Analysis Method: EPA 300.0
 QC Batch Method: EPA 300.0 Analysis Description: 300.0 IC Anions
 Laboratory: Pace Analytical Services - Green Bay

Associated Lab Samples: 40219782009, 40219782010

METHOD BLANK: 2163708 Matrix: Water

Associated Lab Samples: 40219782009, 40219782010

Parameter	Units	Blank Result	Reporting Limit	Analyzed	Qualifiers
Sulfate	mg/L	<0.44	2.0	12/22/20 10:40	

LABORATORY CONTROL SAMPLE: 2163709

Parameter	Units	Spike Conc.	LCS Result	LCS % Rec	% Rec Limits	Qualifiers
Sulfate	mg/L	20	19.9	100	90-110	

MATRIX SPIKE & MATRIX SPIKE DUPLICATE: 2163710 2163711

Parameter	Units	40219782009 Result	MS		MSD		MS % Rec	MSD % Rec	% Rec Limits	RPD	Max RPD	Qual
			Spike Conc.	Conc.	Result	Result						
Sulfate	mg/L	32.4	100	100	140	142	108	110	90-110	1	15	

MATRIX SPIKE & MATRIX SPIKE DUPLICATE: 2163712 2163713

Parameter	Units	40219984002 Result	MS		MSD		MS % Rec	MSD % Rec	% Rec Limits	RPD	Max RPD	Qual
			Spike Conc.	Conc.	Result	Result						
Sulfate	mg/L	26.2J	400	400	449	444	106	104	90-110	1	15	

Results presented on this page are in the units indicated by the "Units" column except where an alternate unit is presented to the right of the result.

REPORT OF LABORATORY ANALYSIS

This report shall not be reproduced, except in full,
 without the written consent of Pace Analytical Services, LLC.



QUALITY CONTROL DATA

Project: CAMP MARINA
 Pace Project No.: 40219782

QC Batch: 373939 Analysis Method: EPA 353.2
 QC Batch Method: EPA 353.2 Analysis Description: 353.2 Nitrate + Nitrite, preserved
 Laboratory: Pace Analytical Services - Green Bay
 Associated Lab Samples: 40219782001, 40219782002, 40219782003, 40219782004, 40219782005, 40219782006, 40219782007,
 40219782008, 40219782009, 40219782010

METHOD BLANK: 2161010 Matrix: Water
 Associated Lab Samples: 40219782001, 40219782002, 40219782003, 40219782004, 40219782005, 40219782006, 40219782007,
 40219782008, 40219782009, 40219782010

Parameter	Units	Blank Result	Reporting Limit	Analyzed	Qualifiers
Nitrogen, NO2 plus NO3	mg/L	<0.059	0.25	12/16/20 11:55	

LABORATORY CONTROL SAMPLE: 2161011

Parameter	Units	Spike Conc.	LCS Result	LCS % Rec	% Rec Limits	Qualifiers
Nitrogen, NO2 plus NO3	mg/L	2.5	2.5	100	90-110	

MATRIX SPIKE & MATRIX SPIKE DUPLICATE: 2161012 2161013

Parameter	Units	40219782002 Result	MS		MSD		MS % Rec	MSD % Rec	% Rec Limits	RPD	Max RPD	Qual
			Spike Conc.	MS Result	MSD Result							
Nitrogen, NO2 plus NO3	mg/L	0.082J	2.5	2.5	2.6	2.6	100	100	90-110	1	20	

MATRIX SPIKE & MATRIX SPIKE DUPLICATE: 2161014 2161015

Parameter	Units	40219782009 Result	MS		MSD		MS % Rec	MSD % Rec	% Rec Limits	RPD	Max RPD	Qual
			Spike Conc.	MS Result	MSD Result							
Nitrogen, NO2 plus NO3	mg/L	<0.059	2.5	2.5	2.5	2.5	100	100	90-110	0	20	

Results presented on this page are in the units indicated by the "Units" column except where an alternate unit is presented to the right of the result.

REPORT OF LABORATORY ANALYSIS

This report shall not be reproduced, except in full,
 without the written consent of Pace Analytical Services, LLC.

QUALIFIERS

Project: CAMP MARINA
Pace Project No.: 40219782

DEFINITIONS

DF - Dilution Factor, if reported, represents the factor applied to the reported data due to dilution of the sample aliquot.
ND - Not Detected at or above LOD.
J - Estimated concentration at or above the LOD and below the LOQ.
LOD - Limit of Detection adjusted for dilution factor, percent moisture, initial weight and final volume.
LOQ - Limit of Quantitation adjusted for dilution factor, percent moisture, initial weight and final volume.
S - Surrogate
1,2-Diphenylhydrazine decomposes to and cannot be separated from Azobenzene using Method 8270. The result for each analyte is a combined concentration.
Consistent with EPA guidelines, unrounded data are displayed and have been used to calculate % recovery and RPD values.
LCS(D) - Laboratory Control Sample (Duplicate)
MS(D) - Matrix Spike (Duplicate)
DUP - Sample Duplicate
RPD - Relative Percent Difference
NC - Not Calculable.
SG - Silica Gel - Clean-Up
U - Indicates the compound was analyzed for, but not detected at or above the adjusted LOD.
N-Nitrosodiphenylamine decomposes and cannot be separated from Diphenylamine using Method 8270. The result reported for each analyte is a combined concentration.
Pace Analytical is TNI accredited. Contact your Pace PM for the current list of accredited analytes.
TNI - The NELAC Institute.

BATCH QUALIFIERS

Batch: 374086

[M5] A matrix spike/matrix spike duplicate was not performed for this batch due to insufficient sample volume.

ANALYTE QUALIFIERS

D3 Sample was diluted due to the presence of high levels of non-target analytes or other matrix interference.
M0 Matrix spike recovery and/or matrix spike duplicate recovery was outside laboratory control limits.
S4 Surrogate recovery not evaluated against control limits due to sample dilution.

REPORT OF LABORATORY ANALYSIS

This report shall not be reproduced, except in full,
without the written consent of Pace Analytical Services, LLC.

QUALITY CONTROL DATA CROSS REFERENCE TABLE

Project: CAMP MARINA
Pace Project No.: 40219782

Lab ID	Sample ID	QC Batch Method	QC Batch	Analytical Method	Analytical Batch
40219782001	121020001	EPA 8015B Modified	374510		
40219782002	121020002	EPA 8015B Modified	374510		
40219782003	121020003	EPA 8015B Modified	374510		
40219782004	121120004	EPA 8015B Modified	374510		
40219782005	121120005	EPA 8015B Modified	374510		
40219782006	121120006	EPA 8015B Modified	374510		
40219782007	121120007	EPA 8015B Modified	374510		
40219782008	121120008	EPA 8015B Modified	374510		
40219782009	121120009	EPA 8015B Modified	374510		
40219782010	121120010	EPA 8015B Modified	374510		
40219782001	121020001	EPA 3510	373764	EPA 8270 by HVI	373843
40219782002	121020002	EPA 3510	373764	EPA 8270 by HVI	373843
40219782003	121020003	EPA 3510	373764	EPA 8270 by HVI	373843
40219782004	121120004	EPA 3510	373764	EPA 8270 by HVI	373843
40219782005	121120005	EPA 3510	374054	EPA 8270 by HVI	374086
40219782006	121120006	EPA 3510	374054	EPA 8270 by HVI	374086
40219782007	121120007	EPA 3510	374054	EPA 8270 by HVI	374086
40219782008	121120008	EPA 3510	374054	EPA 8270 by HVI	374086
40219782009	121120009	EPA 3510	374054	EPA 8270 by HVI	374086
40219782010	121120010	EPA 3510	374054	EPA 8270 by HVI	374086
40219782001	121020001	EPA 8260	373675		
40219782002	121020002	EPA 8260	373675		
40219782003	121020003	EPA 8260	373675		
40219782004	121120004	EPA 8260	373675		
40219782005	121120005	EPA 8260	373675		
40219782006	121120006	EPA 8260	373675		
40219782007	121120007	EPA 8260	373675		
40219782008	121120008	EPA 8260	373675		
40219782009	121120009	EPA 8260	373675		
40219782010	121120010	EPA 8260	373675		
40219782011	121120011	EPA 8260	373675		
40219782001	121020001	EPA 300.0	374356		
40219782002	121020002	EPA 300.0	374356		
40219782003	121020003	EPA 300.0	374356		
40219782004	121120004	EPA 300.0	374356		
40219782005	121120005	EPA 300.0	374356		
40219782006	121120006	EPA 300.0	374356		
40219782007	121120007	EPA 300.0	374356		
40219782008	121120008	EPA 300.0	374356		
40219782009	121120009	EPA 300.0	374360		
40219782010	121120010	EPA 300.0	374360		
40219782001	121020001	EPA 353.2	373939		
40219782002	121020002	EPA 353.2	373939		
40219782003	121020003	EPA 353.2	373939		
40219782004	121120004	EPA 353.2	373939		
40219782005	121120005	EPA 353.2	373939		

REPORT OF LABORATORY ANALYSIS

This report shall not be reproduced, except in full,
without the written consent of Pace Analytical Services, LLC.

QUALITY CONTROL DATA CROSS REFERENCE TABLE

Project: CAMP MARINA
Pace Project No.: 40219782

Lab ID	Sample ID	QC Batch Method	QC Batch	Analytical Method	Analytical Batch
40219782006	121120006	EPA 353.2	373939		
40219782007	121120007	EPA 353.2	373939		
40219782008	121120008	EPA 353.2	373939		
40219782009	121120009	EPA 353.2	373939		
40219782010	121120010	EPA 353.2	373939		

REPORT OF LABORATORY ANALYSIS

This report shall not be reproduced, except in full,
without the written consent of Pace Analytical Services, LLC.



Pace courier pickup

CHAIN-OF-CUSTODY / Analytical Request Document

The Chain-of-Custody is a LEGAL DOCUMENT. All relevant fields must be completed accurately.

Ramboll COC#:
75547-1220-001
40244782
Page: 1 Of 1

Section A Required Client Information:		Section B Required Project Information:		Section C Invoice Information:	
Company: Ramboll		Report To: Martinez, Dan		Attention:	
Address: 234 W. Florida Street		Copy To:		Company Name:	
Fifth Floor, Milwaukee, WI 53204		Purchase Order #:		Address:	
Email: dan.martinez@obg.com		Project Name: Camp Marina		Face Quote:	
Phone: 414-837-3713 Fax:		Project #:		Pace Project Manager: brian.basten@pacelabs.com,	
Requested Due Date:				Face Profile #: 5624	

ITEM #	SAMPLE ID One Character per box. (A-Z, 0-9 /, -) Sample IDs must be unique	MATRIX CODE (see valid codes to left)	SAMPLE TYPE (S=GRAB C=COMP)	COLLECTED				SAMPLE TEMP AT COLLECTION	Preservatives										Residual Chlorine (Y/N)							
				START		END			# OF CONTAINERS	Unpreserved	H2SO4	HNO3	HCl	NaOH	Na2S2O3	Methanol	Other	Analytical Test		BTEX by 8260	PAH by 8270 SIM: (low vol)	Nitrate + Nitrite	Sulfate	Methane by 8015B	Trip BLANK	
				DATE	TIME	DATE	TIME																			
1	121020001	EW	G			12/10/20	1005	8	X									X								001
2	121020002						1041	24	X									X								002
3	121020003						1157	8	X									X								003
4	121120004					12/11/20	0844	8	X									X								004
5	121120005						0918	1	X									X								005
6	121120006						0923	1	X									X								006
7	121120007						0950	1	X									X								007
8	121120008						1021	1	X									X								008
9	121120009						1055	1	X									X								009
10	121120010						1130	8	X									X								010
11	121120011						-	2										X								011

ADDITIONAL COMMENTS	REMOVED BY / AFFILIATION	DATE	TIME	ACCEPTED BY / AFFILIATION	DATE	TIME	SAMPLE CONDITIONS
121620002 - MS/MSD	[Signature]	12/11/20	1205	[Signature]	12/12/20	0845	Y Y Y

Custody Seal # 75547-001 & 002

SAMPLER NAME AND SIGNATURE		TEMP in C	Received on Ice (Y/N)	Custody Sealed (Y/N)	Cooler (Y/N)	Samples Intact (Y/N)
PRINT Name of SAMPLER: Daniel Martinez	SIGNATURE of SAMPLER: [Signature]					
DATE Signed: 12-11-20						



1241 Bellevue Street, Green Bay, WI 54302

Document Name:
Sample Condition Upon Receipt (SCUR)

Document No.:
F-GB-C-031-Rev.07

Document Revised: 25Apr2018

Issuing Authority:
Pace Green Bay Quality Office

Sample Condition Upon Receipt Form (SCUR)

Client Name: Ramboll Project # 40219282

Additional Comments/Resolution: _____

ID ends in '001' - placed by time: 002 - (1) A65U + (4) MEE V69H

time '1007': 001 (1) MEE V69H


no date (V69Hs): 003 (1) MEE, 007 (1) MEE, 008 (1) MEE + (1) BTEX,
011

no time: 008 (1) BTEX V69H

M/R 12-12-2)

Project Manager Review: _____

Date: _____

 1241 Bellevue Street, Green Bay, WI 54302	Document Name: Sample Condition Upon Receipt (SCUR)	Document Revised: 26Mar2020
	Document No.: ENV-FRM-GBAY-0014-Rev.00	Author: Pace Green Bay Quality Office

Sample Condition Upon Receipt Form (SCUR)

Client Name: Ramboll

Project #:

WO#: **40219782**

Courier: CS Logistics Fed Ex Speedee UPS Walco
 Client Pace Other: _____



Tracking #: _____
 Custody Seal on Cooler/Box Present: yes no Seals intact: yes no
 Custody Seal on Samples Present: yes no Seals intact: yes no
 Packing Material: Bubble Wrap Bubble Bags None Other
 Thermometer Used SR - n/a Type of Ice: Wet Blue Dry None

Samples on ice, cooling process has begun

Cooler Temperature Uncorr: ROT / Corr: _____

Temp Blank Present: yes no

Biological Tissue is Frozen: yes no

Person examining contents:
 Date: 12-12-20 / Initials: ML
 Labeled By Initials: ML

Temp should be above freezing to 6°C.
 Biota Samples may be received at ≤ 0°C if shipped on Dry Ice.

Chain of Custody Present:	<input checked="" type="checkbox"/> Yes <input type="checkbox"/> No <input type="checkbox"/> N/A	1.
Chain of Custody Filled Out:	<input type="checkbox"/> Yes <input checked="" type="checkbox"/> No <input type="checkbox"/> N/A	2. copy to info, proj #, incomplete invoice
Chain of Custody Relinquished:	<input checked="" type="checkbox"/> Yes <input type="checkbox"/> No <input type="checkbox"/> N/A	3. info ML 12-12-20
Sampler Name & Signature on COC:	<input checked="" type="checkbox"/> Yes <input type="checkbox"/> No <input type="checkbox"/> N/A	4.
Samples Arrived within Hold Time:	<input checked="" type="checkbox"/> Yes <input type="checkbox"/> No	5.
- VOA Samples frozen upon receipt	<input type="checkbox"/> Yes <input type="checkbox"/> No	Date/Time:
Short Hold Time Analysis (<72hr):	<input type="checkbox"/> Yes <input checked="" type="checkbox"/> No	6.
Rush Turn Around Time Requested:	<input type="checkbox"/> Yes <input checked="" type="checkbox"/> No	7.
Sufficient Volume:	<input checked="" type="checkbox"/> Yes <input checked="" type="checkbox"/> No <input type="checkbox"/> MS/MSD: <input checked="" type="checkbox"/> Yes <input type="checkbox"/> No <input type="checkbox"/> N/A	8. 0.10 under volume for PAH x 40ml ML 12-12-20
Correct Containers Used:	<input checked="" type="checkbox"/> Yes <input type="checkbox"/> No	9.
- Pace Containers Used:	<input checked="" type="checkbox"/> Yes <input type="checkbox"/> No <input type="checkbox"/> N/A	
- Pace IR Containers Used:	<input type="checkbox"/> Yes <input type="checkbox"/> No <input checked="" type="checkbox"/> N/A	
Containers Intact:	<input checked="" type="checkbox"/> Yes <input type="checkbox"/> No	10.
Filtered volume received for Dissolved tests	<input type="checkbox"/> Yes <input type="checkbox"/> No <input checked="" type="checkbox"/> N/A	11.
Sample Labels match COC:	<input type="checkbox"/> Yes <input checked="" type="checkbox"/> No <input type="checkbox"/> N/A	12. see attached sheet ML 12-12-20
- Includes date/time/ID/Analysis Matrix: <u>WT</u>		
Trip Blank Present:	<input checked="" type="checkbox"/> Yes <input type="checkbox"/> No <input type="checkbox"/> N/A	13.
Trip Blank Custody Seals Present	<input checked="" type="checkbox"/> Yes <input type="checkbox"/> No <input type="checkbox"/> N/A	
Pace Trip Blank Lot # (if purchased): <u>455</u>		

Client Notification/ Resolution:

If checked, see attached form for additional comments

Person Contacted: _____ Date/Time: _____
 Comments/ Resolution: _____

PM Review is documented electronically in LIMs. By releasing the project, the PM acknowledges they have reviewed the sample logir