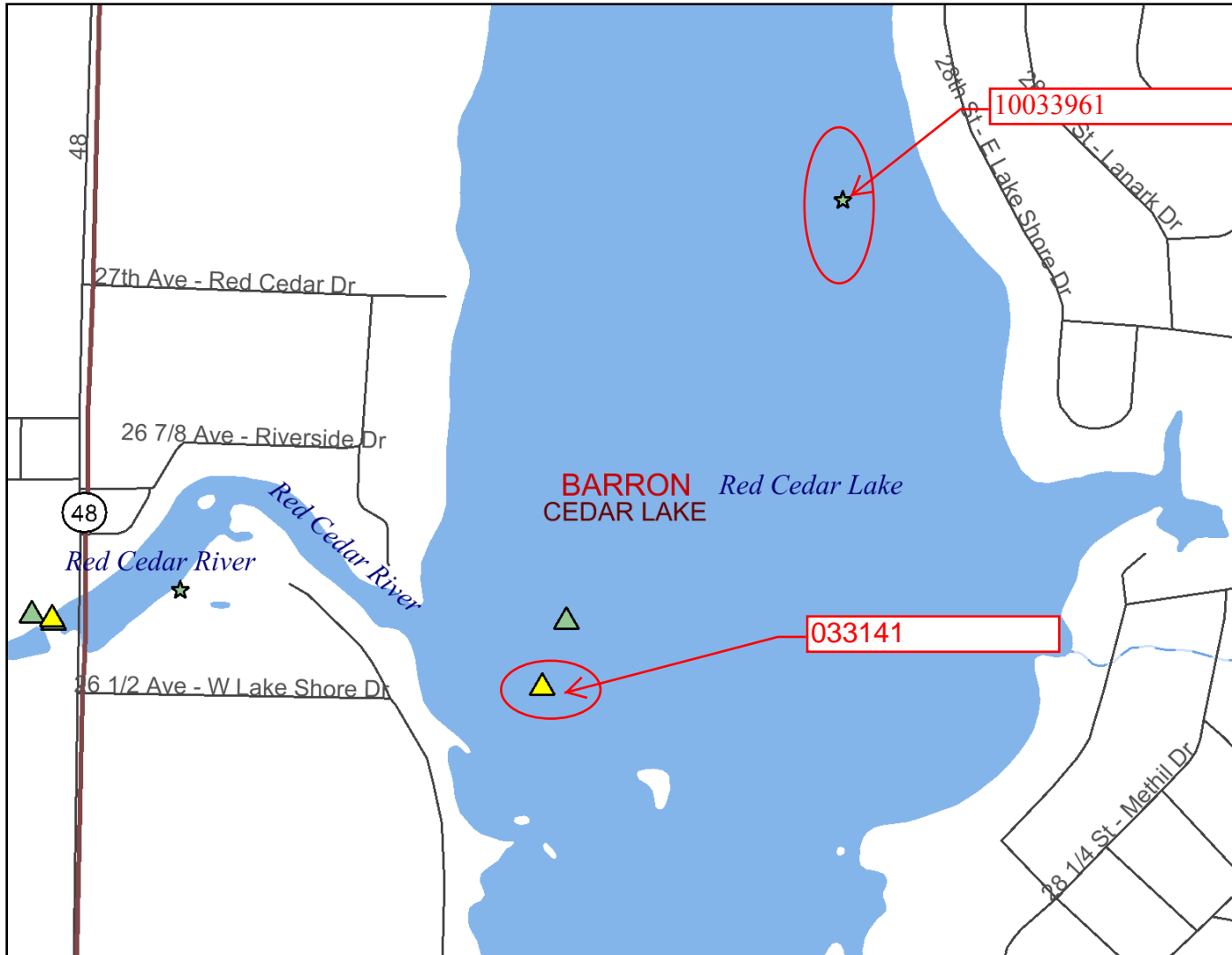


Map Created on Feb 17, 2012



Legend

SWIMS Monitoring Station Points With Data

- Station with historic data
- Station with recent data

SWIMS Monitoring Station Points

- Inactive Obsolete
- New Pending
- Inactive Pending
- FHDB Pending
- Active

Major Highways

- Interstate
- State Highway
- U.S. Highways
- County Roads

Local Roads

- Local Roads

24K County Boundaries

- Civil Towns

- Civil Town

- 24K Open Water

- 24K Rivers and Shorelines

- Intermittent

- Fluctuating

- Perennial

Cities and Villages

- Village

- City

0 1200 2400 3600 ft.



Scale: 1:12,441

This map is a user generated static output from an Internet mapping site and is for general reference only. Data layers that appear on this map may or may not be accurate, current, or otherwise reliable. THIS MAP IS NOT TO BE USED FOR NAVIGATION.