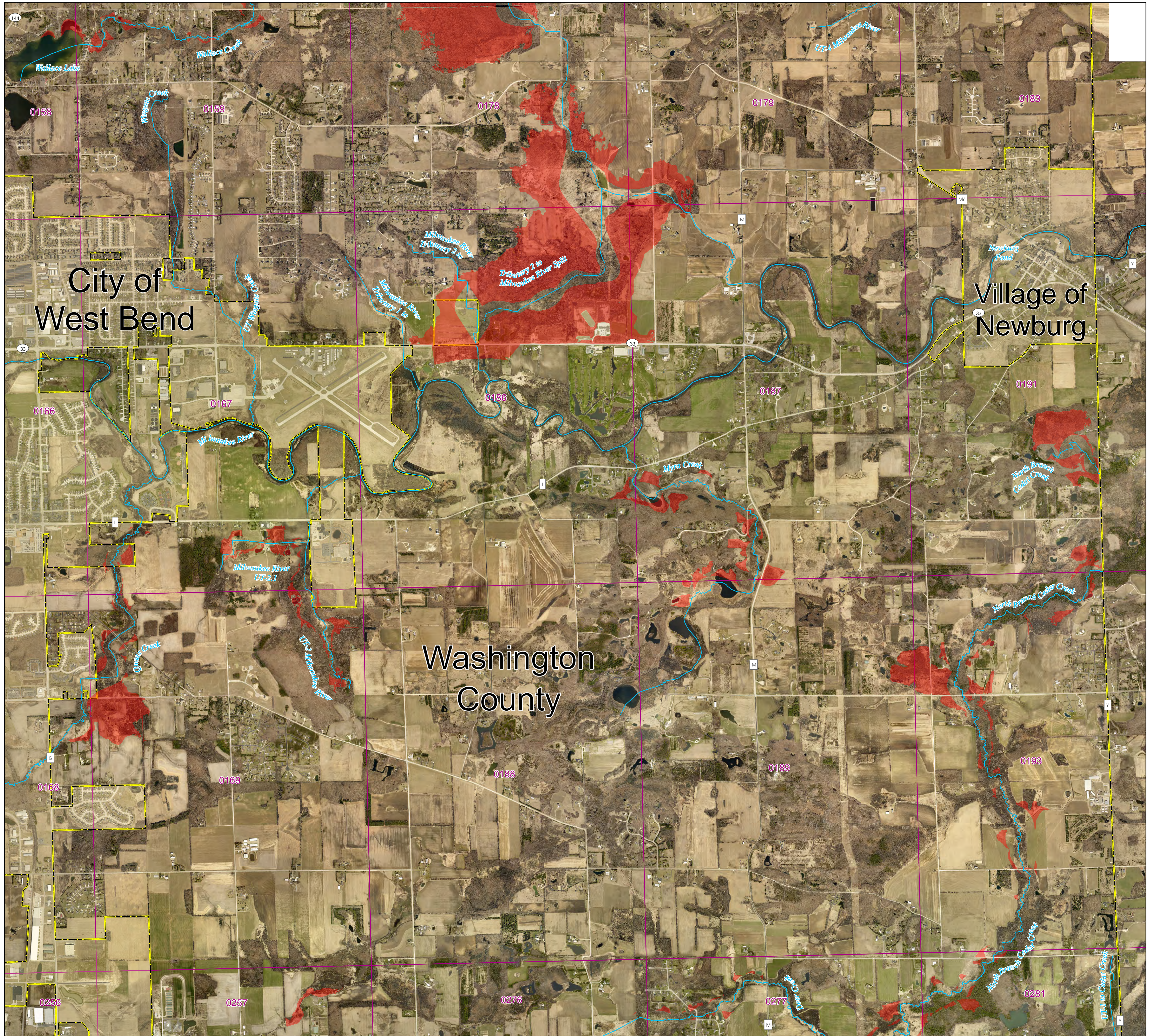


Washington County and incorporated areas Flood Storage Districts

T11N R20E
Panel 6

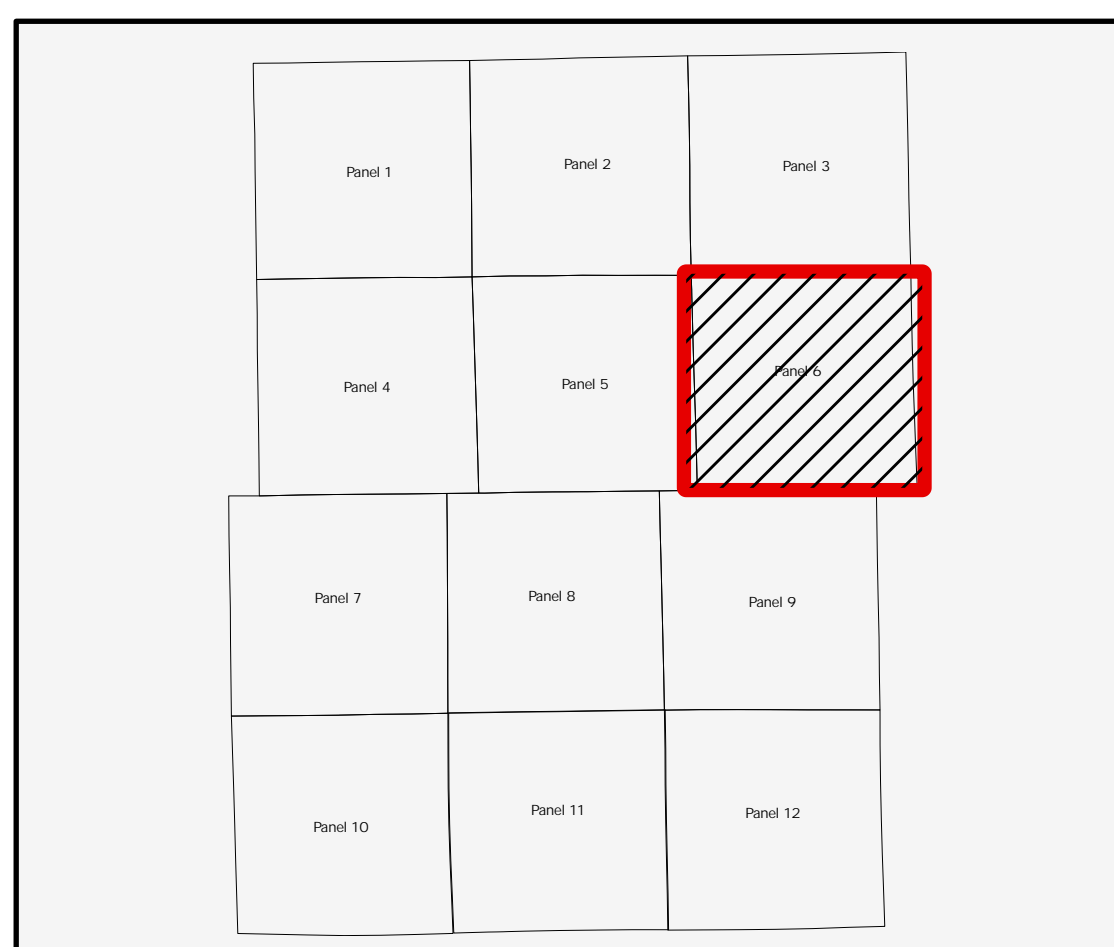
Sources of Study: WDNR
Effective Date: TBD
Approved by: WDNR



LEGEND

- Flood Storage Districts
 - Rivers/streams
 - FIRM Panel
- POLITICAL AREAS**
- Municipalities
 - Washington County

0 1,250 2,500 5,000 Feet
1:18,000



Coordinate System: NAD 1983 HARN UTM Zone 16

Aerial photography was acquired in the Spring of 2022 and was provided in digital format by Washington County.

Flood Storage Districts are available for viewing after the Letter of Final Determination (LFD) date at DNR's Surface Water Data Viewer: dnr.wisconsin.gov/topic/SurfaceWater/swdv (or go to dnr.wi.gov and search "SWDV")

