

WISCONSIN DEPARTMENT OF NATURAL RESOURCES

Wisconsin's 2020 Open Water Sportfishing Effort And Harvest From Lake Michigan And Green Bay

APRIL 2021

WRITTEN BY

LAURA SCHMIDT

DNR Fisheries Management
Southern Lake Michigan Fisheries Work Unit
600 E. Greenfield Ave.
Milwaukee, WI 53204

OVERVIEW

The sport fishery in Wisconsin waters of Lake Michigan and Green Bay was documented from May 2020 through November 2020. Due to the COVID-19 pandemic, charter fishing trips began in May, along with the moored-boat survey. Wisconsin DNR creel clerks began the creel survey in July. Therefore, 2020 results are for May through November only, and this should be considered when comparing 2020 to previous years.

Fishing effort, harvest and harvest-rates were determined from 1) a stratified-random creel survey of launched-boat, pier, shore and stream anglers; 2) a randomized mail survey of moored-boat anglers; and 3) mandatory charter-boat reporting. For a detailed description of methods, see Eggold, 1995.

RESULTS

Anglers spent an estimated 1,964,085 hours fishing on Lake Michigan and Green Bay during 2020 with boat-angler effort at 1,609,924 hours or 82% of the total hours. Estimated angler hours for the pier fishery was 81,437 hours, 111,130 angler hours for the shore fishery and 161,594 hours for the stream fishery. Note that the stream fishery estimates do not include the spring.

The estimated harvest of 573,214 fish was dominated by yellow perch (255,291) followed by walleye (90,142). Walleye and yellow perch harvest combined was 60% of the total estimated harvest. The boat fishery, comprised of launched-boat, moored-boat and charter-boat anglers, dominated the fishery by harvesting an estimated 519,699 fish or 91% of the total harvest, and was again led by yellow perch (232,014) followed by walleye (86,943). Pier anglers harvested 7,726 fish, primarily yellow perch (6,461) and Chinook salmon (685), followed by rainbow trout (181). Stream anglers

harvested 29,452 fish, dominated by Chinook salmon (18,206) and followed by yellow perch (5,314) and walleye (3,161). Shore anglers harvested 16,337 fish, primarily yellow perch (11,502) followed by Chinook salmon (3,316).

Overall harvest-rates were highest for yellow perch at 0.1300 fish/hour, followed by walleye (0.0459 fish/hour) and Chinook salmon (0.0412 fish/hour). These three species also had the highest harvest-rates in 2019.

The 2020 Chinook harvest of 80,890 fish was higher than 2019's harvest, but approximately 42% below the ten-year average. The overall harvest rate for salmonids in 2020 was 0.1106, which is only slightly below the ten-year average harvest rate of 0.1311.

Coho harvest in 2020 was 40,349 fish, which was an increase from the 2019 harvest. The 2020 rainbow trout harvest of 54,430 fish was also an increase from 2019, but approximately 16% below the ten-year average. Brown trout harvest in 2020 was 3,317, which was 79% below the ten-year average. A total of 38,271 lake trout were harvested in 2020, which was 39% above the ten-year average.

The 2020 harvest of yellow perch in Green Bay was 253,278, which was 56% above the ten-year average and the highest harvest since 2013. The Lake Michigan yellow perch harvest in 2020 was 2,013 fish. Perch harvest in Lake Michigan remains on an overall downward trend observed since 1993.

Biological data was not collected from sport-caught fish in 2020. Biological data collection has resumed for 2021, and average weight, length, and standard weight of sport-caught salmonids will be calculated after the end of the creel season.

REFERENCES

Eggold, B.T. 1995. Wisconsin's 1995 open water sportfishing effort and catch from Lake Michigan and Green Bay. Wisconsin Department of Natural Resources, Plymouth, Wisconsin. 18 pages.

Table 1. Estimated angler effort (hours) by location in Wisconsin waters of Lake Michigan and Green Bay during March through December of 2011 through 2020*. Standard deviations are in italics.

Location	2011	2012	2013	2014	2015	2016	2017	2018	2019	2020	Average
Kenosha Co.	116,032 <i>5,801</i>	135,980 <i>2,851</i>	128,467 <i>5,199</i>	129,736 <i>5,422</i>	101,058 <i>4,990</i>	108,874 <i>5,432</i>	90,700 <i>3,810</i>	92,655 <i>4,185</i>	99,315 <i>4,417</i>	91,284 <i>4,797</i>	109,410 <i>4,766</i>
Racine Co.	151,135 <i>7,225</i>	131,342 <i>10,091</i>	121,473 <i>8,394</i>	122,082 <i>7,073</i>	102,948 <i>9,243</i>	106,901 <i>7,928</i>	95,490 <i>6,787</i>	110,575 <i>11,954</i>	98,387 <i>6,374</i>	78,832 <i>6,721</i>	111,917 <i>8,352</i>
Milwaukee Co.	276,843 <i>15,204</i>	324,011 <i>14,704</i>	290,544 <i>11,332</i>	255,140 <i>10,894</i>	267,451 <i>10,279</i>	295,517 <i>12,743</i>	267,191 <i>14,736</i>	233,031 <i>13,192</i>	180,123 <i>8,028</i>	179,950 <i>10,877</i>	256,980 <i>12,395</i>
Ozaukee Co.	256,961 <i>19,364</i>	208,450 <i>12,203</i>	203,861 <i>9,749</i>	189,524 <i>9,532</i>	172,896 <i>8,481</i>	215,153 <i>13,880</i>	179,360 <i>13,185</i>	167,683 <i>10,435</i>	156,411 <i>10,337</i>	160,473 <i>8,465</i>	191,077 <i>11,982</i>
Sheboygan Co.	199,350 <i>9,537</i>	225,384 <i>11,503</i>	205,563 <i>9,122</i>	214,111 <i>10,191</i>	216,378 <i>11,974</i>	210,632 <i>11,803</i>	179,246 <i>9,027</i>	163,946 <i>9,813</i>	176,289 <i>16,500</i>	148,393 <i>9,720</i>	193,929 <i>11,124</i>
Manitowoc Co.	179,525 <i>8,336</i>	212,739 <i>10,796</i>	177,336 <i>8,230</i>	187,654 <i>9,404</i>	168,961 <i>8,303</i>	183,440 <i>10,233</i>	139,241 <i>7,010</i>	141,366 <i>8,009</i>	132,408 <i>6,735</i>	141,855 <i>12,574</i>	166,453 <i>9,125</i>
Kewaunee Co.	323,860 <i>12,740</i>	311,407 <i>7,780</i>	372,305 <i>14,837</i>	352,498 <i>15,032</i>	367,149 <i>15,581</i>	288,935 <i>13,131</i>	318,589 <i>13,337</i>	327,150 <i>13,794</i>	222,088 <i>9,598</i>	236,238 <i>11,413</i>	312,022 <i>12,941</i>
E. Door Co.	151,136 <i>7,001</i>	204,549 <i>23,159</i>	195,887 <i>12,008</i>	172,324 <i>8,761</i>	218,354 <i>19,796</i>	204,769 <i>10,839</i>	193,014 <i>9,108</i>	187,941 <i>10,802</i>	181,342 <i>12,741</i>	127,333 <i>10,704</i>	183,665 <i>13,387</i>
Green Bay	886,143 <i>40,835</i>	771,724 <i>26,553</i>	1,084,541 <i>45,814</i>	990,101 <i>46,164</i>	1,127,400 <i>36,334</i>	1,016,928 <i>35,232</i>	1,087,056 <i>40,209</i>	1,032,530 <i>34,218</i>	1,115,720 <i>38,818</i>	799,727 <i>30,260</i>	991,187 <i>37,913</i>
Total Effort	2,540,985 <i>52,261</i>	2,525,586 <i>45,010</i>	2,779,977 <i>54,178</i>	2,613,170 <i>53,991</i>	2,742,595 <i>49,548</i>	2,631,149 <i>47,145</i>	2,549,887 <i>49,597</i>	2,456,877 <i>45,624</i>	2,362,083 <i>48,065</i>	1,964,085 <i>40,880</i>	2,516,639 <i>48,793</i>

*Note: Sport Fishing estimates for 2020 are for May – December only.

Table 2. Estimated harvest and total harvest-rate (number per hour, all anglers combined) of salmonids in Wisconsin waters of Lake Michigan and Green Bay during March through December of 2011 through 2020*. Standard deviations are in italics.

Species	2011	2012	2013	2014	2015	2016	2017	2018	2019	2020	Average
Coho salmon	157,367 <i>11,432</i>	73,395 <i>3,114</i>	88,933 <i>3,922</i>	52,297 <i>6,577</i>	41,067 <i>4,339</i>	125,748 <i>5,572</i>	119,788 <i>7,135</i>	85,459 <i>5,176</i>	32,197 <i>2,003</i>	40,349 <i>2,585</i>	81,660 <i>18,366</i>
Chinook salmon	169,752 <i>4,083</i>	390,385 <i>9,058</i>	144,807 <i>4,330</i>	130,231 <i>3,562</i>	114,528 <i>3,549</i>	138,110 <i>4,725</i>	84,163 <i>3,132</i>	84,228 <i>3,262</i>	63,043 <i>4,012</i>	80,890 <i>3,782</i>	140,014 <i>14,694</i>
Rainbow trout	75,442 <i>2,588</i>	75,981 <i>2,592</i>	58,429 <i>1,978</i>	72,724 <i>2,259</i>	59,127 <i>1,714</i>	77,004 <i>2,962</i>	66,599 <i>2,661</i>	57,141 <i>2,011</i>	50,258 <i>3,105</i>	54,430 <i>1,996</i>	64,714 <i>7,674</i>
Brown trout	9,936 <i>846</i>	21,337 <i>1,768</i>	17,052 <i>1,273</i>	23,511 <i>1,813</i>	20,335 <i>1,894</i>	23,885 <i>2,632</i>	20,404 <i>1,715</i>	12,625 <i>1,116</i>	8,013 <i>969</i>	3,317 <i>519</i>	16,042 <i>4,966</i>
Brook trout	26 <i>0</i>	18 <i>0</i>	0 <i>0</i>	0 <i>0</i>	0 <i>0</i>	0 <i>0</i>	0 <i>0</i>	0 <i>0</i>	0 <i>0</i>	0 <i>0</i>	4 <i>0</i>
Lake trout	17,788 <i>1,236</i>	29,094 <i>1,261</i>	27,246 <i>1,003</i>	25,424 <i>1,098</i>	35,778 <i>1,482</i>	19,046 <i>865</i>	20,345 <i>1,115</i>	26,747 <i>1,236</i>	34,197 <i>2,438</i>	38,271 <i>1,645</i>	27,394 <i>4,438</i>
Total Harvest	430,311 <i>12,502</i>	590,210 <i>10,158</i>	336,467 <i>6,406</i>	304,187 <i>8,104</i>	270,835 <i>6,285</i>	383,793 <i>8,356</i>	311,299 <i>8,484</i>	266,200 <i>6,652</i>	187,708 <i>6,052</i>	217,257 <i>5,286</i>	329,827 <i>25,619</i>
Harvest-Rate	0.1693	0.2337	0.1210	0.1164	0.0988	0.1459	0.1221	0.1083	0.0795	0.1106	0.1311

*Note: Sport Fishing estimates for 2020 are for May – December only.

Table 3. Estimated harvest and total harvest-rate (number per hour, all anglers combined) of yellow perch in Wisconsin waters of Lake Michigan and Green Bay during March through December of 2011 through 2020*. Standard deviations are in italics.

Location	2011	2012	2013	2014	2015	2016	2017	2018	2019	2020	Average
Green Bay	254,942 <i>24,973</i>	148,980 <i>13,685</i>	221,158 <i>18,974</i>	117,012 <i>12,283</i>	98,263 <i>10,029</i>	76,281 <i>9,289</i>	117,412 <i>12,404</i>	115,896 <i>11,044</i>	84,200 <i>15,389</i>	253,278 <i>21,751</i>	148,742 <i>15,794</i>
Harvest-Rate	0.2877	0.1930	0.2039	0.1182	0.0872	0.0750	0.1080	0.1122	0.0755	0.3167	0.1577
Lake Michigan	16,982 <i>2,296</i>	9,115 <i>1,071</i>	8,796 <i>1,221</i>	9,277 <i>1,108</i>	5,257 <i>1,000</i>	2,089 <i>586</i>	2,481 <i>537</i>	4,026 <i>787</i>	3,600 <i>882</i>	2,013 <i>674</i>	6,364 <i>1,123</i>
Harvest-Rate	0.0103	0.0052	0.0052	0.0057	0.0033	0.0013	0.0017	0.0028	0.0029	0.0017	0.0040
Total Harvest	271,924 <i>25,078</i>	158,095 <i>13,727</i>	229,954 <i>19,013</i>	126,289 <i>12,333</i>	103,520 <i>10,079</i>	78,370 <i>9,307</i>	119,893 <i>12,416</i>	119,922 <i>11,072</i>	87,800 <i>15,414</i>	255,291 <i>21,761</i>	173,606 <i>16,238</i>
Harvest-Rate	0.1070	0.0626	0.0827	0.0483	0.0377	0.0298	0.0470	0.0488	0.0372	0.1300	0.0631

Note: Table 3 reflects that some Door County sites represent Green Bay for yellow perch harvest statistics.

*Note: Sport Fishing estimates for 2020 are for May – December only.

Table 4. Estimated harvest-rate (harvest per hour), harvest and effort for all survey areas and **ALL FISHERY TYPES** for Wisconsin waters of Lake Michigan and Green Bay during 2020. Standard deviations are in italics.

Species	Harvest per hour	May	June	July	August	Sept/Oct	Nov/Dec	Season
Coho salmon	0.0205	5,325 <i>2,110</i>	15,864 <i>518</i>	10,152 <i>927</i>	6,617 <i>988</i>	2,391 <i>355</i>	0 <i>0</i>	40,349 <i>2,585</i>
Chinook salmon	0.0412	934 <i>546</i>	9,175 <i>485</i>	18,359 <i>1,374</i>	18,234 <i>1,266</i>	34,188 <i>3,208</i>	0 <i>0</i>	80,890 <i>3,782</i>
Rainbow trout	0.0277	1,624 <i>397</i>	15,076 <i>610</i>	17,580 <i>1,411</i>	18,055 <i>1,181</i>	2,095 <i>257</i>	0 <i>0</i>	54,430 <i>1,996</i>
Brown trout	0.0017	306 <i>266</i>	225 <i>64</i>	920 <i>270</i>	862 <i>182</i>	1,004 <i>298</i>	0 <i>0</i>	3,317 <i>519</i>
Brook trout	0.0000	0 <i>0</i>	0 <i>0</i>	0 <i>0</i>	0 <i>0</i>	0 <i>0</i>	0 <i>0</i>	0 <i>0</i>
Lake trout	0.0195	1,908 <i>268</i>	6,659 <i>415</i>	12,125 <i>1,033</i>	14,907 <i>1,165</i>	2,672 <i>189</i>	0 <i>0</i>	38,271 <i>1,645</i>
Northern pike	0.0008	0 <i>0</i>	0 <i>0</i>	197 <i>107</i>	536 <i>247</i>	759 <i>199</i>	95 <i>68</i>	1,587 <i>335</i>
White perch	0.0005	0 <i>0</i>	0 <i>0</i>	94 <i>83</i>	648 <i>540</i>	178 <i>138</i>	0 <i>0</i>	920 <i>564</i>
Smallmouth bass	0.0041	206 <i>173</i>	263 <i>137</i>	3,604 <i>1,635</i>	3,634 <i>1,003</i>	310 <i>112</i>	0 <i>0</i>	8,017 <i>1,934</i>
Yellow perch	0.1300	57 <i>39</i>	260 <i>113</i>	29,764 <i>6,773</i>	113,219 <i>17,846</i>	107,198 <i>13,928</i>	4,793 <i>1,749</i>	255,291 <i>23,630</i>
Walleye	0.0459	0 <i>0</i>	323 <i>142</i>	54,509 <i>5,405</i>	27,757 <i>4,321</i>	6,110 <i>1,464</i>	1,443 <i>516</i>	90,142 <i>7,075</i>
Total Harvest	0.2918	10,360 <i>2,254</i>	47,845 <i>1,051</i>	147,304 <i>9,146</i>	204,469 <i>18,544</i>	156,905 <i>14,381</i>	6,236 <i>1,824</i>	573,214 <i>25,309</i>
Angler Hours		24,066 <i>4,270</i>	136,858 <i>5,164</i>	651,881 <i>23,224</i>	634,639 <i>28,245</i>	504,132 <i>16,786</i>	12,509 <i>2,704</i>	1,964,085 <i>40,789</i>

Table 5. Estimated harvest-rate (harvest per hour), harvest and effort for the **BOAT FISHERY** with all surveys combined for Wisconsin waters of Lake Michigan and Green Bay during 2020. Standard deviations are in italics.

Species	Harvest per hour	May	June	July	August	Sept/Oct	Nov/Dec	Season
Coho salmon	0.0239	5,325 <i>2,110</i>	15,864 <i>518</i>	10,152 <i>927</i>	6,479 <i>978</i>	705 <i>246</i>	0 <i>0</i>	38,525 <i>2,568</i>
Chinook salmon	0.0365	934 <i>541</i>	9,175 <i>485</i>	18,321 <i>1,374</i>	18,022 <i>1,261</i>	12,231 <i>2,728</i>	0 <i>0</i>	58,683 <i>3,384</i>
Rainbow trout	0.0335	1,624 <i>397</i>	15,076 <i>610</i>	17,554 <i>1,411</i>	18,041 <i>1,181</i>	1,668 <i>219</i>	0 <i>0</i>	53,963 <i>1,991</i>
Brown trout	0.0016	306 <i>265</i>	225 <i>64</i>	762 <i>247</i>	862 <i>182</i>	488 <i>91</i>	0 <i>0</i>	2,643 <i>420</i>
Brook trout	0.0000	0 <i>0</i>	0 <i>0</i>	0 <i>0</i>	0 <i>0</i>	0 <i>0</i>	0 <i>0</i>	0 <i>0</i>
Lake trout	0.0238	1,908 <i>268</i>	6,659 <i>415</i>	12,125 <i>1,033</i>	14,907 <i>1,165</i>	2,672 <i>189</i>	0 <i>0</i>	38,271 <i>1,645</i>
Northern pike	0.0008	0 <i>0</i>	0 <i>0</i>	144 <i>102</i>	514 <i>246</i>	521 <i>182</i>	95 <i>68</i>	1,274 <i>322</i>
White perch	0.0004	0 <i>0</i>	0 <i>0</i>	0 <i>0</i>	648 <i>540</i>	33 <i>33</i>	0 <i>0</i>	681 <i>541</i>
Smallmouth bass	0.0042	206 <i>173</i>	263 <i>137</i>	3,583 <i>1,635</i>	2,457 <i>995</i>	193 <i>98</i>	0 <i>0</i>	6,702 <i>1,929</i>
Yellow perch	0.1441	57 <i>39</i>	260 <i>113</i>	27,011 <i>6,761</i>	111,372 <i>17,833</i>	90,546 <i>13,571</i>	2,768 <i>1,747</i>	232,014 <i>23,408</i>
Walleye	0.0540	0 <i>0</i>	323 <i>142</i>	54,509 <i>5,405</i>	27,757 <i>4,321</i>	3,720 <i>957</i>	634 <i>516</i>	86,943 <i>6,987</i>
Total Harvest	0.3228	10,360 <i>2,253</i>	47,845 <i>1,051</i>	144,161 <i>9,136</i>	201,059 <i>18,530</i>	112,777 <i>13,883</i>	3,402 <i>1,822</i>	519,699 <i>25,015</i>
Angler Hours		24,066 <i>4,270</i>	136,858 <i>5,165</i>	605,760 <i>22,981</i>	583,896 <i>27,908</i>	251,781 <i>13,851</i>	7,563 <i>2,290</i>	1,609,924 <i>39,290</i>

Table 6. Estimated harvest-rate (harvest per hour), harvest and effort for the **PIER FISHERY** with all survey areas combined for Wisconsin waters of Lake Michigan and Green Bay during 2020. Standard deviations are in italics.

Species	Harvest per hour	July	August	Sept/Oct	Nov/Dec	Season
Coho salmon	0.0005	0 <i>0</i>	0 <i>0</i>	42 <i>30</i>	0 <i>0</i>	42 <i>30</i>
Chinook salmon	0.0084	38 <i>24</i>	98 <i>49</i>	549 <i>228</i>	0 <i>0</i>	685 <i>234</i>
Rainbow trout	0.0022	26 <i>21</i>	0 <i>0</i>	155 <i>79</i>	0 <i>0</i>	181 <i>82</i>
Brown trout	0.0019	158 <i>110</i>	0 <i>0</i>	0 <i>0</i>	0 <i>0</i>	158 <i>110</i>
Brook trout	0.0000	0 <i>0</i>	0 <i>0</i>	0 <i>0</i>	0 <i>0</i>	0 <i>0</i>
Lake trout	0.0000	0 <i>0</i>	0 <i>0</i>	0 <i>0</i>	0 <i>0</i>	0 <i>0</i>
Northern pike	0.0008	0 <i>0</i>	0 <i>0</i>	65 <i>0</i>	0 <i>0</i>	65 <i>0</i>
White perch	0.0000	0 <i>0</i>	0 <i>0</i>	0 <i>0</i>	0 <i>0</i>	0 <i>0</i>
Smallmouth bass	0.0012	0 <i>0</i>	0 <i>0</i>	96 <i>50</i>	0 <i>0</i>	96 <i>50</i>
Yellow perch	0.0793	2,267 <i>173</i>	269 <i>179</i>	3,925 <i>348</i>	0 <i>0</i>	6,461 <i>428</i>
Walleye	0.0005	0 <i>0</i>	0 <i>0</i>	38 <i>41</i>	0 <i>0</i>	38 <i>41</i>
Total Harvest	0.0949	2,489 <i>207</i>	367 <i>186</i>	4,870 <i>429</i>	0 <i>0</i>	7,726 <i>512</i>
Angler Hours		22,706 <i>2,273</i>	25,556 <i>2,945</i>	33,175 <i>3,847</i>	0 <i>0</i>	81,437 <i>5,352</i>

Table 7. Estimated harvest-rate (harvest per hour), harvest and effort for the **SHORE FISHERY** with all survey areas combined for Wisconsin waters of Lake Michigan and Green Bay during 2020. Standard deviations are in italics.

Species	Harvest per hour	July	August	Sept/Oct	Nov/Dec	Season
Coho salmon	0.0071	0 <i>0</i>	138 <i>141</i>	656 <i>176</i>	0 <i>0</i>	794 <i>226</i>
Chinook salmon	0.0298	0 <i>0</i>	114 <i>98</i>	3,202 <i>352</i>	0 <i>0</i>	3,316 <i>365</i>
Rainbow trout	0.0022	0 <i>0</i>	14 <i>14</i>	231 <i>106</i>	0 <i>0</i>	245 <i>107</i>
Brown trout	0.0009	0 <i>0</i>	0 <i>0</i>	105 <i>67</i>	0 <i>0</i>	105 <i>67</i>
Brook trout	0.0000	0 <i>0</i>	0 <i>0</i>	0 <i>0</i>	0 <i>0</i>	0 <i>0</i>
Lake trout	0.0000	0 <i>0</i>	0 <i>0</i>	0 <i>0</i>	0 <i>0</i>	0 <i>0</i>
Northern pike	0.0014	53 <i>33</i>	22 <i>15</i>	84 <i>52</i>	0 <i>0</i>	159 <i>63</i>
White perch	0.0000	0 <i>0</i>	0 <i>0</i>	0 <i>0</i>	0 <i>0</i>	0 <i>0</i>
Smallmouth bass	0.0020	21 <i>23</i>	195 <i>132</i>	0 <i>0</i>	0 <i>0</i>	216 <i>134</i>
Yellow perch	0.1035	235 <i>236</i>	92 <i>71</i>	9,222 <i>2,784</i>	1,953 <i>57</i>	11,502 <i>2,796</i>
Walleye	0.0000	0 <i>0</i>	0 <i>0</i>	0 <i>0</i>	0 <i>0</i>	0 <i>0</i>
Total Harvest	0.1470	309 <i>239</i>	575 <i>229</i>	13,500 <i>2,815</i>	0 <i>0</i>	14,384 <i>2,834</i>
Angler Hours		18,399 <i>2,324</i>	16,484 <i>2,983</i>	74,234 <i>4,307</i>	2,013 <i>927</i>	111,130 <i>5,731</i>

Table 8. Estimated harvest-rate (harvest per hour), harvest, and effort for the **STREAM FISHERY** with all survey areas combined for Wisconsin waters of Lake Michigan and Green Bay during 2020. Standard deviations are in italics.

Species	Harvest per hour	July	August	Sept/Oct	Nov/Dec	Season
Coho salmon	0.0061	0 <i>0</i>	0 <i>0</i>	988 <i>183</i>	0 <i>0</i>	988 <i>183</i>
Chinook salmon	0.1127	0 <i>0</i>	0 <i>0</i>	18,206 <i>1,634</i>	0 <i>0</i>	18,206 <i>1,634</i>
Rainbow trout	0.0003	0 <i>0</i>	0 <i>0</i>	41 <i>22</i>	0 <i>0</i>	41 <i>22</i>
Brown trout	0.0025	0 <i>0</i>	0 <i>0</i>	411 <i>276</i>	0 <i>0</i>	411 <i>276</i>
Brook trout	0.0000	0 <i>0</i>	0 <i>0</i>	0 <i>0</i>	0 <i>0</i>	0 <i>0</i>
Lake trout	0.0000	0 <i>0</i>	0 <i>0</i>	0 <i>0</i>	0 <i>0</i>	0 <i>0</i>
Northern pike	0.0006	0 <i>0</i>	0 <i>0</i>	89 <i>64</i>	0 <i>0</i>	89 <i>64</i>
White perch	0.0015	94 <i>83</i>	0 <i>0</i>	145 <i>135</i>	0 <i>0</i>	239 <i>158</i>
Smallmouth bass	0.0062	0 <i>0</i>	982 <i>0</i>	21 <i>15</i>	0 <i>0</i>	1,003 <i>15</i>
Yellow perch	0.0329	251 <i>278</i>	1,486 <i>661</i>	3,505 <i>1,398</i>	72 <i>56</i>	5,314 <i>1,572</i>
Walleye	0.0196	0 <i>0</i>	0 <i>0</i>	2,352 <i>1,107</i>	809 <i>0</i>	3,161 <i>1,107</i>
Total Harvest	0.1823	345 <i>290</i>	2,468 <i>661</i>	25,758 <i>2,446</i>	0 <i>0</i>	29,452 <i>2,551</i>
Angler Hours		5,016 <i>821</i>	8,703 <i>1,184</i>	144,942 <i>7,523</i>	2,933 <i>1,101</i>	161,594 <i>7,654</i>

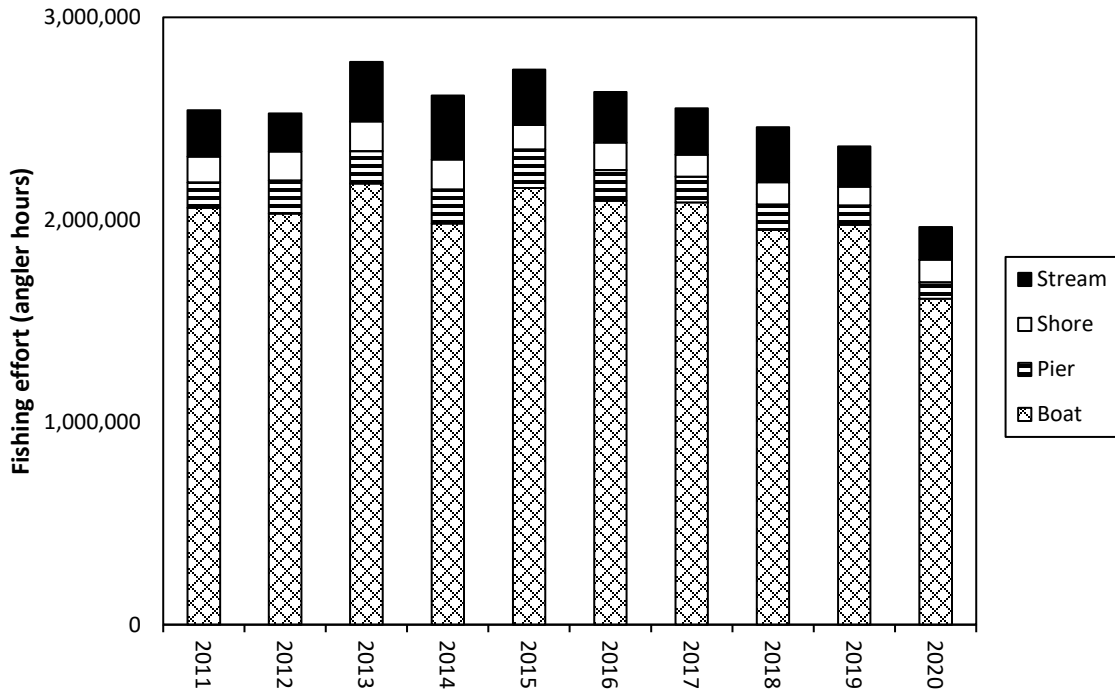


Figure 1. Fishing effort (angler hours) in Wisconsin waters of Lake Michigan and Green Bay from 2011 through 2020.
 *Note: Sport Fishing estimates for 2020 are for May – December only.

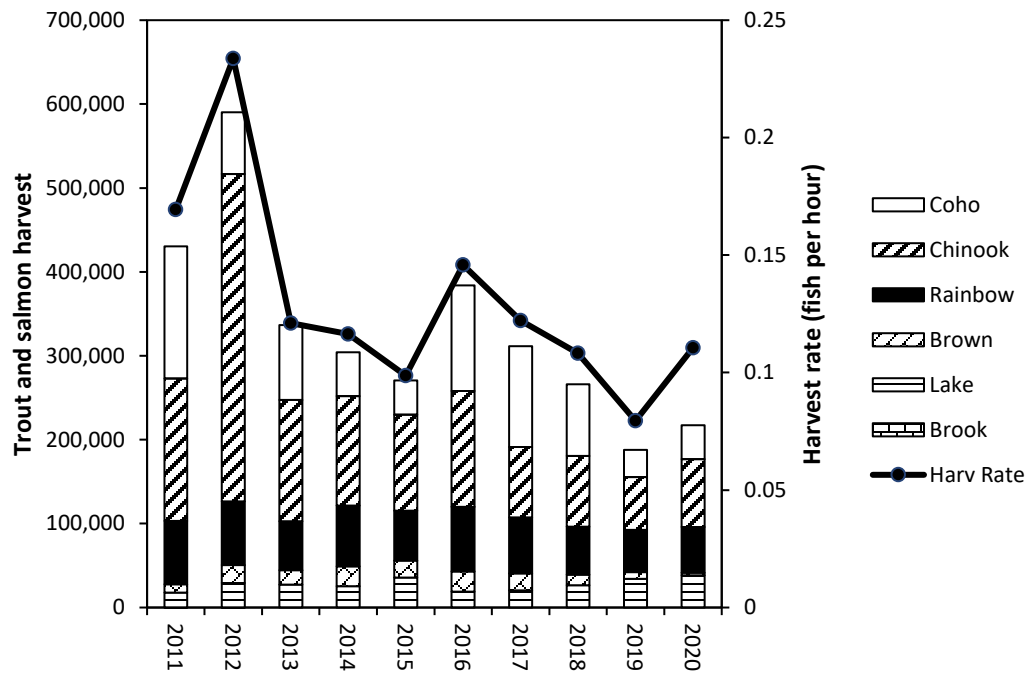


Figure 2. Trout and salmon harvest and harvest-rate from Wisconsin waters of Lake Michigan and Green Bay from 2011 through 2020. *Note: Sport Fishing estimates for 2020 are for May – December only.

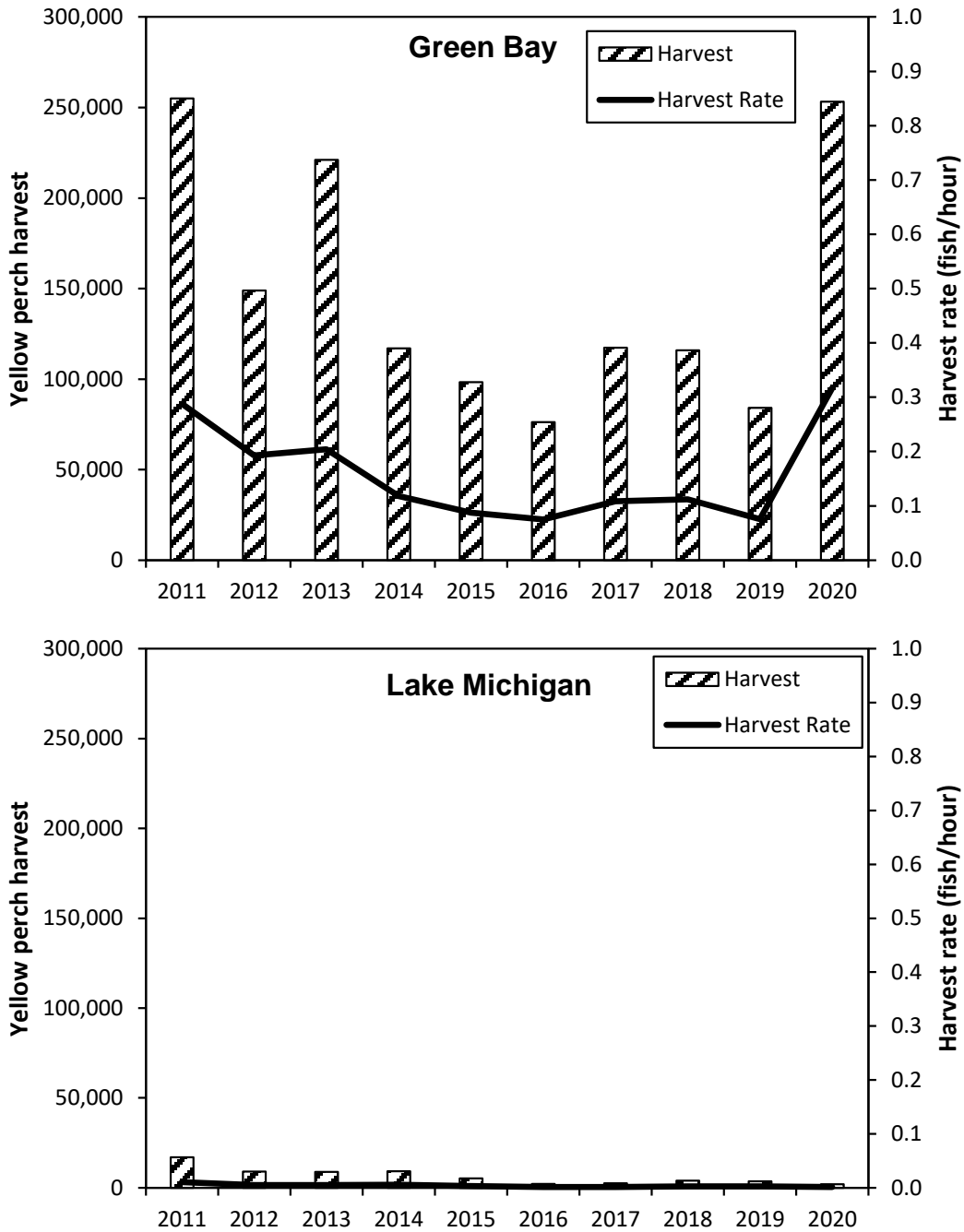


Figure 3. Yellow perch angler-harvest and harvest-rate from Wisconsin waters of Green Bay and Lake Michigan from 2011 through 2020. Note: Figure 3 reflects that some Door County sites represent Green Bay for yellow perch harvest statistics. *Note: Sport Fishing estimates for 2020 are for May – December only.