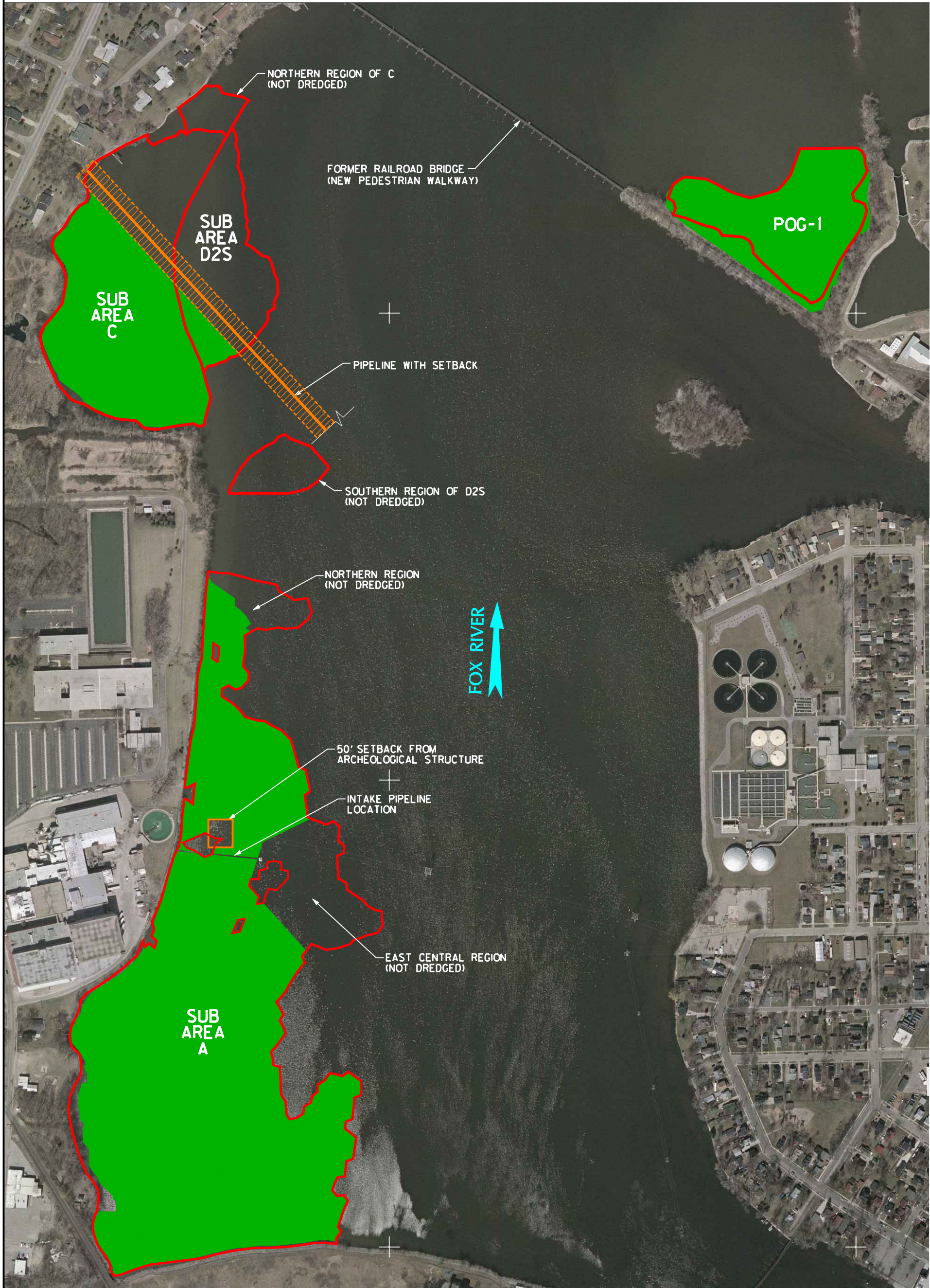


2,370,000 E

2,372,000 E



806,000 E

804,000 E

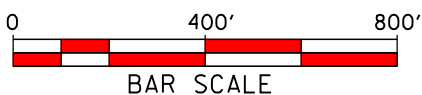
802,000 E

LEGEND

- 2005 ACTUAL REMOVAL LIMITS (≥95% TO TARGET ELEVATIONS, INCLUDING DOCUMENTED HIGH SUBGRADE)
- BODR PRE-DREDGE 1.0 PPM SEDIMENT BOUNDARY

NOTES:

1. THE HORIZONTAL CONTROL IS REFERENCED TO THE NAD83 WISCONSIN STATE PLANE COORDINATE SYSTEM (WISCONSIN SOUTHERN ZONE).
2. COLOR ORTHO PHOTO SUPPLIED BY WINNEBAGO COUNTY, WI. FLOWN IN APRIL 2003.



GW PARTNERS

FIGURE 3-4
LOWER FOX RIVER OUI
ACTUAL 2005 SUB-AREA DREDGE LIMITS

Date: FEBRUARY, 2006	Revision Date: DECEMBER, 2006	
Drawn By: JRB2	Checked By: DMR	Scope: 04G007