

# Winnebago County

## AQUATIC OCCURRENCES

### Animal

Red-necked Grebe, *Podiceps grisegena*, 1997  
 Broad-winged Skipper, *Poanes viator*, 2000  
 Slippershell Mussel, *Alasmidonta viridis*, 1977  
 Round Pigtoe, *Pleurobema sintoxia*, 1995  
 Banded Killifish, *Fundulus diaphanus*, 1974  
 Mulberry Wing, *Poanes massasoit*, 1991  
 Blanding's Turtle, *Emydoidea blandingii*, 2002  
 A Predaceous Diving Beetle, *Hydroporus vittatus*, 2000  
 Arctic Shrew, *Sorex arcticus*, 1999  
 Lake Sturgeon, *Acipenser fulvescens*, 1991  
 Lake Chubsucker, *Erimyzon sucetta*, 1979  
 Least Bittern, *Ixobrychus exilis*, 2000  
 Bald Eagle, *Haliaeetus leucocephalus*, 2008  
 Buckhorn, *Tritogonia verrucosa*, 2005  
 Striped Shiner, *Luxilus chrysocephalus*,  
 Black Tern, *Chlidonias niger*, 2001  
 Great Egret, *Ardea alba*, 2001  
 Plains Clubtail, *Gomphurus externus*, 1999  
 Caspian Tern, *Sterna caspia*, 1990  
 Wood Turtle, *Glyptemys insculpta*, 1948  
 American Bittern, *Botaurus lentiginosus*, 2001  
 Pugnose Shiner, *Notropis anogenus*, 1963  
 Cattle Egret, *Bubulcus ibis*, 1999  
 Common Moorhen, *Gallinula chloropus*, 1990  
 Osprey, *Pandion haliaetus*, 2008  
 Common Tern, *Sterna hirundo*, 2000  
 Forster's Tern, *Sterna forsteri*, 2000  
 Greater Redhorse, *Moxostoma valenciennesi*, 1974  
 Pugnose Minnow, *Opsopoeodus emiliae*, 1981  
 Western Grebe, *Aechmophorus occidentalis*, 1990  
 Black-crowned Night-heron, *Nycticorax nycticorax*, 2001

### Plants

Waxleaf Meadowrue, *Thalictrum revolutum*, 2000  
 Swamp Bedstraw, *Galium brevipes*, 1986  
 Slim-stem Small-reedgrass, *Calamagrostis stricta*, 1979  
 Prairie White-fringed Orchid, *Platanthera leucophaea*, 2008  
 Common Bog Arrow-grass, *Triglochin maritima*, 2000  
 Cuckooflower, *Cardamine pratensis*, 1999  
 Marsh Blazing Star, *Liatris spicata*, 2000  
 Bog Bluegrass, *Poa paludigena*, 1986  
 Small White Lady's-slipper, *Cypripedium candidum*, 2002

### Natural Communities

Floodplain Forest, Floodplain forest, 1999  
 Wet-mesic Prairie, Wet-mesic prairie, 2000  
 Southern Sedge Meadow, Southern sedge meadow, 1999  
 Emergent Marsh, Emergent marsh, 2000  
 Wet Prairie, Wet prairie, 1984  
 Emergent Marsh - Wild Rice, Emergent marsh - wild rice, 1999  
 Northern Sedge Meadow, Northern sedge meadow, 2000  
 Southern Hardwood Swamp, Southern hardwood swamp, 2001

## TERRESTRIAL OCCURRENCES

### Animal

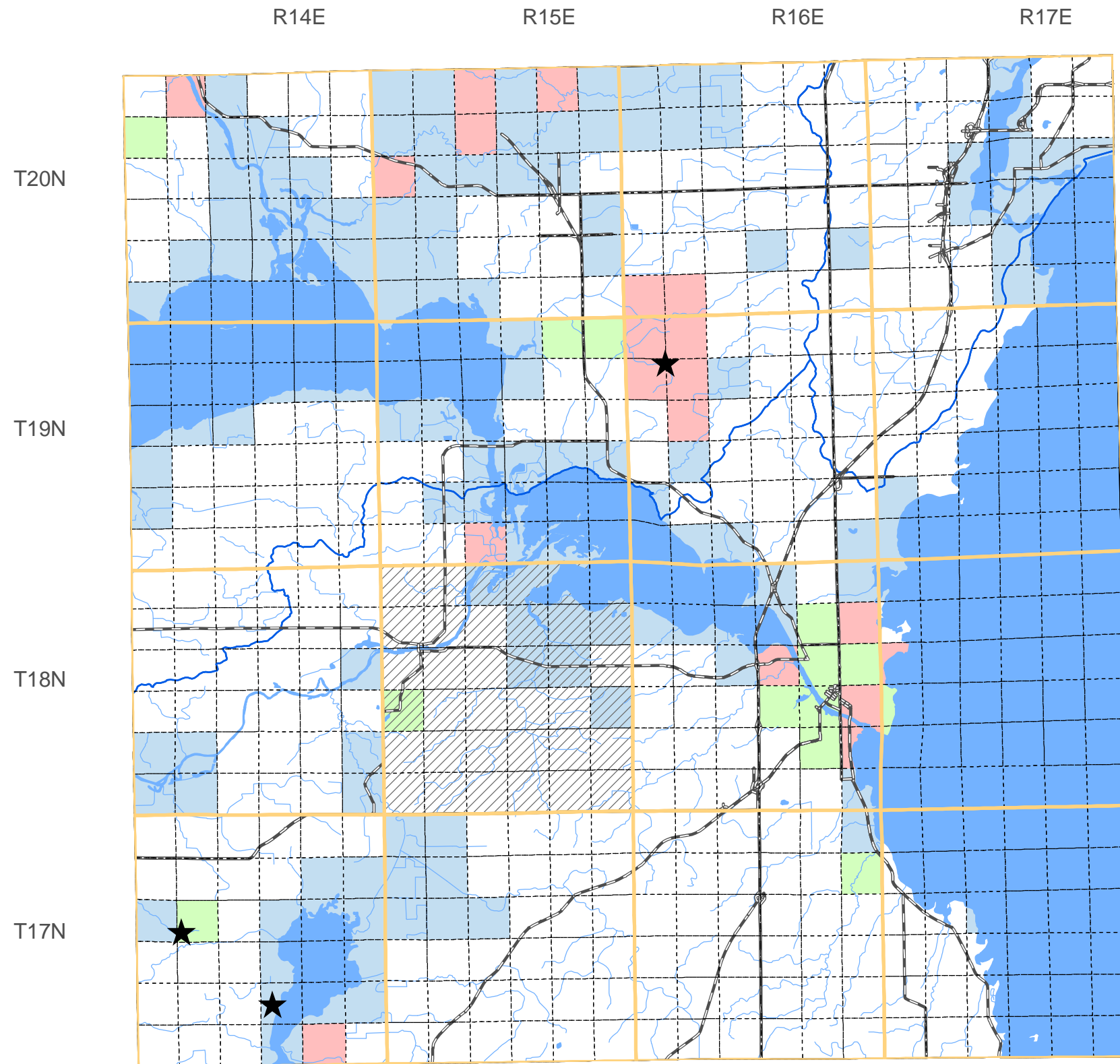
Bird Rookery, Bird Rookery, 1990  
 Migratory Bird Concentration Site, Migratory Bird Concentration Site, 2006  
 Gorgone Checker Spot, *Chlosyne gorgone*, 1991  
 Pygmy Shrew, *Sorex hoyi*, 1975  
 Peregrine Falcon, *Falco peregrinus*, 2009  
 Cerulean Warbler, *Dendroica cerulea*, 2000

### Plants

Narrow-leaved Vervain, *Verbena simplex*, 2005  
 Handsome Sedge, *Carex formosa*, 2001  
 Indian Cucumber-root, *Medeola virginiana*, 1992  
 Tall Coreopsis, *Coreopsis tripteris*, 2004  
 Hairy Wild-petunia, *Ruellia humilis*, 2005  
 Kentucky Coffee-tree, *Gymnocladus dioica*, 1993  
 Purple Milkweed, *Asclepias purpurascens*, 1941  
 Dwarf Milkweed, *Asclepias ovalifolia*, 2000

### Natural Communities

Oak Opening, Oak opening, 1987  
 Southern Dry-mesic Forest, Southern dry-mesic forest, 1979  
 Mesic Prairie, Mesic prairie, 1987  
 Northern Mesic Forest, Northern mesic forest, 1999  
 Northern Dry-mesic Forest, Northern dry-mesic forest, 1979



SPECIES and/or  
NATURAL COMMUNITY



Aquatic



Terrestrial



Both



Township  
Occurrences



Watershed  
Boundaries



State  
Natural Area



This map represents the known occurrences of rare species and natural communities that have been recorded in the Wisconsin Natural Heritage Inventory (NHI). Colored sections indicate the presence of one or more occurrences within that section. Hatched townships indicate one or more occurrences reported only at the township level. The date following the names above notes the most recent year the occurrence was recorded in the county.

Map generated using NHI data from: 09/15/2010  
 Copyright 2003, WDNR-Bureau of Endangered Resources  
 This map may not be reproduced without prior written permission.



ENDANGERED  
RESOURCES