

# Sheboygan County

## AQUATIC OCCURRENCES

### Animal

Broad-winged Skipper, *Poanes viator*, 2001  
 Slippershell Mussel, *Alasmidonta viridis*, 2009  
 American Bullfrog, *Lithobates catesbeianus*, 2009  
 A Predaceous Diving Beetle, *Lioporeus triangularis*, 1996  
 Blanding's Turtle, *Emydoidea blandingii*, 2005  
 Butler's Gartersnake, *Thamnophis butleri*, 2009  
 Mulberry Wing, *Poanes massasoit*, 2001  
 Banded Killifish, *Fundulus diaphanus*, 1979  
 Lake Chubsucker, *Erimyzon sucetta*, 1979  
 Ellipse, *Venustaconcha ellipsiformis*, 1999  
 Piping Plover, *Charadrius melodus*, 1937  
 Bald Eagle, *Haliaeetus leucocephalus*, 2008  
 Black Tern, *Chlidonias niger*, 1989  
 Striped Shiner, *Luxilus chrysocephalus*, 1978  
 Swamp Metalmark, *Calephelis muticum*, 2010  
 Queensnake, *Regina septemvittata*, 1992  
 Rainbow Shell, *Villosa iris*, 1995  
 Four-toed Salamander, *Hemidactylium scutatum*, 2009  
 Unicorn Clubtail, *Argemphus villosipes*, 1989  
 Pugnose Shiner, *Notropis anogenus*, 1978  
 Red-shouldered Hawk, *Buteo lineatus*, 2009  
 Least Darter, *Etheostoma microperca*, 2009  
 Osprey, *Pandion haliaetus*, 2008  
 Black-crowned Night-heron, *Nycticorax nycticorax*, 1937  
 Eastern Ribbonsnake, *Thamnophis sauritus*, 2009  
 Seaside Grasshopper, *Trimerotropis maritima*, 1999  
 Greater Redhorse, *Moxostoma valenciennesi*, 2007

### Plants

Ram's-head Lady's-slipper, *Cypripedium arietinum*, 1915  
 Waxleaf Meadowrue, *Thalictrum revolutum*, 1971  
 Marsh Valerian, *Valeriana stichensis* ssp. *uliginosa*, 2000  
 Swamp Bedstraw, *Galium brevipes*, 1961  
 Seaside Crowfoot, *Ranunculus cymbalaria*, 1909  
 Northern Yellow Lady's-slipper, *Cypripedium parviflorum* var. *makasin*, 2010  
 Leafy White Orchis, *Platanthera dilatata*, 1917  
 Swamp-pink, *Arethusa bulbosa*, 1917  
 White Adder's-mouth, *Malaxis monophyllos* var. *brachypoda*, 1915  
 Showy Lady's-slipper, *Cypripedium reginae*, 2009  
 Slim-stem Small-reedgrass, *Calamagrostis stricta*, 1978  
 Slender Bog Arrow-grass, *Triglochin palustris*, 1987  
 Tufted Hairgrass, *Deschampsia cespitosa*, 1965  
 American Sea-rocket, *Cakile lacustris*, 1986  
 Common Bog Arrow-grass, *Triglochin maritima*, 1934  
 Many-headed Sedge, *Carex sychnocephala*, 1995  
 Variegated Horsetail, *Equisetum variegatum*, 1987  
 Cuckooflower, *Cardamine pratensis*, 2009

### Natural Communities

Bog Relict, Bog relict, 2009  
 Hardwood Swamp, Hardwood swamp, 2009  
 Alder Thicket, Alder thicket, 1976  
 Open Bog, Open bog, 1979  
 Springs and Spring Runs, Soft, Springs and spring runs, soft, 1978  
 Lake-Deep, Hard, Drainage, Lake-deep, hard, drainage, 1979  
 Emergent Marsh, Emergent marsh, 2009  
 Floodplain Forest, Floodplain forest, 1978  
 Interdunal Wetland, Interdunal wetland, 2001  
 Southern Sedge Meadow, Southern sedge meadow, 1978  
 Spring Pond, Spring pond, 1978  
 Lake-Shallow, Hard, Seepage, Lake-shallow, hard, seepage, 2009  
 Northern Wet Forest, Northern wet forest, 1979  
 Calcareous Fen, Calcareous fen, 2006  
 Shrub-carr, Shrub-carr, 2009  
 Southern Tamarack Swamp (Rich), Southern tamarack swamp (rich), 2009  
 Springs and Spring Runs, Hard, Springs and spring runs, hard, 2009  
 Great Lakes Ridge and Swale, Great Lakes Ridge and Swale, 1981  
 Great Lakes Beach, Great lakes beach, 2001  
 Northern Sedge Meadow, Northern sedge meadow, 1978  
 Stream-Fast, Hard, Cold, Stream-fast, hard, cold, 2004  
 Lake-Soft Bog, Lake-soft bog, 1976  
 Lake-Shallow, Hard, Drainage, Lake-shallow, hard, drainage, 2009  
 Northern Wet-mesic Forest, Northern wet-mesic forest, 2006  
 Great Lakes Dune, Great lakes dune, 2006

## TERRESTRIAL OCCURRENCES

### Animal

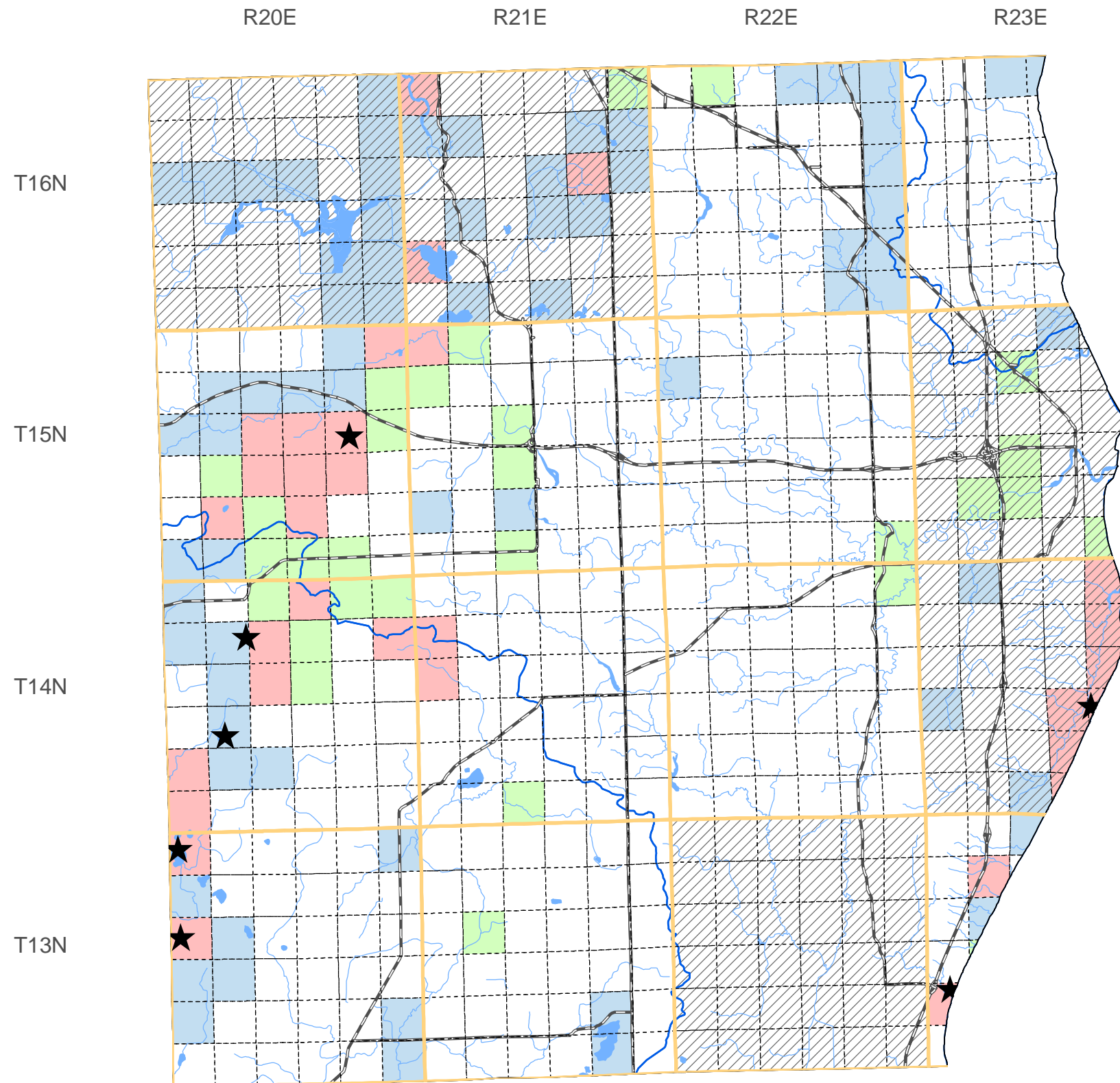
Yellow-billed Cuckoo, *Coccyzus americanus*, 2008  
 Phyllira Tiger Moth, *Grammia phyllira*, 1992  
 Kentucky Warbler, *Oporornis formosus*, 2009  
 Acadian Flycatcher, *Empidonax virescens*, 2009  
 Club-homed Grasshopper, *Aeropedellus clavatus*, 2008  
 Migratory Bird Concentration Site, Migratory Bird Concentration Site, 2006  
 Cherrystone Drop, *Hesperosia occulta*, 1988  
 Herp Hibernaculum, Herp Hibernaculum, 2010  
 Barn Owl, *Tyto alba*, 1982  
 Northern Goshawk, *Accipiter gentilis*, 1999  
 Cerulean Warbler, *Dendroica cerulea*, 2007  
 Peregrine Falcon, *Falco peregrinus*, 2009  
 Hooded Warbler, *Wilsonia citrina*, 2009

### Plants

One-flowered Broomrape, *Orobanche uniflora*, 1934  
 Narrow-leaved Vervain, *Verbena simplex*, 1964  
 Indian Cucumber-root, *Medeola virginiana*, 1942  
 Sand Reedgrass, *Calamovilfa longifolia* var. *magna*, 2000  
 Snow Trillium, *Trillium nivale*, 1994  
 Seaside Spurge, *Euphorbia polygonifolia*, 1986  
 Hairy Beardtongue, *Penstemon hirsutus*, 1962  
 Yellow Evening Primrose, *Calylophus serrulatus*, 1940  
 Yellow Gentian, *Gentiana alba*, 2009  
 Dune Goldenrod, *Solidago simplex* var. *gillmanii*, 1978  
 Richardson Sedge, *Carex richardsonii*, 1923  
 Clustered Broomrape, *Orobanche fasciculata*, 1979  
 Small Skullcap, *Scutellaria parvula* var. *parvula*, 1904  
 Christmas Fern, *Polystichum acrostichoides*, 1994  
 Purple False Oats, *Trisetum melicoides*, 1879  
 Dragon Wormwood, *Artemisia dracunculoides*, 1940  
 Hooker Orchis, *Platanthera hookeri*, 1916  
 Fragrant Sumac, *Rhus aromatica*, 1972  
 Forked Aster, *Aster furcatus*, 1998  
 Large Roundleaf Orchid, *Platanthera orbiculata*, 1915  
 Thickspike, *Elymus lanceolatus* ssp. *psammophilus*, 1984  
 Dune Thistle, *Cirsium pitcheri*, 2008  
 Prairie Duneort, *Botrychium campestre*, 1985  
 American Gromwell, *Lithospermum latifolium*, 1994  
 Cooper's Milkvech, *Astragalus neglectus*, 1904  
 Early Anemone, *Anemone multifida* var. *hudsoniana*, 1918  
 Marbleseed, *Onosmodium molle*, 1919  
 Long-spur Violet, *Viola rostrata*, 1959

### Natural Communities

Southern Dry-mesic Forest, Southern dry-mesic forest, 2009  
 Northern Mesic Forest, Northern mesic forest, 1976  
 Southern Mesic Forest, Southern mesic forest, 2009  
 Northern Dry-mesic Forest, Northern dry-mesic forest, 2006



SPECIES and/or  
NATURAL COMMUNITY



Aquatic



Terrestrial



Both



Township  
Occurrences



Watershed  
Boundaries



State  
Natural Area



This map represents the known occurrences of rare species and natural communities that have been recorded in the Wisconsin Natural Heritage Inventory (NHI). Colored sections indicate the presence of one or more occurrences within that section. Hatched townships indicate one or more occurrences reported only at the township level. The date following the names above notes the most recent year the occurrence was recorded in the county.

Map generated using NHI data from: 09/15/2010  
 Copyright 2003, WDNR-Bureau of Endangered Resources  
 This map may not be reproduced without prior written permission.



ENDANGERED  
RESOURCES