

# Manitowoc County

## AQUATIC OCCURRENCES

### Animal

Redfin Shiner, *Lythrurus umbratilis*, 1956  
 Northern Cricket Frog, *Acris crepitans*, 1947  
 Broad-winged Skipper, *Poanes viator*, 2000  
 Slippershell Mussel, *Alasmidonta viridis*, 1997  
 Banded Killifish, *Fundulus diaphanus*, 1982  
 A Noctuid Moth, *Copablepharon michiganensis*, 1992  
 Blanding's Turtle, *Emydoidea blandingii*, 1998  
 Lake Chubsucker, *Erimyzon succetta*, 1978  
 Wilson's Phalarope, *Phalaropus tricolor*, 1999  
 Ellipse, *Venustaconcha ellipsiformis*, 1997  
 Beach-dune Tiger Beetle, *Cicindela hirticollis rhodensis*, 2000  
 Bald Eagle, *Haliaeetus leucocephalus*, 2008  
 Elktoe, *Alasmidonta marginata*, 1996  
 Red-shouldered Hawk, *Buteo lineatus*, 2009  
 American Bittern, *Botaurus lentiginosus*, 2009  
 Monkeyface, *Quadrula metanevra*, 1996  
 Four-toed Salamander, *Hemidactylium scutatum*, 1995  
 Osprey, *Pandion haliaetus*, 2008  
 Redside Dace, *Clinostomus elongatus*, 1994  
 Greater Redhorse, *Moxostoma valenciennesi*, 1996  
 Black-crowned Night-heron, *Nycticorax nycticorax*, 2009

### Plants

Sticky False-asphodel, *Tofieldia glutinosa*, 1911  
 Seaside Crowfoot, *Ranunculus cymbalaria*, 1913  
 Northern Yellow Lady's-slipper, *Cypripedium parviflorum var. makasin*, 1911  
 Swamp-pink, *Arethusa bulbosa*, 1929  
 White Adder's-mouth, *Malaxis monophyllos var. brachypoda*,  
 Showy Lady's-slipper, *Cypripedium reginae*, 1885  
 Shore Sedge, *Carex lenticularis*,  
 American Sea-rocket, *Cakile lacustris*, 2008  
 Slim-stem Small-reedgrass, *Calamagrostis stricta*, 2001  
 Slender Bog Arrow-grass, *Triglochin palustris*, 2001  
 Common Bog Arrow-grass, *Triglochin maritima*, 1978  
 Many-headed Sedge, *Carex sychnocephala*, 2001  
 Cuckooflower, *Cardamine pratensis*, 1978  
 Variegated Horsetail, *Equisetum variegatum*, 1959

### Natural Communities

Hardwood Swamp, Hardwood swamp, 2006  
 Open Bog, Open bog, 1978  
 Interdunal Wetland, Interdunal wetland, 2006  
 Emergent Marsh, Emergent marsh, 1976  
 Clay Seepage Bluff, Clay seepage bluff, 2001  
 Floodplain Forest, Floodplain forest, 1978  
 Southern Sedge Meadow, Southern sedge meadow, 2006  
 Lake-Deep, Hard Seepage, Lake-deep, hard seepage, 1976  
 Northern Wet Forest, Northern wet forest, 1979  
 Lake-Hard Bog, Lake-hard bog, 1977  
 Great Lakes Beach, Great lakes beach, 2006  
 Great Lakes Ridge and Swale, Great Lakes Ridge and Swale, 2006  
 Northern Wet-mesic Forest, Northern wet-mesic forest, 2006  
 Lake-Soft Bog, Lake-soft bog, 1978  
 Northern Sedge Meadow, Northern sedge meadow, 2006  
 Great Lakes Dune, Great lakes dune, 2006

## TERRESTRIAL OCCURRENCES

### Animal

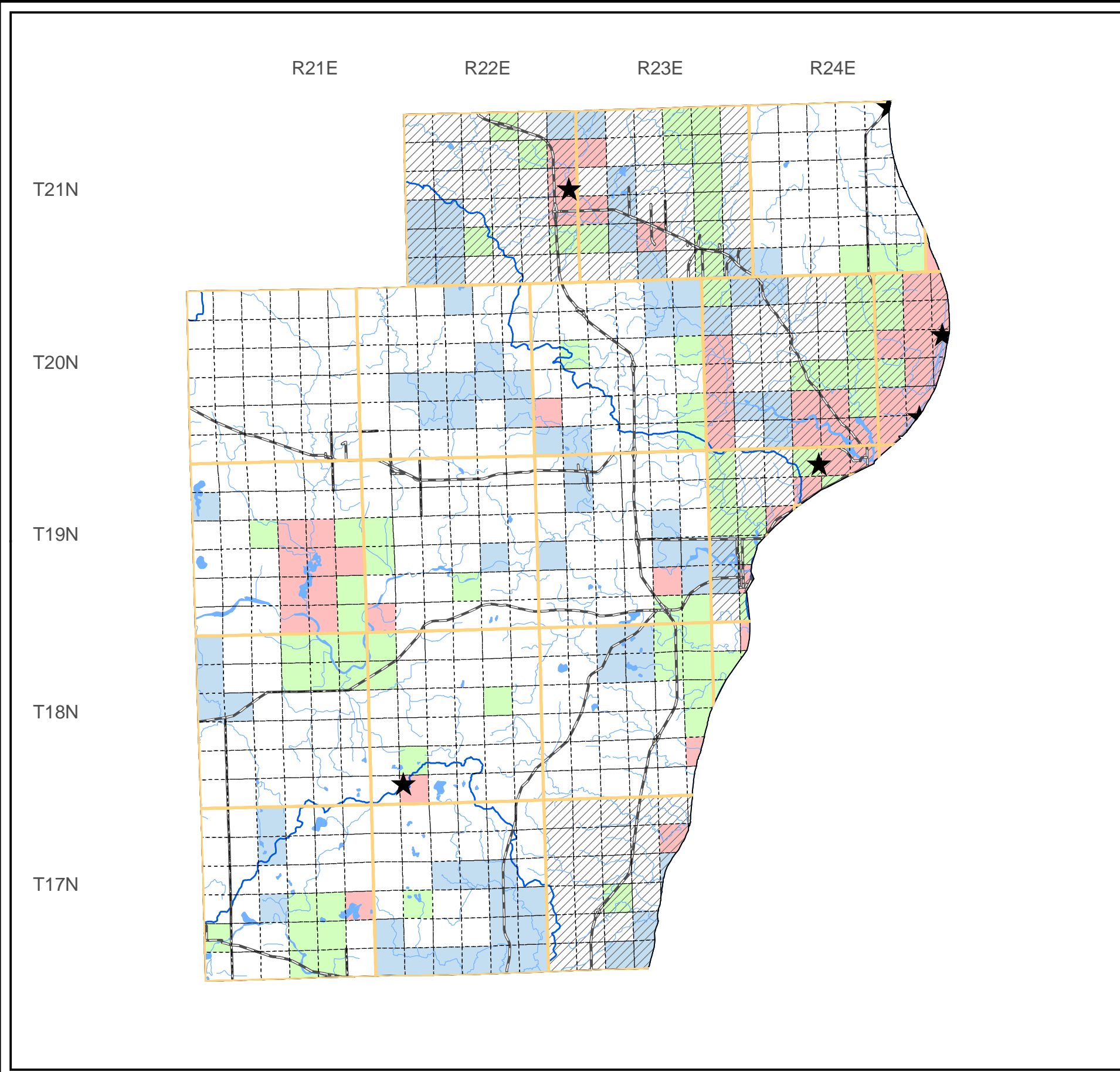
Upland Sandpiper, *Bartramia longicauda*, 1997  
 Phyllira Tiger Moth, *Grammia phyllira*, 1992  
 Black Striate, *Striatura ferrea*, 1998  
 Western Meadowlark, *Sturnella neglecta*, 1997  
 Midwest Pleistocene Vertigo, *Vertigo hubrichti*, 1996  
 Bird Rookery, *Bird Rookery*, 2010  
 Black-throated Blue Warbler, *Dendroica caerulescens*, 2006  
 Henslow's Sparrow, *Ammodramus henslowii*, 1984  
 Acadian Flycatcher, *Empidonax virescens*, 2001  
 Bat Hibernaculum, *Bat Hibernaculum*, 1990  
 Migratory Bird Concentration Site, *Migratory Bird Concentration Site*, 2006  
 Dickcissel, *Spiza americana*, 1995  
 Tapered Vertigo, *Vertigo elatior*, 1997  
 Transparent Vitrina Snail, *Vitrina angelicae*, 2002  
 Cherrystone Drop, *Hendersonia occulta*, 1997  
 Barn Owl, *Tyto alba*, 1975  
 Canada Warbler, *Wilsonia canadensis*, 2008  
 Northern Ring-necked Snake, *Diadophis punctatus edwardsii*, 1998  
 Cerulean Warbler, *Dendroica cerulea*, 1988  
 Hooded Warbler, *Wilsonia citrina*, 2006  
 Pygmy Shrew, *Sorex hoyi*, 1987  
 Peregrine Falcon, *Falco peregrinus*, 2009

### Plants

Bird's-eye Primrose, *Primula mistassinica*, 1884  
 Indian Cucumber-root, *Medeola virginiana*, 2006  
 Snow Trillium, *Trillium nivale*, 1993  
 Glade Fern, *Diplazium pycnocarpon*, 1900  
 Sand Reedgrass, *Calamovilfa longifolia var. magna*, 2008  
 Seaside Spurge, *Euphorbia polygonifolia*, 2001  
 Sand Dune Willow, *Salix cordata*, 2008  
 Clustered Broomrape, *Orobanche fasciculata*, 1979  
 Climbing Fumitory, *Adlumia fungosa*, 1977  
 Twinleaf, *Jeffersonia diphylla*, 1994  
 Putty Root, *Aplectrum hyemale*, 1978  
 Dragon Wormwood, *Artemisia dracunculus*, 1913  
 Pale Beardtongue, *Penstemon pallidus*, 1908  
 Dune Thistle, *Cirsium pitcheri*, 2009  
 American Gromwell, *Lithospermum latifolium*, 1994  
 Long-spur Violet, *Viola rostrata*, 1918

### Natural Communities

Southern Dry-mesic Forest, Southern dry-mesic forest, 1978  
 Northern Mesic Forest, Northern mesic forest, 1978  
 Moist Cliff, Moist cliff, 1977  
 Southern Mesic Forest, Southern mesic forest, 1988  
 Northern Dry-mesic Forest, Northern dry-mesic forest, 1976



SPECIES and/or NATURAL COMMUNITY | Aquatic | Terrestrial | Both | Township Occurrences | Watershed Boundaries | State Natural Area



This map represents the known occurrences of rare species and natural communities that have been recorded in the Wisconsin Natural Heritage Inventory (NHI). Colored sections indicate the presence of one or more occurrences within that section. Hatched townships indicate one or more occurrences reported only at the township level. The date following the names above notes the most recent year the occurrence was recorded in the county.

Map generated using NHI data from: 09/15/2010  
 Copyright 2003, WDNR-Bureau of Endangered Resources  
 This map may not be reproduced without prior written permission.

