

Ozaukee County

AQUATIC OCCURRENCES

Animal

Northern Cricket Frog, *Acris crepitans*, 1987
 American Bullfrog, *Lithobates catesbeianus*, 1987
 An Owllet Moth, *Macrochilo bivittata*, 1963
 Broad-winged Skipper, *Poanes viator*, 1992
 Redfin Shiner, *Lythrurus umbratilis*, 1995
 Butler's Gartersnake, *Thamnophis butleri*, 2008
 Mulberry Wing, *Poanes massasoit*, 2001
 Blanding's Turtle, *Emydoidea blandingii*, 2010
 Northern Pintail, *Anas acuta*, 1995
 Banded Killifish, *Fundulus diaphanus*, 1967
 Pickerel Frog, *Lithobates palustris*, 1986
 Double-striped Bluet, *Enallagma basidens*, 2002
 Pitcher Plant Moth, *Exyra fax*, 1990
 American Eel, *Anguilla rostrata*, 1910
 Least Bittern, *Ixobrychus exilis*, 1998
 Warpaint Emerald, *Somatochlora incurvata*, 1993
 Striped Shiner, *Luxilus chrysocephalus*, 1979
 Bald Eagle, *Haliaeetus leucocephalus*, 2008
 Fragile Forktail, *Ischnura posita*, 2002
 Queensnake, *Regina septemvittata*, 1928
 Swamp Metalmark, *Calephelis muticum*, 2009
 Midwestern Fen Buckmoth, *Hemileuca sp. 3*, 2002
 Rainbow Shell, *Villosa iris*, 2009
 Prairie Crayfish, *Procambarus gracilis*, 2002
 Slaty Skimmer, *Libellula incesta*, 1993
 Hine's Emerald, *Somatochlora hineana*, 2003
 Red-shouldered Hawk, *Buteo lineatus*, 1981
 Common Moorhen, *Gallinula chloropus*, 1998
 Least Darter, *Etheostoma microperca*, 1967
 Osprey, *Pandion haliaetus*, 2008
 Robust Dubiraphian Riffle Beetle, *Dubiraphia robusta*, 1994
 Longear Sunfish, *Lepomis megalotis*, 1993
 Greater Redhorse, *Moxostoma valenciennesi*, 2007

Plants

Sticky False-asphodel, *Tofieldia glutinosa*, 2002
 Waxleaf Meadowrue, *Thalictrum revolutum*, 1976
 Ram's-head Lady's-slipper, *Cypripedium arietinum*, 1986
 Northern Bog Sedge, *Carex gynocrates*, 1996
 Northern Yellow Lady's-slipper, *Cypripedium parviflorum var. makasin*, 2004
 Capitate Spikerush, *Eleocharis olivacea*, 1934
 Swamp-pink, *Arethusa bulbosa*, 1991
 Leafy White Orchis, *Platanthera dilatata*, 2001
 Round-leaved Orchis, *Amerorchis rotundifolia*, 1935
 White Adder's-mouth, *Malaxis monophyllos var. brachypoda*, 1991
 Few-flower Spikerush, *Eleocharis quinqueflora*, 1934
 Showy Lady's-slipper, *Cypripedium reginae*, 2001
 Prairie White-fringed Orchid, *Platanthera leucophaea*, 2008
 Slender Bog Arrow-grass, *Triglochin palustris*, 1941
 American Sea-rocket, *Cakile lacustris*, 2000
 Common Bog Arrow-grass, *Triglochin maritima*, 2001
 Livid Sedge, *Carex livida var. radicaulis*, 1996
 Sparse-flowered Sedge, *Carex tenuiflora*, 1999
 Variegated Horsetail, *Equisetum variegatum*, 1991
 Sweet-scented Indian-plantain, *Cacalia suaveolens*, 1996
 Slenderleaf Sundew, *Drosera linearis*, 1990
 Cuckooflower, *Cardamine pratensis*, 2000
 Heart-leaved Plantain, *Plantago cordata*, 2001

Natural Communities

Alder Thicket, Alder thicket, 1989
 Hardwood Swamp, Hardwood swamp, 1998
 Bog Relict, Bog relict, 1993
 Emergent Marsh, Emergent marsh, 1996
 Floodplain Forest, Floodplain forest, 1998
 Ephemeral Pond, Ephemeral pond, 1985
 Southern Sedge Meadow, Southern sedge meadow, 1989
 Lake-Shallow, Hard, Seepage, Lake-shallow, hard, seepage, 1991
 Northern Wet Forest, Northern wet forest, 1991
 Patterned Peatland, Patterned peatland, 2005
 Southern Tamarack Swamp (Rich), Southern tamarack swamp (rich), 1995
 Shrub-carr, Shrub-carr, 2004
 Lake-Hard Bog, Lake-hard bog, 1991
 Lake-Shallow, Hard, Drainage, Lake-shallow, hard, drainage, 1985
 Northern Wet-mesic Forest, Northern wet-mesic forest, 2004
 Stream-Fast, Hard, Cold, Stream-fast, hard, cold, 1985
 Black Spruce Swamp, Black spruce swamp, 2000
 Poor Fen, Poor fen, 1991
 Southern Hardwood Swamp, Southern hardwood swamp, 2001

TERRESTRIAL OCCURRENCES

Animal

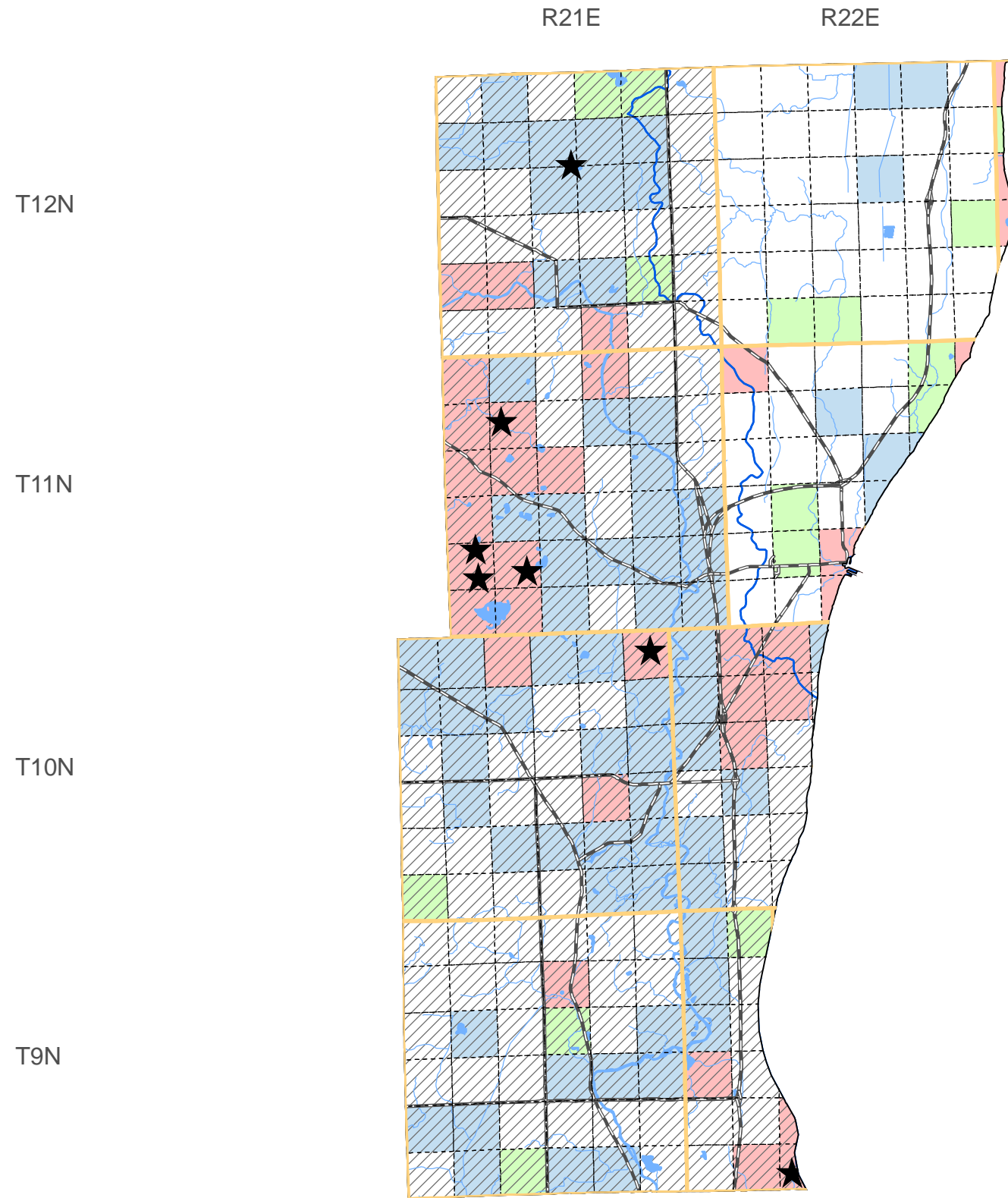
Upland Sandpiper, *Bartramia longicauda*, 1999
 Acadian Flycatcher, *Empidonax virescens*, 1999
 Bird Rookery, Bird Rookery, 2000
 Western Meadowlark, *Sturnella neglecta*, 1999
 Dickcissel, *Spiza americana*, 1999
 Migratory Bird Concentration Site, Migratory Bird Concentration Site, 2006
 Loggerhead Shrike, *Lanius ludovicianus*, 1989
 Cherry-stone Drop, *Hendersonia occulta*, 1998
 Tapered Vertigo, *Vertigo elatior*, 2001
 Barn Owl, *Tyto alba*, 1980
 Regal Frillary, *Speyeria idalia*, 1987
 Oval Vallonia, *Vallonia excentrica*, 1996
 Northern Ring-necked Snake, *Diadophis punctatus edwardsii*, 1987
 Peregrine Falcon, *Falco peregrinus*, 2009

Plants

Handsome Sedge, *Carex formosa*, 1988
 Reflexed Trillium, *Trillium recurvatum*, 1999
 Seaside Spurge, *Euphorbia polygonifolia*, 1960
 Water-ash, *Ptelea trifoliata*, 1912
 Snow Trillium, *Trillium nivale*, 2001
 Chinquapin Oak, *Quercus muehlenbergii*, 2001
 Clustered Broomrape, *Orobanche fasciculata*, 1935
 Giant Pinedrops, *Pterospora andromedea*, 1979
 Hairy Beardtongue, *Fenestron hisutus*, 1967
 Twinleaf, *Jeffersonia diphylla*, 1993
 Autumn Coral-root, *Corallorhiza odontorhiza*, 1932
 Hooker Orchis, *Platanthera hookeri*, 1938
 Forked Aster, *Aster furcatus*, 2005
 Large Roundleaf Orchid, *Platanthera orbiculata*, 1928
 Thicketspike, *Elymus lanceolatus ssp. psammophilus*, 1979
 Smooth Black-haw, *Viburnum prunifolium*, 1963
 American Gromwell, *Lithospermum latifolium*, 2004
 Marbleseed, *Onosmodium molle*, 1908

Natural Communities

Southern Dry-mesic Forest, Southern dry-mesic forest, 2000
 Northern Mesic Forest, Northern mesic forest, 2004
 Southern Mesic Forest, Southern mesic forest, 2002
 Northern Dry-mesic Forest, Northern dry-mesic forest, 2000



SPECIES and/or
NATURAL COMMUNITY



Aquatic



Terrestrial



Both



Township
Occurrences



Watershed
Boundaries



State
Natural Area



This map represents the known occurrences of rare species and natural communities that have been recorded in the Wisconsin Natural Heritage Inventory (NHI). Colored sections indicate the presence of one or more occurrences within that section. Hatched townships indicate one or more occurrences reported only at the township level. The date following the names above notes the most recent year the occurrence was recorded in the county.



ENDANGERED
RESOURCES

Map generated using NHI data from: 09/15/2010
 Copyright 2003, WDNR-Bureau of Endangered Resources
 This map may not be reproduced without prior written permission.