

Marquette County

AQUATIC OCCURRENCES

Animal

Northern Cricket Frog, *Acris crepitans*, 1988
 American Bullfrog, *Lithobates catesbeianus*, 1984
 An Owllet Moth, *Macrochilo bivittata*, 1997
 Blanding's Turtle, *Emydoidea blandingii*, 2008
 Round Pigtoe, *Pleurobema sintoxia*, 1997
 Banded Killifish, *Fundulus diaphanus*, 1995
 Mulberry Worm, *Ponera massasoit*, 1999
 Lake Chubsucker, *Erimyzon succetta*, 1980
 Yellow Rail, *Coturnicops noveboracensis*, 2005
 Weed Shiner, *Notropis texanus*, 1925
 Spatterdock Darner, *Rhionaeschna mutata*, 1989
 Black Tern, *Chlidonias niger*, 1983
 Bald Eagle, *Haliaeetus leucocephalus*, 2008
 King Rail, *Rallus elegans*, 2006
 Swamp Metalmark, *Calephelis muticum*, 2001
 Elktoe, *Alasmidonta marginata*, 1997
 Pugnose Shiner, *Notropis anogenus*, 1978
 Red-shouldered Hawk, *Buteo lineatus*, 1975
 Midwestern Fen Buckmoth, *Hemileuca sp. 3*, 1997
 American Bittern, *Botaurus lentiginosus*, 2003
 Citrine Forktail, *Ischnura hastata*, 1989
 Sylvan Hygrotes Diving Beetle, *Hygrotes sylvanus*, 1990
 Forster's Tern, *Sterna forsteri*, 1977
 Least Darter, *Etheostoma microperca*, 1925
 Osprey, *Pandion haliaetus*, 2008
 Greater Redhorse, *Moxostoma valenciennesi*, 1988
 Black-crowned Night-heron, *Nycticorax nycticorax*, 1980

Plants

Sticky False-asphodel, *Tofieldia glutinosa*, 1969
 Grassleaf Rush, *Juncus marginatus*, 1958
 Yellow Screwstem, *Bartonia virginica*, 2005
 Northern Yellow Lady's-slipper, *Cypripedium parviflorum var. makasin*, 1986
 Capitlate Spikerush, *Eleocharis olivacea*, 1962
 Crossleaf Milkwort, *Polygala cruciata*, 1990
 Dwarf Umbrella-sedge, *Fuirena pumila*, 1992
 Virginia Meadow-beauty, *Rhexia virginica*, 1995
 Downy Willow-herb, *Epilobium strictum*, 1992
 Hidden-fruited Bladderwort, *Utricularia geminiscapa*, 1969
 Showy Lady's-slipper, *Cypripedium reginae*, 1983
 Common Bog Arrow-grass, *Triglochin maritima*, 2005
 Low Nutrush, *Scleria verticillata*, 1974
 Adder's-tongue, *Ophioglossum pusillum*, 1951
 Tufted Hairgrass, *Deschampsia cespitosa*, 1962
 Northeastern Bladderwort, *Utricularia resupinata*, 1976
 Lvid Sedge, *Carex livida var. radicaulis*, 2005
 Robbins' Spikerush, *Eleocharis robbinsii*, 1990
 Lesser Fringed Gentian, *Gentianopsis procera*, 1987
 Whip Nutrush, *Scleria triglomerata*, 1941
 Sweet-scented Indian-plantain, *Cacalia suaveolens*, 2002
 Cuckooflower, *Cardamine pratensis*, 1971
 Slenderleaf Sundew, *Drosera linearis*, 2005
 Long-beaked Baldrush, *Psilocarya scirpoides*, 1998
 Small White Lady's-slipper, *Cypripedium candidum*, 2003
 Bog Bluegrass, *Poa paludigena*, 1987
 Purple Bladderwort, *Utricularia purpurea*, 1993
 Alpine Cotton-grass, *Eriophorum alpinum*, 2005
 Engelmann Spike-rush, *Eleocharis engelmannii*, 2001

Natural Communities

Alder Thicket, Alder thicket, 1978
 Open Bog, Open bog, 1978
 Emergent Marsh, Emergent marsh, 1979
 Floodplain Forest, Floodplain forest, 2002
 Lake-Deep, Hard, Drainage, Lake-deep, hard, drainage, 1977
 Wet Prairie, Wet prairie, 1978
 Wet-mesic Prairie, Wet-mesic prairie, 1978
 Southern Sedge Meadow, Southern sedge meadow, 2005
 Lake-Shallow, Hard, Seepage, Lake-shallow, hard, seepage, 1978
 Coastal Plain Marsh, Coastal plain marsh, 1977
 Northern Wet Forest, Northern wet forest, 1985
 Calcareous Fen, Calcareous fen, 1990
 Southern Tamarack Swamp (Rich), Southern tamarack swamp (rich), 1987
 Springs and Spring Runs, Hard, Springs and spring runs, hard, 1978
 Shrub-carr, Shrub-carr, 2005
 Stream-Fast, Hard, Cold, Stream-fast, hard, cold, 1984
 Lake-Shallow, Hard, Drainage, Lake-shallow, hard, drainage, 1979
 Northern Sedge Meadow, Northern sedge meadow, 1984
 Lake-Shallow, Soft, Seepage, Lake-shallow, soft, seepage, 1979

TERRESTRIAL OCCURRENCES

Animal

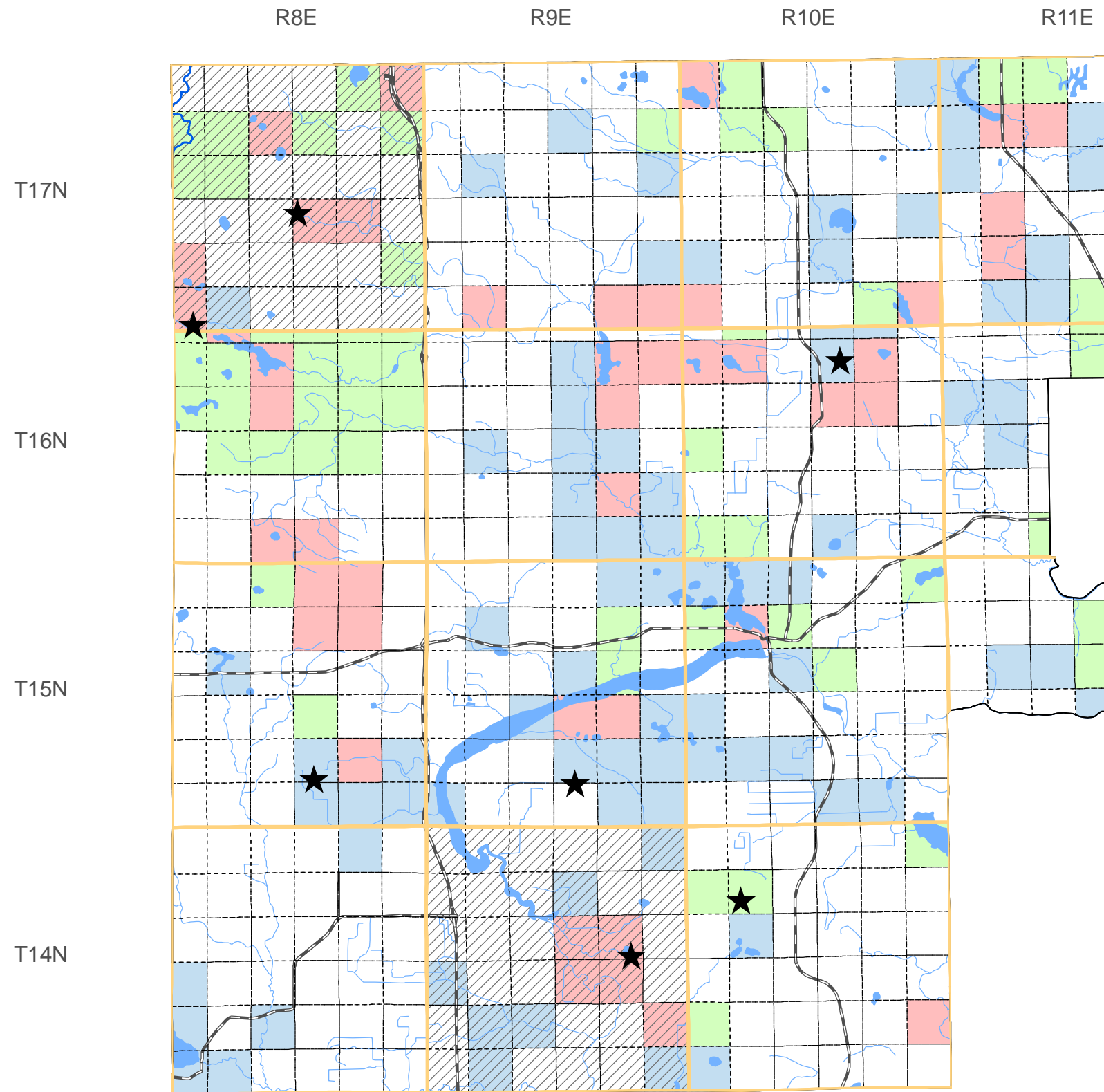
Kamer Blue, *Lycaeides melissa samuelis*, 2004
 A Tiger Beetle, *Cicindela patruela huberi*, 2000
 Loggerhead Shrike, *Lanius ludovicianus*, 2001
 Bell's Vireo, *Vireo bellii*, 1982
 Slender Glass Lizard, *Ophisaurus attenuatus*, 2010
 Gorgone Checker Spot, *Chlosyne gorgone*, 1985
 Long-eared Owl, *Asio otus*, 2005
 Gray Wolf, *Canis lupus*, 2008
 Eastern Hog-nosed Snake, *Heterodon platirhinos*, 2009
 Cerulean Warbler, *Dendroica cerulea*, 2010

Plants

Prairie Fame-flower, *Talinum rugospermum*, 2006
 One-flowered Broomrape, *Orobanche uniflora*, 1890
 Pale Green Orchid, *Platanthera flava var. herbiola*, 1980
 Brittle Prickly-pear, *Opuntia fragilis*, 2001
 Bushy Aster, *Aster dumosus var. strictior*, 1990
 Dwarf Milkweed, *Asclepias ovalifolia*, 2001
 Woolly Milkweed, *Asclepias lanuginosa*, 2005
 Prairie Parsley, *Polytaenia nuttallii*, 1942
 Purple Clematis, *Clematis occidentalis*, 1962
 Beak Grass, *Diarrhena obovata*, 2001
 Slender Bush-clover, *Lespedeza virginica*, 1955

Natural Communities

Oak Opening, Oak opening, 1967
 Southern Dry-mesic Forest, Southern dry-mesic forest, 1985
 Dry Prairie, Dry prairie, 1995
 Southern Dry Forest, Southern dry forest, 1987
 Oak Barrens, Oak barrens, 2001
 Sand Barrens, Sand barrens, 1978
 Oak Woodland, Oak woodland, 1993
 Cedar Glade, Cedar glade, 1971
 Northern Dry Forest, Northern dry forest, 1979
 Northern Dry-mesic Forest, Northern dry-mesic forest, 2005



SPECIES and/or
NATURAL COMMUNITY



Aquatic



Terrestrial



Both



Township
Occurrences



Watershed
Boundaries



State
Natural Area



This map represents the known occurrences of rare species and natural communities that have been recorded in the Wisconsin Natural Heritage Inventory (NHI). Colored sections indicate the presence of one or more occurrences within that section. Hatched townships indicate one or more occurrences reported only at the township level. The date following the names above notes the most recent year the occurrence was recorded in the county.



ENDANGERED
RESOURCES

Map generated using NHI data from: 09/15/2010
 Copyright 2003, WDNR-Bureau of Endangered Resources
 This map may not be reproduced without prior written permission.