

Kenosha County

AQUATIC OCCURRENCES

Animal

Eastern Massasauga, *Sistrurus catenatus catenatus*, 1977
 Northern Cricket Frog, *Acris crepitans*, 1971
 Slippershell Mussel, *Alasmidonta viridis*, 2001
 Redfin Shiner, *Lythrurus umbratilis*, 1968
 Pirate Perch, *Aphredoderus sayanus*, 1996
 American Bullfrog, *Lithobates catesbeianus*, 1993
 Broad-winged Skipper, *Poanes viator*, 1989
 Round Pigtoe, *Pleurobema sintoxia*, 2001
 Two-spotted Skipper, *Euphyes bimaculata*, 1993
 Mulberry Wing, *Poanes massasoit*, 1993
 Banded Killifish, *Fundulus diaphanus*, 1995
 Blanding's Turtle, *Emydoidea blandingii*, 2009
 Ellipse, *Venustaconcha ellipsiformis*, 2001
 Lake Chubsucker, *Erimyzon succetta*, 1995
 Double-striped Bluet, *Enallagma basidens*, 1989
 Weed Shiner, *Notropis texanus*, 1928
 Striped Shiner, *Luxilus chrysocephalus*, 1906
 Black Tern, *Chlidonias niger*, 1993
 Piping Plover, *Charadrius melodus*, 1938
 Eiktoe, *Alasmidonta marginata*, 2001
 Rainbow Shell, *Villosa iris*, 2001
 Pugnose Shiner, *Notropis anogenus*, 1995
 Prairie Crayfish, *Procambarus gracilis*, 1992
 Skipjack Herring, *Alosa chrysochloris*, 1991
 Starhead Topminnow, *Fundulus dispar*, 1995
 A Leafhopper, *Destria crocea*, 1966
 River Redhorse, *Moxostoma carinatum*, 1994
 Silphium Borer Moth, *Papaipema silphii*, 2010
 Forster's Tern, *Sterna forsteri*, 1993
 Liatris Borer Moth, *Papaipema beeriana*, 1992
 Least Darter, *Etheostoma microperca*, 1995
 Longear Sunfish, *Lepomis megalotis*, 1928
 Black-crowned Night-heron, *Nycticorax nycticorax*, 1956
 Pugnose Minnow, *Opsopoeodus emiliae*, 1995

Plants

Beaked Spikerush, *Eleocharis rostellata*, 1994
 Waxleaf Meadowrue, *Thalictrum revolutum*, 1992
 Grassleaf Rush, *Juncus marginatus*, 2001
 Seaside Crowfoot, *Ranunculus cymbalaria*, 1865
 Sticky False-asphodel, *Tofieldia glutinosa*, 2000
 Northern Yellow Lady's-slipper, *Cypripedium parviflorum var. makasin*, 2000
 Crawe Sedge, *Carex crawei*, 1966
 Tufted Bulrush, *Scirpus cespitosus*, 1970
 Flat-stemmed Spike-rush, *Eleocharis compressa*, 1968
 Showy Lady's-slipper, *Cypripedium reginae*, 1993
 False Hop Sedge, *Carex lupuliformis*, 1901
 Downy Willow-herb, *Epilobium strictum*, 1992
 Low Nutrush, *Scleria verticillata*, 2000
 American Sea-rocket, *Cakile lacustris*, 1992
 Prairie White-fringed Orchid, *Platanthera leucophaea*, 2008
 Slender Bog Arrow-grass, *Triglochin palustris*, 2000
 Common Bog Arrow-grass, *Triglochin maritima*, 1993
 Lesser Fringed Gentian, *Gentianopsis procera*, 2000
 Whip Nutrush, *Scleria triglomerata*, 1966
 Smooth Phlox, *Phlox glaberrima ssp. interior*, 2002
 Hairy Fimbristylis, *Fimbristylis puberula*, 1986
 Small White Lady's-slipper, *Cypripedium candidum*, 1994
 Marsh Blazing Star, *Liatris spicata*, 2001
 Heart-leaved Plantain, *Plantago cordata*, 1899
 Pink Milkwort, *Polygala incarnata*, 1966
 Ohio Goldenrod, *Solidago ohioensis*, 2000

Natural Communities

Bog Relict, Bog relict, 1992
 Wet Prairie, Wet prairie, 1993
 Emergent Marsh, Emergent marsh, 2005
 Southern Sedge Meadow, Southern sedge meadow, 2005
 Wet-mesic Prairie, Wet-mesic prairie, 2003
 Lake-Shallow, Hard, Seepage, Lake-shallow, hard, seepage, 1988
 Northern Wet Forest, Northern wet forest, 1976
 Calcareous Fen, Calcareous fen, 1993
 Springs and Spring Runs, Hard, Springs and spring runs, hard, 1976
 Shrub-carr, Shrub-carr, 2006
 Lake-Soft Bog, Lake-soft bog, 1976
 Great Lakes Dune, Great lakes dune, 1991

TERRESTRIAL OCCURRENCES

Animal

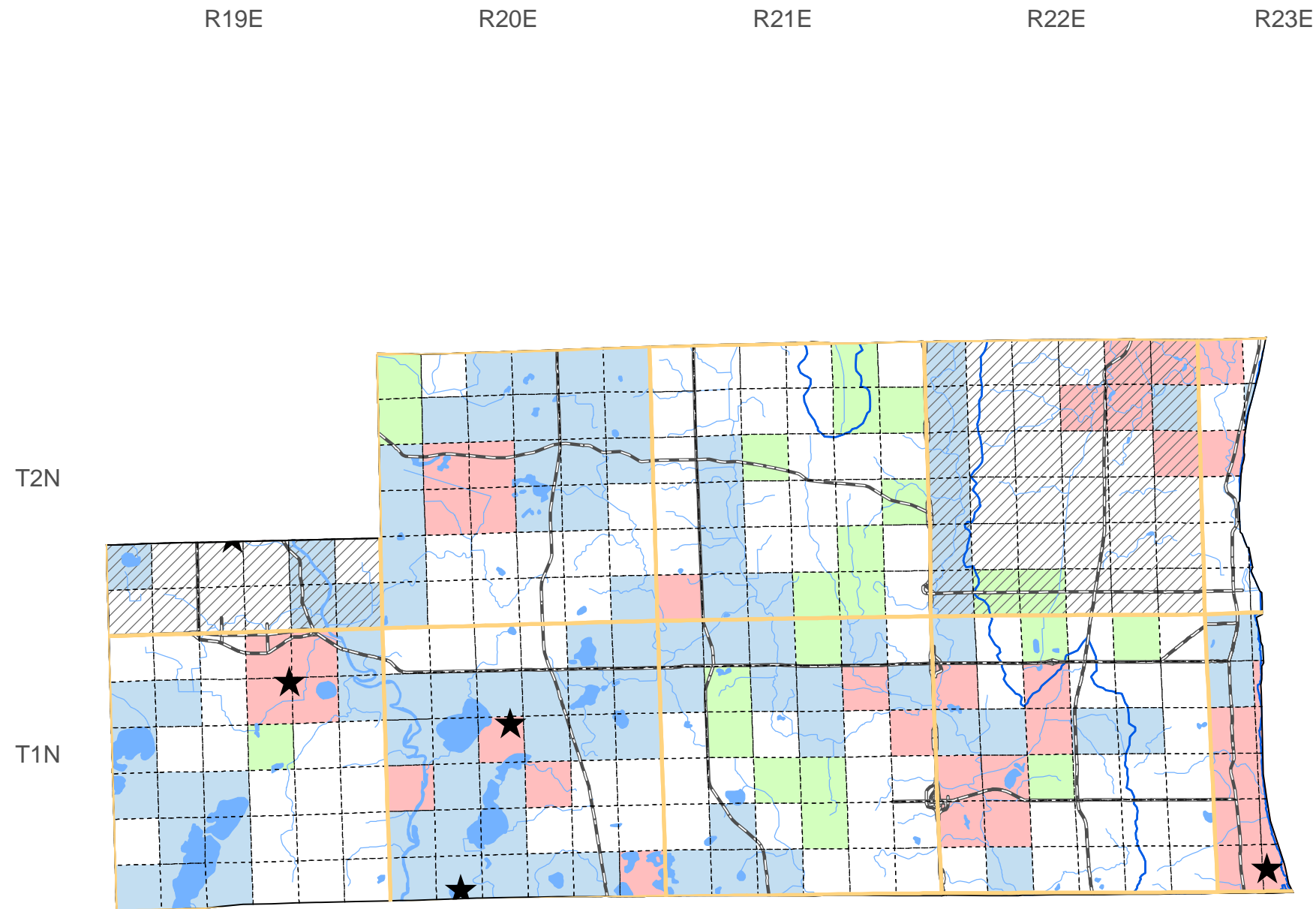
Upland Sandpiper, *Bartramia longicauda*, 1999
 Western Meadowlark, *Sturnella neglecta*, 1994
 Franklin's Ground Squirrel, *Spermophilus franklinii*, 2005
 Henslow's Sparrow, *Ammodramus henslowii*, 1993
 Dickcissel, *Spiza americana*, 2000
 Peregrine Falcon, *Falco peregrinus*, 2009
 Red-tailed Prairie Leafhopper, *Aftelia rubranura*, 2001

Plants

Great Indian-plantain, *Cacalia muehlenbergii*, 1898
 One-flowered Broomrape, *Orobanche uniflora*, 1992
 Reflexed Trillium, *Trillium recurvatum*, 2001
 Seaside Spurge, *Euphorbia polygonifolia*, 1991
 Sand Reedgrass, *Calamovilfa longifolia var. magna*, 1992
 Pale False Foxglove, *Agalinis skinneriana*, 2000
 Yellow Gentian, *Gentiana alba*, 1933
 Richardson Sedge, *Carex richardsonii*, 1966
 Roundstem Foxglove, *Agalinis gattingeri*, 1985
 Prairie Indian Plantain, *Cacalia tuberosa*, 2002
 Swan Sedge, *Carex swanii*, 1900
 Harbinger-of-spring, *Erigenia bulbosa*, 1898
 Prairie Milkweed, *Asclepias sullivantii*, 2000
 Twinleaf, *Jeffersonia diphylla*, 1991
 Purple Milkweed, *Asclepias purpurascens*, 1990
 Upland Boneset, *Eupatorium sessilifolium var. brittonianum*, 1976
 Woolly Milkweed, *Asclepias lanuginosa*, 1970
 Wilcox Panic Grass, *Panicum wilcoxianum*, 1970
 Pale Beardtongue, *Penstemon pallidus*, 1962
 American Fever-few, *Parthenium integrifolium*, 2002
 Low Calamint, *Calamintha arkansana*, 2001
 Smooth Black-haw, *Viburnum prunifolium*, 1997
 Prairie Dunewort, *Botrychium campestre*, 2005
 Cooper's Milkvetch, *Astragalus neglectus*, 1997

Natural Communities

Southern Dry-mesic Forest, Southern dry-mesic forest, 2006
 Southern Dry Forest, Southern dry forest, 1992
 Dry-mesic Prairie, Dry-mesic prairie, 2001
 Mesic Prairie, Mesic prairie, 1992
 Southern Mesic Forest, Southern mesic forest, 1992



SPECIES and/or
NATURAL COMMUNITY



Aquatic



Terrestrial



Both



Township
Occurrences



Watershed
Boundaries



State
Natural Area



This map represents the known occurrences of rare species and natural communities that have been recorded in the Wisconsin Natural Heritage Inventory (NHI). Colored sections indicate the presence of one or more occurrences within that section. Hatched townships indicate one or more occurrences reported only at the township level. The date following the names above notes the most recent year the occurrence was recorded in the county.



ENDANGERED
RESOURCES

Map generated using NHI data from: 09/15/2010
 Copyright 2003, WDNR-Bureau of Endangered Resources
 This map may not be reproduced without prior written permission.