

Jefferson County

AQUATIC OCCURRENCES

Animal

Redfin Shiner, *Lythrurus umbratilis*, 1928
 Northern Cricket Frog, *Acris crepitans*, 1983
 American Bullfrog, *Lithobates catesbeianus*, 1987
 Trumpeter Swan, *Cygnus buccinator*, 2000
 Banded Killifish, *Fundulus diaphanus*, 1995
 Blanding's Turtle, *Emydoidea blandingii*, 2009
 Western Sand Darter, *Etheostoma clarum*, 1923
 Slender Madtom, *Noturus exilis*, 2008
 Ellipse, *Venustaconcha ellipsiformis*, 2009
 Lake Chubsucker, *Erimyzon sucetta*, 2009
 Weed Shiner, *Notropis texanus*, 1928
 Double-striped Bluet, *Enallagma basidens*, 2007
 Lake Sturgeon, *Acipenser fulvescens*, 1979
 Jade Clubtail, *Arigomphus submedianus*, 2003
 Bald Eagle, *Haliaeetus leucocephalus*, 2008
 Black Tern, *Chlidonias niger*, 2009
 Queensnake, *Regina septemvittata*, 1894
 Pugnose Shiner, *Notropis anogenus*, 2004
 Silphium Borer Moth, *Papaipema silphii*, 2005
 River Redhorse, *Moxostoma carinatum*, 2006
 Liatris Borer Moth, *Papaipema beeriana*, 2002
 Least Darter, *Etheostoma microperca*, 2005
 Black-crowned Night-heron, *Nycticorax nycticorax*, 1977
 Pugnose Minnow, *Opsopoeodus emiliae*, 1976
 Prothonotary Warbler, *Protonotaria citrea*, 2005
 Western Ribbonsnake, *Thamnophis proximus*, 1963
 Greater Redhorse, *Moxostoma valenciennesi*, 2006

Plants

Sticky False-asphodel, *Tofieldia glutinosa*, 1991
 Crossleaf Milkwort, *Polygala cruciata*, 1885
 Northern Yellow Lady's-slipper, *Cypripedium parviflorum* var. *makasin*, 1996
 Crawe Sedge, *Carex crawei*, 2005
 Flat-stemmed Spike-rush, *Eleocharis compressa*, 2009
 Few-flower Spikerush, *Eleocharis quinqueflora*, 2007
 Swamp-pink, *Arethusa bulbosa*, 1861
 Prairie Straw Sedge, *Carex suberecta*, 1950
 Showy Lady's-slipper, *Cypripedium reginae*, 1984
 Downy Willow-herb, *Epilobium strictum*, 2006
 Prairie White-fringed Orchid, *Platanthera leucophaea*, 2007
 Common Bog Arrow-grass, *Triglochin maritima*, ?
 Lesser Fringed Gentian, *Gentianopsis procera*, 1976
 Slenderleaf Sundew, *Drosera linearis*, 1860
 Cuckooflower, *Cardamine pratensis*, 2004
 Small White Lady's-slipper, *Cypripedium candidum*, 2009
 Ohio Goldenrod, *Solidago ohioensis*, 2000
 Yellow Water Lily, *Nuphar advena*, 1943
 Marsh Blazing Star, *Liatris spicata*, 1981

Natural Communities

Open Bog, Open bog, 1984
 Wet-mesic Prairie, Wet-mesic prairie, 2009
 Emergent Marsh, Emergent marsh, 1986
 Southern Sedge Meadow, Southern sedge meadow, 2005
 Wet Prairie, Wet prairie, 1984
 Floodplain Forest, Floodplain forest, 1986
 Lake-Shallow, Hard, Seepage, Lake-shallow, hard, seepage, 1998
 Calcareous Fen, Calcareous fen, 1984
 Northern Wet Forest, Northern wet forest, 1984
 Springs and Spring Runs, Hard, Springs and spring runs, hard, 1984
 Southern Tamarack Swamp (Rich), Southern tamarack swamp (rich), 1999
 Shrub-carr, Shrub-carr, 1984
 Lake-Hard Bog, Lake-hard bog, 1984
 Lake-Shallow, Hard, Drainage, Lake-shallow, hard, drainage, 1984
 Stream-Slow, Hard, Warm, Stream-slow, hard, warm, 1984

TERRESTRIAL OCCURRENCES

Animal

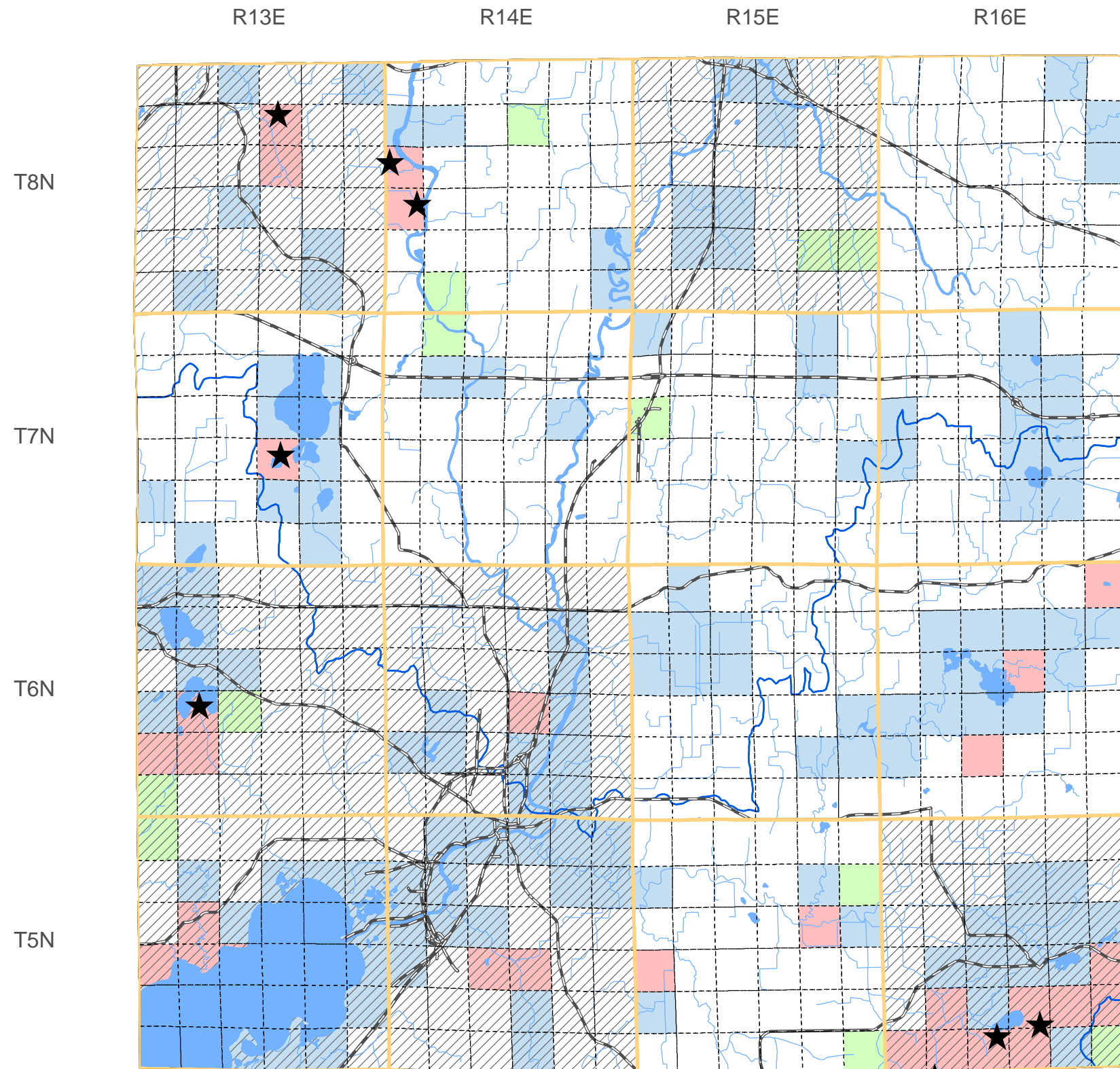
Yellow-billed Cuckoo, *Coccyzus americanus*, 2005
 Upland Sandpiper, *Bartramia longicauda*, 1986
 Acadian Flycatcher, *Empidonax virescens*, 2009
 Bird Rookery, Bird Rookery, 1988
 Barn Owl, *Tyto alba*, 1981
 Cerulean Warbler, *Dendroica cerulea*, 2010
 Red-tailed Prairie Leafhopper, *Afflexia rubranura*, 2003
 Hooded Warbler, *Wilsonia citrina*, 2009
 A Leafhopper, *Flexamia prairiana*, 1996

Plants

Pale Green Orchid, *Platanthera flava* var. *herbiola*, 1865
 Prairie Sagebrush, *Artemisia frigida*, 1886
 Reflexed Trillium, *Trillium recurvatum*, 2002
 Yellow Giant Hyssop, *Agastache nepetoides*,
 Yellow Gentian, *Gentiana alba*, 2009
 Yellow Evening Primrose, *Calylophus serrulatus*, 1942
 Richardson Sedge, *Carex richardsonii*, 2001
 Prairie Indian Plantain, *Cacalia tuberosa*, 2009
 White Camas, *Zigadenus elegans* var. *glaucus*, 2009
 Prairie Milkweed, *Asclepias sullivantii*, 2000
 Purple Milkweed, *Asclepias purpurascens*, 2009
 Autumn Coral-root, *Corallorhiza odontorhiza*, 2004
 Kitten Tails, *Besseyia bullii*, 2009
 American Gromwell, *Lithospermum latifolium*, 2001

Natural Communities

Oak Opening, Oak opening, 2009
 Southern Dry Forest, Southern dry forest, 1984
 Dry Prairie, Dry prairie, 2005
 Southern Dry-mesic Forest, Southern dry-mesic forest, 2006
 Southern Mesic Forest, Southern mesic forest, 2004



SPECIES and/or
NATURAL COMMUNITY



Aquatic



Terrestrial



Both



Township
Occurrences



Watershed
Boundaries



State
Natural Area



This map represents the known occurrences of rare species and natural communities that have been recorded in the Wisconsin Natural Heritage Inventory (NHI). Colored sections indicate the presence of one or more occurrences within that section. Hatched townships indicate one or more occurrences reported only at the township level. The date following the names above notes the most recent year the occurrence was recorded in the county.

Map generated using NHI data from: 09/15/2010
 Copyright 2003, WDNR-Bureau of Endangered Resources
 This map may not be reproduced without prior written permission.



ENDANGERED
RESOURCES