

# Sheboygan County

## AQUATIC OCCURRENCES

### Animal

Osprey, *Pandion haliaetus*, 2008  
 Ellipse, *Venustaconcha ellipsiformis*, 1999  
 Bald Eagle, *Haliaeetus leucocephalus*, 2008  
 Black Tern, *Chlidonias niger*, 1989  
 Queensnake, *Regina septemvittata*, 1992  
 Least Darter, *Etheostoma microperca*, 1978  
 Mulberry Wing, *Poanes massasoit*, 2001  
 Piping Plover, *Charadrius melodus*, 1937  
 Rainbow Shell, *Villosa iris*, 1995  
 Pugnose Shiner, *Notropis anogenus*, 1978  
 Striped Shiner, *Luxilus chrysocephalus*, 1978  
 Lake Chubsucker, *Erimyzon succetta*, 1979  
 Banded Killifish, *Fundulus diaphanus*, 1979  
 Greater Redhorse, *Moxostoma valenciennesi*, 1996  
 Unicorn Clubtail, *Argomphus villosipes*, 1989  
 American Bullfrog, *Lithobates catesbeianus*, 2007  
 Blanding's Turtle, *Emydoidea blandingii*, 2005  
 Eastern Ribbonsnake, *Thamnophis sauritus*, 1988  
 Red-shouldered Hawk, *Buteo lineatus*, 2008  
 Seaside Grasshopper, *Trimerotropis maritima*, 1999  
 Slippershell Mussel, *Alasmidonta viridis*, 1997  
 Broad-winged Skipper, *Poanes viator*, 2001  
 Butler's Gartersnake, *Thamnophis butleri*, 2002  
 Four-toed Salamander, *Hemidactylium scutatum*, 2007  
 Black-crowned Night-heron, *Nycticorax nycticorax*, 1937  
 A Predaceous Diving Beetle, *Lioporeus triangularis*, 1996

### Plants

Swamp-pink, *Arethusa bulbosa*, 1917  
 Cuckooflower, *Cardamine pratensis*, 1981  
 Marsh Valerian, *Valeriana sitchensis* ssp. *uliginosa*, 2000  
 Swamp Bedstraw, *Galium brevipes*, 1961  
 Seaside Crowfoot, *Ranunculus cymbalaria*, 1909  
 Tufted Hairgrass, *Deschampsia cespitosa*, 1965  
 Many-headed Sedge, *Carex sychnocephala*, 1995  
 Waxleaf Meadowrue, *Thalictrum revolutum*, 1971  
 Leafy White Orchis, *Platanthera dilatata*, 1917  
 American Sea-rocket, *Cakile lacustris*, 1986  
 White Adder's-mouth, *Malaxis monophyllos* var. *brachypoda*, 1915  
 Showy Lady's-slipper, *Cypripedium reginae*, 1918  
 Variegated Horsetail, *Equisetum variegatum*, 1987  
 Common Bog Arrow-grass, *Triglochin maritima*, 1934  
 Slender Bog Arrow-grass, *Triglochin palustris*, 1987  
 Ram's-head Lady's-slipper, *Cypripedium arietinum*, 1915  
 Slim-stem Small-reedgrass, *Calamagrostis stricta*, 1978  
 Northern Yellow Lady's-slipper, *Cypripedium parviflorum* var. *makasin*, 1988

### Natural Communities

Open Bog, Open bog, 1979  
 Bog Relict, Bog relict, 1968  
 Shrub-carr, Shrub-carr, 1988  
 Spring Pond, Spring pond, 1978  
 Alder Thicket, Alder thicket, 1976  
 Calcareous Fen, Calcareous fen, 2006  
 Emergent Marsh, Emergent marsh, 2006  
 Hardwood Swamp, Hardwood swamp, 2006  
 Lake-Soft Bog, Lake-soft bog, 1976  
 Great Lakes Dune, Great lakes dune, 2006  
 Floodplain Forest, Floodplain forest, 1978  
 Great Lakes Beach, Great lakes beach, 2001  
 Interdunal Wetland, Interdunal wetland, 2001  
 Northern Wet Forest, Northern wet forest, 1979  
 Northern Sedge Meadow, Northern sedge meadow, 1978  
 Southern Sedge Meadow, Southern sedge meadow, 1978  
 Stream-Fast, Hard, Cold, Stream-fast, hard, cold, 1979  
 Northern Wet-mesic Forest, Northern wet-mesic forest, 2006  
 Lake-Deep, Hard, Drainage, Lake-deep, hard, drainage, 1979  
 Great Lakes Ridge and Swale, Great Lakes Ridge and Swale, 1981  
 Lake-Shallow, Hard, Seepage, Lake-shallow, hard, seepage, 1977  
 Lake-Shallow, Hard, Drainage, Lake-shallow, hard, drainage, 1976  
 Springs and Spring Runs, Hard, Springs and spring runs, hard, 2006  
 Springs and Spring Runs, Soft, Springs and spring runs, soft, 1978

## TERRESTRIAL OCCURRENCES

### Animal

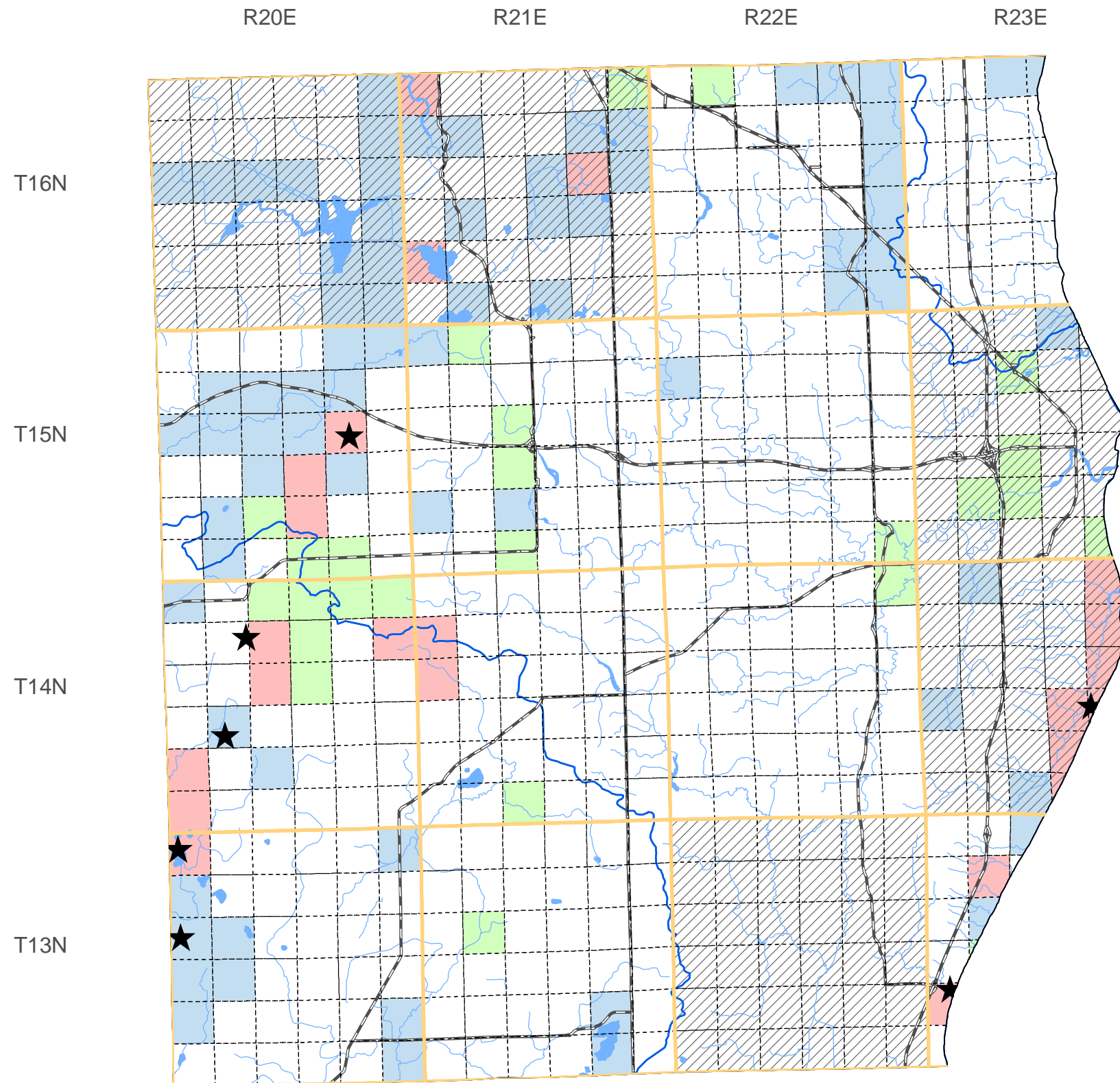
Barn Owl, *Tyto alba*, 1982  
 Hooded Warbler, *Wilsonia citrina*, 2008  
 Cerulean Warbler, *Dendroica cerulea*, 2007  
 Cherrystone Drop, *Hendersonia occulta*, 1998  
 Northern Goshawk, *Accipiter gentilis*, 1999  
 Peregrine Falcon, *Falco peregrinus*, 2006  
 Acadian Flycatcher, *Empidonax vireoscens*, 2007  
 Phyllira Tiger Moth, *Grammia phyllira*, 1992  
 Yellow-billed Cuckoo, *Coccyzus americanus*, 2008

### Plants

Marbleseed, *Onosmodium molle*, 1919  
 Thickspike, *Elymus lanceolatus* ssp. *psammophilus*, 1984  
 Dune Thistle, *Cirsium pitcheri*, 2008  
 Forked Aster, *Aster furcatus*, 1916  
 Early Anemone, *Anemone multifida* var. *hudsoniana*, 1918  
 Hooker Orchis, *Platanthera hookeri*, 1916  
 Snow Trillium, *Trillium nivale*, 1994  
 Christmas Fern, *Polystichum acrostichoides*, 1994  
 Dune Goldenrod, *Solidago simplex* var. *gillmanii*, 1978  
 Fragrant Sumac, *Rhus aromatica*, 1992  
 Sand Reedgrass, *Calamovilfa longifolia* var. *magna*, 2000  
 Seaside Spurge, *Euphorbia polygonifolia*, 1986  
 Small Skullcap, *Scutellaria parvula* var. *parvula*, 1904  
 Yellow Gentian, *Gentiana alba*, 1963  
 Dragon Wormwood, *Artemisia dracunculus*, 1940  
 Long-spur Violet, *Viola rostrata*, 1959  
 Prairie Dunewort, *Botrychium campestre*, 1985  
 Richardson Sedge, *Carex richardsonii*, 1923  
 American Gromwell, *Lithospermum latifolium*, 1994  
 Hairy Beardtongue, *Penstemon hirsutus*, 1962  
 Purple False Oats, *Trisetum melicoides*, 1879  
 Cooper's Milkvetch, *Astragalus neglectus*, 1904  
 Clustered Broomrape, *Orobanche fasciculata*, 1979  
 Indian Cucumber-root, *Medeola virginiana*, 1942  
 Narrow-leaved Broomrape, *Verbenia simplex*, 1964  
 Large Roundleaf Orchid, *Platanthera orbiculata*, 1915  
 One-flowered Broomrape, *Orobanche uniflora*, 1934  
 Yellow Evening Primrose, *Calylophus serrulatus*, 1940

### Natural Communities

Northern Mesic Forest, Northern mesic forest, 1976  
 Southern Mesic Forest, Southern mesic forest, 2006  
 Northern Dry-mesic Forest, Northern dry-mesic forest, 2006  
 Southern Dry-mesic Forest, Southern dry-mesic forest, 2007



SPECIES and/or  
NATURAL COMMUNITY



Aquatic



Terrestrial



Both



Township  
Occurrences



Watershed  
Boundaries



State  
Natural Area



This map represents the known occurrences of rare species and natural communities that have been recorded in the Wisconsin Natural Heritage Inventory (NHI). Colored sections indicate the presence of one or more occurrences within that section. Hatched townships indicate one or more occurrences reported only at the township level. The date following the names above notes the most recent year the occurrence was recorded in the county.



ENDANGERED  
RESOURCES

Map generated using NHI data from: 04/08/2009  
 Copyright 2003, WDNR-Bureau of Endangered Resources  
 This map may not be reproduced without prior written permission.