

# Ozaukee County

## AQUATIC OCCURRENCES

### Animal

Osprey, *Pandion haliaetus*, 2008  
 Bald Eagle, *Haliaeetus leucocephalus*, 2008  
 Queensnake, *Regina septemvittata*, 1928  
 American Eel, *Anguilla rostrata*, 1910  
 Least Darter, *Etheostoma microperca*, 1967  
 An Owllet Moth, *Macrochilo bivittata*, 1983  
 Least Bittern, *Ixobrychus exilis*, 1998  
 Mulberry Wing, *Poanes massasoit*, 2001  
 Redfin Shiner, *Lythrurus umbralis*, 1995  
 Slaty Skimmer, *Libellula incesta*, 1993  
 Common Moorhen, *Gallinula chloropus*, 1998  
 Hine's Emerald, *Somatochlora hineana*, 2003  
 Striped Shiner, *Luxilus chrysocephalus*, 1979  
 Longear Sunfish, *Lepomis megalotis*, 1993  
 Swamp Metalmark, *Calephelis muticum*, 2008  
 Banded Killifish, *Fundulus diaphanus*, 1967  
 Fragile Forktail, *Ischnura posita*, 2002  
 Greater Redhorse, *Moxostoma valenciennesi*, 1996  
 Northern Pintail, *Anas acuta*, 1995  
 Prairie Crayfish, *Procambarus gracilis*, 2002  
 Warpaint Emerald, *Somatochlora incurvata*, 1993  
 Pitcher Plant Moth, *Exyra fax*, 1990  
 Red-shouldered Hawk, *Buteo lineatus*, 1981  
 Broad-winged Skipper, *Poanes viator*, 1992  
 Butler's Gartersnake, *Thamnophis butleri*, 2008  
 Double-striped Bluet, *Enallagma basidens*, 2002  
 Northern Cricket Frog, *Acris crepitans*, 1987  
 Midwestern Fen Buckmoth, *Hemileuca sp. 3*, 2002  
 Robust Dubiraphian Riffle Beetle, *Dubiraphia robusta*, 1994

### Plants

Swamp-pink, *Arethusa bulbosa*, 1991  
 Livid Sedge, *Carex livida* var. *radiculis*, 1996  
 Cuckooflower, *Cardamine pratensis*, 2000  
 Waxleaf Meadowrue, *Thalictrum revolutum*, 1976  
 Capitata Spikerush, *Eleocharis olivacea*, 1934  
 Leafy White Orchis, *Platanthera dilatata*, 2001  
 Northern Bog Sedge, *Carex gynocrates*, 1996  
 Slenderleaf Sundew, *Drosera linearis*, 1990  
 American Sea-rocket, *Cakile lacustris*, 2000  
 Round-leaved Orchis, *Amerorchis rotundifolia*, 1935  
 White Adder's-mouth, *Malaxis monophyllos* var. *brachypoda*, 1991  
 Few-flower Spikerush, *Eleocharis quinqueflora*, 1934  
 Showy Lady's-slipper, *Cypripedium reginae*, 2001  
 Variegated Horsetail, *Equisetum variegatum*, 1991  
 Heart-leaved Plantain, *Plantago cordata*, 2001  
 Sparse-flowered Sedge, *Carex tenuiflora*, 1999  
 Sticky False-asphodel, *Tofieldia glutinosa*, 2002  
 Common Bog Arrow-grass, *Triglochin maritima*, 2001  
 Slender Bog Arrow-grass, *Triglochin palustris*, 1941  
 Ram's-head Lady's-slipper, *Cypripedium arietinum*, 1986  
 Prairie White-fringed Orchid, *Platanthera leucophaea*, 2008  
 Sweet-scented Indian-plantain, *Cacalia suaveolens*, 1996  
 Northern Yellow Lady's-slipper, *Cypripedium parviflorum* var. *makasin*, 2004

### Natural Communities

Poor Fen, Poor fen, 1991  
 Bog Relict, Bog relict, 1993  
 Shrub-carr, Shrub-carr, 2004  
 Alder Thicket, Alder thicket, 1989  
 Emergent Marsh, Emergent marsh, 1996  
 Ephemeral Pond, Ephemeral pond, 1985  
 Hardwood Swamp, Hardwood swamp, 1998  
 Lake-Hard Bog, Lake-hard bog, 1991  
 Floodplain Forest, Floodplain forest, 1998  
 Black Spruce Swamp, Black spruce swamp, 2000  
 Patterned Peatland, Patterned peatland, 2005  
 Northern Wet Forest, Northern wet forest, 1991  
 Southern Sedge Meadow, Southern sedge meadow, 1989  
 Southern Hardwood Swamp, Southern hardwood swamp, 2001  
 Stream-Fast, Hard, Cold, Stream-fast, hard, cold, 1985  
 Northern Wet-mesic Forest, Northern wet-mesic forest, 2004  
 Lake-Shallow, Hard, Seepage, Lake-shallow, hard, seepage, 1991  
 Lake-Shallow, Hard, Drainage, Lake-shallow, hard, drainage, 1985  
 Southern Tamarack Swamp (Rich), Southern tamarack swamp (rich), 1995

## TERRESTRIAL OCCURRENCES

### Animal

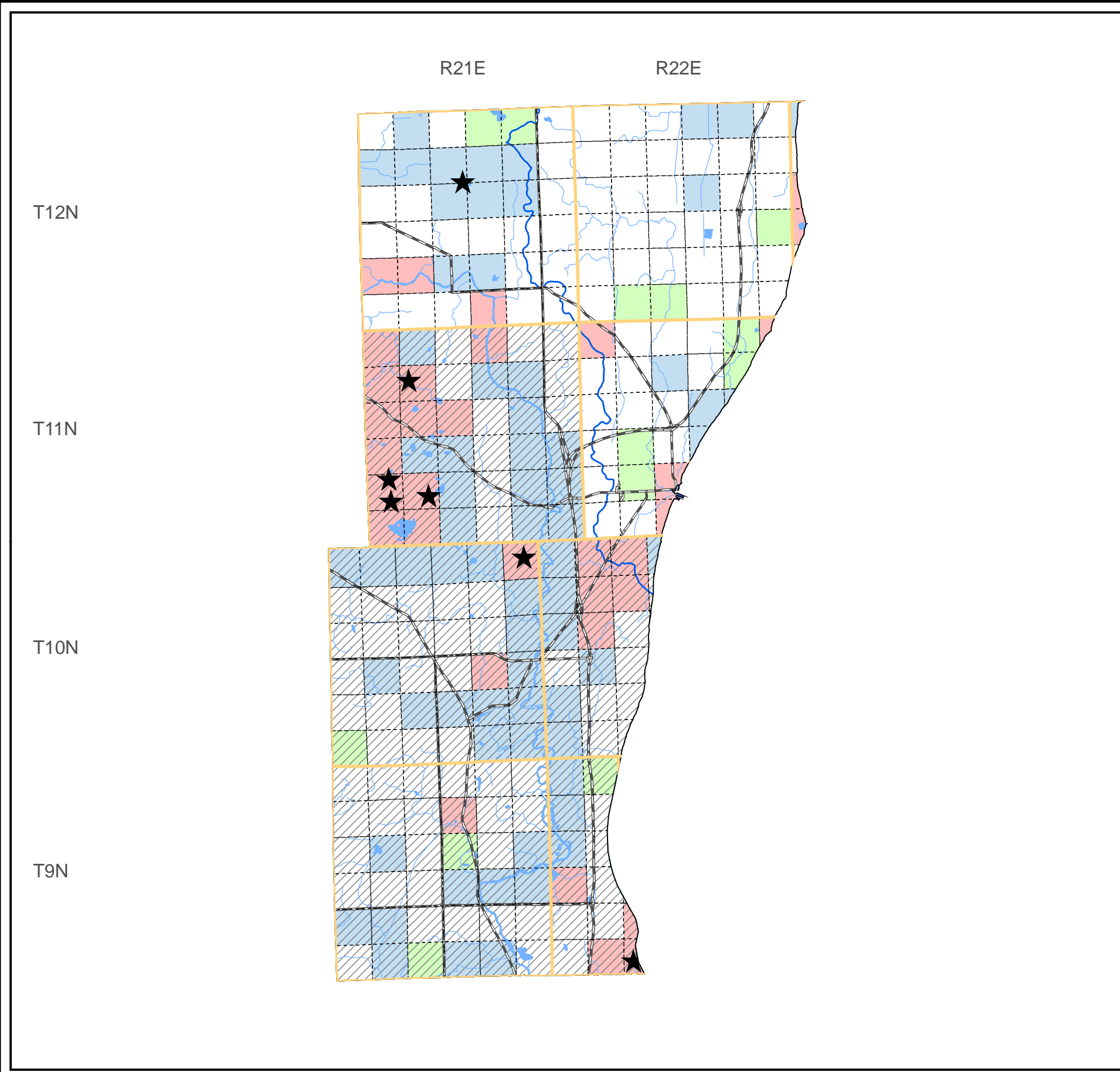
Barn Owl, *Tyto alba*, 1980  
 Dickcissel, *Spiza americana*, 1999  
 Bird Rookery, Bird Rookery, 2000  
 Oval Vallowia, *Vallonia excentrica*, 1996  
 Tapered Vertigo, *Vertigo elatior*, 2001  
 Cherystone Drop, *Hendersonia occulta*, 1998  
 Peregrine Falcon, *Falco peregrinus*, 2009  
 Regal Frillary, *Speyeria idalia*, 1987  
 Upland Sandpiper, *Bartramia longicauda*, 1999  
 Loggerhead Shrike, *Lanius ludovicianus*, 1999  
 Acadian Flycatcher, *Empidonax virescens*, 1999  
 Western Meadowlark, *Sturnella neglecta*, 1999

### Plants

Twingleaf, *Jeffersonia diphylla*, 1993  
 Wafer-ash, *Ptelea trifoliata*, 1912  
 Marbleseed, *Onosmodium molle*, 1908  
 Thickspike, *Elymus lanceolatus* ssp. *psammophilus*, 1979  
 Forked Aster, *Aster furcatus*, 2001  
 Hooker Orchis, *Platanthera hookeri*, 1938  
 Snow Trillium, *Trillium nivale*, 2001  
 Chinquapin Oak, *Quercus muehlenbergii*, 2001  
 Handsome Sedge, *Carex formosa*, 1988  
 Seaside Spurge, *Euphorbia polygonifolia*, 1960  
 Giant Pinedrops, *Pteropora andromedea*, 1979  
 Smooth Black-haw, *Viburnum prunifolium*, 1963  
 American Gromwell, *Lithospermum latifolium*, 2001  
 Autumn Coral-root, *Corallorhiza odoratrhiza*, 1932  
 Hairy Beardtongue, *Penstemon hirsutus*, 1967  
 Reflexed Trillium, *Trillium recurvatum*, 1999  
 Clustered Broomrape, *Orobanche fasciculata*, 1935  
 Large Roundleaf Orchid, *Platanthera orbiculata*, 1928

### Natural Communities

Northern Mesic Forest, Northern mesic forest, 2004  
 Southern Mesic Forest, Southern mesic forest, 2002  
 Northern Dry-mesic Forest, Northern dry-mesic forest, 2000  
 Southern Dry-mesic Forest, Southern dry-mesic forest, 2000



SPECIES and/or NATURAL COMMUNITY | Aquatic | Terrestrial | Both | Township Occurrences | Watershed Boundaries | State Natural Area



This map represents the known occurrences of rare species and natural communities that have been recorded in the Wisconsin Natural Heritage Inventory (NHI). Colored sections indicate the presence of one or more occurrences within that section. Hatched townships indicate one or more occurrences reported only at the township level. The date following the names above notes the most recent year the occurrence was recorded in the county.

Map generated using NHI data from: 04/08/2009  
 Copyright 2003, WDNR-Bureau of Endangered Resources  
 This map may not be reproduced without prior written permission.

