

# Manitowoc County

## AQUATIC OCCURRENCES

### Animal

Eiktoe, *Alasmidonta marginata*, 1996  
 Osprey, *Pandion haliaetus*, 2008  
 Ellipse, *Venustaconcha ellipsiformis*, 1997  
 Bald Eagle, *Haliaeetus leucocephalus*, 2008  
 Black Tern, *Chlidonias niger*, 2008  
 Monkeyface, *Quadrula metanevra*, 1996  
 Redside Dace, *Clinostomus elongatus*, 1994  
 Redfin Shiner, *Lythrurus umbratilis*, 1956  
 A Noctuid Moth, *Copablepharon michiganensis*, 1992  
 Lake Chubsucker, *Erimyzon succetta*, 1976  
 Banded Killifish, *Fundulus diaphanus*, 1982  
 Greater Redhorse, *Moxostoma valenciennesi*, 1996  
 Blanding's Turtle, *Emydoidea blandingii*, 1998  
 Wilson's Phalarope, *Phalaropus tricolor*, 1999  
 Red-shouldered Hawk, *Buteo lineatus*, 1977  
 Slippershell Mussel, *Alasmidonta viridis*, 1997  
 Broad-winged Skipper, *Poanes viator*, 2000  
 Four-toed Salamander, *Hemidactylum scutatum*, 1995  
 Northern Cricket Frog, *Acris crepitans*, 1947  
 Beach-dune Tiger Beetle, *Cicindela hirticollis rhodensis*, 2000  
 Black-crowned Night-heron, *Nycticorax nycticorax*, 1978

### Plants

Swamp-pink, *Arethusa bulbosa*, 1929  
 Shore Sedge, *Carex lenticularis*,  
 Cuckooflower, *Cardamine pratensis*, 1978  
 Seaside Crowfoot, *Ranunculus cymbalaria*, 1913  
 Many-headed Sedge, *Carex sychnocephala*, 2001  
 American Sea-rocket, *Cakile lacustris*, 2001  
 White Adder's-mouth, *Malaxis monophyllus var. brachypoda*,  
 Showy Lady's-slipper, *Cypripedium reginae*, 1885  
 Variegated Horsetail, *Equisetum variegatum*, 1959  
 Sticky False-asphodel, *Tofieldia glutinosa*, 1911  
 Common Bog Arrow-grass, *Triglochin maritima*, 1978  
 Slender Bog Arrow-grass, *Triglochin palustris*, 2001  
 Slim-stem Small-reedgrass, *Calamagrostis stricta*, 2001  
 Northern Yellow Lady's-slipper, *Cypripedium parviflorum var. makasin*, 1911

### Natural Communities

Open Bog, Open bog, 1978  
 Emergent Marsh, Emergent marsh, 1976  
 Hardwood Swamp, Hardwood swamp, 2001  
 Lake-Hard Bog, Lake-hard bog, 1977  
 Lake-Soft Bog, Lake-soft bog, 1978  
 Great Lakes Dune, Great lakes dune, 2001  
 Floodplain Forest, Floodplain forest, 1978  
 Great Lakes Beach, Great lakes beach, 2001  
 Clay Seepage Bluff, Clay seepage bluff, 2001  
 Interdunal Wetland, Interdunal wetland, 2001  
 Northern Wet Forest, Northern wet forest, 1979  
 Northern Sedge Meadow, Northern sedge meadow, 2001  
 Southern Sedge Meadow, Southern sedge meadow, 2001  
 Lake-Deep, Hard, Seepage, Lake-deep, hard, seepage, 1976  
 Northern Wet-mesic Forest, Northern wet-mesic forest, 2001  
 Great Lakes Ridge and Swale, Great Lakes Ridge and Swale, 2000

## TERRESTRIAL OCCURRENCES

### Animal

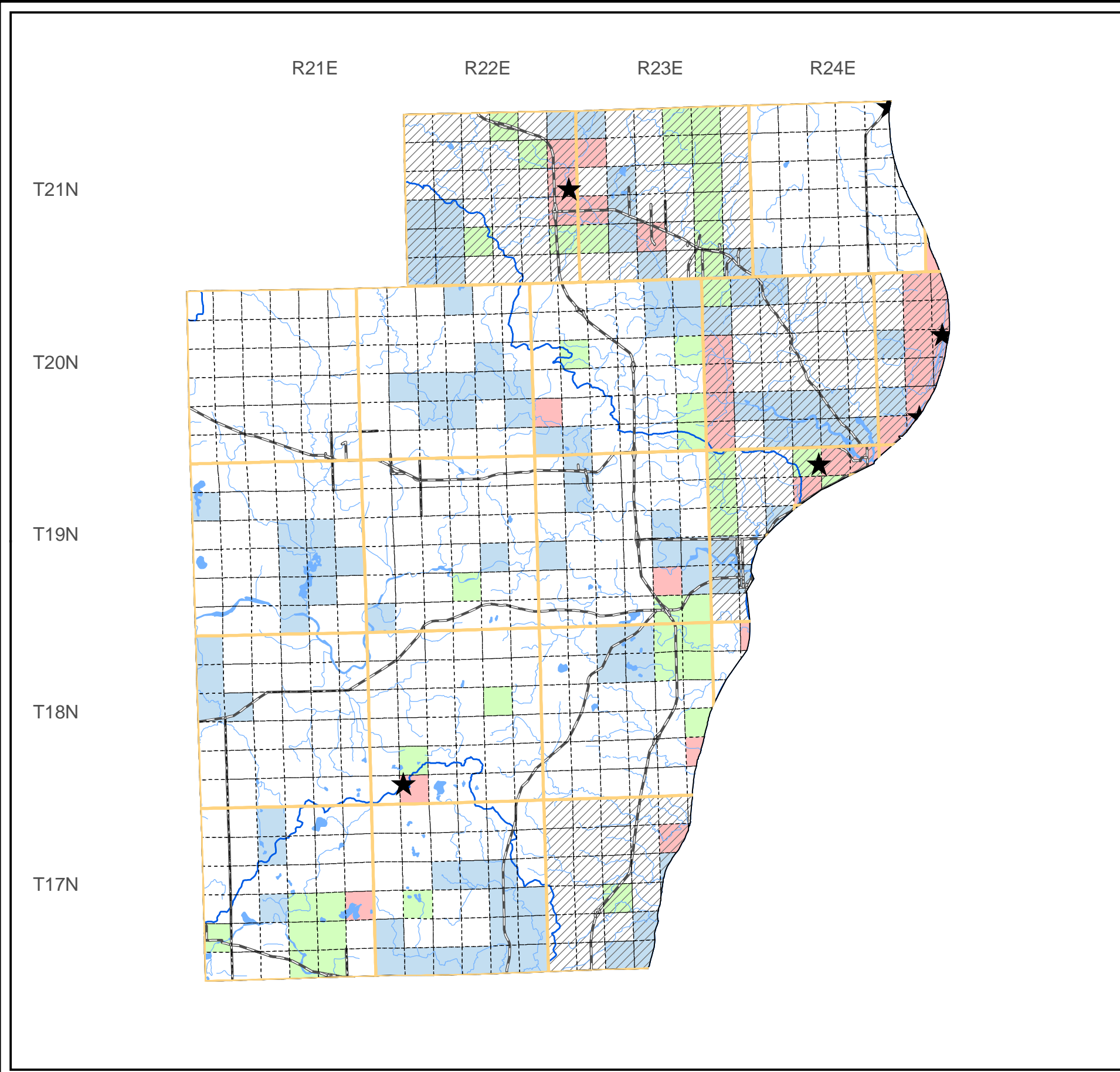
Barn Owl, *Tyto alba*, 1975  
 Dickcissel, *Spiza americana*, 1995  
 Pygmy Shrew, *Sorex hoyi*, 1987  
 Black Striate, *Sturnira ferrea*, 1998  
 Hooded Warbler, *Wilsonia citrina*, 1998  
 Tapered Vertigo, *Vertigo elatior*, 1997  
 Bat Hibernaculum, *Bat Hibernaculum*, 1990  
 Cerulean Warbler, *Dendroica cerulea*, 1988  
 Cherrystone Drop, *Hendersonia occulta*, 1997  
 Upland Sandpiper, *Bartramia longicauda*, 1997  
 Henslow's Sparrow, *Ammodramus henslowii*, 1984  
 Acadian Flycatcher, *Empidonax virescens*, 1999  
 Western Meadowlark, *Sturnella neglecta*, 1997  
 Phyllira Tiger Moth, *Grammia phyllira*, 1992  
 Transparent Vitrine Snail, *Vitrina angelicae*, 2002  
 Northern Ring-necked Snake, *Diadophis punctatus edwardsii*, 1998  
 Black-throated Blue Warbler, *Dendroica caerulescens*, 2000  
 Midwest Pleistocene Vertigo, *Vertigo hubrichti*, 1996

### Plants

Twingleaf, *Jeffersonia diphylla*, 1994  
 Glade Fern, *Diplazium pycnocarpon*, 1900  
 Putty Root, *Aplectrum hyemale*, 1978  
 Thickspike, *Elymus lanceolatus ssp. psammophilus*, 1996  
 Dune Thistle, *Cirsium pitcheri*, 2008  
 Snow Trillium, *Trillium nivale*, 1993  
 Sand Reedgrass, *Calamovilfa longifolia var. magna*, 2000  
 Seaside Spurge, *Euphorbia polygonifolia*, 2001  
 Dragon Wormwood, *Artemisia dracunculoides*, 1913  
 Long-spur Violet, *Viola rostrata*, 1918  
 Pale Beardtongue, *Penstemon pallidus*, 1908  
 Sand Dune Willow, *Salix cordata*, 2001  
 American Gromwell, *Lithospermum latifolium*, 1994  
 Climbing Fumitory, *Adlumia fungosa*, 1977  
 Bird's-eye Primrose, *Primula mistassinica*, 1884  
 Clustered Broomrape, *Orobanche fasciculata*, 1979  
 Indian Cucumber-root, *Medeola virginiana*, 2006

### Natural Communities

Moist Cliff, Moist cliff, 1977  
 Northern Mesic Forest, Northern mesic forest, 1978  
 Southern Mesic Forest, Southern mesic forest, 1988  
 Northern Dry-mesic Forest, Northern dry-mesic forest, 1976  
 Southern Dry-mesic Forest, Southern dry-mesic forest, 1978



SPECIES and/or NATURAL COMMUNITY | Aquatic | Terrestrial | Both | Township Occurrences | Watershed Boundaries | State Natural Area



This map represents the known occurrences of rare species and natural communities that have been recorded in the Wisconsin Natural Heritage Inventory (NHI). Colored sections indicate the presence of one or more occurrences within that section. Hatched townships indicate one or more occurrences reported only at the township level. The date following the names above notes the most recent year the occurrence was recorded in the county.



Map generated using NHI data from: 04/08/2009  
 Copyright 2003, WDNR-Bureau of Endangered Resources  
 This map may not be reproduced without prior written permission.