

Kenosha County

AQUATIC OCCURRENCES

Animal

Eiktoe, *Alasmidonta marginata*, 2001
 Ellipse, *Venustaconcha ellipsiformis*, 2001
 Black Tern, *Chlidonias niger*, 1993
 Weed Shiner, *Notropis texanus*, 1928
 A Leafhopper, *Destria crocea*, 1966
 Least Darter, *Etheostoma microperca*, 1995
 Pirate Perch, *Aphredoderus sayanus*, 1996
 Round Pigtoe, *Pleurobema sintoxia*, 2001
 Mulberry Wing, *Poanes massasoitii*, 1993
 Piping Plover, *Charadrius melodus*, 1938
 Rainbow Shell, *Villosa iris*, 2001
 Redfin Shiner, *Lythrurus umbratilis*, 1968
 Forster's Tern, *Sterna forsteri*, 1993
 Pugnose Minnow, *Opsopoeodus emiliae*, 1995
 Pugnose Shiner, *Notropis anogenus*, 1995
 River Redhorse, *Moxostoma carinatum*, 1994
 Striped Shiner, *Luxilus chrysocephalus*, 1906
 Lake Chubsucker, *Erimyzon sucetta*, 1995
 Longear Sunfish, *Lepomis megalotis*, 1928
 Banded Killifish, *Fundulus diaphanus*, 1995
 Prairie Crayfish, *Procambarus gracilis*, 1992
 Skipjack Herring, *Alosa chrysochloris*, 1991
 American Bullfrog, *Lithobates catesbeianus*, 1993
 Blanding's Turtle, *Emydoidea blandingii*, 2008
 Eastern Massasauga, *Sistrurus catenatus catenatus*, 1977
 Liatris Borer Moth, *Papaipema beeriana*, 1992
 Starhead Topminnow, *Fundulus dispar*, 1995
 Silphium Borer Moth, *Papaipema silphii*, 2001
 Slippershell Mussel, *Alasmidonta viridis*, 2001
 Two-spotted Skipper, *Euphyes bimaculata*, 1993
 Broad-winged Skipper, *Poanes viator*, 1989
 Double-striped Bluet, *Enallagma basidens*, 1989
 Northern Cricket Frog, *Acris crepitans*, 1971
 Black-crowned Night-heron, *Nycticorax nycticorax*, 1956

Plants

Crawe Sedge, *Carex crawei*, 1966
 Low Nutrush, *Scleria verticillata*, 2000
 Smooth Phlox, *Phlox glaberrima* ssp. interior, 2002
 Whip Nutrush, *Scleria triglomerata*, 1966
 Pink Milkwort, *Polygala incarnata*, 1966
 Grassleaf Rush, *Juncus marginatus*, 2001
 Ohio Goldenrod, *Solidago ohioensis*, 2000
 Tufted Bulrush, *Scirpus cespitosus*, 1970
 False Hop Sedge, *Carex lupuliformis*, 1901
 Beaked Spikerush, *Eleocharis rostellata*, 1994
 Seaside Crowfoot, *Ranunculus cymbalaria*, 1865
 Downy Willow-herb, *Epilobium strictum*, 1992
 Waxleaf Meadowrue, *Thalictrum revolutum*, 1992
 Hairy Fimbristylis, *Fimbristylis puberula*, 1986
 Marsh Blazing Star, *Liatris spicata*, 2001
 American Sea-rocket, *Cakile lacustris*, 1992
 Showy Lady's-slipper, *Cypripedium reginae*, 1993
 Heart-leaved Plantain, *Plantago cordata*, 1899
 Sticky False-asphodel, *Tofieldia glutinosa*, 2000
 Common Bog Arrow-grass, *Triglochin maritima*, 1993
 Lesser Fringed Gentian, *Gentianopsis procera*, 2000
 Flat-stemmed Spike-rush, *Eleocharis compressa*, 1968
 Slender Bog Arrow-grass, *Triglochin palustris*, 2000
 Small White Lady's-slipper, *Cypripedium candidum*, 1994
 Prairie White-fringed Orchid, *Platanthera leucophaea*, 2008
 Northern Yellow Lady's-slipper, *Cypripedium parviflorum* var. *makasin*, 2000

Natural Communities

Bog Relict, Bog relict, 1992
 Shrub-carr, Shrub-carr, 2006
 Wet Prairie, Wet prairie, 1993
 Calcareous Fen, Calcareous fen, 1993
 Emergent Marsh, Emergent marsh, 2005
 Lake-Soft Bog, Lake-soft bog, 1976
 Great Lakes Dune, Great lakes dune, 1991
 Wet-mesic Prairie, Wet-mesic prairie, 2003
 Northern Wet Forest, Northern wet forest, 1976
 Southern Sedge Meadow, Southern sedge meadow, 2005
 Lake-Shallow, Hard, Seepage, Lake-shallow, hard, seepage, 1988
 Springs and Spring Runs, Hard, Springs and spring runs, hard, 1976

TERRESTRIAL OCCURRENCES

Animal

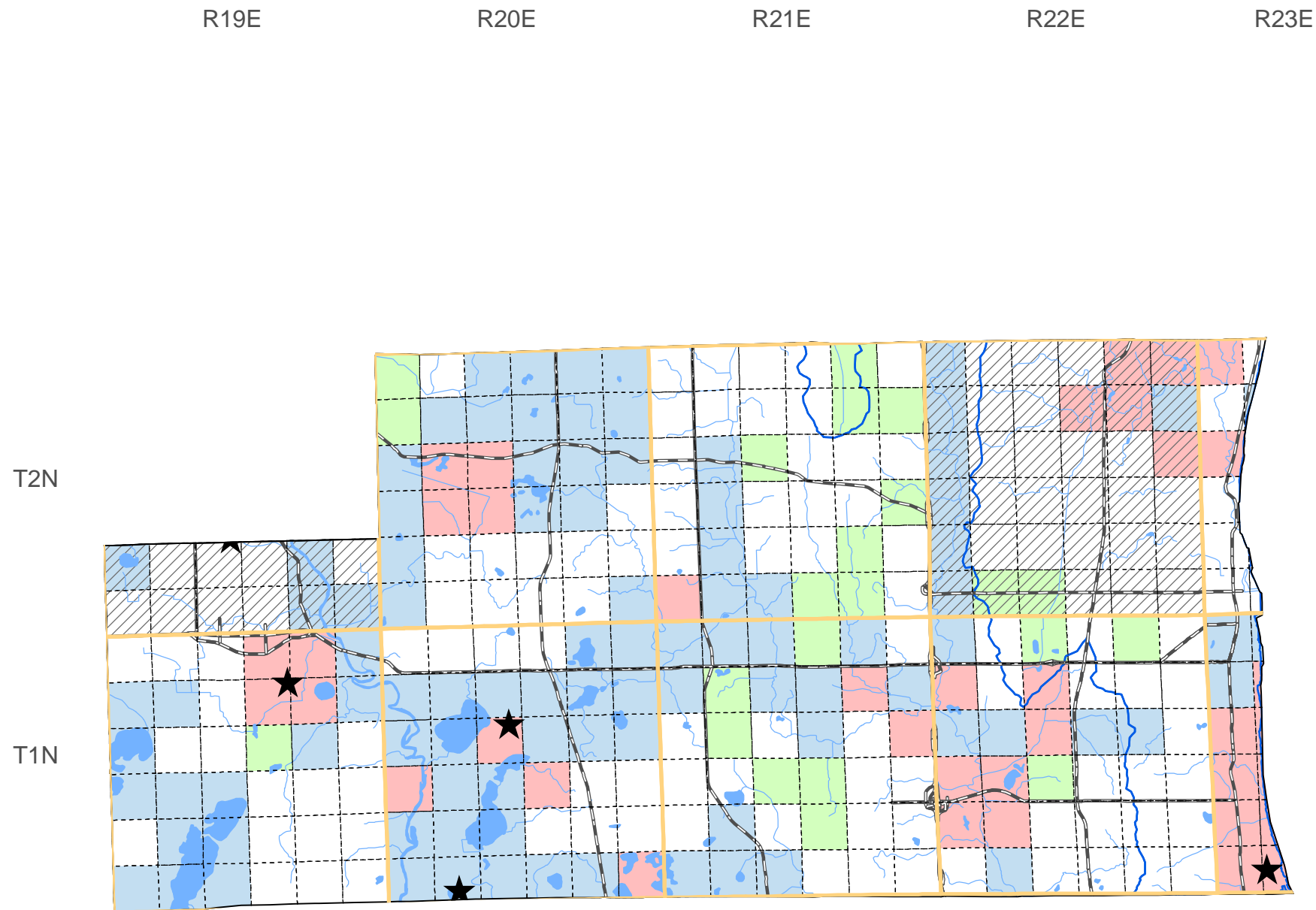
Dickcissel, *Spiza americana*, 2000
 Peregrine Falcon, *Falco peregrinus*, 2006
 Upland Sandpiper, *Bartramia longicauda*, 1999
 Henslow's Sparrow, *Ammodramus henslowii*, 1993
 Western Meadowlark, *Sturnella neglecta*, 1994
 Franklin's Ground Squirrel, *Spermophilus franklinii*, 2005
 Red-tailed Prairie Leafhopper, *Aftelia rubranura*, 2001

Plants

Twingleaf, *Jeffersonia diphylla*, 1991
 Swan Sedge, *Carex swanii*, 1900
 Low Calamint, *Calamintha arkanzana*, 2001
 Sand Reedgrass, *Calamovilfa longifolia* var. *magna*, 1992
 Seaside Spurge, *Euphorbia polygonifolia*, 1991
 Upland Boneset, *Eupatorium sessilifolium* var. *brittonianum*, 1976
 Yellow Gentian, *Gentiana alba*, 1933
 Purple Milkweed, *Asclepias purpurascens*, 1990
 Woolly Milkweed, *Asclepias lanuginosa*, 1970
 Pale Beardtongue, *Penstemon pallidus*, 1962
 Prairie Dunewort, *Botrychium campestre*, 2005
 Prairie Milkweed, *Asclepias sullivantii*, 2000
 Richardson Sedge, *Carex richardsonii*, 1966
 Smooth Black-haw, *Viburnum prunifolium*, 1997
 Reflexed Trillium, *Trillium recurvatum*, 2001
 American Fever-few, *Parthenium integrifolium*, 2002
 Cooper's Milkveitch, *Astragalus neglectus*, 1997
 Roundstem Foxglove, *Agalinis gattingeri*, 1985
 Wilcox Panic Grass, *Panicum wilcoxianum*, 1970
 Harbinger-of-spring, *Erigenia bulbosa*, 1898
 Pale False Foxglove, *Agalinis skinneriana*, 2000
 Great Indian-plantain, *Cacalia muehlenbergii*, 1898
 One-flowered Broomrape, *Orobanche uniflora*, 1992
 Prairie Indian Plantain, *Cacalia tuberosa*, 2002

Natural Communities

Mesic Prairie, Mesic prairie, 1992
 Dry-mesic Prairie, Dry-mesic prairie, 2001
 Southern Dry Forest, Southern dry forest, 1992
 Southern Mesic Forest, Southern mesic forest, 1992
 Southern Dry-mesic Forest, Southern dry-mesic forest, 2006



SPECIES and/or
NATURAL COMMUNITY



Aquatic



Terrestrial



Both



Township
Occurrences



Watershed
Boundaries



State
Natural Area



This map represents the known occurrences of rare species and natural communities that have been recorded in the Wisconsin Natural Heritage Inventory (NHI). Colored sections indicate the presence of one or more occurrences within that section. Hatched townships indicate one or more occurrences reported only at the township level. The date following the names above notes the most recent year the occurrence was recorded in the county.



ENDANGERED
RESOURCES

Map generated using NHI data from: 04/08/2009
 Copyright 2003, WDNR-Bureau of Endangered Resources
 This map may not be reproduced without prior written permission.