

Jefferson County

AQUATIC OCCURRENCES

Animal

Bald Eagle, *Haliaeetus leucocephalus*, 2008
 Black Tern, *Chlidonias niger*, 2004
 Queensnake, *Regina septemvittata*, 1894
 Weed Shiner, *Notropis texanus*, 1928
 Least Darter, *Etheostoma microperca*, 2005
 Jade Clubtail, *Argemphus submedianus*, 2003
 Lake Sturgeon, *Acipenser fulvescens*, 1979
 Piping Plover, *Charadrius melodus*, 1891
 Redfin Shiner, *Lythrurus umbratilis*, 1928
 Pugnose Minnow, *Opsopoeodus emiliae*, 1976
 Pugnose Shiner, *Notropis anogenus*, 2004
 River Redhorse, *Moxostoma carinatum*, 1995
 Slender Madtom, *Noturus exilis*, 1995
 Trumpeter Swan, *Cygnus buccinator*, 2000
 Lake Chubsucker, *Erismyzon sucetta*, 1995
 Banded Killifish, *Fundulus diaphanus*, 1995
 Greater Redhorse, *Moxostoma valenciennesi*, 2006
 American Bullfrog, *Lithobates catesbeianus*, 1987
 Blanding's Turtle, *Emydoidea blandingii*, 2008
 Liatris Borer Moth, *Papaipema beeriana*, 2002
 Silphium Borer Moth, *Papaipema siphii*, 2005
 Western Sand Darter, *Etheostoma clarum*, 1923
 Prothonotary Warbler, *Protonotaria citrea*, 2005
 Northern Cricket Frog, *Acris crepitans*, 1983
 Black-crowned Night-heron, *Nycticorax nycticorax*, 1977

Plants

Swamp-pink, *Arethusa bulbosa*, 1861
 Crawe Sedge, *Carex crawei*, 1948
 Cuckooflower, *Cardamine pratensis*, 2004
 Ohio Goldenrod, *Solidago ohioensis*, 2000
 Swamp Agrimony, *Agrimonia parviflora*, 2000
 Downy Willow-herb, *Epilobium strictum*, 2006
 Yellow Water Lily, *Nuphar advena*, 1943
 Crossleaf Milkwort, *Polygala cruciata*, 1885
 Marsh Blazing Star, *Liatris spicata*, 1981
 Slenderleaf Sundew, *Drosera linearis*, 1860
 Prairie Straw Sedge, *Carex suberecta*, 1950
 Few-flower Spikerush, *Eleocharis quinqueflora*, 2007
 Showy Lady's-slipper, *Cypripedium reginae*, 1984
 Sticky False-asphodel, *Tofieldia glutinosa*, 1991
 Common Bog Arrow-grass, *Triglochin maritima*, ?
 Lesser Fringed Gentian, *Gentianopsis procera*, 1976
 Small White Lady's-slipper, *Cypripedium candidum*, 2006
 Prairie White-fringed Orchid, *Platanthera leucophaea*, 2007
 Northern Yellow Lady's-slipper, *Cypripedium parviflorum* var. *makasin*, 1996

Natural Communities

Open Bog, Open bog, 1984
 Shrub-carr, Shrub-carr, 1984
 Wet Prairie, Wet prairie, 1984
 Calcareous Fen, Calcareous fen, 1984
 Emergent Marsh, Emergent marsh, 1986
 Lake-Hard Bog, Lake-hard bog, 1984
 Floodplain Forest, Floodplain forest, 1986
 Wet-mesic Prairie, Wet-mesic prairie, 2005
 Northern Wet Forest, Northern wet forest, 1984
 Southern Sedge Meadow, Southern sedge meadow, 2005
 Stream-Slow, Hard, Warm, Stream-slow, hard, warm, 1984
 Lake-Shallow, Hard, Seepage, Lake-shallow, hard, seepage, 1998
 Lake-Shallow, Hard, Drainage, Lake-shallow, hard, drainage, 1984
 Springs and Spring Runs, Hard, Springs and spring runs, hard, 1984
 Southern Tamarack Swamp (Rich), Southern tamarack swamp (rich), 1999

TERRESTRIAL OCCURRENCES

Animal

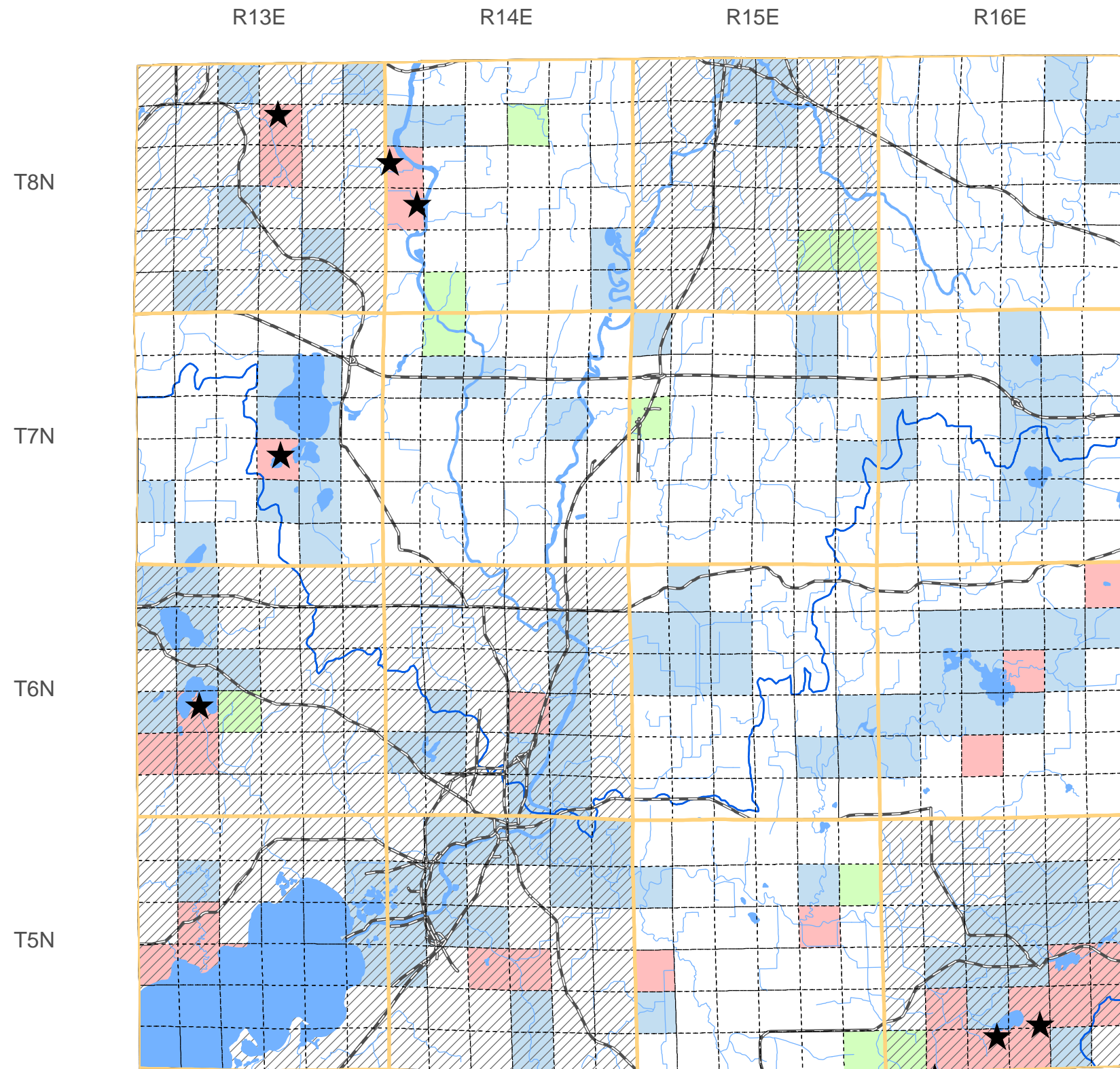
Barn Owl, *Tyto alba*, 1981
 A Leafhopper, *Flexamia prairiana*, 1996
 Bird Rookery, Bird Rookery, 1988
 Hooded Warbler, *Wilsonia citrina*, 1992
 Cerulean Warbler, *Dendroica cerulea*, 1992
 Kentucky Warbler, *Oporornis formosus*, 1999
 Upland Sandpiper, *Bartramia longicauda*, 1986
 Acadian Flycatcher, *Empidonax virescens*, 2005
 Yellow-billed Cuckoo, *Coccyzus americanus*, 2005
 Red-tailed Prairie Leafhopper, *Aflexia rubranura*, 2003

Plants

Kitten Tails, *Besseyia bullii*, 2003
 Yellow Gentian, *Gentiana alba*, 1993
 Purple Milkweed, *Asclepias purpurascens*, 1948
 Prairie Milkweed, *Asclepias sullivantii*, 2000
 Richardson Sedge, *Carex richardsonii*, 2001
 American Gromwell, *Lithospermum latifolium*, 2001
 Pale Green Orchid, *Platanthera flava* var. *herbiola*, 1865
 Prairie Sagebrush, *Artemisia frigida*, 1886
 Reflexed Trillium, *Trillium recurvatum*, 2002
 Yellow Giant Hyssop, *Agastache nepetoides*,
 Prairie Indian Plantain, *Cacalia tuberosa*, 2004
 Yellow Evening Primrose, *Calylophus serrulatus*, 1942

Natural Communities

Dry Prairie, Dry prairie, 2005
 Oak Opening, Oak opening, 1992
 Southern Dry Forest, Southern dry forest, 1984
 Southern Mesic Forest, Southern mesic forest, 2004
 Southern Dry-mesic Forest, Southern dry-mesic forest, 2006



SPECIES and/or
NATURAL COMMUNITY



Aquatic



Terrestrial



Both



Township
Occurrences



Watershed
Boundaries



State
Natural Area



This map represents the known occurrences of rare species and natural communities that have been recorded in the Wisconsin Natural Heritage Inventory (NHI). Colored sections indicate the presence of one or more occurrences within that section. Hatched townships indicate one or more occurrences reported only at the township level. The date following the names above notes the most recent year the occurrence was recorded in the county.

Map generated using NHI data from: 04/08/2009
 Copyright 2003, WDNR-Bureau of Endangered Resources
 This map may not be reproduced without prior written permission.



ENDANGERED
RESOURCES