

Green County

AQUATIC OCCURRENCES

Animal

Buckhorn, *Tritogonia verrucosa*, 1993
 Bald Eagle, *Haliaeetus leucocephalus*, 2007
 Gravel Chub, *Erimystax x-punctatus*, 1987
 Silver Chub, *Macrhybopsis storeniana*, 1974
 American Eel, *Anguilla rostrata*, 1974
 Least Darter, *Etheostoma microperca*, 2006
 Ozark Minnow, *Notropis nubilus*, 1976
 Redside Dace, *Clinostomus elongatus*, 2002
 Black Buffalo, *Ictiobus niger*, 2006
 Pallid Shiner, *Notropis amnis*, 1900
 Redfin Shiner, *Lythrurus umbratilis*, 2006
 River Redhorse, *Moxostoma carinatum*, 1974
 Slender Madtom, *Noturus exilis*, 1976
 Plains Clubtail, *Gomphurus externus*, 1989
 Blanding's Turtle, *Emydoidea blandingii*, 2008
 Eastern Massasauga, *Sistrurus catenatus catenatus*, 1982
 Starhead Topminnow, *Fundulus dispar*, 1983
 Red-shouldered Hawk, *Buteo lineatus*, 2008
 Silphium Borer Moth, *Papaipema silphii*, 1996
 A Flat-headed Mayfly, *Pseudiron centralis*, 1992
 A Brush-legged Mayfly, *Homooneuria ammophila*, 1992
 Northern Cricket Frog, *Acris crepitans*, 1988
 Russet-tipped Clubtail, *Stylurus plagiatus*, 1992
 A Common Burrower Mayfly, *Pentagenia vittigera*, 1991

Plants

Sycamore, *Platanus occidentalis*, 1976
 Vasey Rush, *Juncus vaseyi*, 1956
 Glade Mallow, *Napaea dioica*, 1994
 Whip Nутrush, *Scleria triglomerata*, 1950
 Pink Milkwort, *Polygala incarnata*, 1992
 Spreading Chervil, *Chaerophyllum procumbens*, 1993
 Roundfruit St. John's-wort, *Hypericum sphaerocarpon*, 1981
 Small White Lady's-slipper, *Cypripedium candidum*, 1930
 Sweet-scented Indian-plantain, *Cacalia suaveolens*, 1995
 Northern Yellow Lady's-slipper, *Cypripedium parviflorum var. makasin*, 1930

Natural Communities

Wet Prairie, Wet prairie, 1994
 Floodplain Forest, Floodplain forest, 1976
 Southern Sedge Meadow, Southern sedge meadow, 1976

TERRESTRIAL OCCURRENCES

Animal

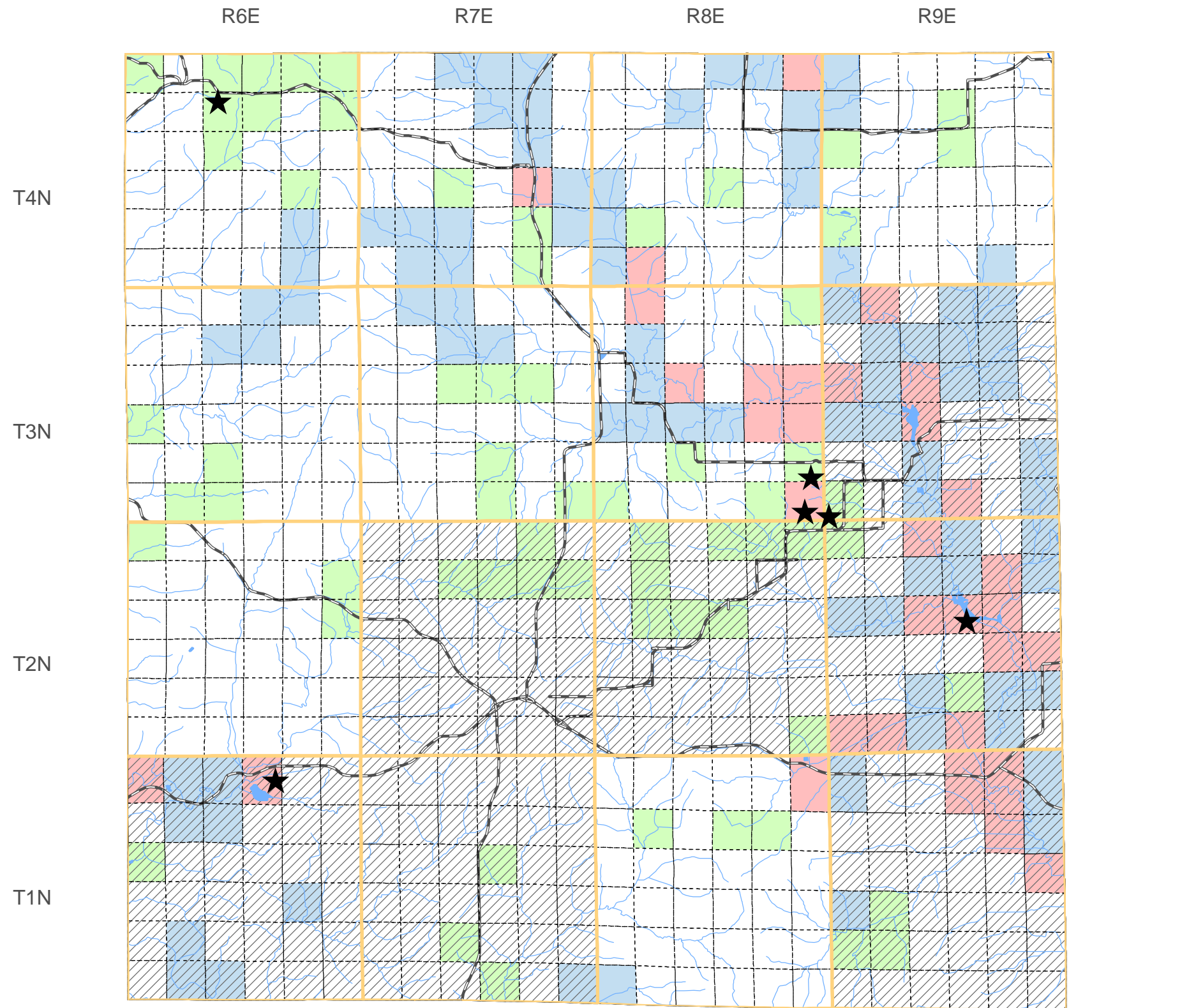
Barn Owl, *Tyto alba*, 1982
 Dickcissel, *Spiza americana*, 2004
 A Leafhopper, *Amplicephalus kansiensis*, 1996
 Bell's Vireo, *Vireo bellii*, 2006
 Bird Rookery, Bird Rookery, 2001
 Prairie Vole, *Microtus ochrogaster*, 1998
 Otter Skopier, *Hesperia ottoe*, 1997
 Cerulean Warbler, *Dendroica cerulea*, 1996
 Regal Frillary, *Speyeria idalia*, 2008
 Upland Sandpiper, *Bartramia longicauda*, 2004
 Henslow's Sparrow, *Ammodramus henslowii*, 2004
 Leonard's Skipper, *Hesperia leonardus*, 1979
 Loggerhead Shrike, *Lanius ludovicianus*, 1982
 Ornate Box Turtle, *Terrapene ornata*, 1988
 Western Meadowlark, *Lanius ludovicianus*, 1982
 Gorgone Checker Spot, *Chlosyne gorgone*, 1979
 Yellow-breasted Chat, *Icteria virens*, 1997
 Western Harvest Mouse, *Reithrodontomys megalotis*, 1998
 Short-winged Grasshopper, *Dichromorpha viridis*, 1999
 Whitney's Underwing Moth, *Catocala whitneyi*, 1994
 Abbreviated Underwing Moth, *Catocala abbreviatella*, 1994

Plants

Water-ash, *Ptelea trifoliata*, 1972
 Glade Fern, *Diplazium pycnocarpon*, 1932
 Marbleseed, *Onosmodium molle*, 1996
 Kitten Tails, *Besseyia bullii*, 2008
 Slender Sedge, *Carex gracilescens*, 1861
 Snowy Campion, *Silene nivea*, 1958
 Wild Hyacinth, *Camassia scilloides*, 1951
 Hill's Thistle, *Cirsium hillii*, 2001
 Prairie Turnip, *Pediomelum esculentum*, 2007
 Yellow Gentian, *Gentiana alba*, 2001
 Flodman Thistle, *Cirsium flodmanii*, 1947
 Nodding Pogonia, *Triphora trianthophora*, 1996
 Prairie Parsley, *Polytaenia nuttallii*, 1987
 Woolly Milkweed, *Asclepias lanuginosa*, 2007
 Broad Beech Fern, *Phegopteris hexagonoptera*, 1961
 Prairie Milkweed, *Asclepias sullivantii*, 1958
 Richardson Sedge, *Carex richardsonii*, 1995
 American Gromwell, *Lithospermum latifolium*, 1972
 Reflexed Trillium, *Trillium recurvatum*, 1993
 American Fever-few, *Parthenium integrifolium*, 2001
 Roundstem Foxglove, *Agalinis gattingeri*, 1973
 Short's Rock-cress, *Arabis shortii*, 1973
 Wilcox Panic Grass, *Panicum wilcoxianum*, 1968
 Clustered Broomrape, *Orobanche fasciculata*, 1938
 Prairie Bush-clover, *Lespedeza leptostachya*, 2002
 Yellow Giant Hyssop, *Agastache nepetoides*, 1991
 Purple Meadow-parsnip, *Thaspium trifoliatum var. flavum*, 1986
 Large Roundleaf Orchid, *Platanthera orbiculata*, 1972
 One-flowered Broomrape, *Orobanche uniflora*, 1970
 Pale-purple Coneflower, *Echinacea pallida*, 1996
 Rough Rattlesnake-root, *Prenanthes aspera*, 1997
 Prairie False-dandelion, *Microseris cuspidata*, 1933
 Prairie Indian Plantain, *Cacalia tuberosa*, 2007
 Nodding Rattlesnake-root, *Prenanthes crepidinea*, 1956

Natural Communities

Dry Cliff, Dry cliff, 1976
 Dry Prairie, Dry prairie, 2005
 Moist Cliff, Moist cliff, 1976
 Mesic Prairie, Mesic prairie, 1976
 Dry-mesic Prairie, Dry-mesic prairie, 1985
 Southern Dry Forest, Southern dry forest, 1976
 Southern Mesic Forest, Southern mesic forest, 2005
 Southern Dry-mesic Forest, Southern dry-mesic forest, 2005



SPECIES and/or NATURAL COMMUNITY | Aquatic | Terrestrial | Both | Township Occurrences | Watershed Boundaries | State Natural Area



This map represents the known occurrences of rare species and natural communities that have been recorded in the Wisconsin Natural Heritage Inventory (NHI). Colored sections indicate the presence of one or more occurrences within that section. Hatched townships indicate one or more occurrences reported only at the township level. The date following the names above notes the most recent year the occurrence was recorded in the county.

Map generated using NHI data from: 04/08/2009
 Copyright 2003, WDNR-Bureau of Endangered Resources
 This map may not be reproduced without prior written permission.

