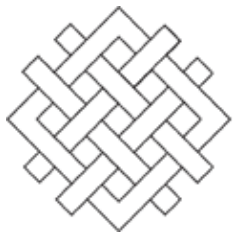


Options for WI GHG Reduction Targets



WORLD
RESOURCES
INSTITUTE

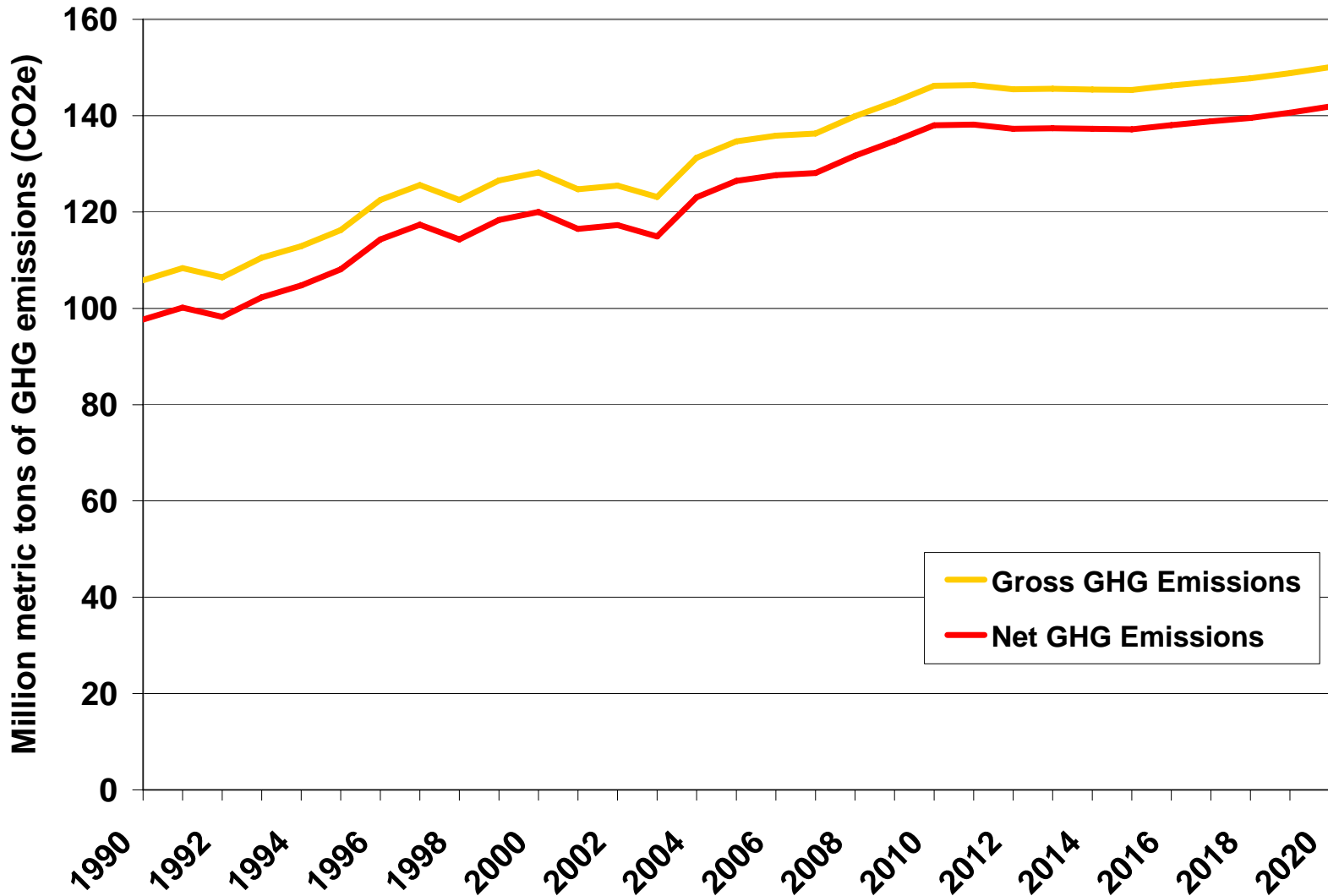
John Larsen, Associate
Climate and Energy Program
World Resources Institute
JLarsen@wri.org

Recommended baseline year: 2005

- Better data availability
- Looked at 2004-2006 average, no real difference
- Baseline and targets should consist of *net GHG emissions within Wisconsin*:
 - All in-state direct emissions of 6 Kyoto gases
 - All in-state net sequestration of carbon
 - Does not include out of state emissions associated with imported electricity
- Implementation of data recommendations will be critical to monitoring progress towards targets

TAG recommends targets should apply to *net* GHG emissions within WI

Historic and projected gross and net WI emissions, 1990-2020

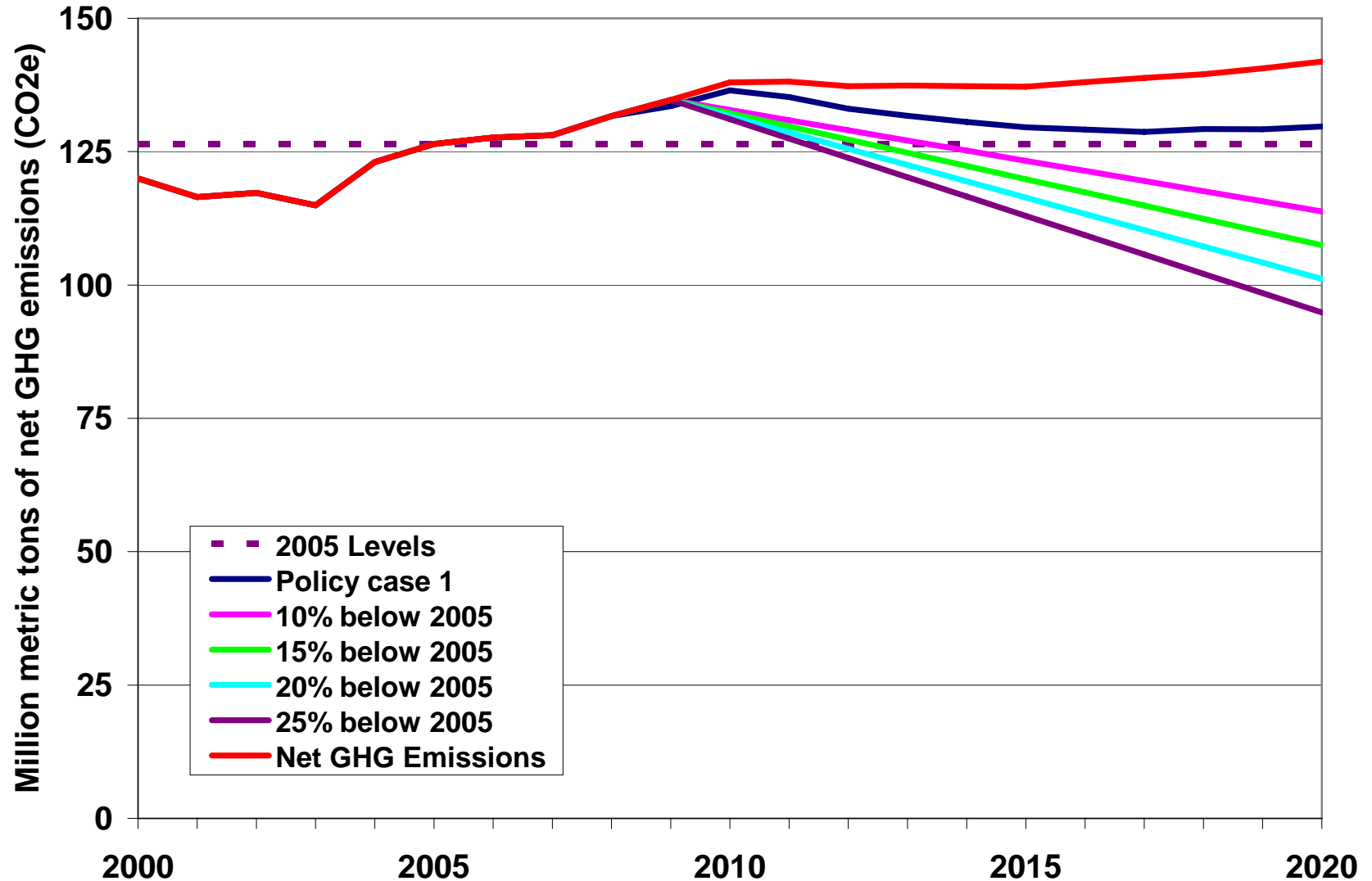


TAG target approach

- Provide illustrative targets to guide Task Force discussion
- Short-term targets (2020): 10 - 25 % reduction, based on other state/regional/federal targets
- Long-term targets (2050): 50 - 85% reduction, based on IPCC and other state/regional/federal targets
- Add context by comparing illustrative targets to reference case and other state/regional/federal targets with 2005 baseline

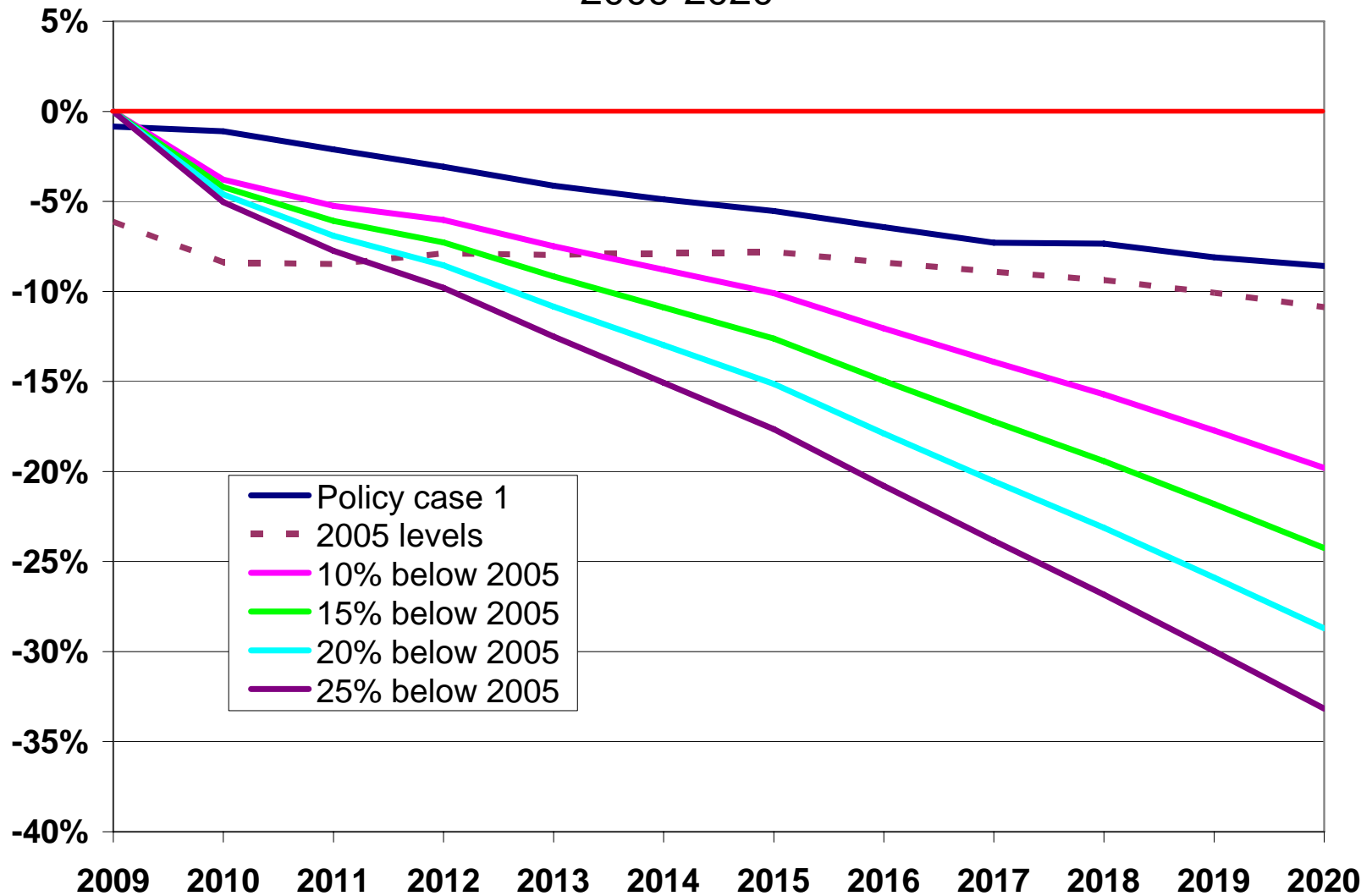
Target options vary in steepness of reductions

Historic and projected net WI GHG emissions, policy case one emissions and illustrative short-term reduction targets, 2000-2020



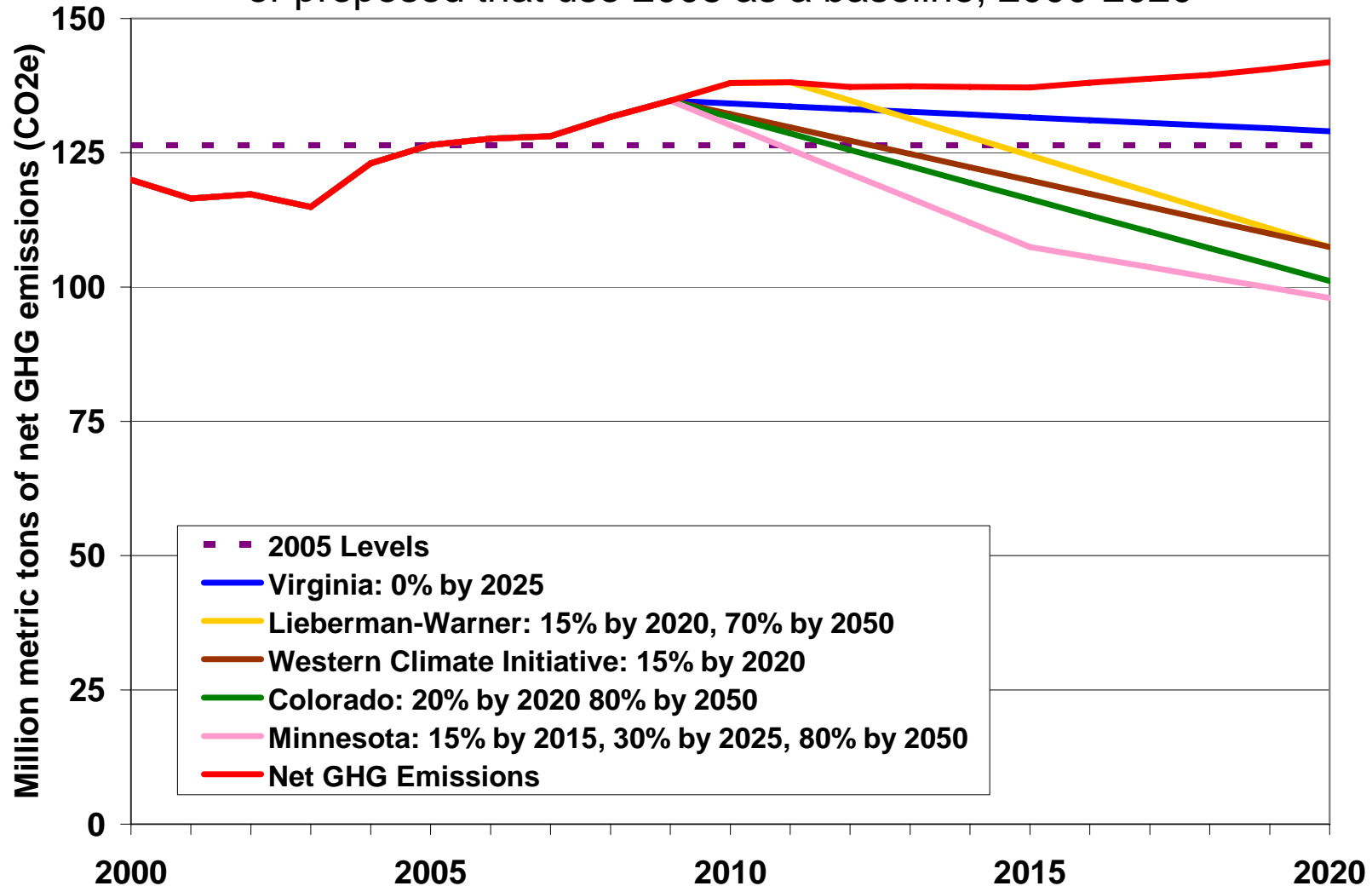
Reductions from 2005 levels yield large reductions from the reference case

Policy case one and illustrative target net GHG reductions from reference case, 2009-2020



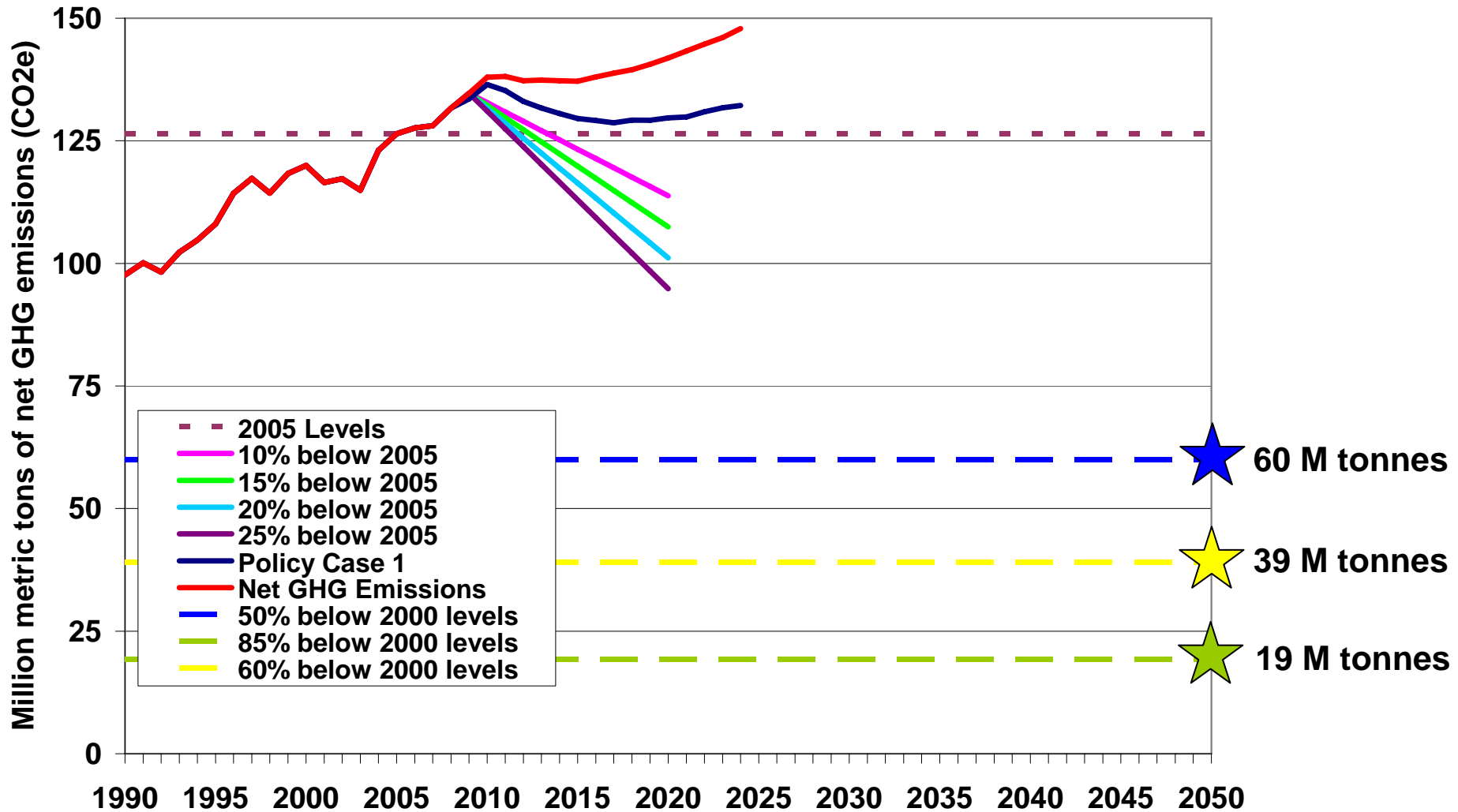
States and Feds have considered similar targets, vary in start dates, speed of reductions

Historic and projected net WI GHG emissions and reduction targets adopted or proposed that use 2005 as a baseline, 2000-2020



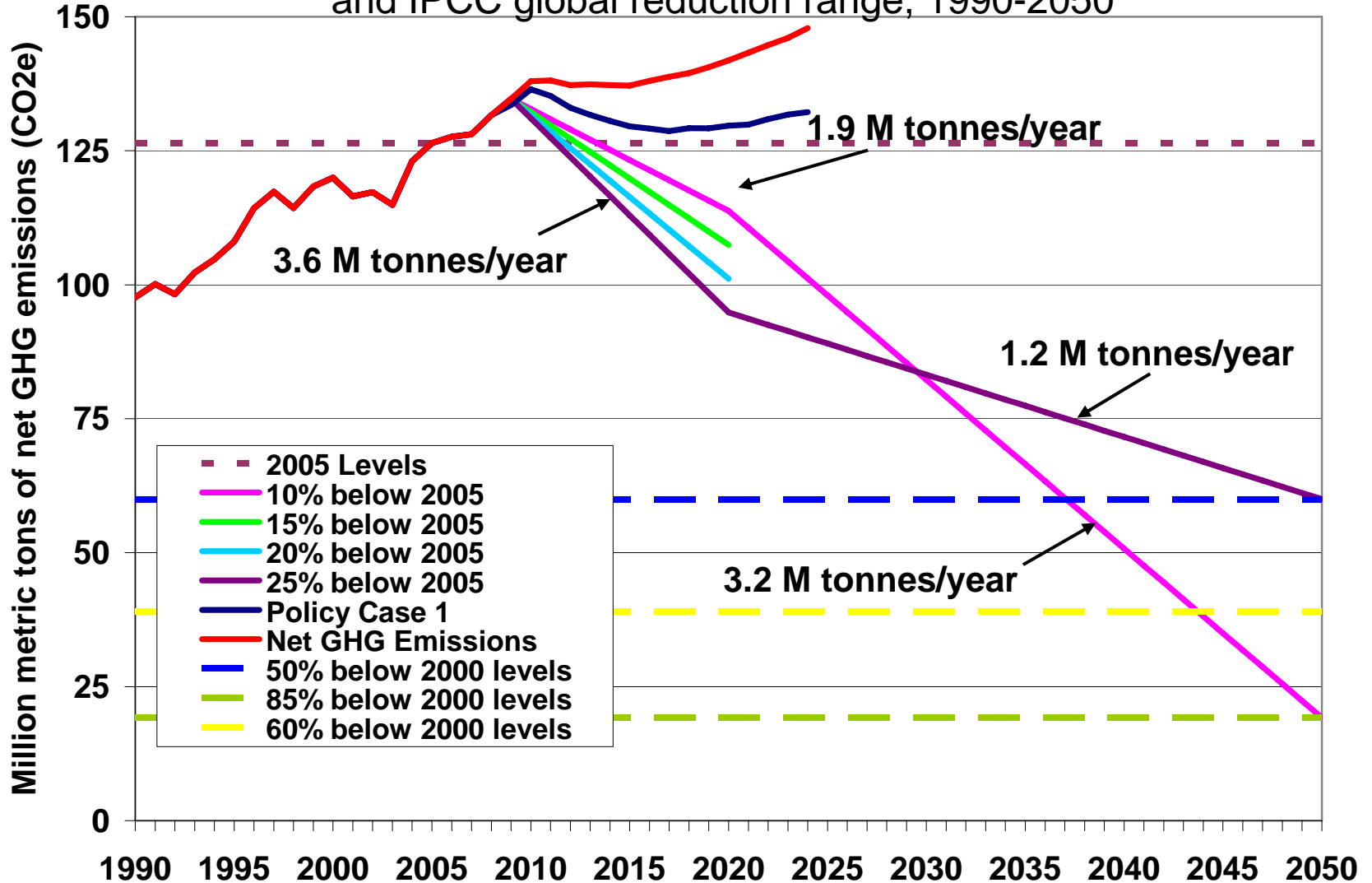
Short term targets set the stage for long term reductions

Historic and projected net WI emissions, Policy case one, Illustrative targets and IPCC global reduction range, 1990-2050



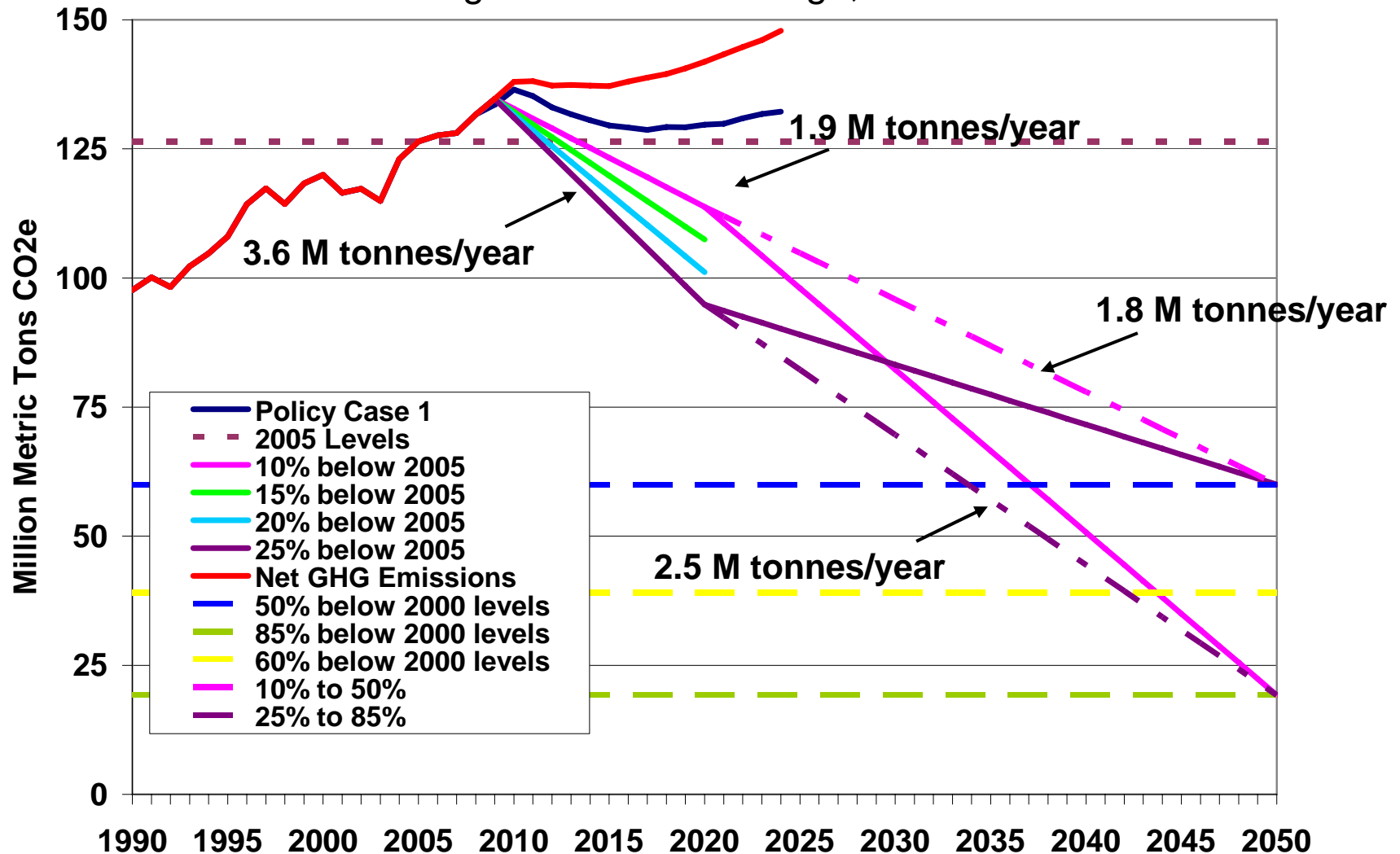
Reduction rates can vary greatly based on near and long term action

Historic and projected net WI emissions, Policy case one, Illustrative targets and IPCC global reduction range, 1990-2050



Reduction rates can vary greatly based on near and long term action

Historic and projected net WI emissions, Policy case one, Illustrative targets and IPCC global reduction range, 1990-2050





Comments & Questions