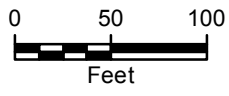


CITY: MPLS DIV/GROUP: IM/DV DB: MG LD: CK MADISON-KIPP
 G:\GIS\Projects\MadisonKipp\ArcMap2013-11\ProposedPAH_Details_20131114.mxd

LEGEND

- PROPOSED POLYNUCLEAR AROMATIC HYDROCARBON (PAH) SAMPLE LOCATIONS



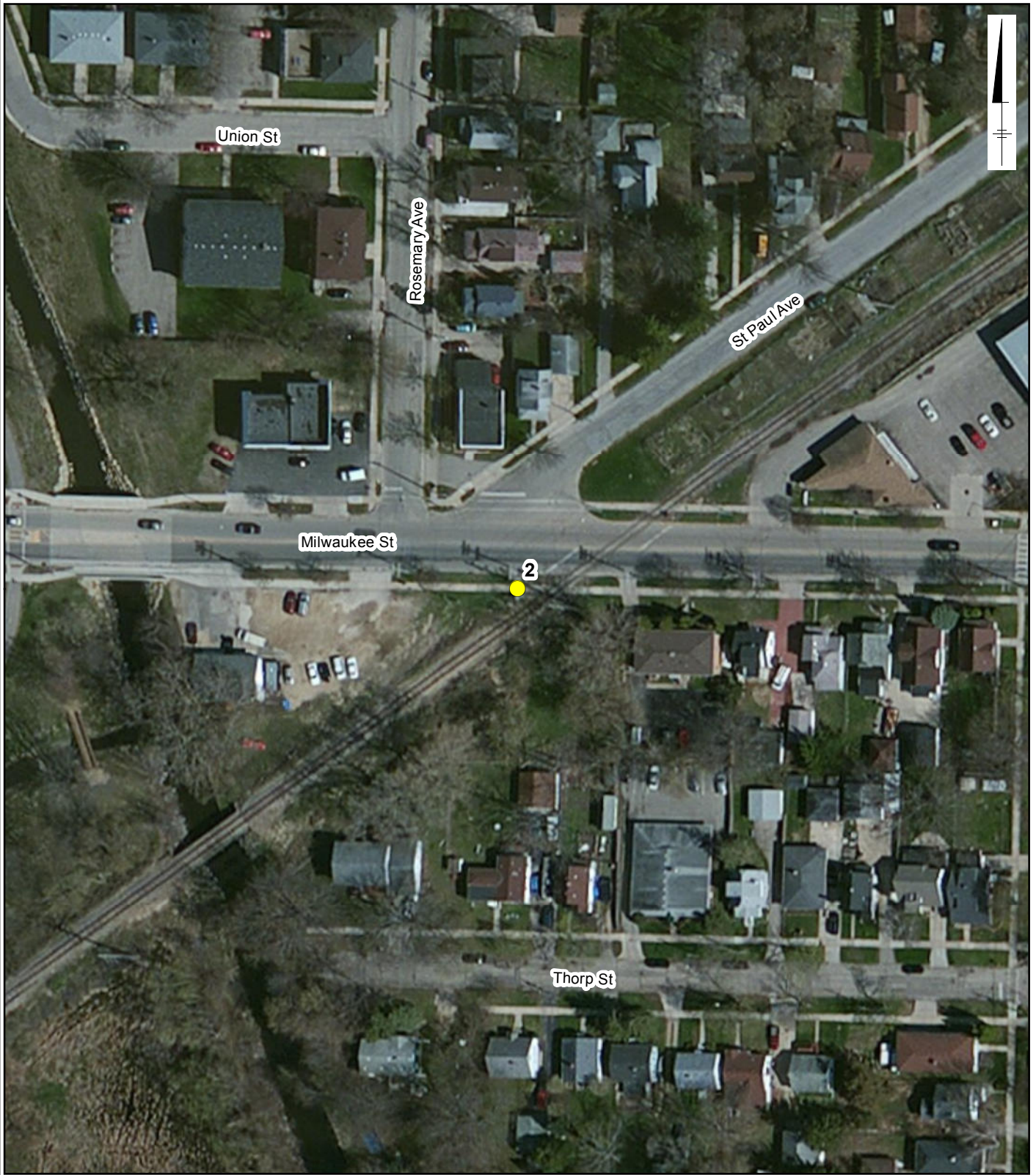
SERVICE LAYER CREDITS: SOURCE: ESRI, DIGITALGLOBE, GEOEYE, I-CUBED, USDA, USGS, AEX, GETMAPPING, AERGRID, IGN, IGP, SWISSTOPO, AND THE GIS USER COMMUNITY

MADISON-KIPP CORPORATION
 201 WAUBESA STREET
 MADISON, WISCONSIN

PROPOSED PAH SOIL SAMPLE LOCATIONS



FIGURE
2

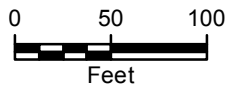


CITY: MPLS DIV/GROUP: IM/DV DB: MG LD: CK MADISON-KIPP
G:\GIS\Projects\MadisonKipp\ArcMap\2013-11\ProposedPAH_Details_20131114.mxd

LEGEND



PROPOSED POLYNUCLEAR AROMATIC
HYDROCARBON (PAH) SAMPLE LOCATIONS



SERVICE LAYER CREDITS: SOURCE: ESRI, DIGITALGLOBE,
GEOEYE, I-CUBED, USDA, USGS, AEX, GETMAPPING, AERGRID,
IGN, IGP, SWISSTOPO, AND THE GIS USER COMMUNITY

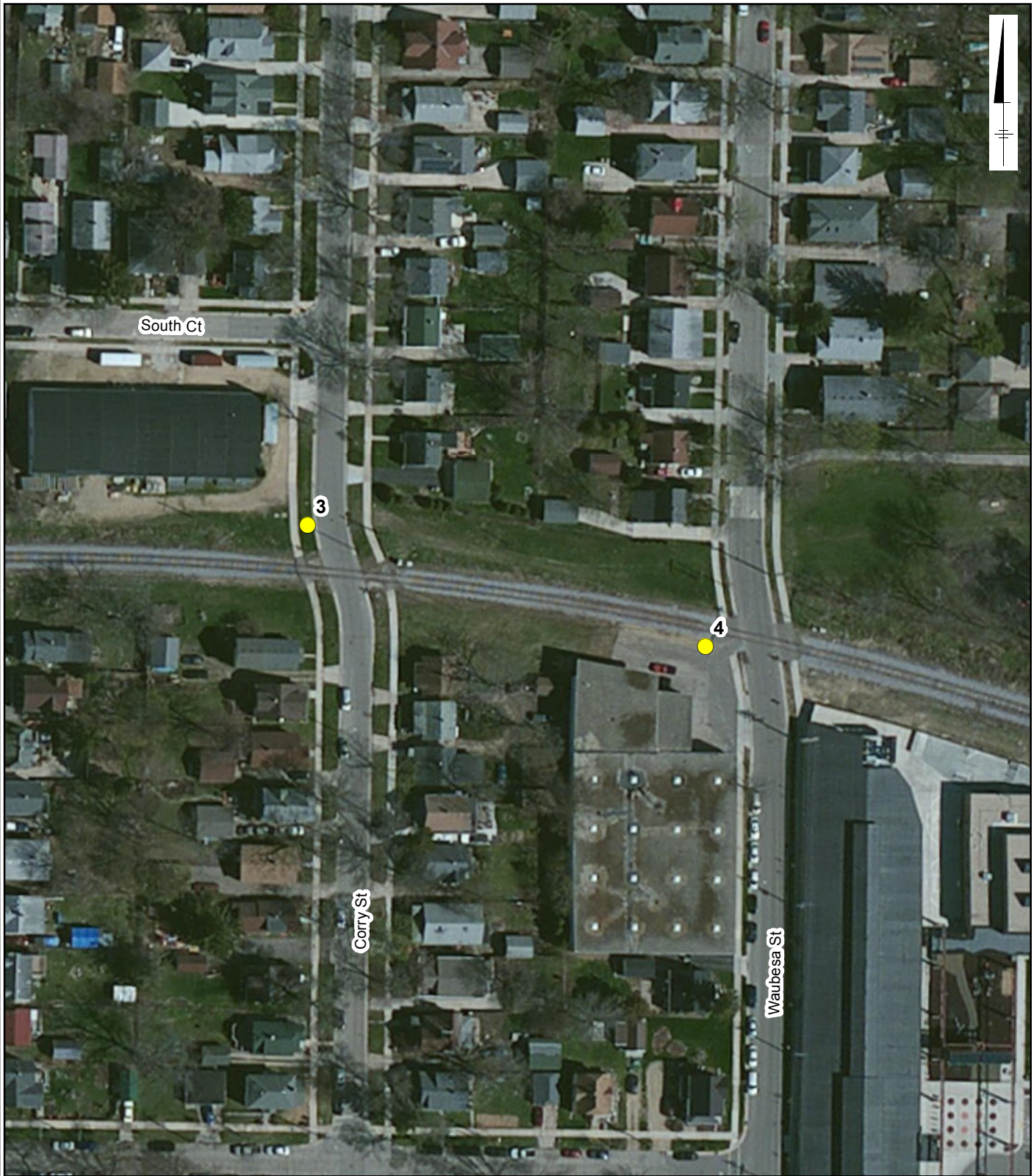
MADISON-KIPP CORPORATION
201 WAUBESA STREET
MADISON, WISCONSIN

**PROPOSED PAH SOIL
SAMPLE LOCATIONS**



**FIGURE
3**

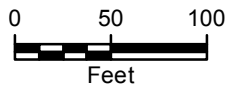
CITY: MPLS DIV/GROUP: IM/DV DB: MG LD: CK MADISON-KIPP
G:\GIS\Projects\MadisonKipp\ArcMap\2013-11\ProposedPAH_Details_20131114.mxd



LEGEND



PROPOSED POLYNUCLEAR AROMATIC
HYDROCARBON (PAH) SAMPLE LOCATIONS



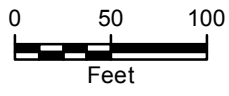
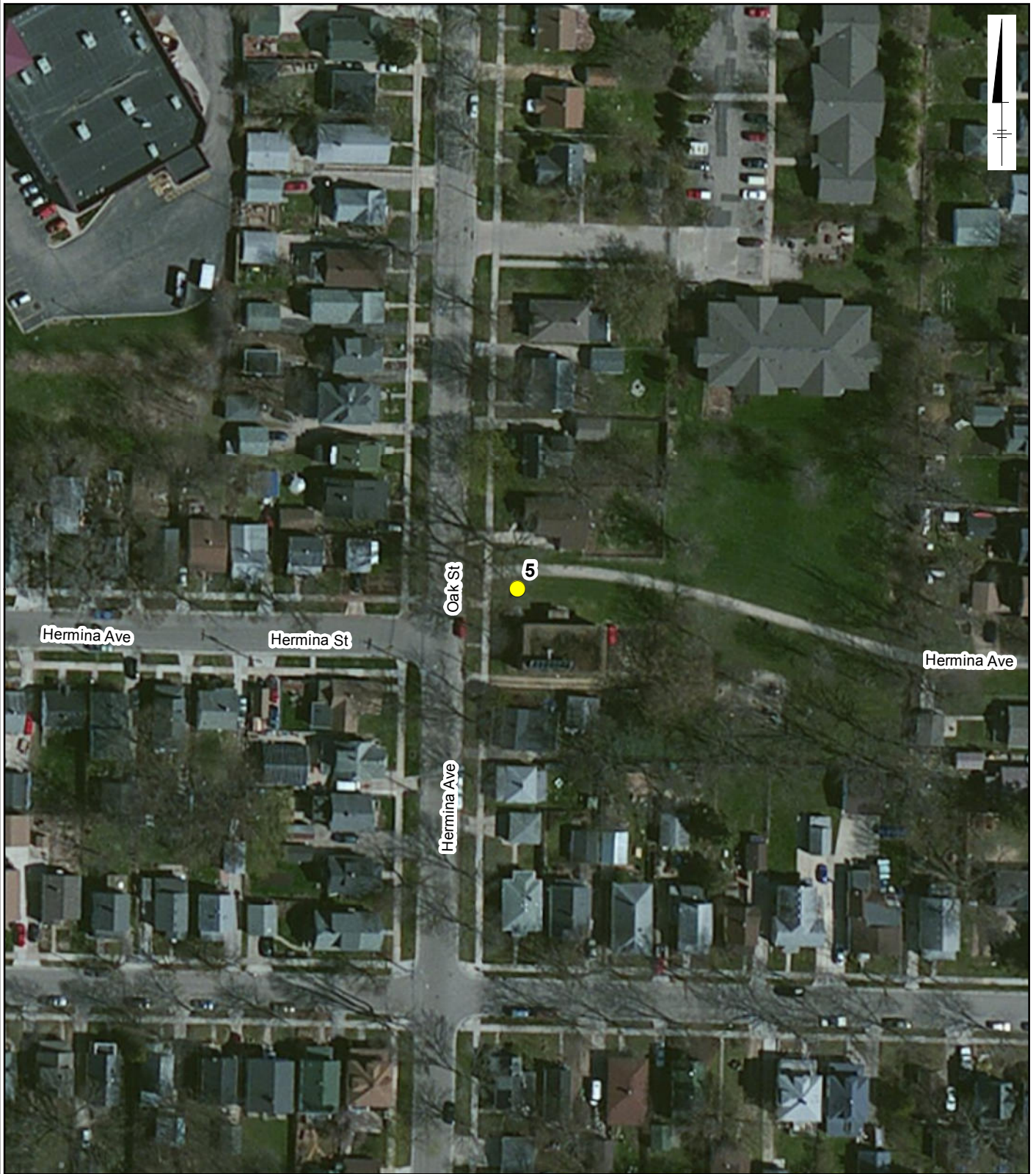
SERVICE LAYER CREDITS: SOURCE: ESRI, DIGITALGLOBE,
GEOEYE, I-CUBED, USDA, USGS, AEX, GETMAPPING, AERGRID,
IGN, IGP, SWISSTOPO, AND THE GIS USER COMMUNITY

MADISON-KIPP CORPORATION
201 WAUBESA STREET
MADISON, WISCONSIN

**PROPOSED PAH SOIL
SAMPLE LOCATIONS**



**FIGURE
4**



LEGEND

- PROPOSED POLYNUCLEAR AROMATIC HYDROCARBON (PAH) SAMPLE LOCATIONS

SERVICE LAYER CREDITS: SOURCE: ESRI, DIGITALGLOBE, GEOEYE, I-CUBED, USDA, USGS, AEX, GETMAPPING, AERGRID, IGN, IGP, SWISSTOPO, AND THE GIS USER COMMUNITY

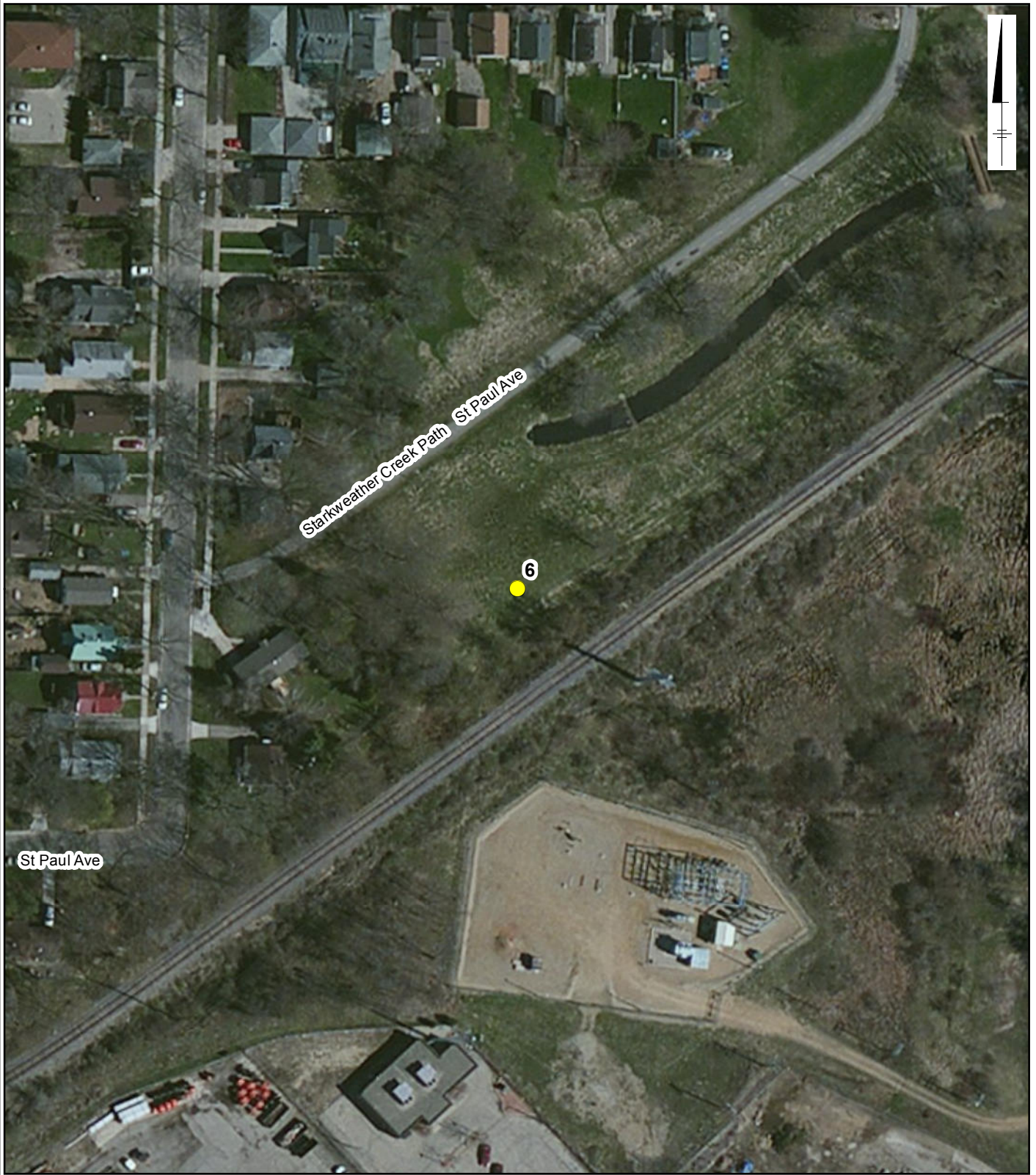
MADISON-KIPP CORPORATION
 201 WAUBESA STREET
 MADISON, WISCONSIN

**PROPOSED PAH SOIL
 SAMPLE LOCATIONS**



**FIGURE
 5**

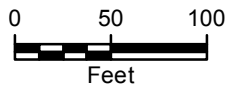
CITY: MPLS DIV/GROUP: IM/DV DB: MG LD: CK MADISON-KIPP
 G:\GIS\Projects\MadisonKipp\ArcMap\2013-11\ProposedPAH_Details_20131114.mxd



CITY: MPLS DIV/GROUP: IM/DV DB: MG LD: CK MADISON-KIPP
G:\GIS\Projects\MadisonKipp\ArcMap\2013-11\ProposedPAH_Details_20131114.mxd

LEGEND

- PROPOSED POLYNUCLEAR AROMATIC HYDROCARBON (PAH) SAMPLE LOCATIONS



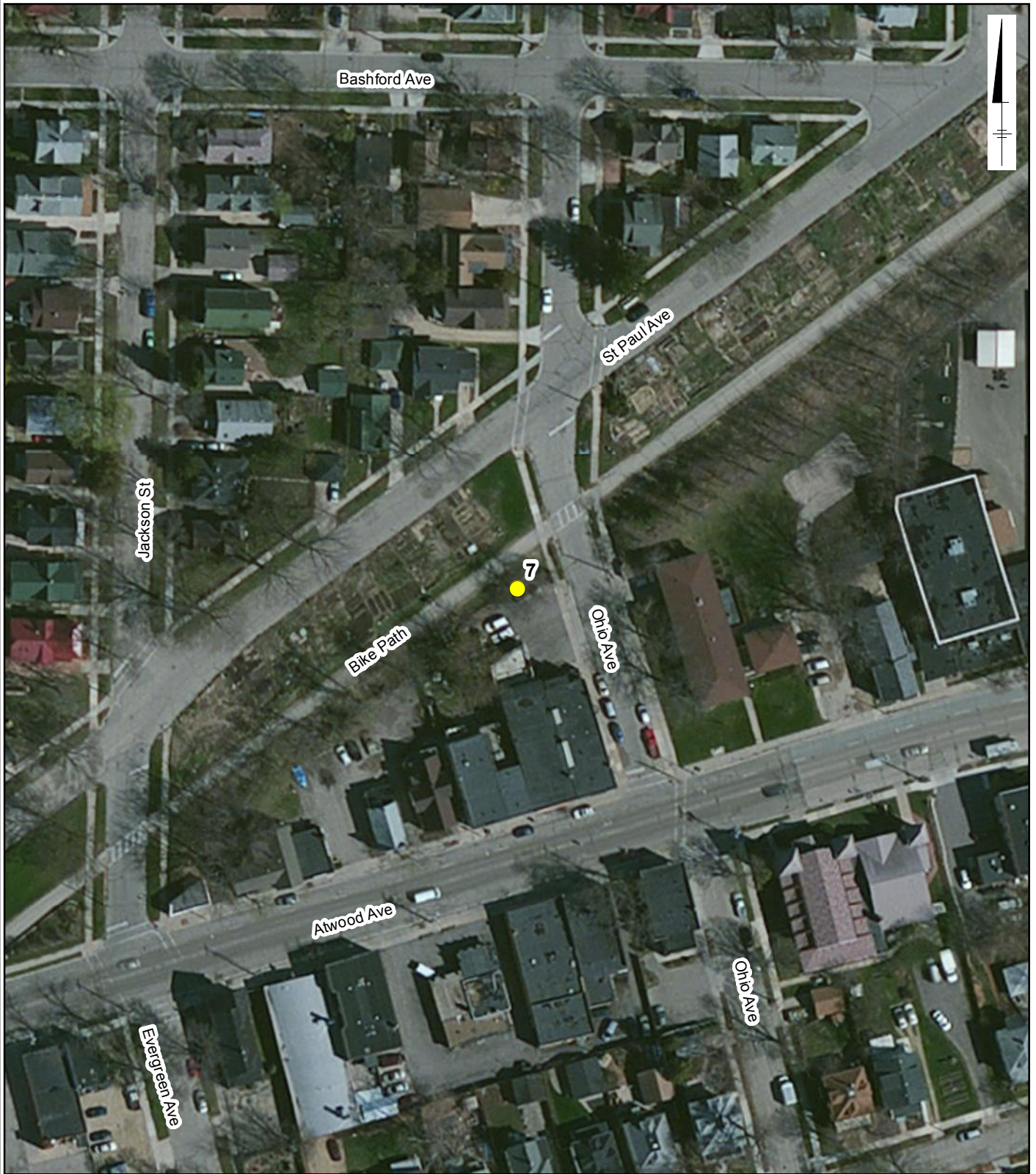
SERVICE LAYER CREDITS: SOURCE: ESRI, DIGITALGLOBE, GEOEYE, I-CUBED, USDA, USGS, AEX, GETMAPPING, AERGRID, IGN, IGP, SWISSTOPO, AND THE GIS USER COMMUNITY

MADISON-KIPP CORPORATION
201 WAUBESA STREET
MADISON, WISCONSIN

**PROPOSED PAH SOIL
SAMPLE LOCATIONS**



**FIGURE
6**

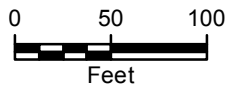


CITY: MPLS DIV/GROUP: IM/DV DB: MG LD: CK MADISON-KIPP
 G:\GIS\Projects\MadisonKipp\ArcMap\2013-11\ProposedPAH_Details_20131114.mxd

LEGEND



PROPOSED POLYNUCLEAR AROMATIC
 HYDROCARBON (PAH) SAMPLE LOCATIONS



SERVICE LAYER CREDITS: SOURCE: ESRI, DIGITALGLOBE,
 GEOEYE, I-CUBED, USDA, USGS, AEX, GETMAPPING, AERGRID,
 IGN, IGP, SWISSTOPO, AND THE GIS USER COMMUNITY

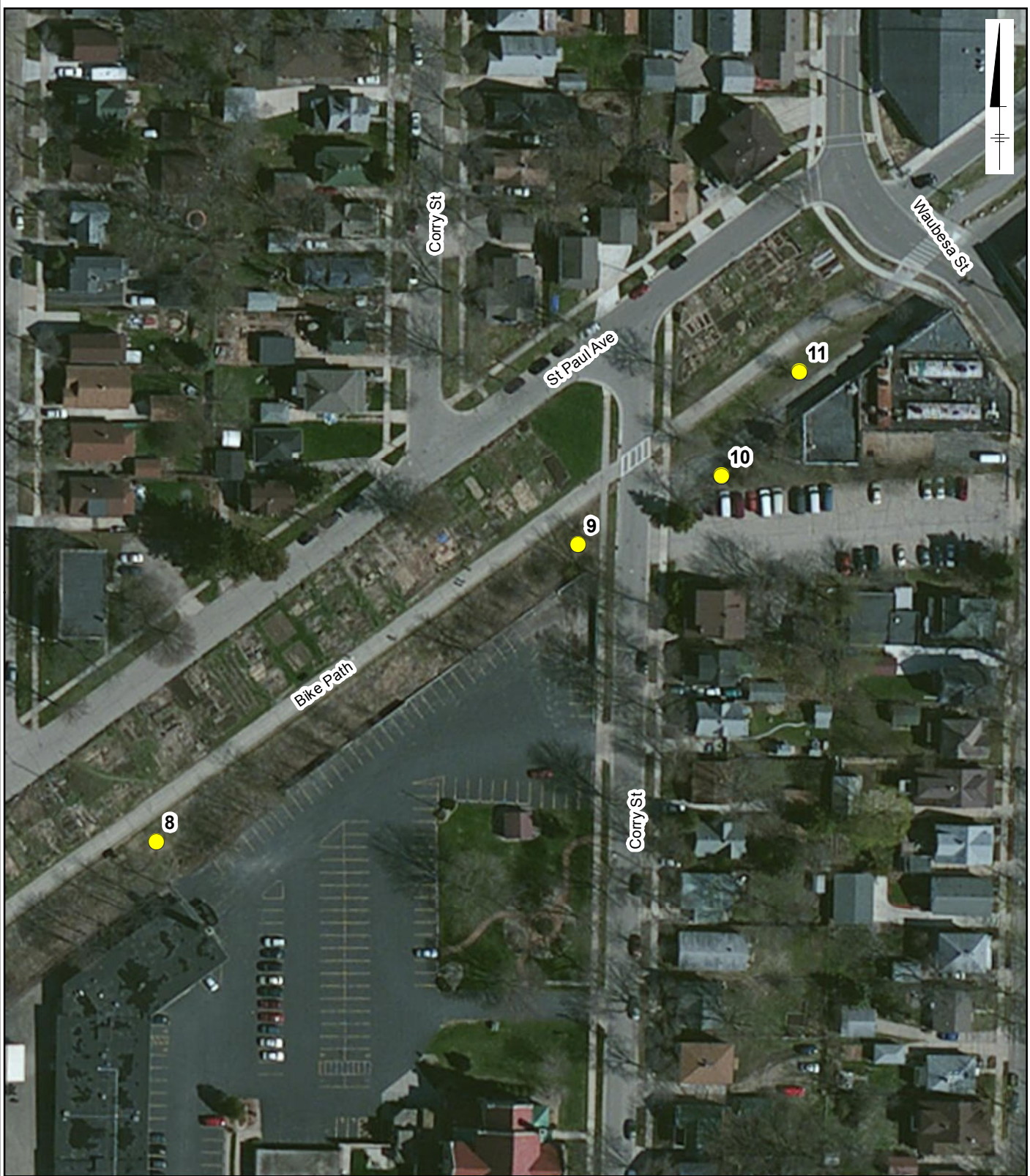
MADISON-KIPP CORPORATION
 201 WAUBESA STREET
 MADISON, WISCONSIN

**PROPOSED PAH SOIL
 SAMPLE LOCATIONS**



**FIGURE
 7**

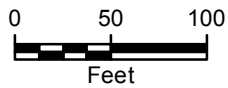
CITY: MPLS DIV/GROUP: IM/DV DB: MG LD: CK MADISON-KIPP
G:\GIS\Projects\MadisonKipp\ArcMap\2013-11\ProposedPAH_Details_20131114.mxd



LEGEND



PROPOSED POLYNUCLEAR AROMATIC
HYDROCARBON (PAH) SAMPLE LOCATIONS



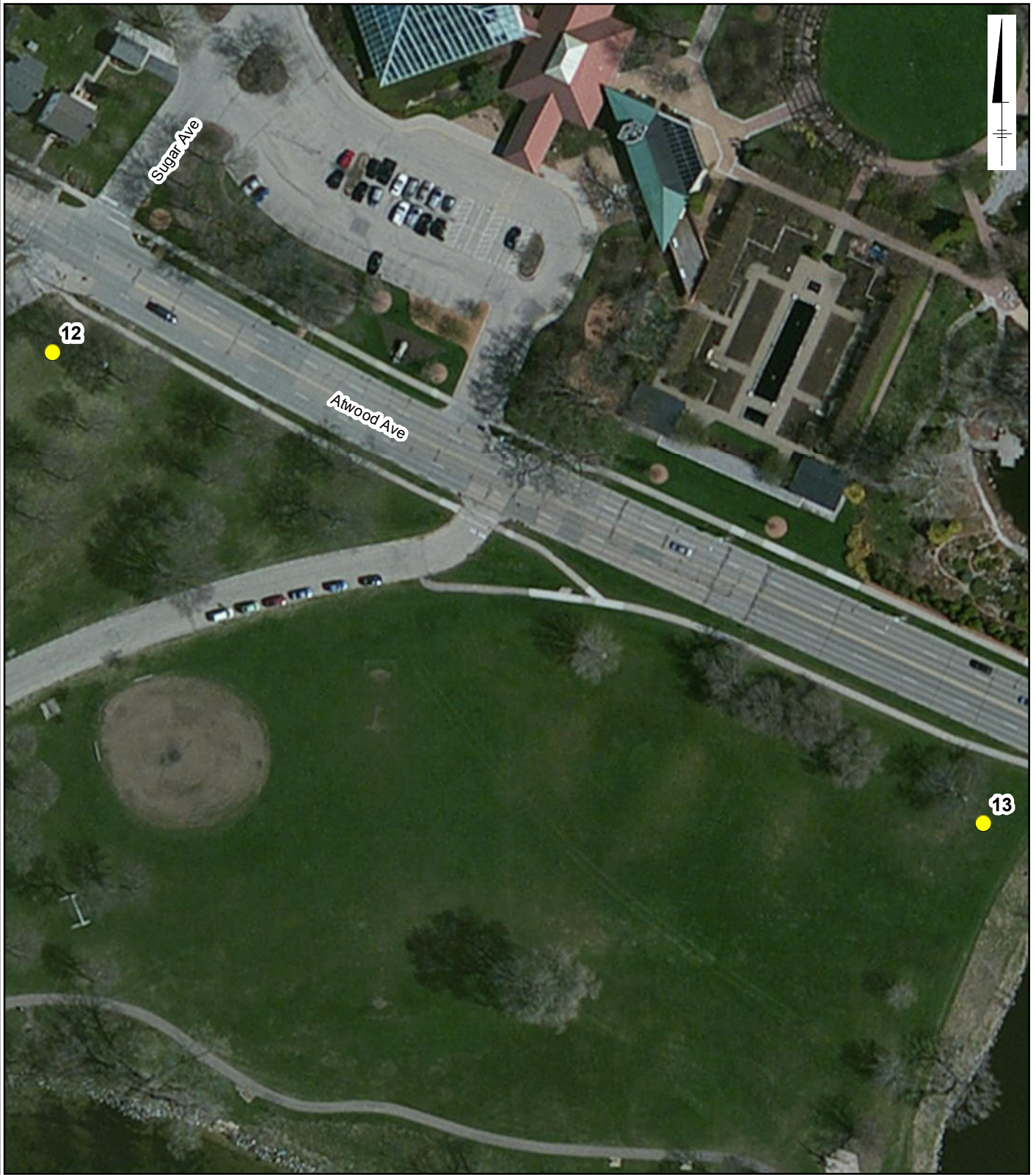
SERVICE LAYER CREDITS: SOURCE: ESRI, DIGITALGLOBE,
GEOEYE, I-CUBED, USDA, USGS, AEX, GETMAPPING, AERGRID,
IGN, IGP, SWISSTOPO, AND THE GIS USER COMMUNITY

MADISON-KIPP CORPORATION
201 WAUBESA STREET
MADISON, WISCONSIN

**PROPOSED PAH SOIL
SAMPLE LOCATIONS**



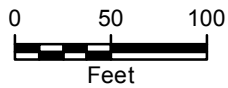
FIGURE
8



CITY: MPLS DIV/GROUP: IM/DV DB: MG LD: CK MADISON-KIPP
 G:\GIS\Projects\MadisonKipp\ArcMap2013-11\ProposedPAH_Details_20131114.mxd

LEGEND

- PROPOSED POLYNUCLEAR AROMATIC HYDROCARBON (PAH) SAMPLE LOCATIONS



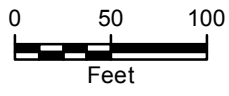
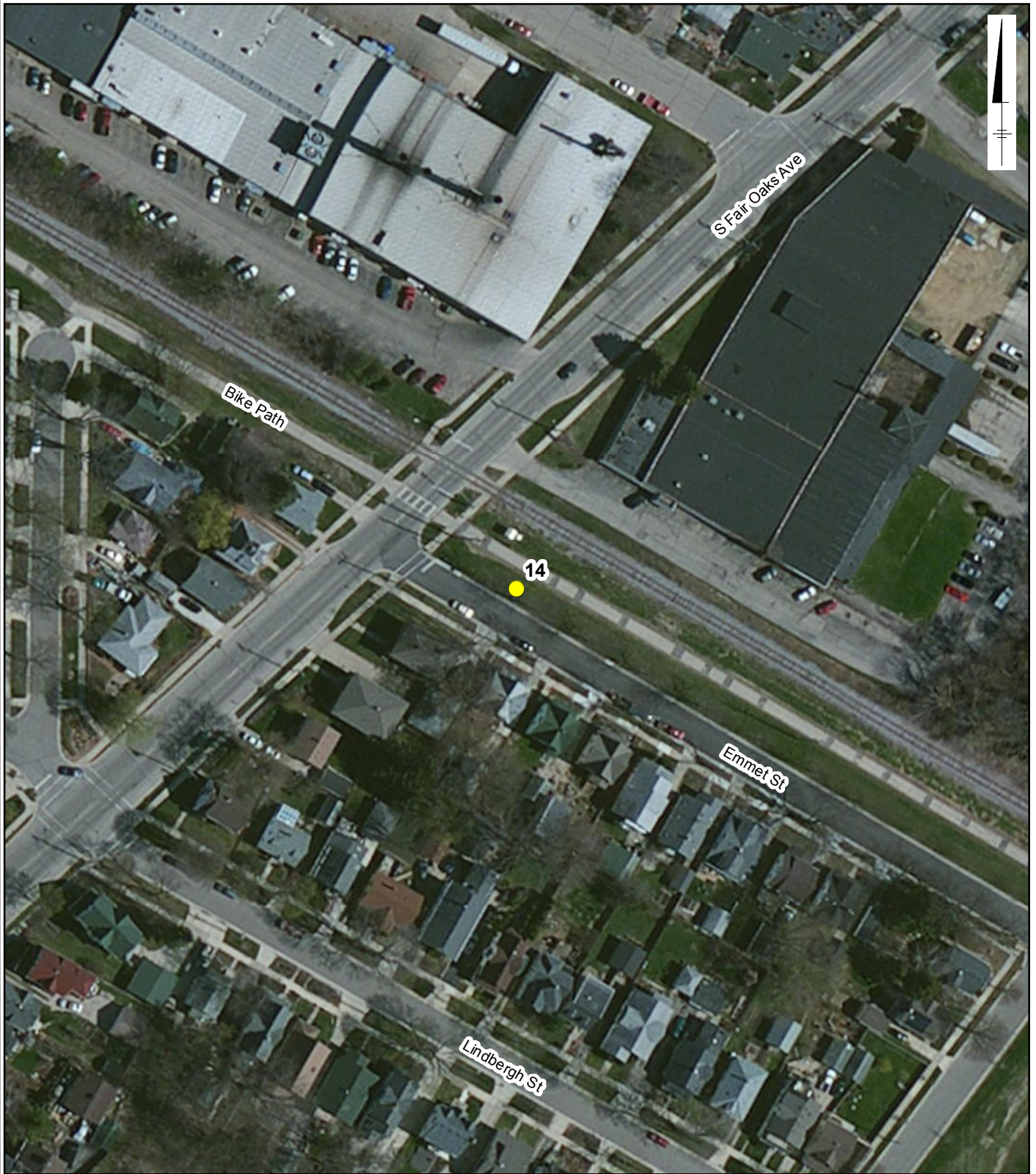
SERVICE LAYER CREDITS: SOURCE: ESRI, DIGITALGLOBE, GEOEYE, I-CUBED, USDA, USGS, AEX, GETMAPPING, AEROGRIID, IGN, IGP, SWISSTOPO, AND THE GIS USER COMMUNITY

MADISON-KIPP CORPORATION
 201 WAUBESA STREET
 MADISON, WISCONSIN

**PROPOSED PAH SOIL
 SAMPLE LOCATIONS**



**FIGURE
 9**



LEGEND

- PROPOSED POLYNUCLEAR AROMATIC HYDROCARBON (PAH) SAMPLE LOCATIONS

MADISON-KIPP CORPORATION
 201 WAUBESA STREET
 MADISON, WISCONSIN

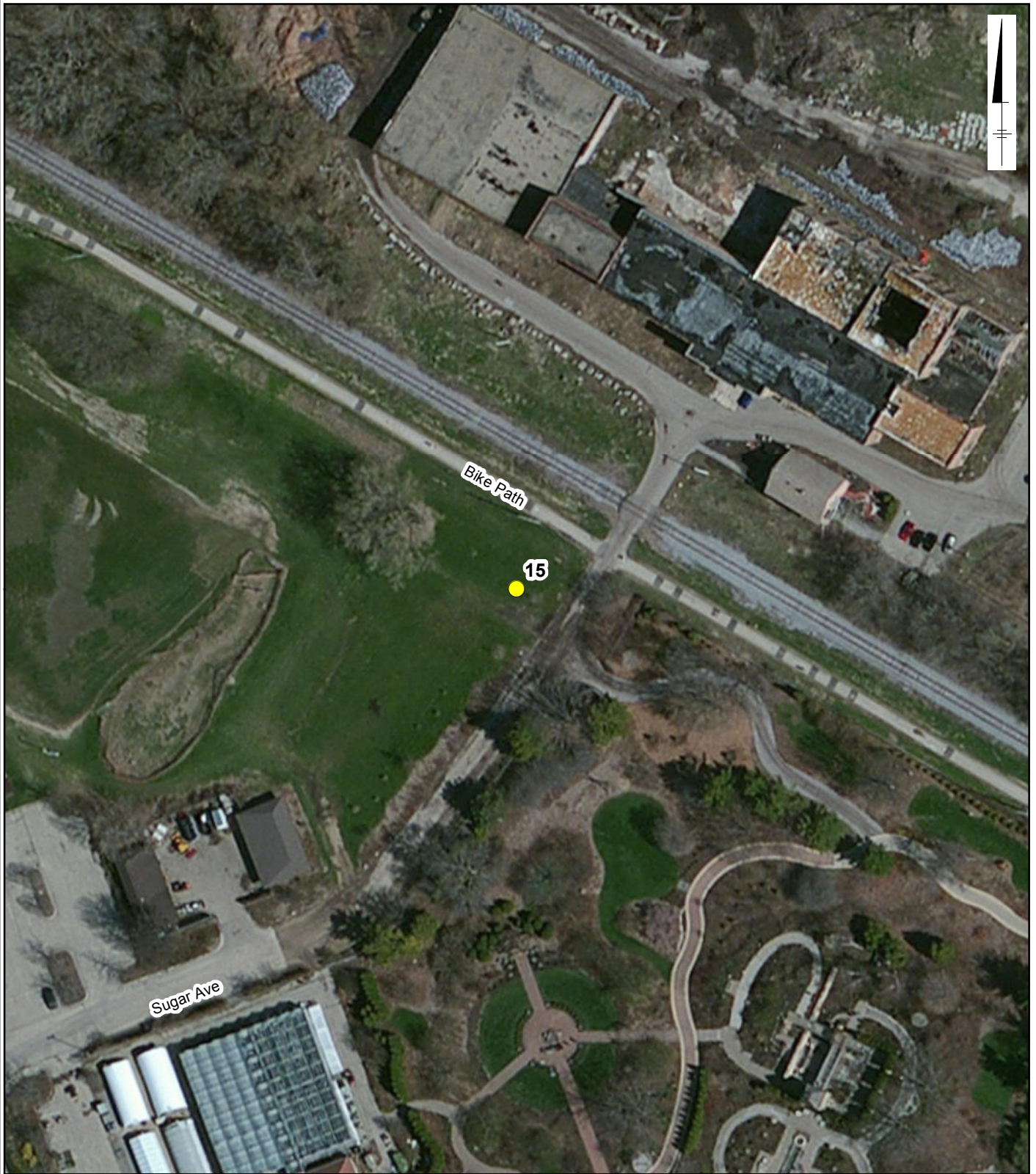
**PROPOSED PAH SOIL
 SAMPLE LOCATIONS**



**FIGURE
 10**

SERVICE LAYER CREDITS: SOURCE: ESRI, DIGITALGLOBE, GEOEYE, I-CUBED, USDA, USGS, AEX, GETMAPPING, AEROGRIID, IGN, IGP, SWISSTOPO, AND THE GIS USER COMMUNITY

CITY: MPLS DIV/GROUP: IM/DV DB: MG LD: CK MADISON-KIPP
 G:\GIS\Projects\MadisonKipp\ArcMap\2013-11\ProposedPAH_Details_20131114.mxd

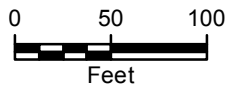


CITY: MPLS DIV/GROUP: IM/DV DB: MG LD: CK MADISON-KIPP
 G:\GIS\Projects\MadisonKipp\ArcMap\2013-11\ProposedPAH_Details_20131114.mxd

LEGEND



PROPOSED POLYNUCLEAR AROMATIC
 HYDROCARBON (PAH) SAMPLE LOCATIONS



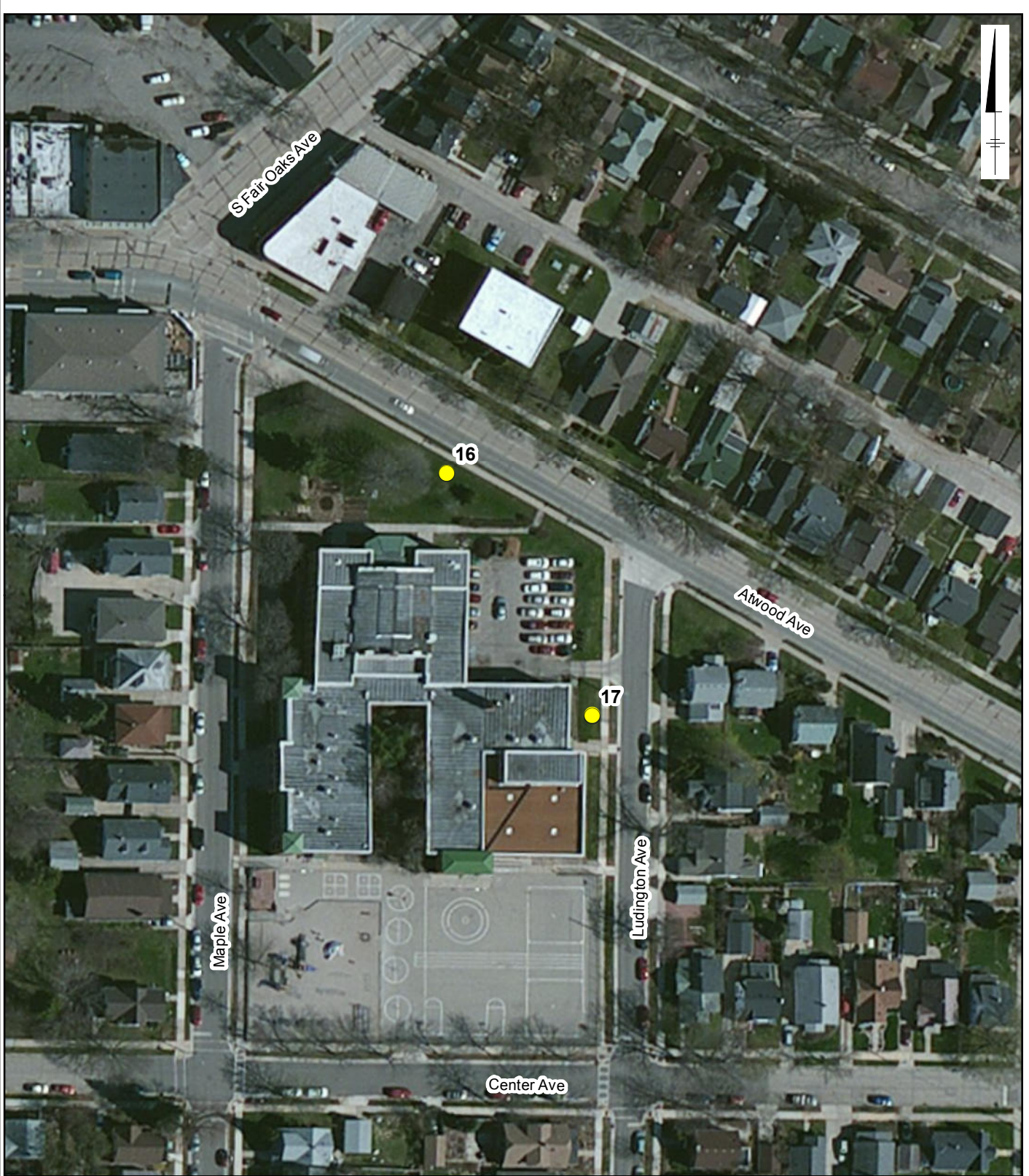
SERVICE LAYER CREDITS: SOURCE: ESRI, DIGITALGLOBE,
 GEOEYE, I-CUBED, USDA, USGS, AEX, GETMAPPING, AERGRID,
 IGN, IGP, SWISSTOPO, AND THE GIS USER COMMUNITY

MADISON-KIPP CORPORATION
 201 WAUBESA STREET
 MADISON, WISCONSIN

**PROPOSED PAH SOIL
 SAMPLE LOCATIONS**



**FIGURE
 11**

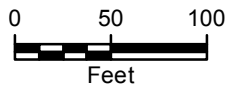


CITY: MPLS DIV/GROUP: IM/DV DB: MG LD: CK MADISON-KIPP
 G:\GIS\Projects\MadisonKipp\ArcMap\2013-11\ProposedPAH_Details_20131114.mxd

LEGEND



PROPOSED POLYNUCLEAR AROMATIC
 HYDROCARBON (PAH) SAMPLE LOCATIONS



SERVICE LAYER CREDITS: SOURCE: ESRI, DIGITALGLOBE,
 GEOEYE, I-CUBED, USDA, USGS, AEX, GETMAPPING, AERGRID,
 IGN, IGP, SWISSTOPO, AND THE GIS USER COMMUNITY

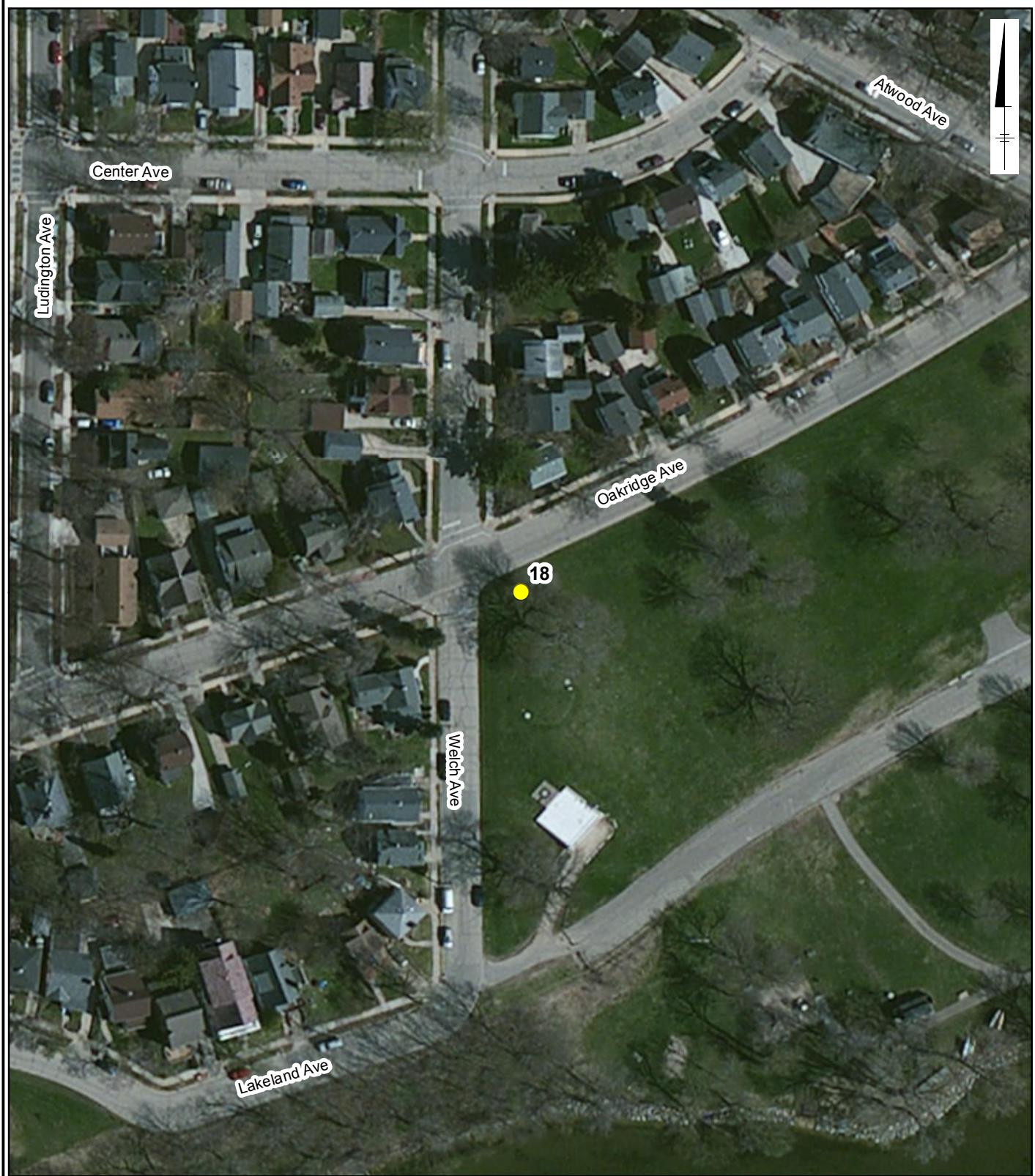
MADISON-KIPP CORPORATION
 201 WAUBESA STREET
 MADISON, WISCONSIN

**PROPOSED PAH SOIL
 SAMPLE LOCATIONS**




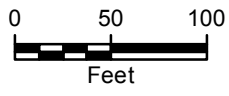
**FIGURE
 12**

CITY: MPLS DIV/GROUP: IM/DV DB: MG LD: CK MADISON-KIPP
G:\GIS\Projects\MadisonKipp\ArcMap\2013-11\ProposedPAH_Details_20131114.mxd



LEGEND

-  PROPOSED POLYNUCLEAR AROMATIC HYDROCARBON (PAH) SAMPLE LOCATIONS



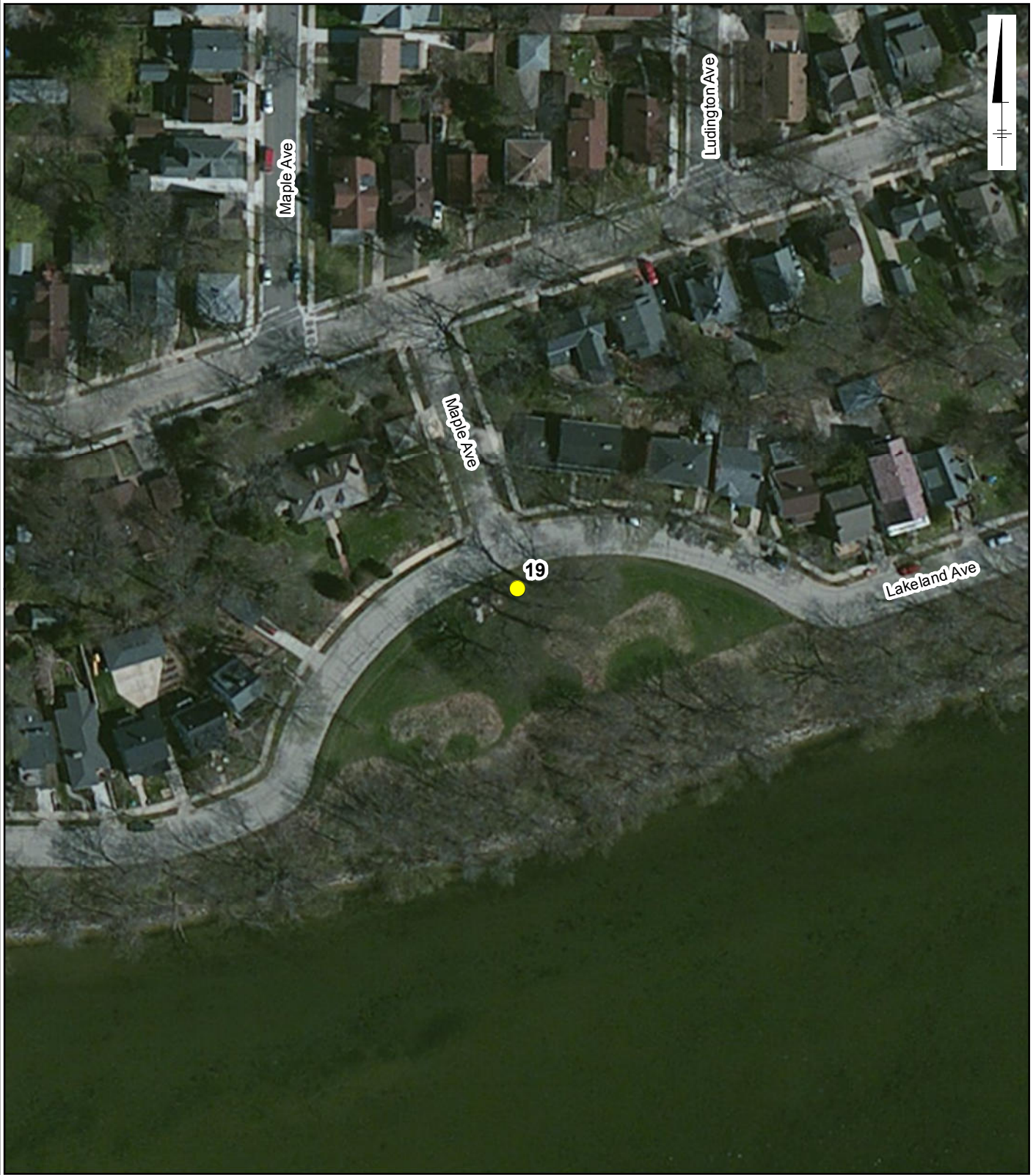
SERVICE LAYER CREDITS: SOURCE: ESRI, DIGITALGLOBE, GEOEYE, I-CUBED, USDA, USGS, AEX, GETMAPPING, AEROGRIID, IGN, IGP, SWISSTOPO, AND THE GIS USER COMMUNITY

MADISON-KIPP CORPORATION
201 WAUBESA STREET
MADISON, WISCONSIN

**PROPOSED PAH SOIL
SAMPLE LOCATIONS**



**FIGURE
13**

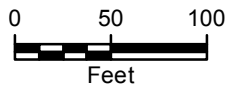


CITY: MPLS DIV/GROUP: IM/DV DB: MG LD: CK MADISON-KIPP
 G:\GIS\Projects\MadisonKipp\ArcMap\2013-11\ProposedPAH_Details_20131114.mxd

LEGEND



PROPOSED POLYNUCLEAR AROMATIC
 HYDROCARBON (PAH) SAMPLE LOCATIONS



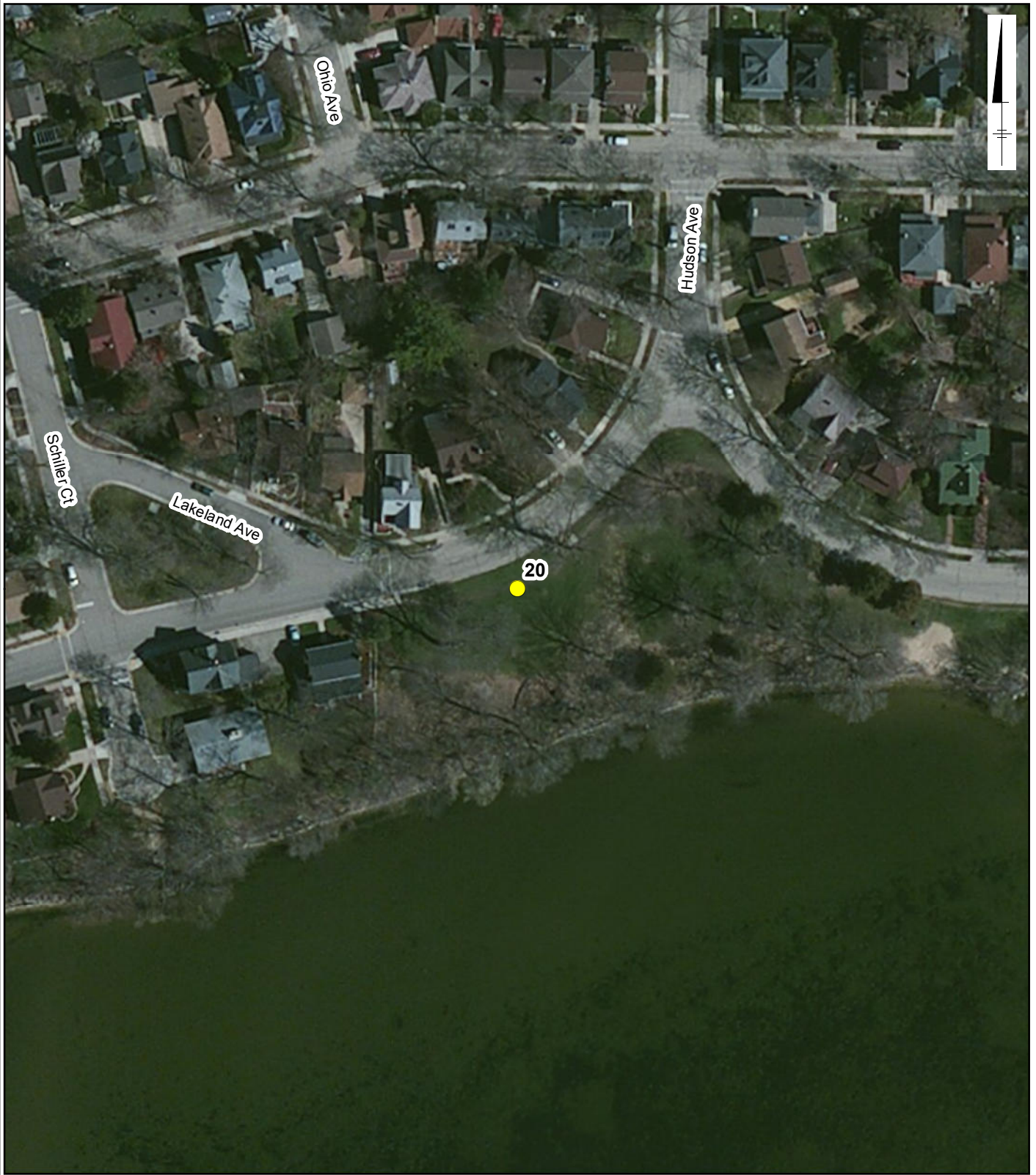
SERVICE LAYER CREDITS: SOURCE: ESRI, DIGITALGLOBE,
 GEOEYE, I-CUBED, USDA, USGS, AEX, GETMAPPING, AEROGRIID,
 IGN, IGP, SWISSTOPO, AND THE GIS USER COMMUNITY

MADISON-KIPP CORPORATION
 201 WAUBESA STREET
 MADISON, WISCONSIN

**PROPOSED PAH SOIL
 SAMPLE LOCATIONS**



**FIGURE
 14**

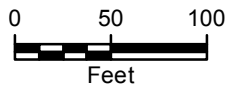


CITY: MPLS DIV/GROUP: IM/DV DB: MG LD: CK MADISON-KIPP
 G:\GIS\Projects\MadisonKipp\ArcMap\2013-11\ProposedPAH_Details_20131114.mxd

LEGEND



PROPOSED POLYNUCLEAR AROMATIC
 HYDROCARBON (PAH) SAMPLE LOCATIONS



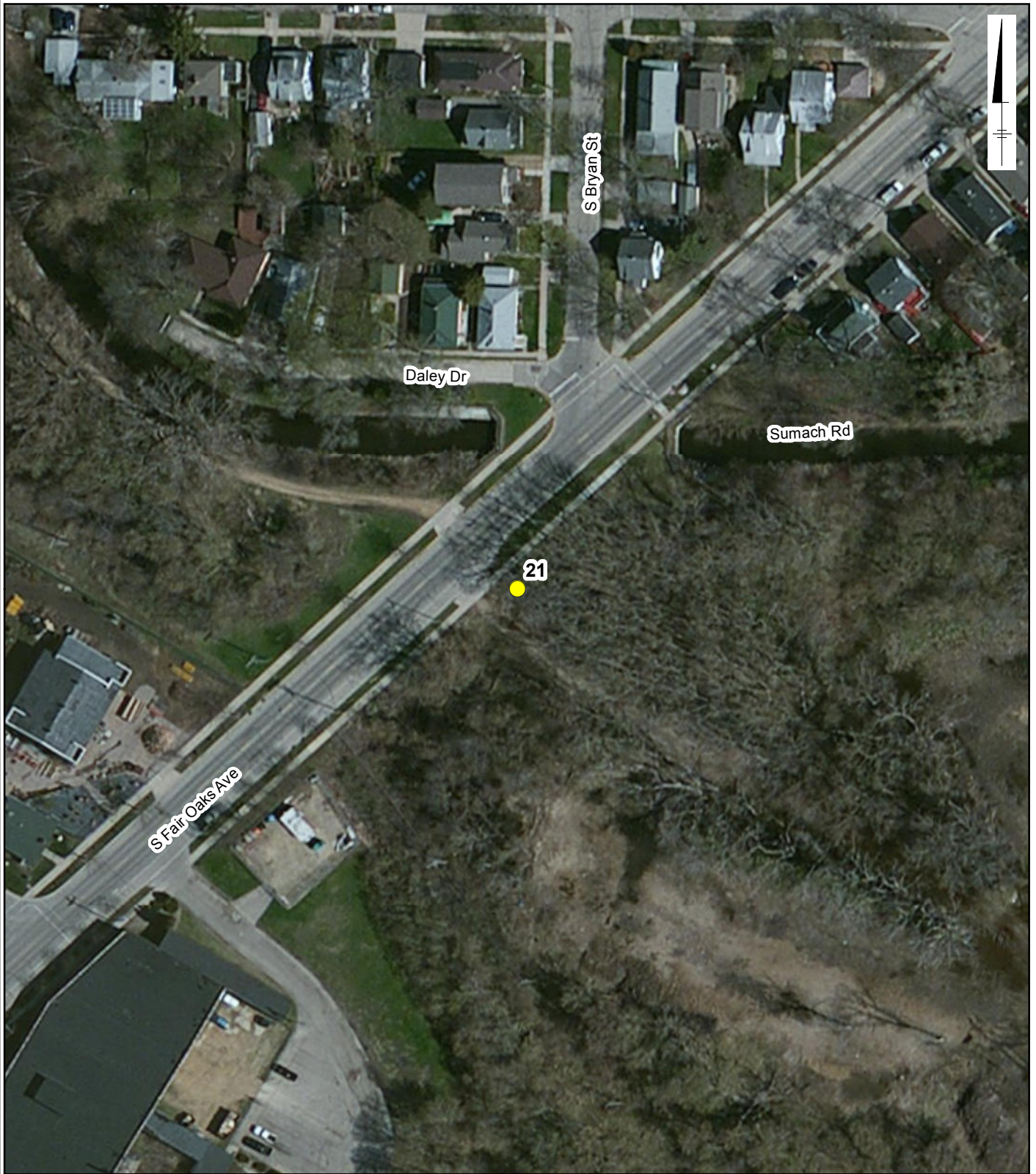
SERVICE LAYER CREDITS: SOURCE: ESRI, DIGITALGLOBE,
 GEOEYE, I-CUBED, USDA, USGS, AEX, GETMAPPING, AEROGRIID,
 IGN, IGP, SWISSTOPO, AND THE GIS USER COMMUNITY

MADISON-KIPP CORPORATION
 201 WAUBESA STREET
 MADISON, WISCONSIN

**PROPOSED PAH SOIL
 SAMPLE LOCATIONS**



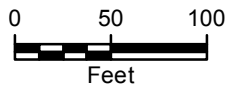
**FIGURE
 15**



CITY: MPLS DIV/GROUP: IM/DV DB: MG LD: CK MADISON-KIPP
 G:\GIS\Projects\MadisonKipp\ArcMap\2013-11\ProposedPAH_Details_20131114.mxd

LEGEND

- PROPOSED POLYNUCLEAR AROMATIC HYDROCARBON (PAH) SAMPLE LOCATIONS



SERVICE LAYER CREDITS: SOURCE: ESRI, DIGITALGLOBE, GEOEYE, I-CUBED, USDA, USGS, AEX, GETMAPPING, AEROGRIID, IGN, IGP, SWISSTOPO, AND THE GIS USER COMMUNITY

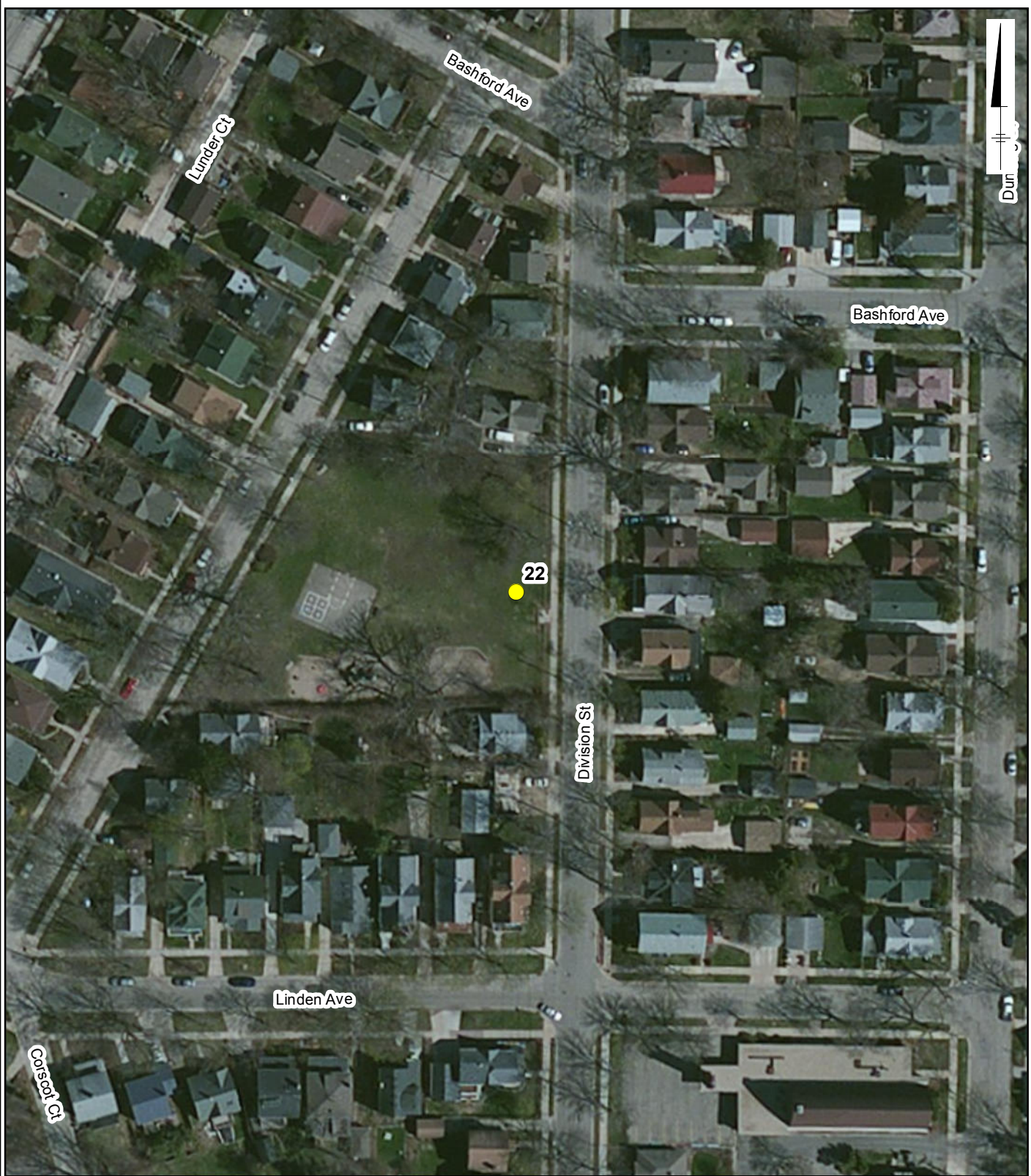
MADISON-KIPP CORPORATION
 201 WAUBESA STREET
 MADISON, WISCONSIN

PROPOSED PAH SOIL SAMPLE LOCATIONS



FIGURE 16

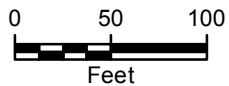
CITY: MPLS DIV/GROUP: IM/DV DB: MG LD: CK MADISON-KIPP
G:\GIS\Projects\MadisonKipp\ArcMap\2013-11\ProposedPAH_Details_20131114.mxd



LEGEND



PROPOSED POLYNUCLEAR AROMATIC
HYDROCARBON (PAH) SAMPLE LOCATIONS



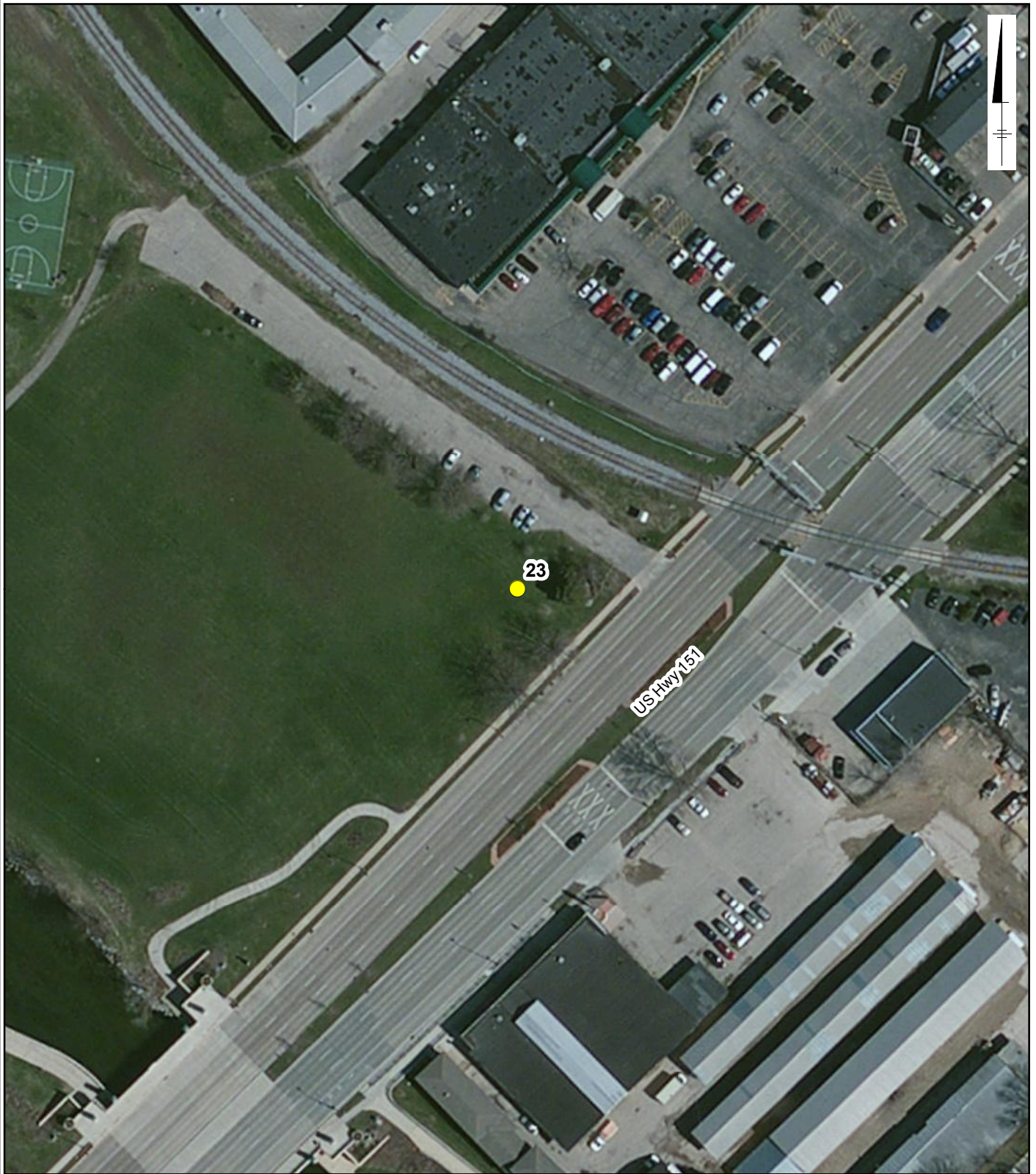
SERVICE LAYER CREDITS: SOURCE: ESRI, DIGITALGLOBE,
GEOEYE, I-CUBED, USDA, USGS, AEX, GETMAPPING, AERGRID,
IGN, IGP, SWISSTOPO, AND THE GIS USER COMMUNITY

MADISON-KIPP CORPORATION
201 WAUBESA STREET
MADISON, WISCONSIN

**PROPOSED PAH SOIL
SAMPLE LOCATIONS**



**FIGURE
17**

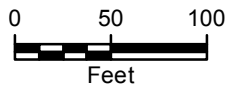


CITY: MPLS DIV/GROUP: IM/DV DB: MG LD: CK MADISON-KIPP
 G:\GIS\Projects\MadisonKipp\ArcMap\2013-11\ProposedPAH_Details_20131114.mxd

LEGEND



PROPOSED POLYNUCLEAR AROMATIC
 HYDROCARBON (PAH) SAMPLE LOCATIONS



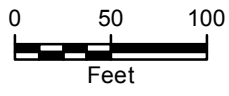
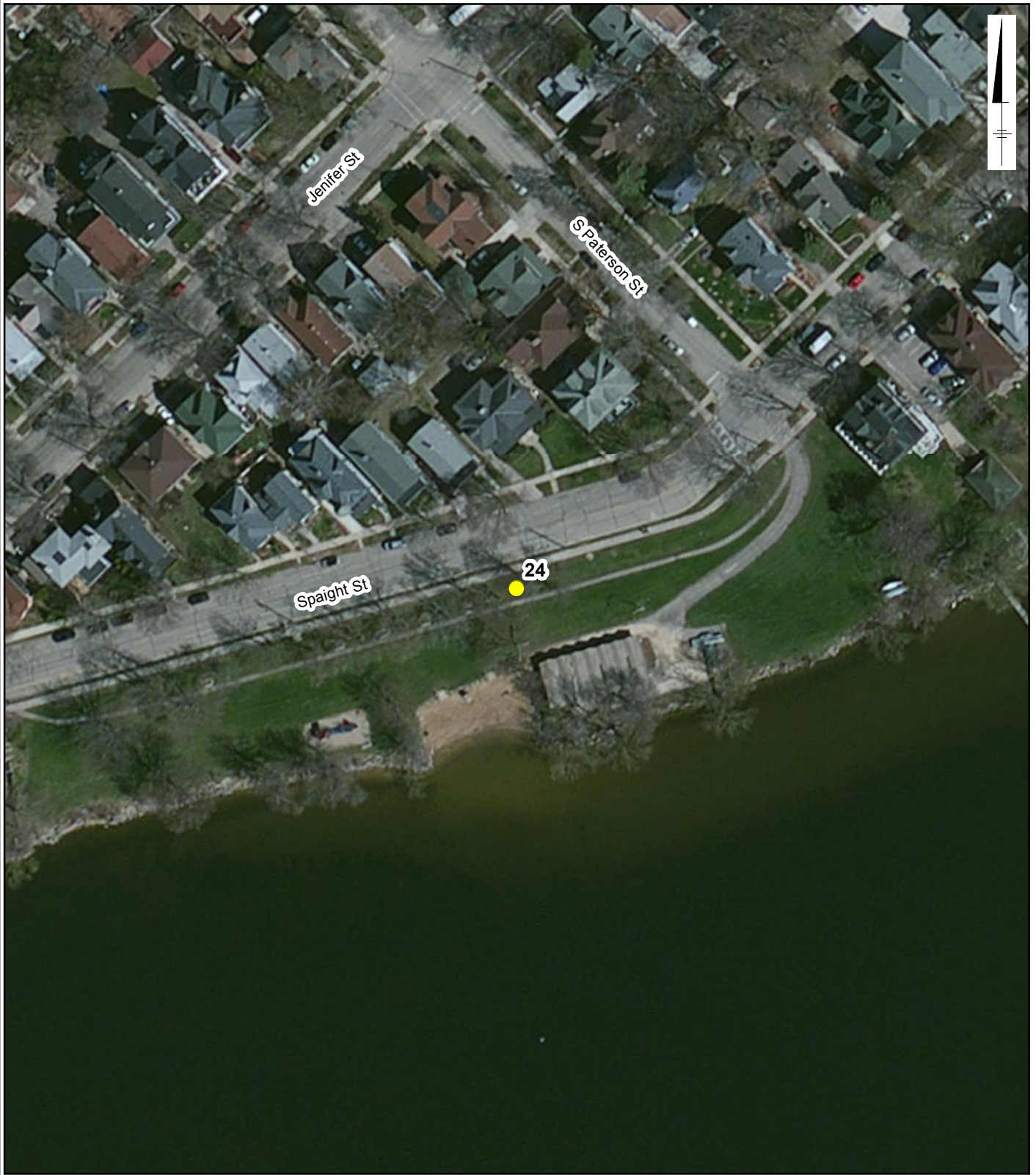
SERVICE LAYER CREDITS: SOURCE: ESRI, DIGITALGLOBE,
 GEOEYE, I-CUBED, USDA, USGS, AEX, GETMAPPING, AEROGRIID,
 IGN, IGP, SWISSTOPO, AND THE GIS USER COMMUNITY

MADISON-KIPP CORPORATION
 201 WAUBESA STREET
 MADISON, WISCONSIN

**PROPOSED PAH SOIL
 SAMPLE LOCATIONS**



**FIGURE
 18**



LEGEND

- PROPOSED POLYNUCLEAR AROMATIC HYDROCARBON (PAH) SAMPLE LOCATIONS

SERVICE LAYER CREDITS: SOURCE: ESRI, DIGITALGLOBE, GEOEYE, I-CUBED, USDA, USGS, AEX, GETMAPPING, AEROGRID, IGN, IGP, SWISSTOPO, AND THE GIS USER COMMUNITY

MADISON-KIPP CORPORATION
 201 WAUBESA STREET
 MADISON, WISCONSIN

PROPOSED PAH SOIL SAMPLE LOCATIONS



FIGURE 19

CITY: MPLS DIV/GROUP: IM/DV DB: MG LD: CK MADISON-KIPP G:\GIS\Projects\MadisonKipp\ArcMap2013-11\ProposedPAH_Details_20131114.mxd