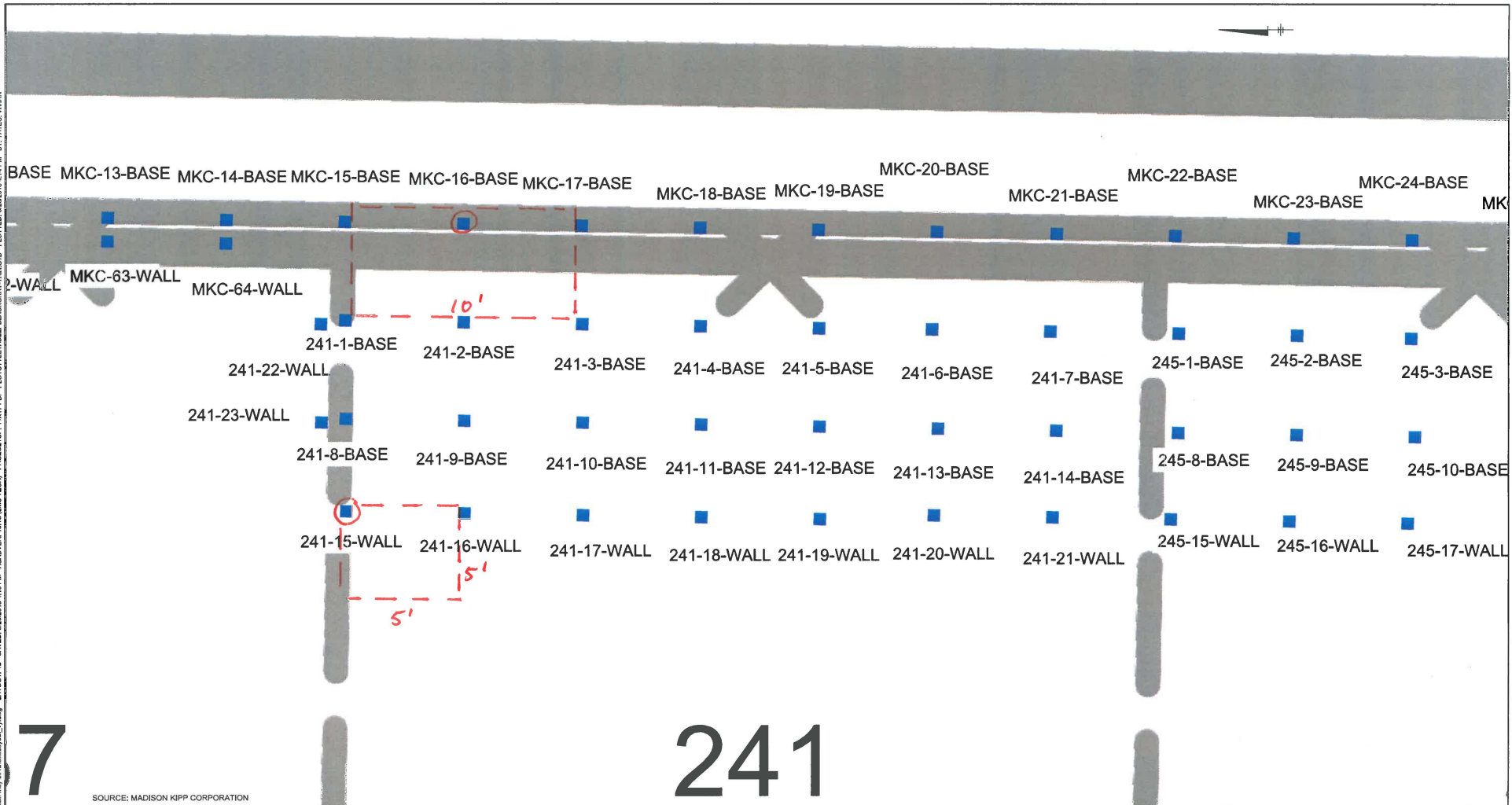


CITY: MADISON; COUNTY: DANE; PROJECT: 201 WAUBESA ST; SHEET: 1B; DATE: 5/20/13; TIME: 4:10 PM; USER: jay.yates; PROJECT: 201 WAUBESA ST; SHEET: 1B; DATE: 5/20/13; TIME: 4:10 PM; USER: jay.yates; PROJECT: 201 WAUBESA ST; SHEET: 1B; DATE: 5/20/13; TIME: 4:10 PM; USER: jay.yates



7

241

SOURCE: MADISON KIPP CORPORATION

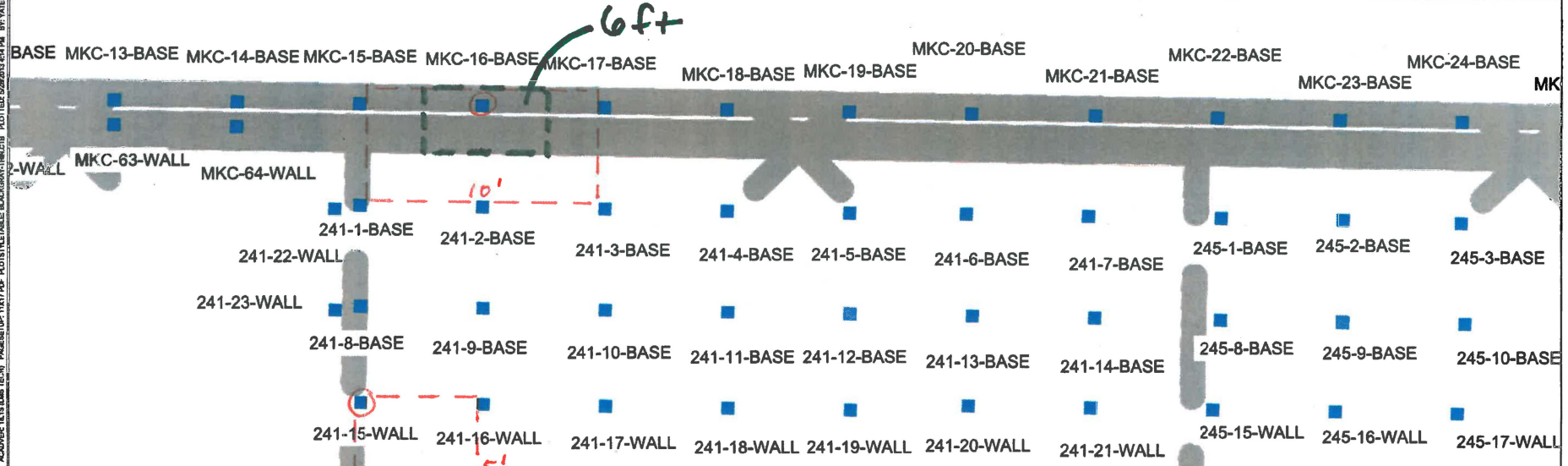
DRAFT
Privileged and Confidential

MADISON KIPP CORPORATION
201 WAUBESA STREET
MADISON, WISCONSIN

241 WAUBESA ST.



FIGURE
1B



CITY OF MADISON 5/16/2013 10:00 AM PROJECT: 13177 PDF: PLOTTABLES BACKSPAN/CONCRETE WALLS 1/23/2013 10:00 AM
 STATE OF WISCONSIN 5/16/2013 10:00 AM PROJECT: 13177 PDF: PLOTTABLES BACKSPAN/CONCRETE WALLS 1/23/2013 10:00 AM
 COUNTY OF MADISON 5/16/2013 10:00 AM PROJECT: 13177 PDF: PLOTTABLES BACKSPAN/CONCRETE WALLS 1/23/2013 10:00 AM
 TOWN OF MADISON 5/16/2013 10:00 AM PROJECT: 13177 PDF: PLOTTABLES BACKSPAN/CONCRETE WALLS 1/23/2013 10:00 AM
 WARD 11B 5/16/2013 10:00 AM PROJECT: 13177 PDF: PLOTTABLES BACKSPAN/CONCRETE WALLS 1/23/2013 10:00 AM
 SHEET: 10317

7

241

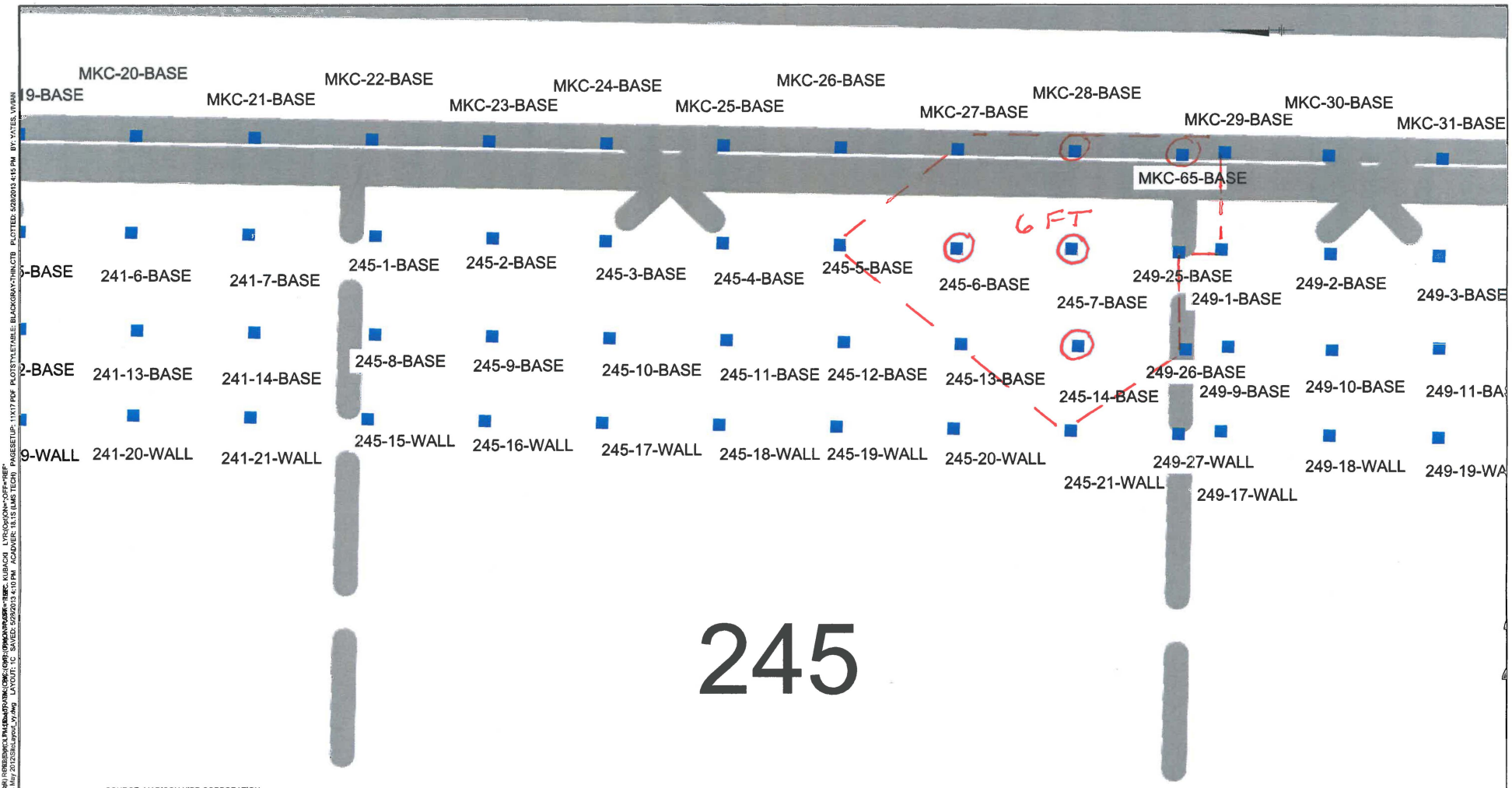
SOURCE: MADISON KIPP CORPORATION
 DRAFT
 Privileged and Confidential

MADISON KIPP CORPORATION
 201 WAUBESA STREET
 MADISON, WISCONSIN

241 WAUBESA ST.



FIGURE
1B



CITY OF MADISON: C:\GIS\PROJECTS\245 WAUBESA ST\245 WAUBESA ST.DWG (OR: OPINION) - T.M.C. KUBACKI, LVS (OPINION) - OFF - REF.
 G:\projects\245 waubesa st\245 waubesa st.dwg (OR: OPINION) - T.M.C. KUBACKI, LVS (OPINION) - OFF - REF.
 DATE: 05/20/2013 4:10 PM ACADWPER: 18.15 (LMS TECH) PAGES: 10 LAYOUT: 1C
 PLOT SETUP: 1:1X17 PLOT STYLE: VTABLE: BLACKBGRAND.DWT PLOTTED: 05/20/2013 4:15 PM BY: YATES, LYNN

SOURCE: MADISON KIPP CORPORATION

DRAFT
Privileged and Confidential

MADISON KIPP CORPORATION 201 WAUBESA STREET MADISON, WISCONSIN	
245 WAUBESA ST.	
	FIGURE 1C

PROJECT NAME: 249 WAUBESA ST. PROJECT NO: 181315011
DATE: 11/13/2018
SCALE: AS SHOWN
SHEET: 1 OF 1
DRAWN BY: M371
CHECKED BY:
PROJECT ENGINEER:
CITY OF MADISON, WISCONSIN, ENGINEER OF RECORD: M371/181315011/001/20181113
THIS DOCUMENT IS UNCLASSIFIED EXCEPT WHERE SHOWN OTHERWISE. THIS DOCUMENT IS UNCLASSIFIED EXCEPT WHERE SHOWN OTHERWISE.
CITY OF MADISON, WISCONSIN, ENGINEER OF RECORD: M371/181315011/001/20181113
THIS DOCUMENT IS UNCLASSIFIED EXCEPT WHERE SHOWN OTHERWISE. THIS DOCUMENT IS UNCLASSIFIED EXCEPT WHERE SHOWN OTHERWISE.
CITY OF MADISON, WISCONSIN, ENGINEER OF RECORD: M371/181315011/001/20181113
THIS DOCUMENT IS UNCLASSIFIED EXCEPT WHERE SHOWN OTHERWISE. THIS DOCUMENT IS UNCLASSIFIED EXCEPT WHERE SHOWN OTHERWISE.



SOURCE: MADISON KIPP CORPORATION

DRAFT
Privileged and Confidential

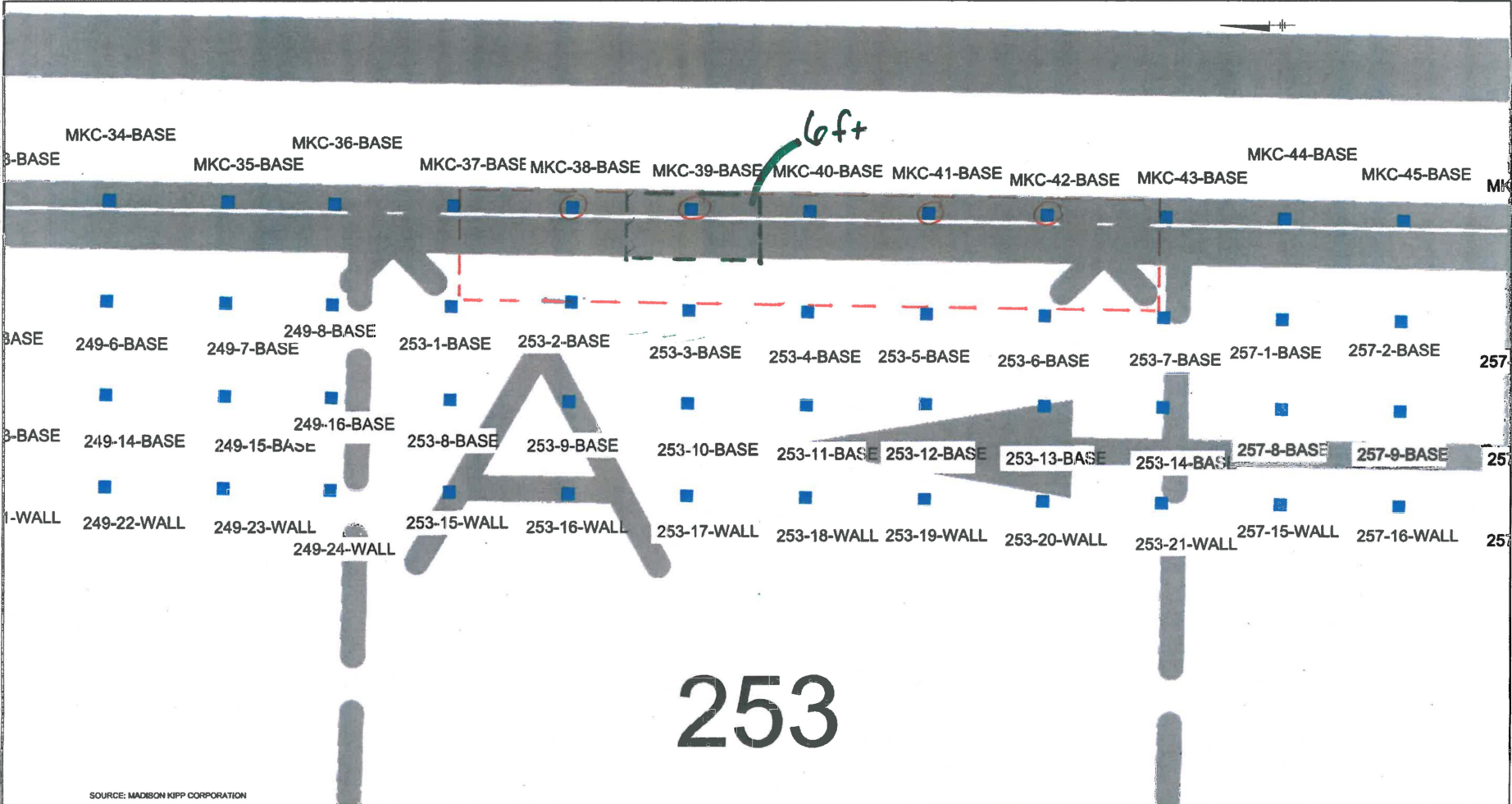
MADISON KIPP CORPORATION
201 WAUBESA STREET
MADISON, WISCONSIN

249 WAUBESA ST.




FIGURE
1D

STATE OF WISCONSIN DEPARTMENT OF TRANSPORTATION DIVISION OF HIGHWAYS PROJECT: 1437 PFC PLOT/LETTABLE BLACK/GRAY/WHITE PLOTTED: 5/20/2014 10:44 AM BY: JAVIER WISMAR

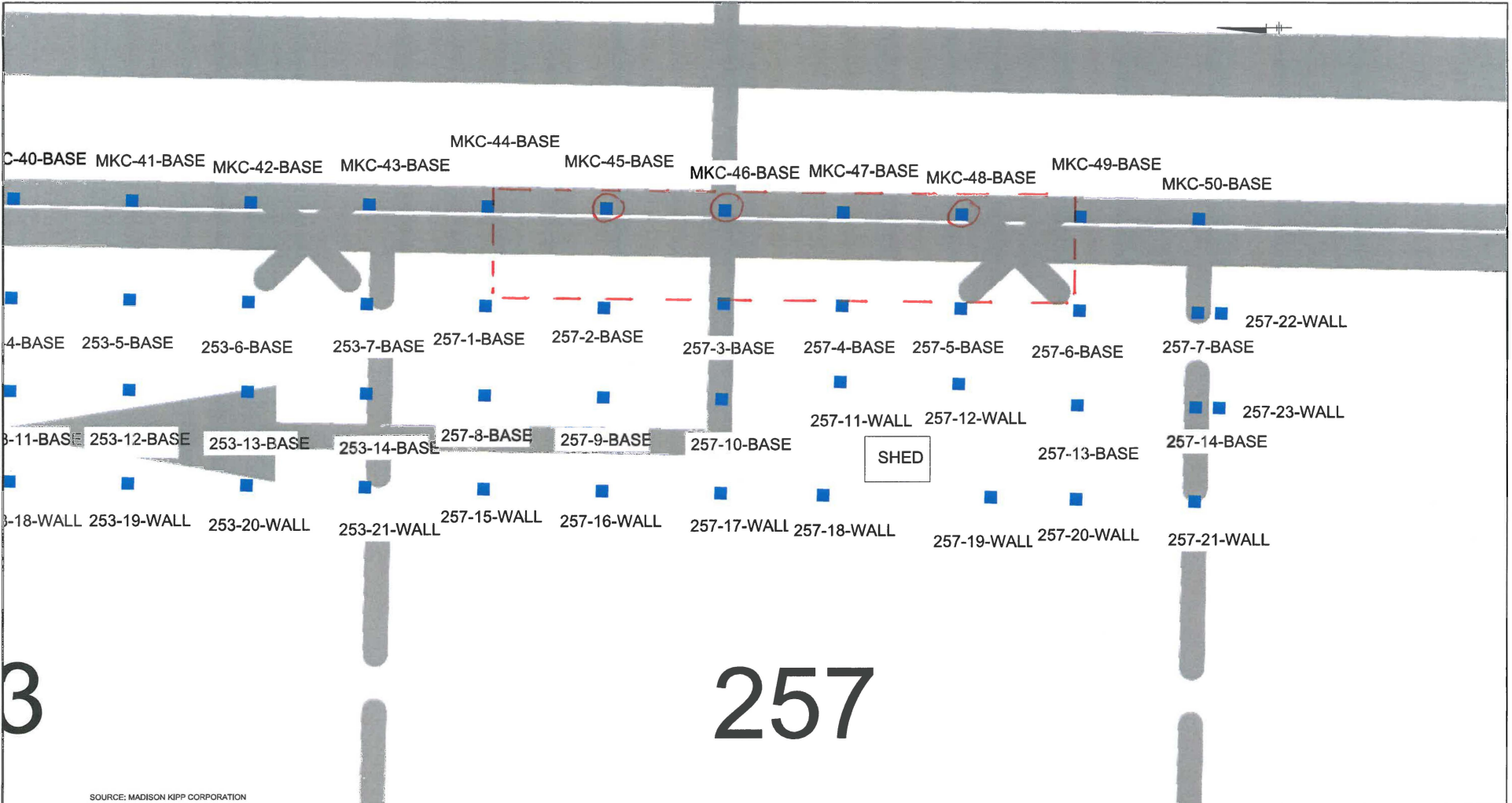


SOURCE: MADISON KIPP CORPORATION

DRAFT
Privileged and Confidential

MADISON KIPP CORPORATION 201 WAUBESA STREET MADISON, WISCONSIN	
253 WAUBESA ST.	
	FIGURE 1E

CITY OF MADISON GIS SERVICES | 1525 N. KANSAS ST. | MADISON, WI 53706 | 608.261.3000 | WWW.MADISON.GOV | PROJECT: 257 WAUBESA ST. | DRAWING: 257-10-000 | DATE: 05/20/2013 4:10 PM | USER: JACOB.DER | 18.18 (LMS TECH) | PAGESETUP: 11X17 PDF | PLOTSTYLE: LEAGLE.BLACKGRAY.PLOTCTB | PLOTTED: 5/20/2013 4:10 PM | BY: YATES, WMAN



3

257

SOURCE: MADISON KIPP CORPORATION

DRAFT
Privileged and Confidential

MADISON KIPP CORPORATION
201 WAUBESA STREET
MADISON, WISCONSIN

257 WAUBESA ST.



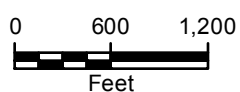
FIGURE
1F



LAKE MONONA

LEGEND

- PROPOSED POLYNUCLEAR AROMATIC HYDROCARBON (PAH) SAMPLE LOCATIONS
- SITE BOUNDARY



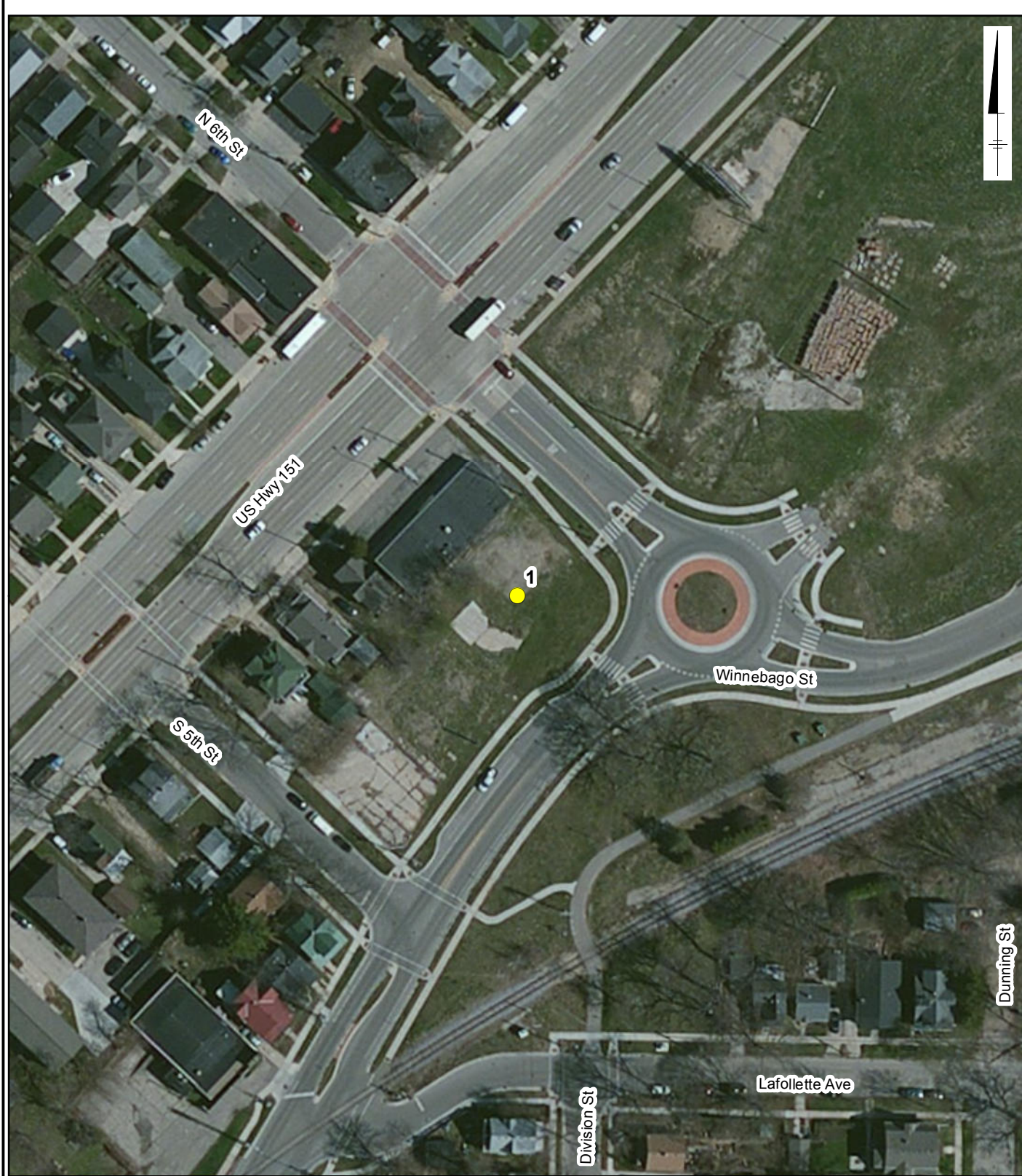
SERVICE LAYER CREDITS: SOURCE: ESRI, DIGITALGLOBE, GEOEYE, I-CUBED, USDA, USGS, AEX, GETMAPPING, AEROGRIID, IGN, IGP, SWISSTOPO, AND THE GIS USER COMMUNITY

MADISON-KIPP CORPORATION
201 WAUBESA STREET
MADISON, WISCONSIN

**PROPOSED PAH SOIL
SAMPLE LOCATIONS**



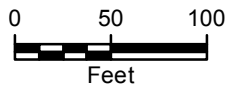
FIGURE
1



CITY: MPLS DIV/GROUP: IM/DV DB: MG LD: CK MADISON-KIPP
 G:\GIS\Projects\MadisonKipp\ArcMap2013-11\ProposedPAH_Details_20131114.mxd

LEGEND

- PROPOSED POLYNUCLEAR AROMATIC HYDROCARBON (PAH) SAMPLE LOCATIONS



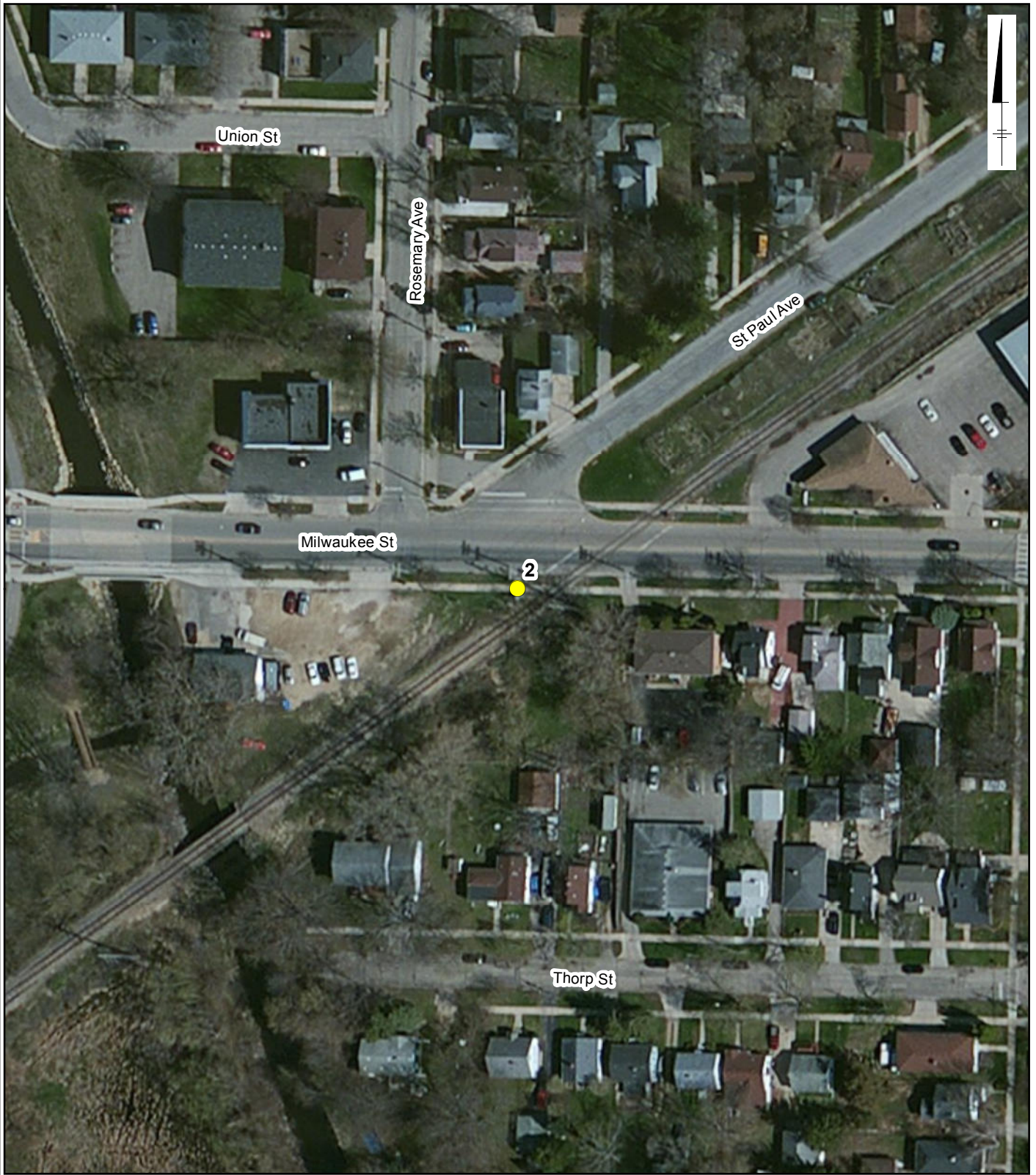
SERVICE LAYER CREDITS: SOURCE: ESRI, DIGITALGLOBE, GEOEYE, I-CUBED, USDA, USGS, AEX, GETMAPPING, AERGRID, IGN, IGP, SWISSTOPO, AND THE GIS USER COMMUNITY

MADISON-KIPP CORPORATION
 201 WAUBESA STREET
 MADISON, WISCONSIN

PROPOSED PAH SOIL SAMPLE LOCATIONS



FIGURE
2

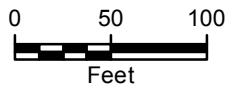


CITY: MPLS DIV/GROUP: IM/DV DB: MG LD: CK MADISON-KIPP
G:\GIS\Projects\MadisonKipp\ArcMap\2013-11\ProposedPAH_Details_20131114.mxd

LEGEND



PROPOSED POLYNUCLEAR AROMATIC
HYDROCARBON (PAH) SAMPLE LOCATIONS



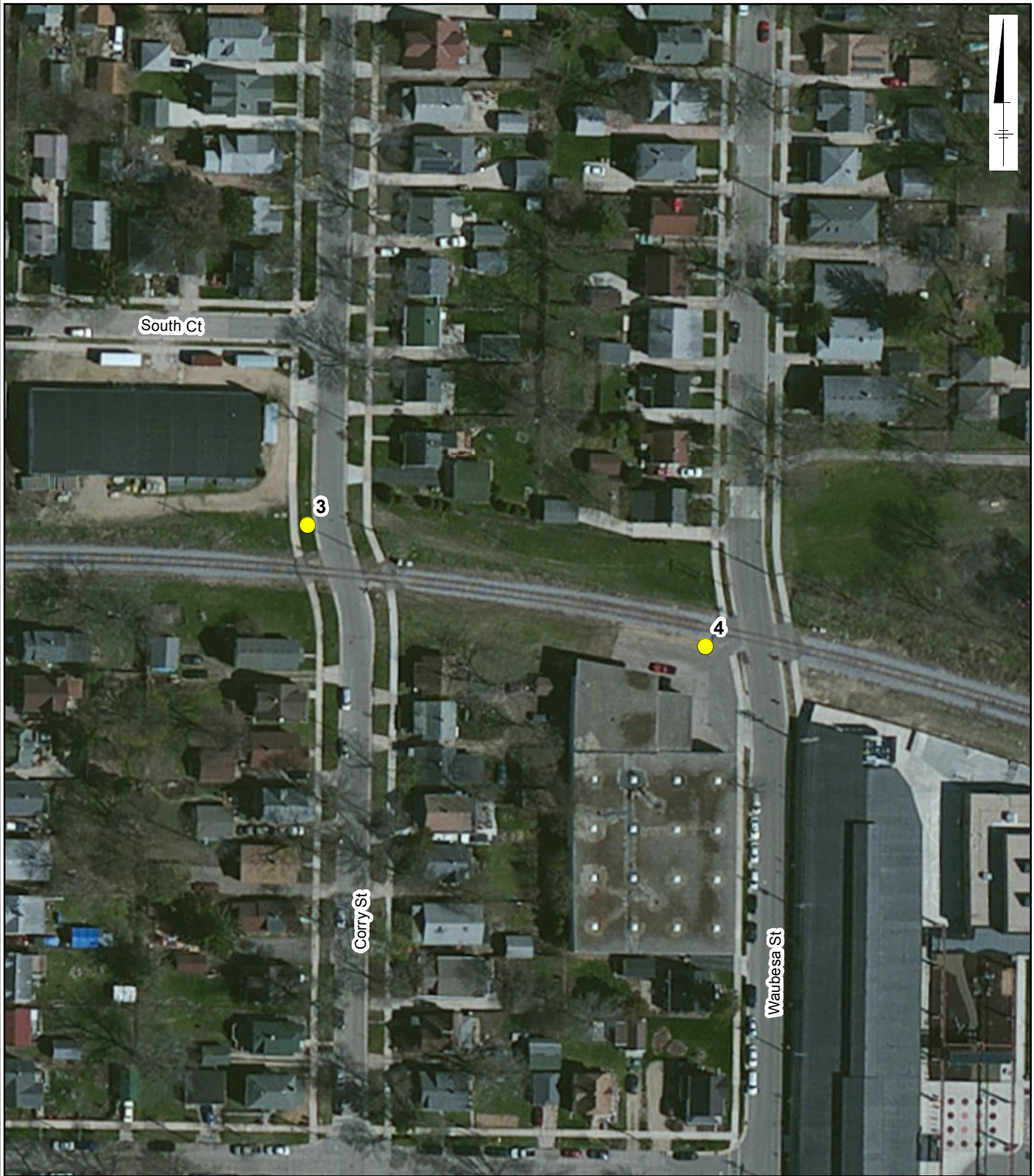
SERVICE LAYER CREDITS: SOURCE: ESRI, DIGITALGLOBE,
GEOEYE, I-CUBED, USDA, USGS, AEX, GETMAPPING, AERGRID,
IGN, IGP, SWISSTOPO, AND THE GIS USER COMMUNITY

MADISON-KIPP CORPORATION
201 WAUBESA STREET
MADISON, WISCONSIN

**PROPOSED PAH SOIL
SAMPLE LOCATIONS**



**FIGURE
3**

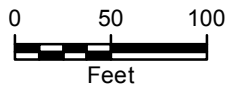


CITY: MPLS DIV/GROUP: IM/DV DB: MG LD: CK MADISON-KIPP
 G:\GIS\Projects\MadisonKipp\ArcMap\2013-11\ProposedPAH_Details_20131114.mxd

LEGEND



PROPOSED POLYNUCLEAR AROMATIC
 HYDROCARBON (PAH) SAMPLE LOCATIONS



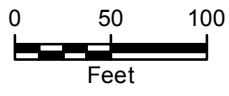
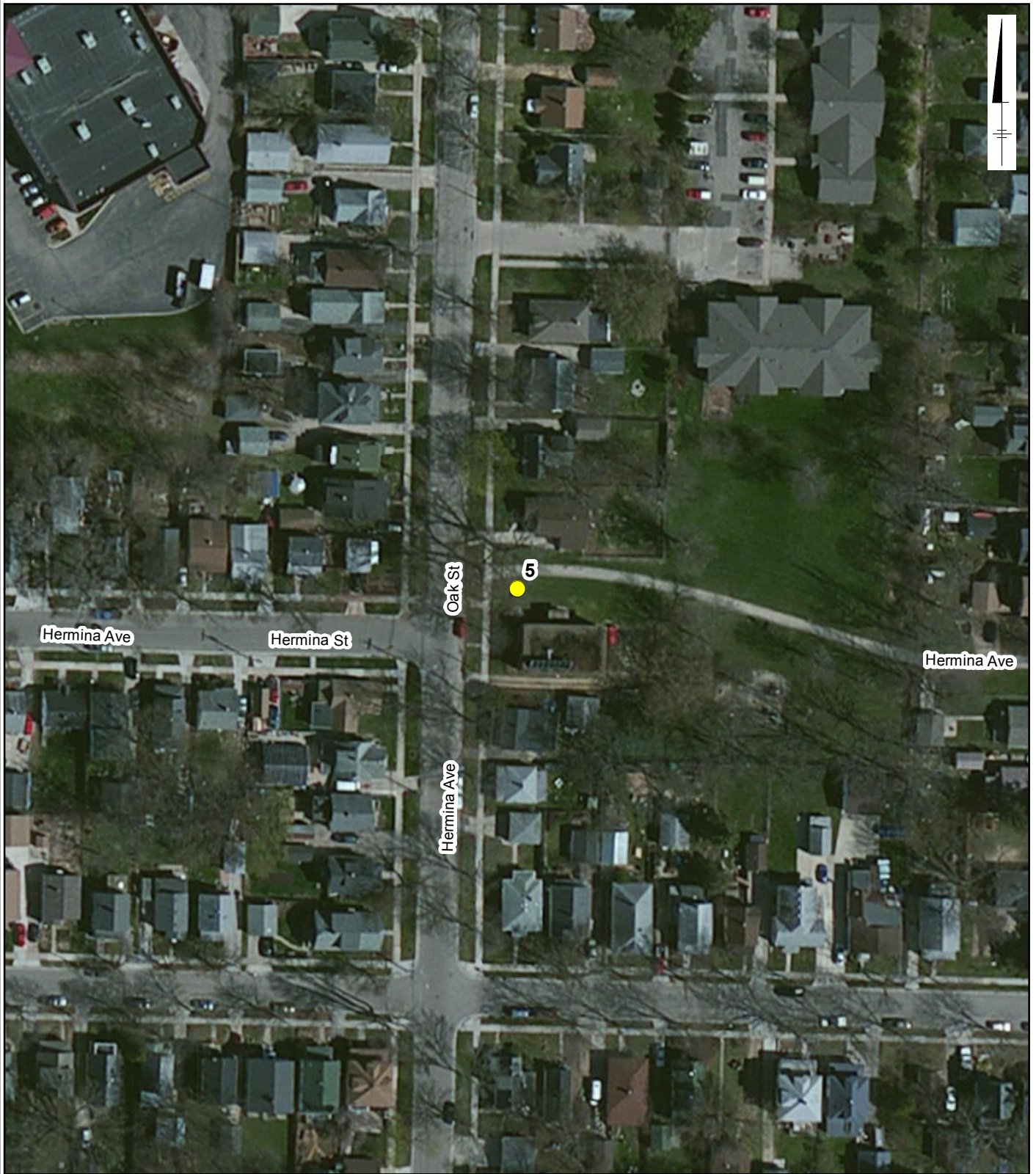
SERVICE LAYER CREDITS: SOURCE: ESRI, DIGITALGLOBE,
 GEOEYE, I-CUBED, USDA, USGS, AEX, GETMAPPING, AERGRID,
 IGN, IGP, SWISSTOPO, AND THE GIS USER COMMUNITY

MADISON-KIPP CORPORATION
 201 WAUBESA STREET
 MADISON, WISCONSIN

**PROPOSED PAH SOIL
 SAMPLE LOCATIONS**



**FIGURE
 4**



LEGEND

- PROPOSED POLYNUCLEAR AROMATIC HYDROCARBON (PAH) SAMPLE LOCATIONS

SERVICE LAYER CREDITS: SOURCE: ESRI, DIGITALGLOBE, GEOEYE, I-CUBED, USDA, USGS, AEX, GETMAPPING, AERGRID, IGN, IGP, SWISSTOPO, AND THE GIS USER COMMUNITY

MADISON-KIPP CORPORATION
 201 WAUBESA STREET
 MADISON, WISCONSIN

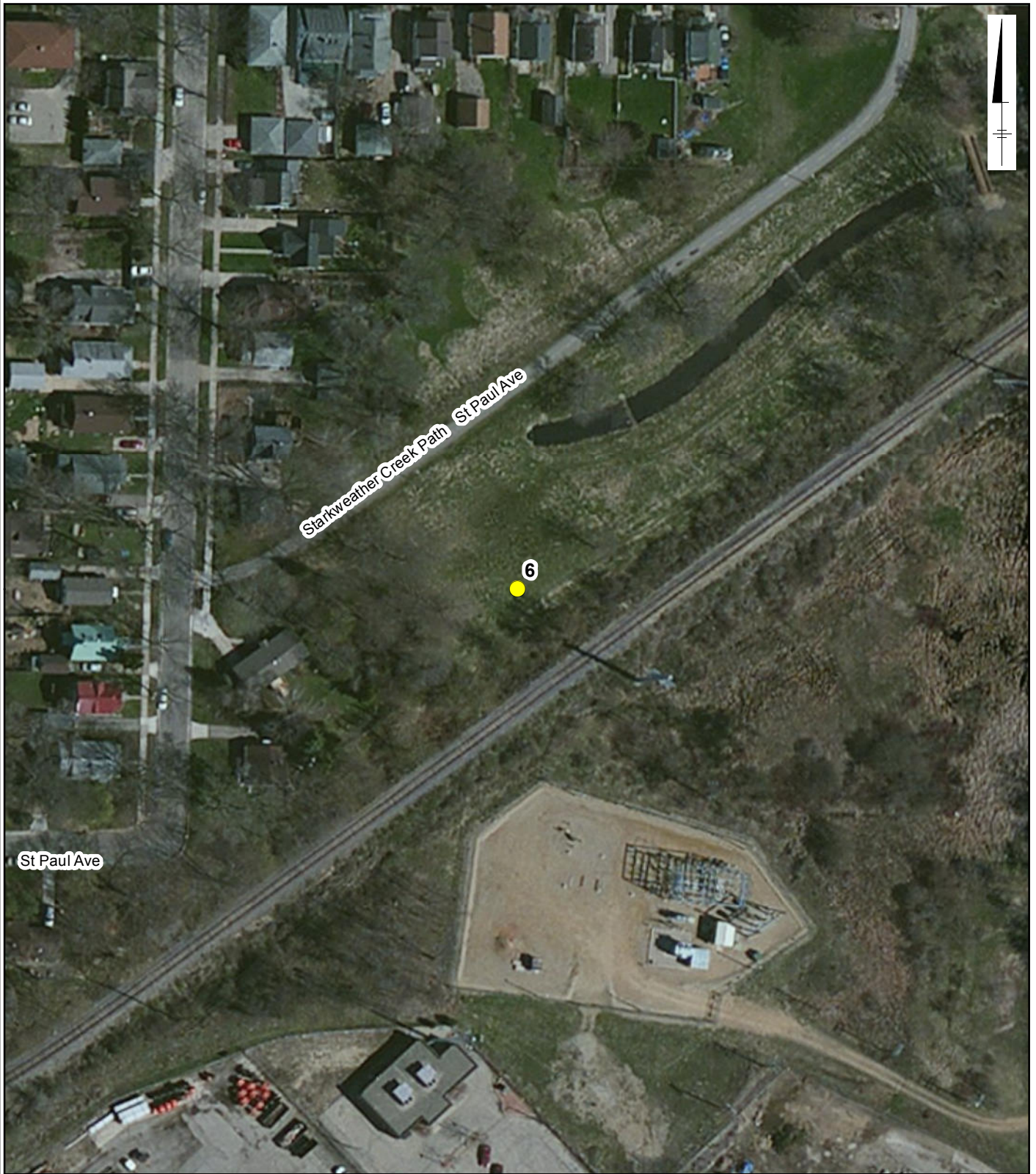
**PROPOSED PAH SOIL
 SAMPLE LOCATIONS**



**FIGURE
 5**

CITY: MPLS DIV/GROUP: IM/DV DB: MG LD: CK MADISON-KIPP
 G:\GIS\Projects\MadisonKipp\ArcMap\2013-11\ProposedPAH_Details_20131114.mxd

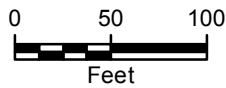
CITY: MPLS DIV/GROUP: IM/DV DB: MG LD: CK MADISON-KIPP
G:\GIS\Projects\MadisonKipp\ArcMap\2013-11\ProposedPAH_Details_20131114.mxd



LEGEND



PROPOSED POLYNUCLEAR AROMATIC
HYDROCARBON (PAH) SAMPLE LOCATIONS



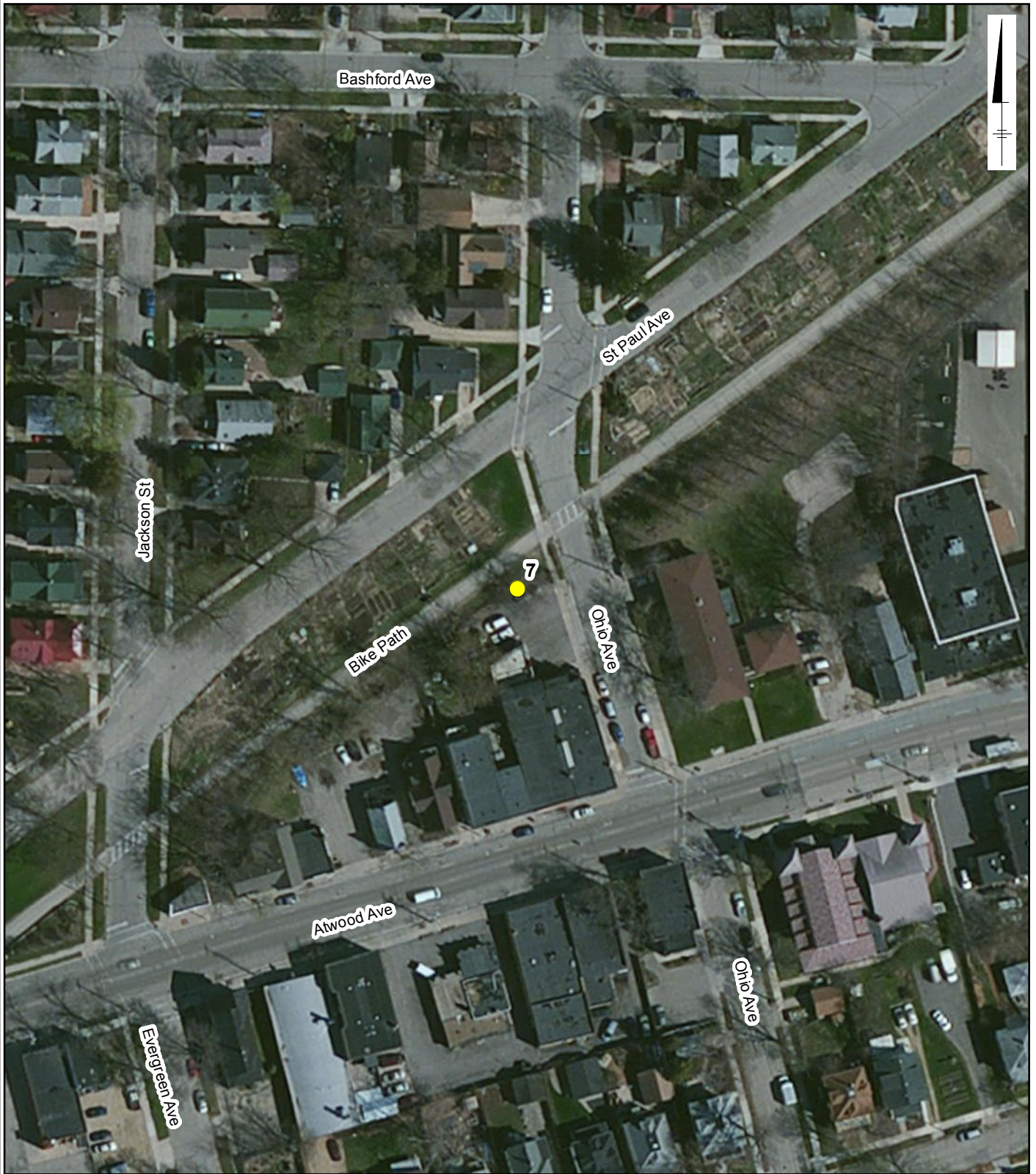
SERVICE LAYER CREDITS: SOURCE: ESRI, DIGITALGLOBE,
GEOEYE, I-CUBED, USDA, USGS, AEX, GETMAPPING, AERGRID,
IGN, IGP, SWISSTOPO, AND THE GIS USER COMMUNITY

MADISON-KIPP CORPORATION
201 WAUBESA STREET
MADISON, WISCONSIN

**PROPOSED PAH SOIL
SAMPLE LOCATIONS**



FIGURE
6

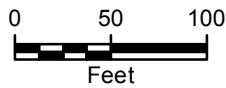


CITY: MPLS DIV/GROUP: IM/DV DB: MG LD: CK MADISON-KIPP
 G:\GIS\Projects\MadisonKipp\ArcMap\2013-11\ProposedPAH_Details_20131114.mxd

LEGEND



PROPOSED POLYNUCLEAR AROMATIC
 HYDROCARBON (PAH) SAMPLE LOCATIONS



SERVICE LAYER CREDITS: SOURCE: ESRI, DIGITALGLOBE,
 GEOEYE, I-CUBED, USDA, USGS, AEX, GETMAPPING, AERGRID,
 IGN, IGP, SWISSTOPO, AND THE GIS USER COMMUNITY

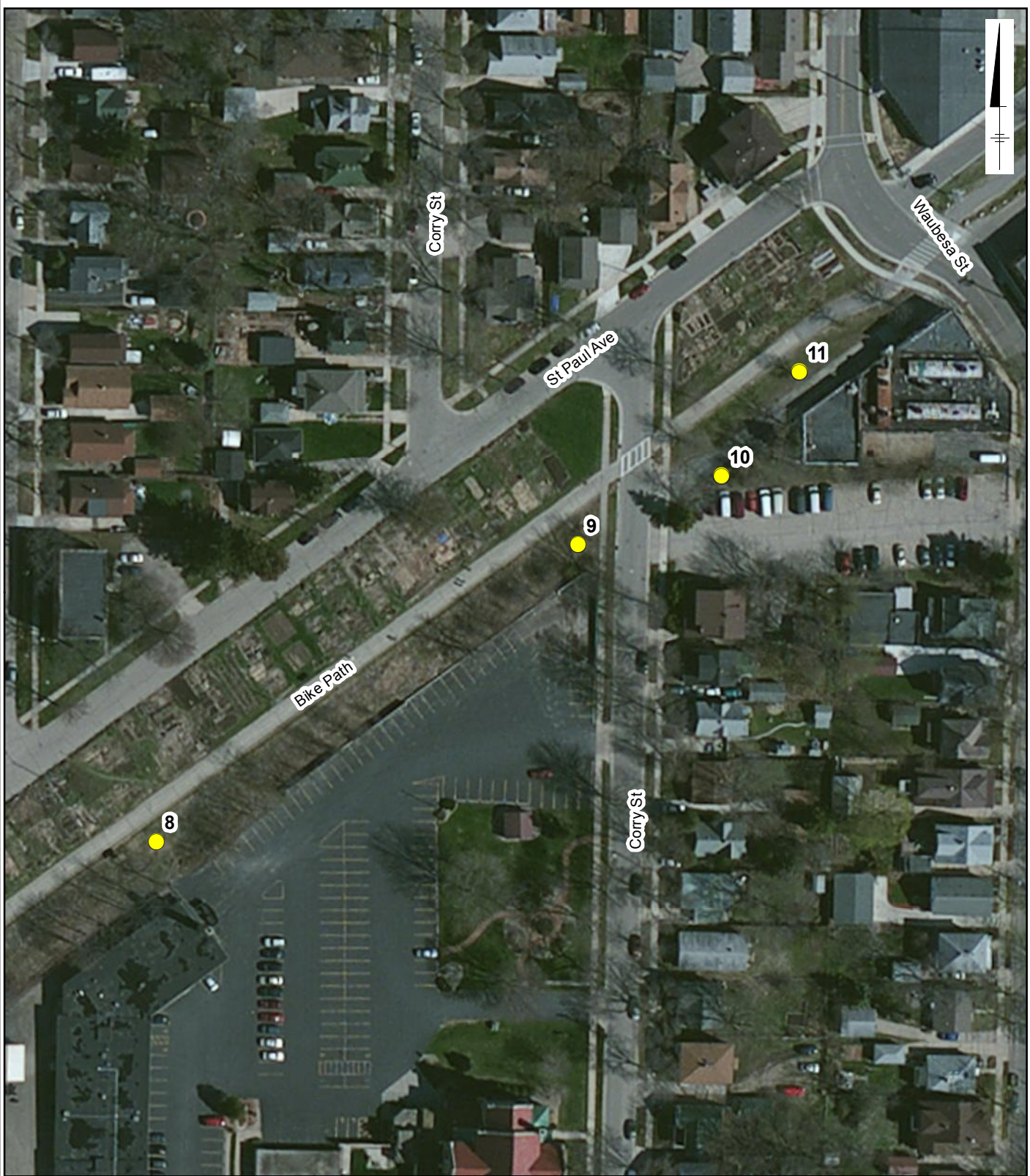
MADISON-KIPP CORPORATION
 201 WAUBESA STREET
 MADISON, WISCONSIN

**PROPOSED PAH SOIL
 SAMPLE LOCATIONS**



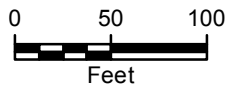
**FIGURE
 7**

CITY: MPLS DIV/GROUP: IM/DV DB: MG LD: CK MADISON-KIPP
G:\GIS\Projects\MadisonKipp\ArcMap\2013-11\ProposedPAH_Details_20131114.mxd



LEGEND

- PROPOSED POLYNUCLEAR AROMATIC HYDROCARBON (PAH) SAMPLE LOCATIONS



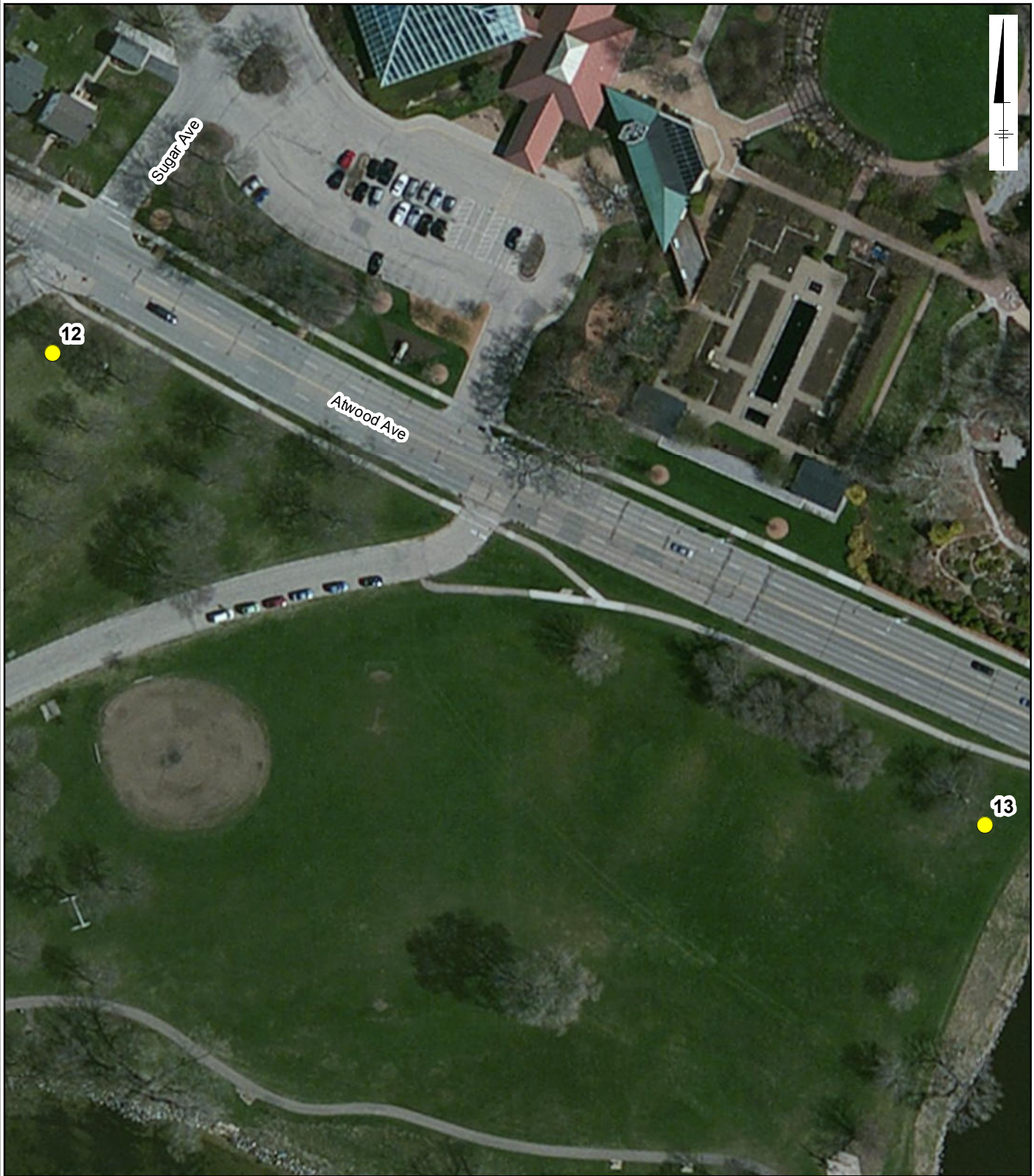
SERVICE LAYER CREDITS: SOURCE: ESRI, DIGITALGLOBE, GEOEYE, I-CUBED, USDA, USGS, AEX, GETMAPPING, AEROGRIID, IGN, IGP, SWISSTOPO, AND THE GIS USER COMMUNITY

MADISON-KIPP CORPORATION
201 WAUBESA STREET
MADISON, WISCONSIN

**PROPOSED PAH SOIL
SAMPLE LOCATIONS**



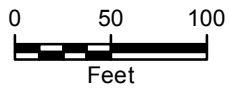
FIGURE
8



CITY: MPLS DIV/GROUP: IM/DV DB: MG LD: CK MADISON-KIPP
 G:\GIS\Projects\MadisonKipp\ArcMap\2013-11\ProposedPAH_Details_20131114.mxd

LEGEND

- PROPOSED POLYNUCLEAR AROMATIC HYDROCARBON (PAH) SAMPLE LOCATIONS



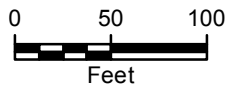
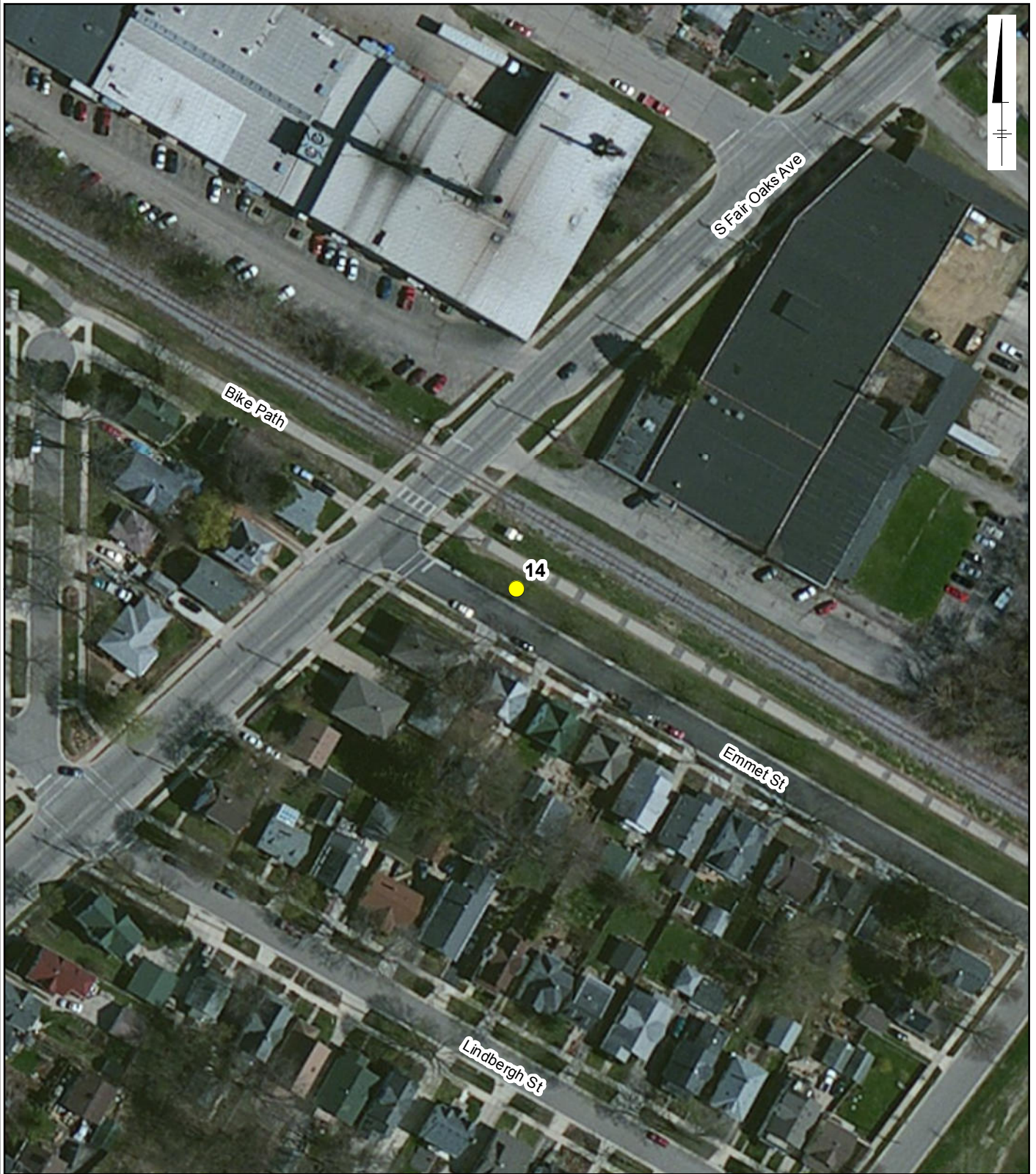
SERVICE LAYER CREDITS: SOURCE: ESRI, DIGITALGLOBE, GEOEYE, I-CUBED, USDA, USGS, AEX, GETMAPPING, AEROGRIID, IGN, IGP, SWISSTOPO, AND THE GIS USER COMMUNITY

MADISON-KIPP CORPORATION
 201 WAUBESA STREET
 MADISON, WISCONSIN

**PROPOSED PAH SOIL
 SAMPLE LOCATIONS**



**FIGURE
 9**



LEGEND

- PROPOSED POLYNUCLEAR AROMATIC HYDROCARBON (PAH) SAMPLE LOCATIONS

MADISON-KIPP CORPORATION
 201 WAUBESA STREET
 MADISON, WISCONSIN

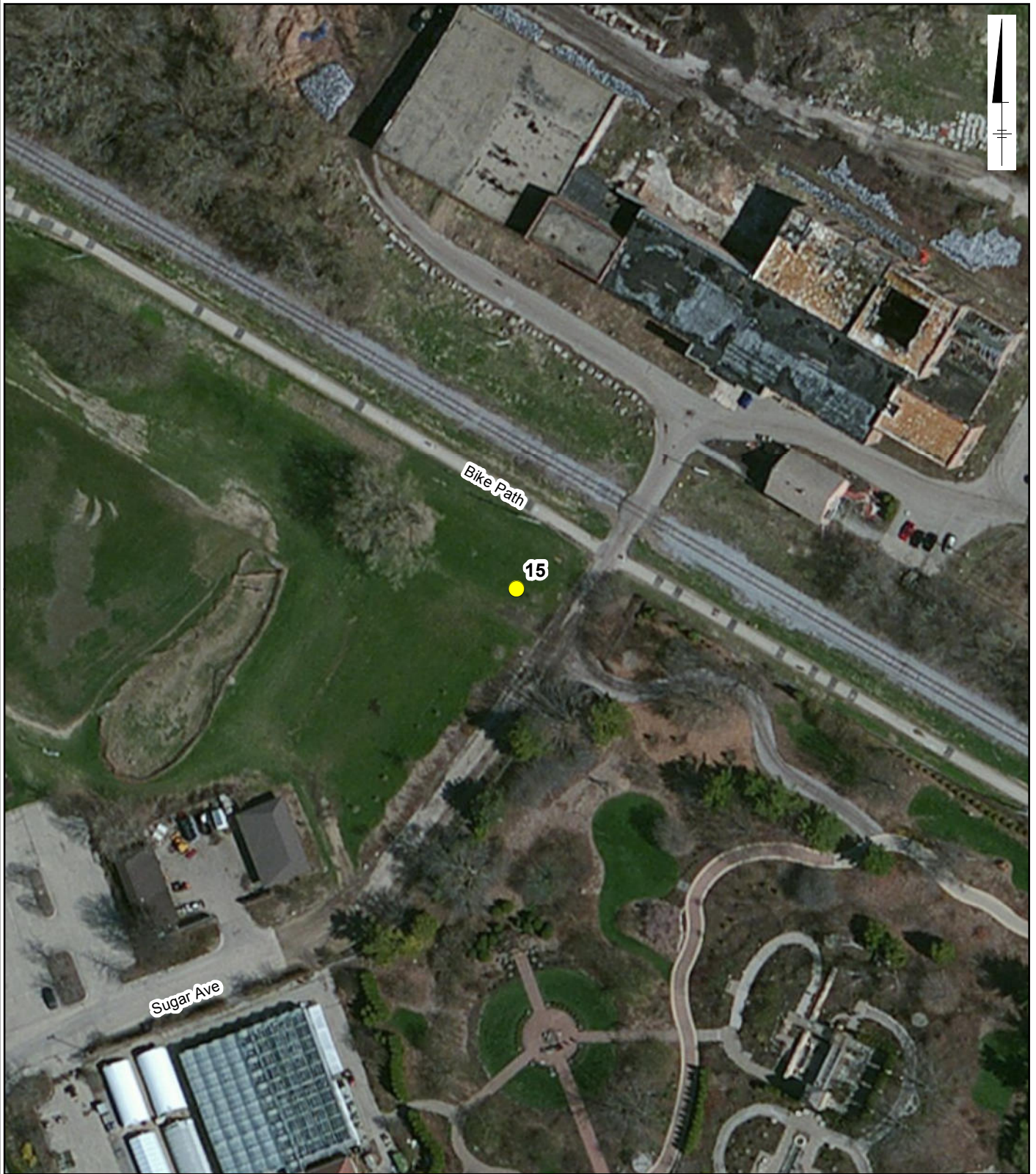
**PROPOSED PAH SOIL
 SAMPLE LOCATIONS**



**FIGURE
 10**

SERVICE LAYER CREDITS: SOURCE: ESRI, DIGITALGLOBE, GEOEYE, I-CUBED, USDA, USGS, AEX, GETMAPPING, AEROGRIID, IGN, IGP, SWISSTOPO, AND THE GIS USER COMMUNITY

CITY: MPLS DIV/GROUP: IM/DV DB: MG LD: CK MADISON-KIPP
 G:\GIS\Projects\MadisonKipp\ArcMap2013-11\ProposedPAH_Details_20131114.mxd

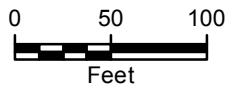


CITY: MPLS DIV/GROUP: IM/DV DB: MG LD: CK MADISON-KIPP
 G:\GIS\Projects\MadisonKipp\ArcMap\2013-11\ProposedPAH_Details_20131114.mxd

LEGEND



PROPOSED POLYNUCLEAR AROMATIC
 HYDROCARBON (PAH) SAMPLE LOCATIONS



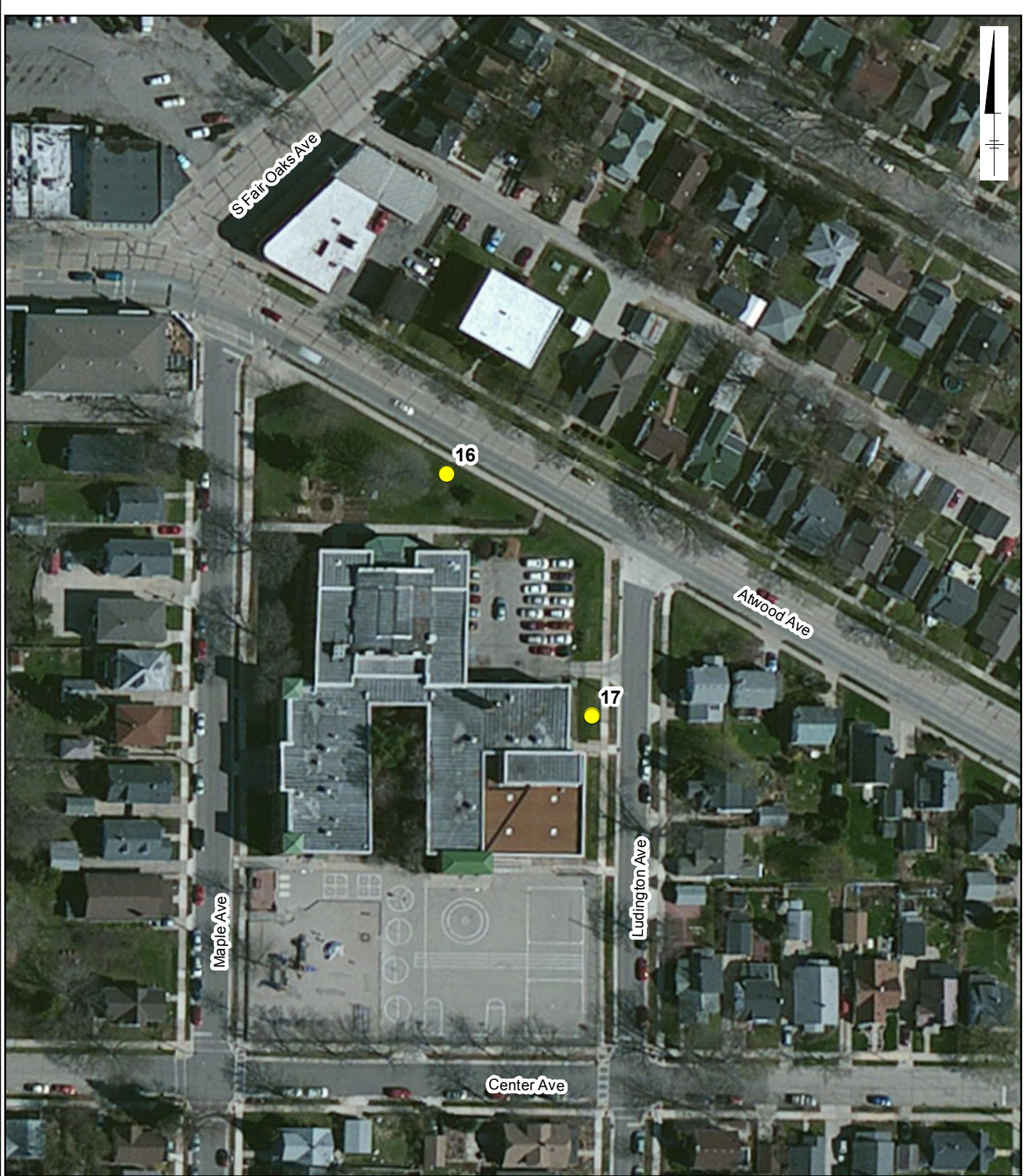
SERVICE LAYER CREDITS: SOURCE: ESRI, DIGITALGLOBE,
 GEOEYE, I-CUBED, USDA, USGS, AEX, GETMAPPING, AERGRID,
 IGN, IGP, SWISSTOPO, AND THE GIS USER COMMUNITY

MADISON-KIPP CORPORATION
 201 WAUBESA STREET
 MADISON, WISCONSIN

**PROPOSED PAH SOIL
 SAMPLE LOCATIONS**



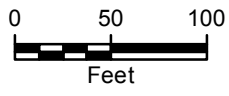
**FIGURE
 11**



CITY: MPLS DIV/GROUP: IM/DV DB: MG LD: CK MADISON-KIPP
 G:\GIS\Projects\MadisonKipp\ArcMap\2013-11\ProposedPAH_Details_20131114.mxd

LEGEND

- PROPOSED POLYNUCLEAR AROMATIC HYDROCARBON (PAH) SAMPLE LOCATIONS

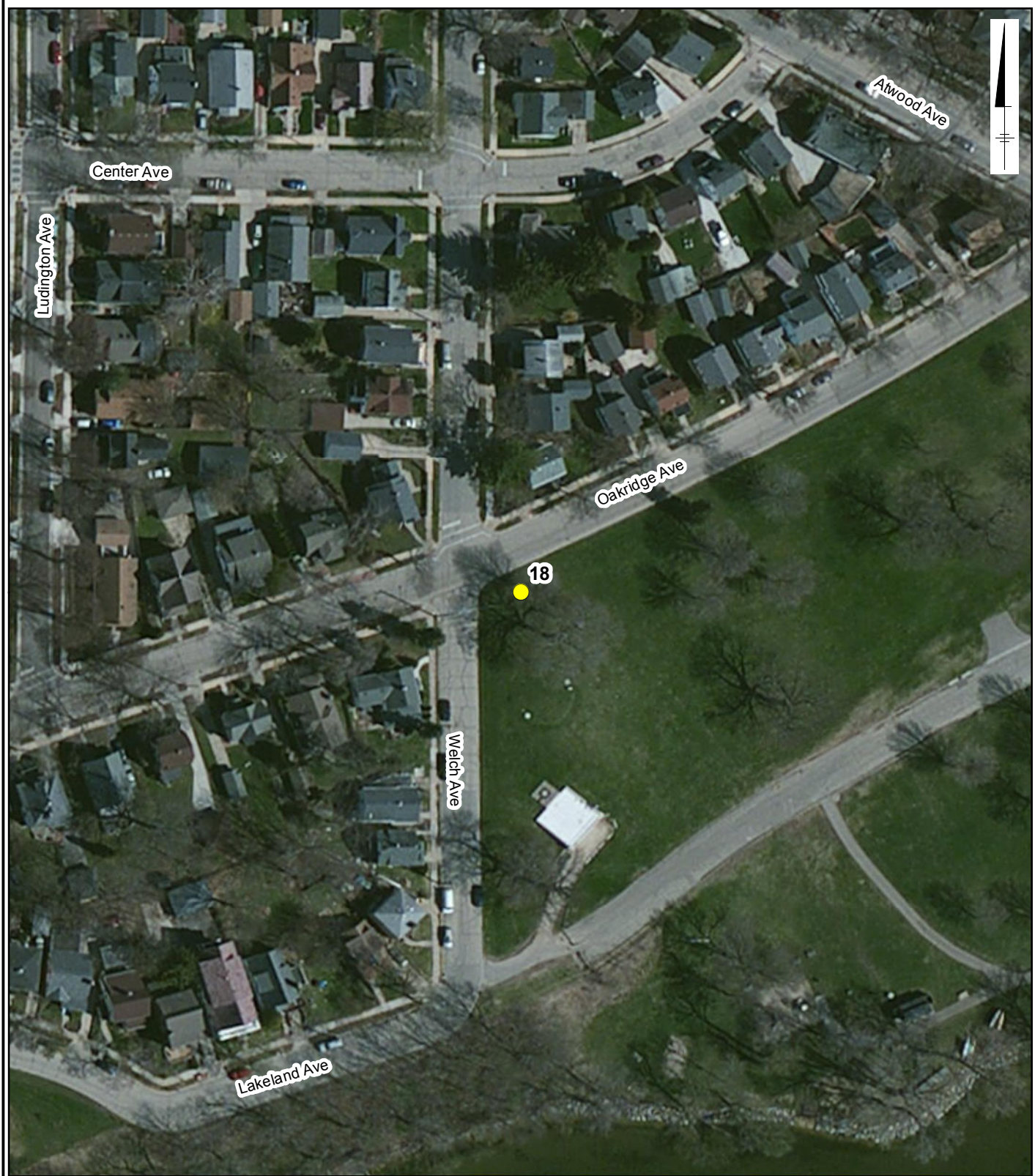


SERVICE LAYER CREDITS: SOURCE: ESRI, DIGITALGLOBE, GEOEYE, I-CUBED, USDA, USGS, AEX, GETMAPPING, AERGRID, IGN, IGP, SWISSTOPO, AND THE GIS USER COMMUNITY

MADISON-KIPP CORPORATION
 201 WAUBESA STREET
 MADISON, WISCONSIN

PROPOSED PAH SOIL SAMPLE LOCATIONS

FIGURE
12

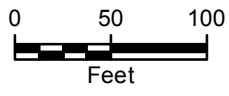


CITY: MPLS DIV/GROUP: IM/DV DB: MG LD: CK MADISON-KIPP
G:\GIS\Projects\MadisonKipp\ArcMap\2013-11\ProposedPAH_Details_20131114.mxd

LEGEND



PROPOSED POLYNUCLEAR AROMATIC
HYDROCARBON (PAH) SAMPLE LOCATIONS



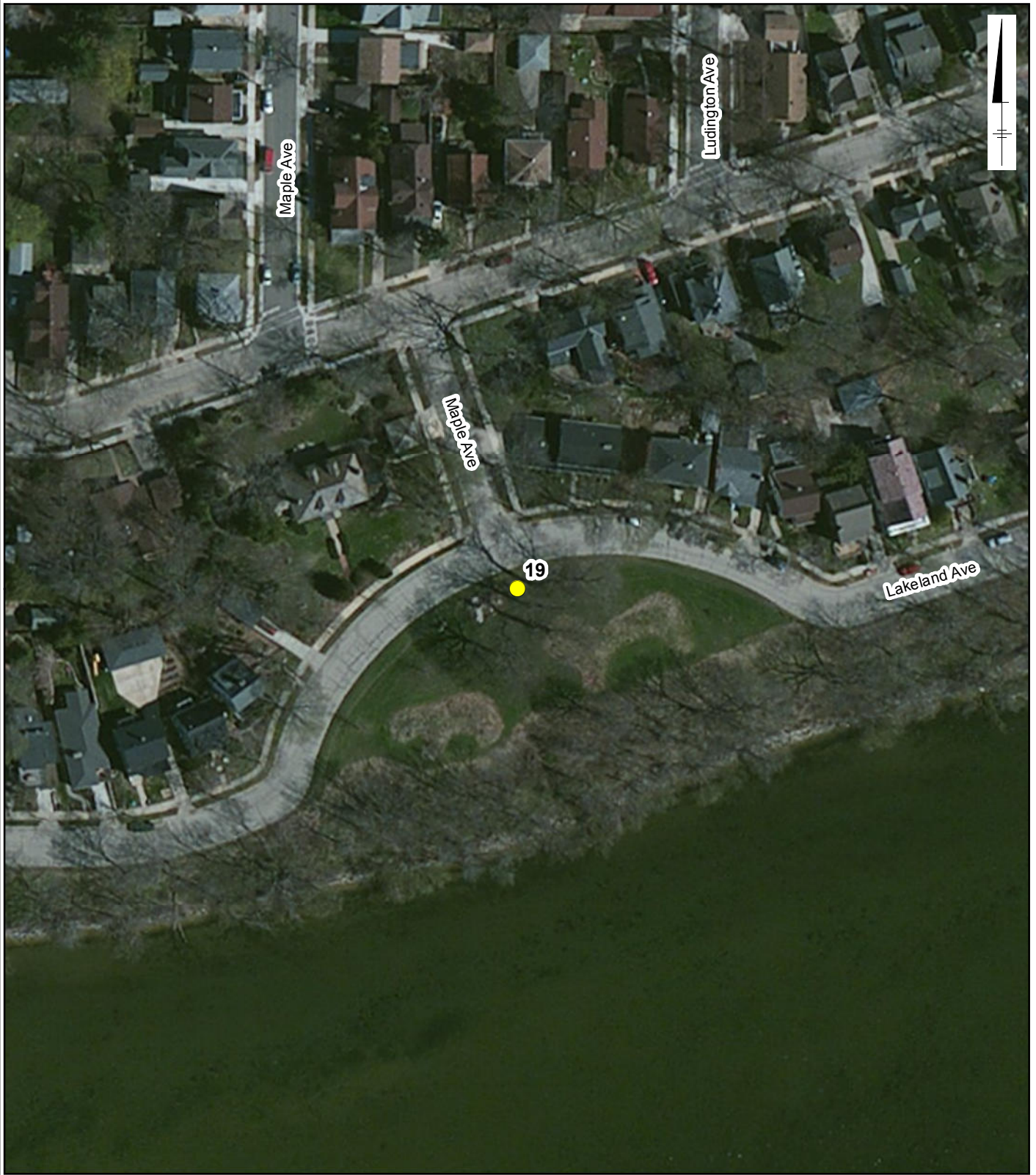
SERVICE LAYER CREDITS: SOURCE: ESRI, DIGITALGLOBE,
GEOEYE, I-CUBED, USDA, USGS, AEX, GETMAPPING, AERGRID,
IGN, IGP, SWISSTOPO, AND THE GIS USER COMMUNITY

MADISON-KIPP CORPORATION
201 WAUBESA STREET
MADISON, WISCONSIN

**PROPOSED PAH SOIL
SAMPLE LOCATIONS**



**FIGURE
13**

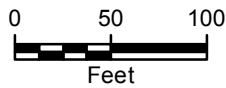


CITY: MPLS DIV/GROUP: IM/DV DB: MG LD: CK MADISON-KIPP
 G:\GIS\Projects\MadisonKipp\ArcMap\2013-11\ProposedPAH_Details_20131114.mxd

LEGEND



PROPOSED POLYNUCLEAR AROMATIC
 HYDROCARBON (PAH) SAMPLE LOCATIONS



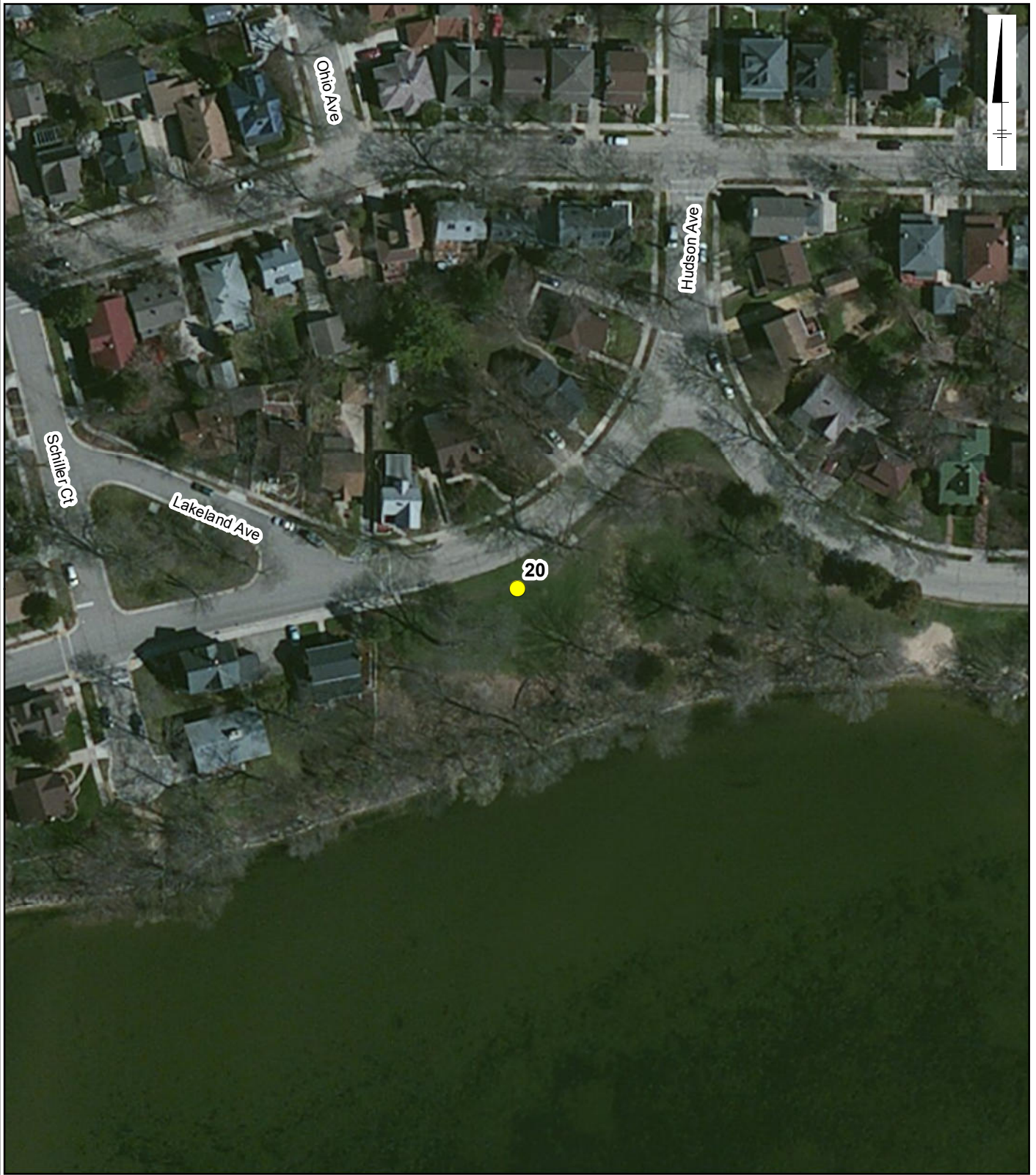
SERVICE LAYER CREDITS: SOURCE: ESRI, DIGITALGLOBE,
 GEOEYE, I-CUBED, USDA, USGS, AEX, GETMAPPING, AEROGRIID,
 IGN, IGP, SWISSTOPO, AND THE GIS USER COMMUNITY

MADISON-KIPP CORPORATION
 201 WAUBESA STREET
 MADISON, WISCONSIN

**PROPOSED PAH SOIL
 SAMPLE LOCATIONS**



**FIGURE
 14**

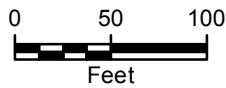


CITY: MPLS DIV/GROUP: IM/DV DB: MG LD: CK MADISON-KIPP
 G:\GIS\Projects\MadisonKipp\ArcMap\2013-11\ProposedPAH_Details_20131114.mxd

LEGEND



PROPOSED POLYNUCLEAR AROMATIC
 HYDROCARBON (PAH) SAMPLE LOCATIONS



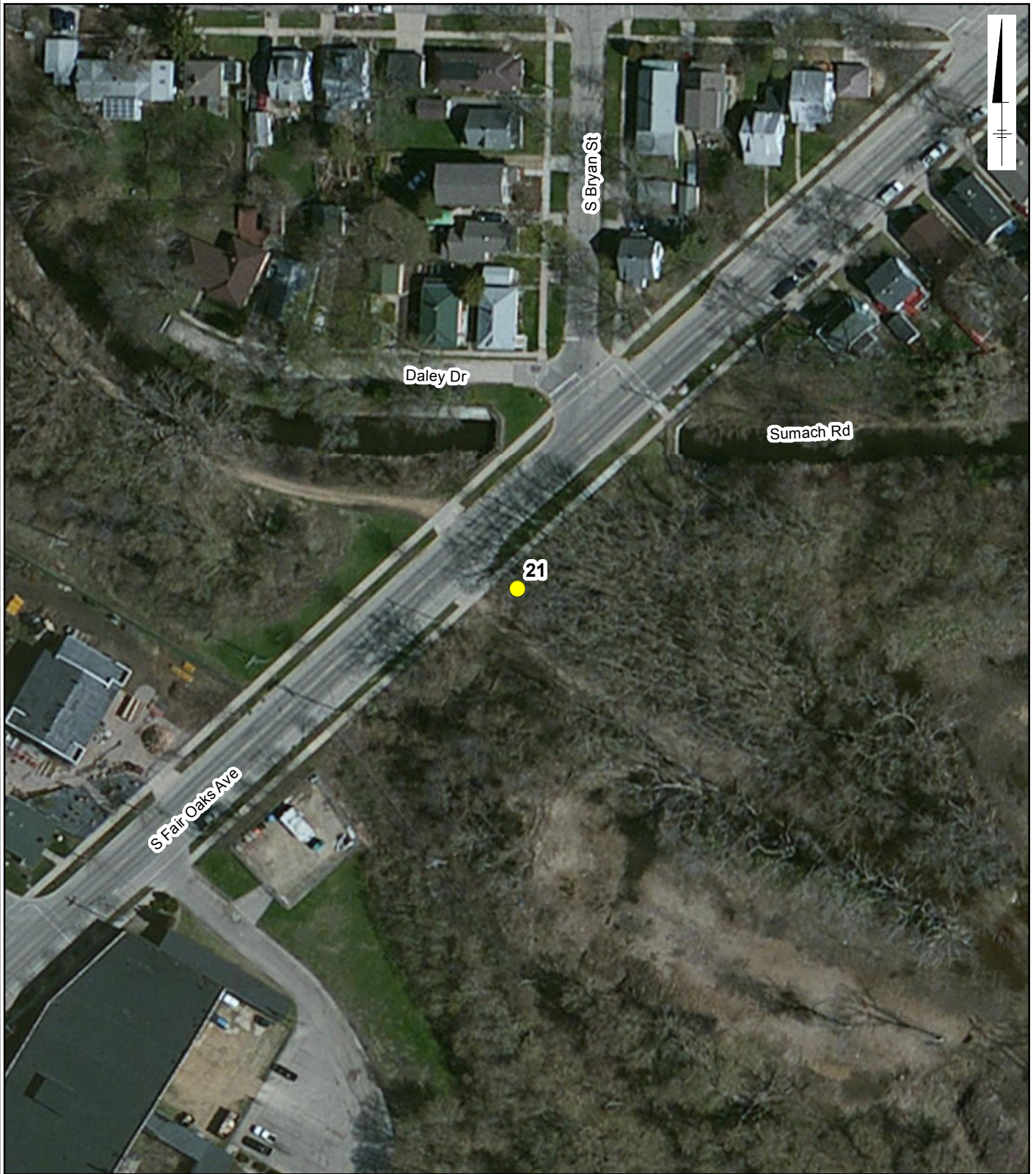
SERVICE LAYER CREDITS: SOURCE: ESRI, DIGITALGLOBE,
 GEOEYE, I-CUBED, USDA, USGS, AEX, GETMAPPING, AEROGRIID,
 IGN, IGP, SWISSTOPO, AND THE GIS USER COMMUNITY

MADISON-KIPP CORPORATION
 201 WAUBESA STREET
 MADISON, WISCONSIN

**PROPOSED PAH SOIL
 SAMPLE LOCATIONS**



**FIGURE
 15**

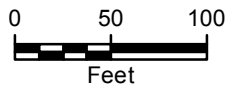


CITY: MPLS DIV/GROUP: IM/DV DB: MG LD: CK MADISON-KIPP
 G:\GIS\Projects\MadisonKipp\ArcMap\2013-11\ProposedPAH_Details_20131114.mxd

LEGEND



PROPOSED POLYNUCLEAR AROMATIC
 HYDROCARBON (PAH) SAMPLE LOCATIONS



SERVICE LAYER CREDITS: SOURCE: ESRI, DIGITALGLOBE,
 GEOEYE, I-CUBED, USDA, USGS, AEX, GETMAPPING, AERGRID,
 IGN, IGP, SWISSTOPO, AND THE GIS USER COMMUNITY

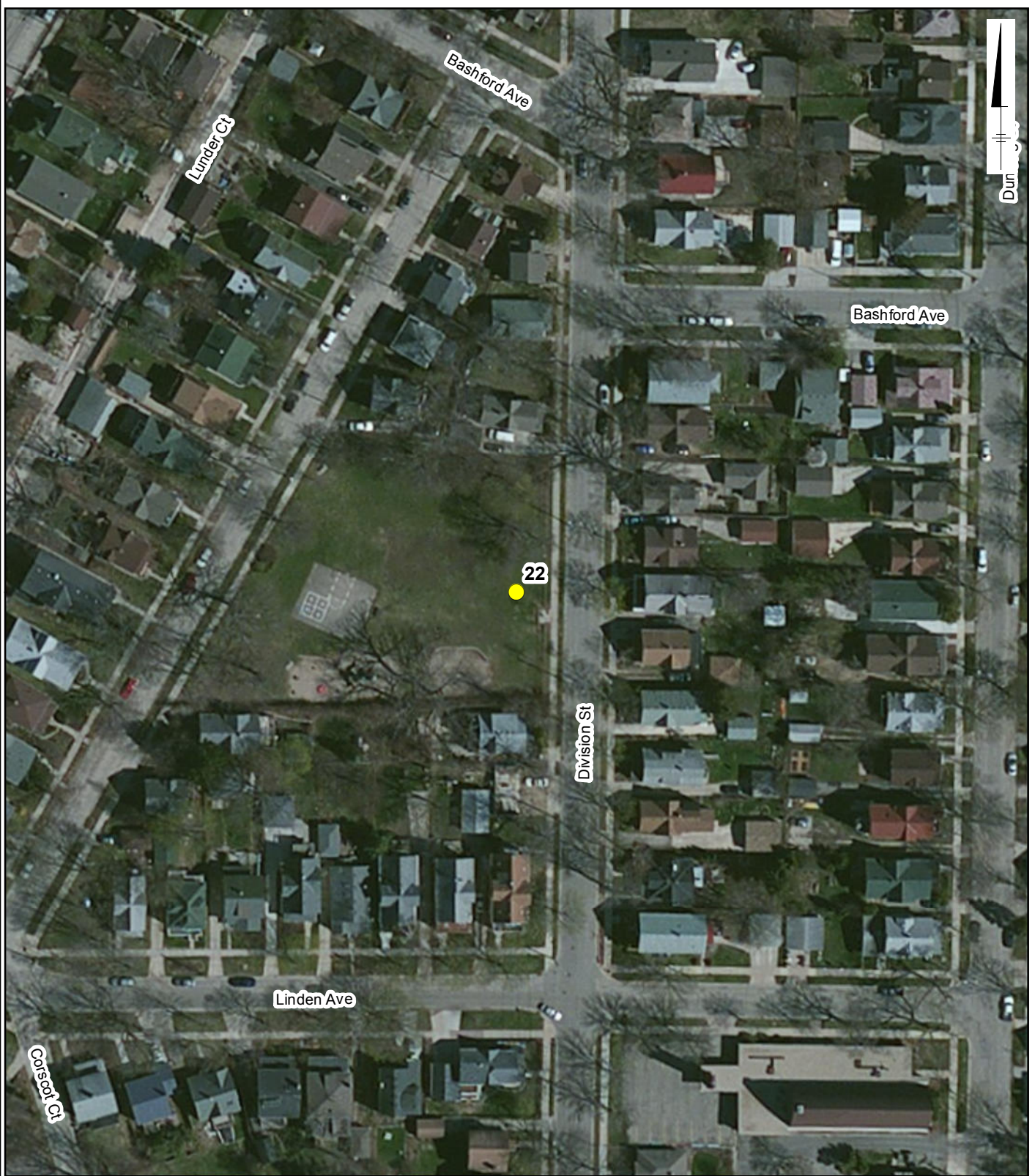
MADISON-KIPP CORPORATION
 201 WAUBESA STREET
 MADISON, WISCONSIN

**PROPOSED PAH SOIL
 SAMPLE LOCATIONS**



**FIGURE
 16**

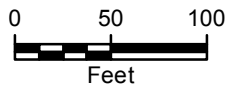
CITY: MPLS DIV/GROUP: IM/DV DB: MG LD: CK MADISON-KIPP
G:\GIS\Projects\MadisonKipp\ArcMap\2013-11\ProposedPAH_Details_20131114.mxd



LEGEND



PROPOSED POLYNUCLEAR AROMATIC
HYDROCARBON (PAH) SAMPLE LOCATIONS



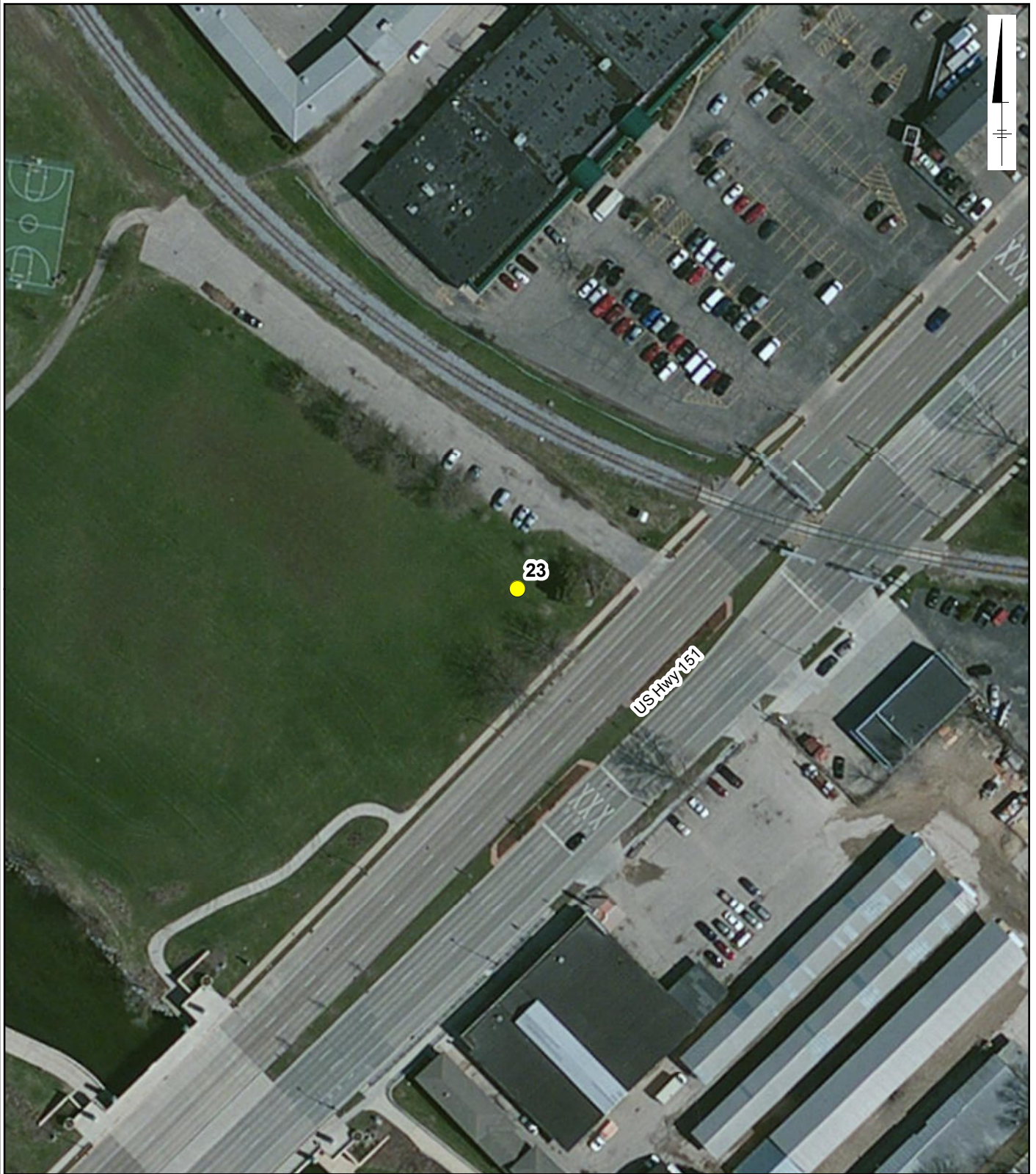
SERVICE LAYER CREDITS: SOURCE: ESRI, DIGITALGLOBE,
GEOEYE, I-CUBED, USDA, USGS, AEX, GETMAPPING, AEROGRIID,
IGN, IGP, SWISSTOPO, AND THE GIS USER COMMUNITY

MADISON-KIPP CORPORATION
201 WAUBESA STREET
MADISON, WISCONSIN

**PROPOSED PAH SOIL
SAMPLE LOCATIONS**



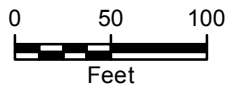
FIGURE
17



CITY: MPLS DIV/GROUP: IM/DV DB: MG LD: CK MADISON-KIPP
 G:\GIS\Projects\MadisonKipp\ArcMap2013-11\ProposedPAH_Details_20131114.mxd

LEGEND

- PROPOSED POLYNUCLEAR AROMATIC HYDROCARBON (PAH) SAMPLE LOCATIONS



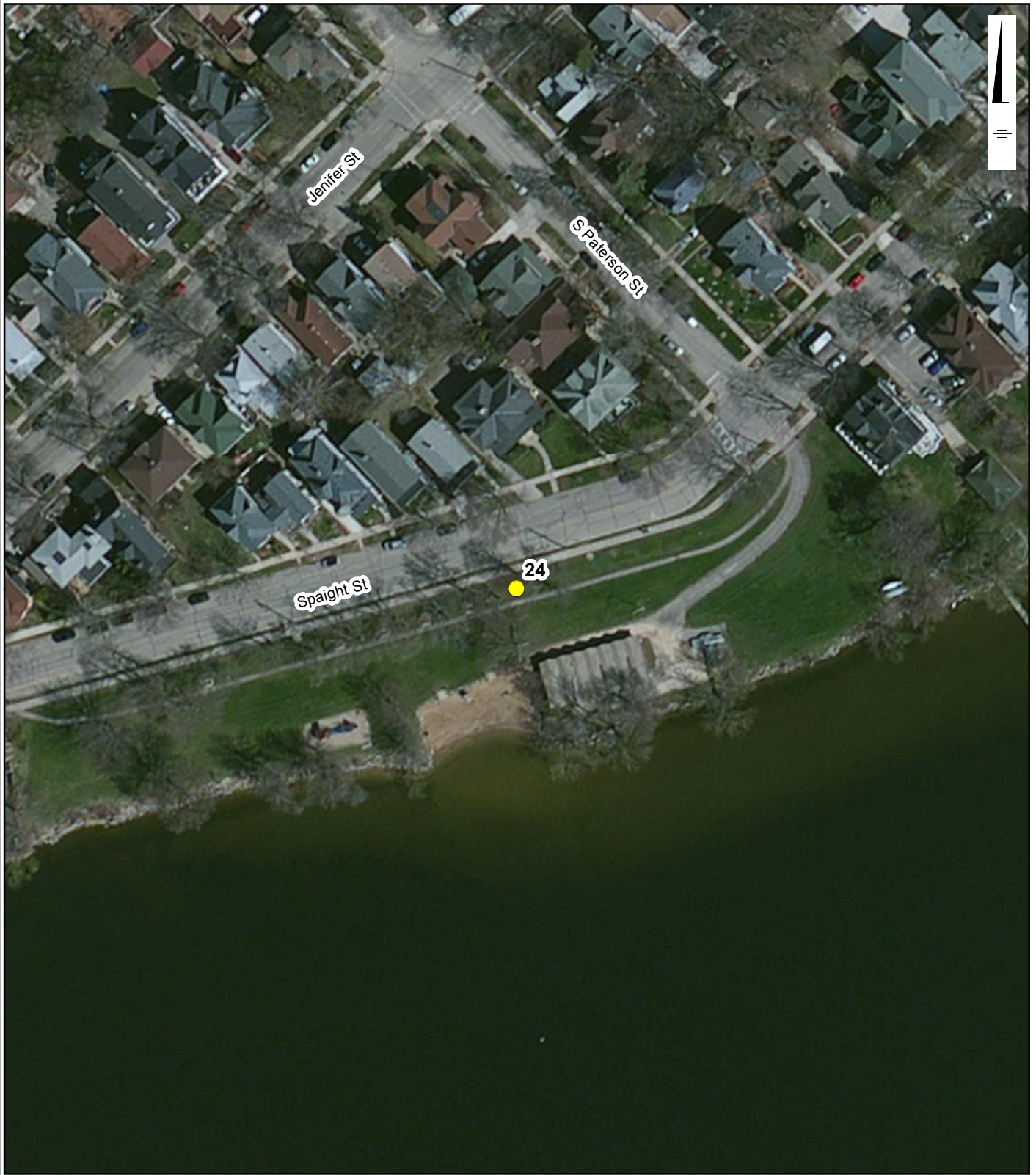
SERVICE LAYER CREDITS: SOURCE: ESRI, DIGITALGLOBE, GEOEYE, I-CUBED, USDA, USGS, AEX, GETMAPPING, AEROGRIID, IGN, IGP, SWISSTOPO, AND THE GIS USER COMMUNITY

MADISON-KIPP CORPORATION
 201 WAUBESA STREET
 MADISON, WISCONSIN

**PROPOSED PAH SOIL
 SAMPLE LOCATIONS**



**FIGURE
 18**

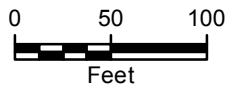


CITY: MPLS DIV/GROUP: IM/DV DB: MG LD: CK MADISON-KIPP
 G:\GIS\Projects\MadisonKipp\ArcMap2013-11\ProposedPAH_Details_20131114.mxd

LEGEND



PROPOSED POLYNUCLEAR AROMATIC
HYDROCARBON (PAH) SAMPLE LOCATIONS



SERVICE LAYER CREDITS: SOURCE: ESRI, DIGITALGLOBE,
GEOEYE, I-CUBED, USDA, USGS, AEX, GETMAPPING, AEROGRIID,
IGN, IGP, SWISSTOPO, AND THE GIS USER COMMUNITY

MADISON-KIPP CORPORATION
201 WAUBESA STREET
MADISON, WISCONSIN

**PROPOSED PAH SOIL
SAMPLE LOCATIONS**

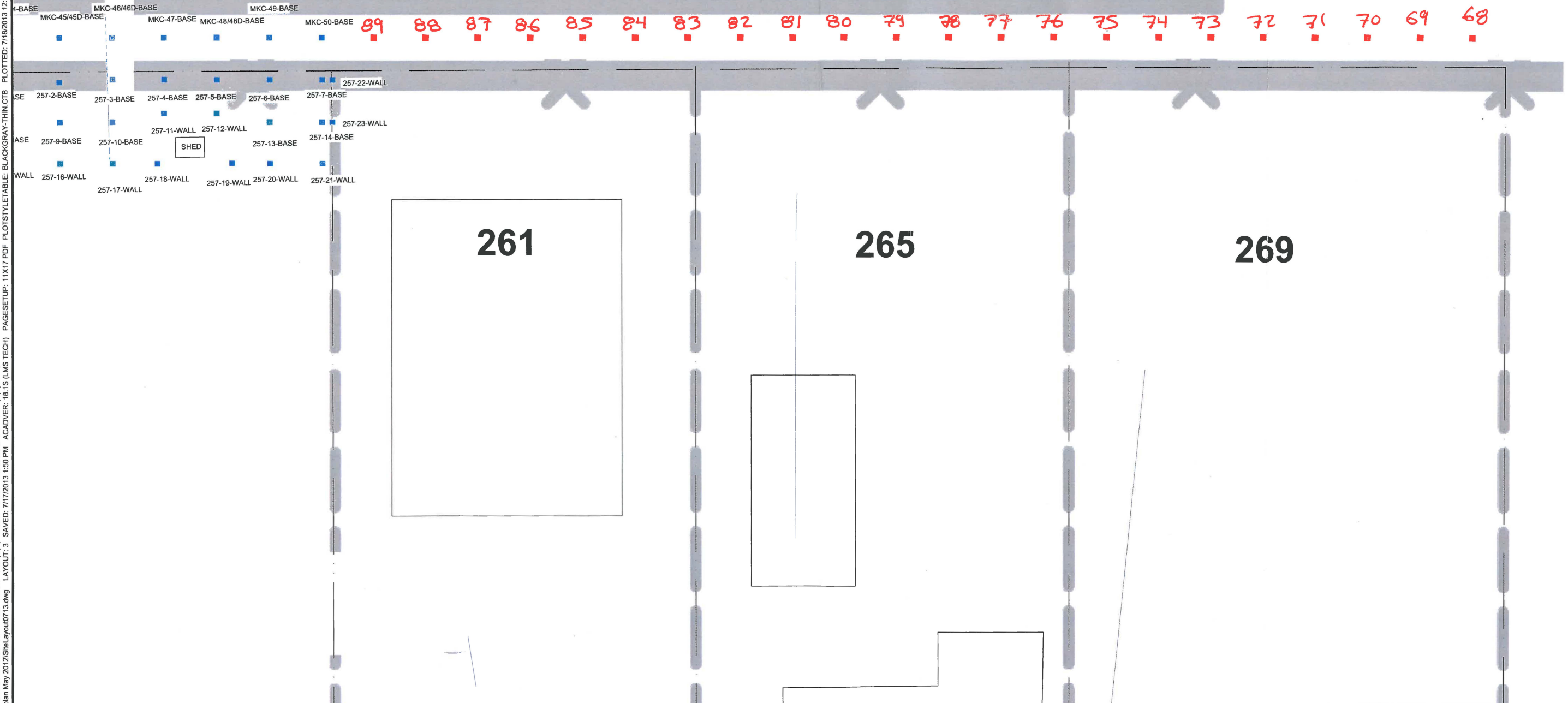


**FIGURE
19**

MADISON-KIPP CORPORATION BUILDING



CITY: MILWAUKEE DIV: GROUP-ENVIRONMENT DB: R. ROBBENNOLT LD: J. TRASK PIC: (Oh) PM: J. TRASK TMC: KUBACKI LVR: (Oh) ON: OFF-REF
 G:\Project\MadisonKipp\1001283\lead\PCB Workplan May 2012\Site\Layout0713.dwg LAYOUT: 3 SAVED: 7/17/2013 1:50 PM ACADVER: 18.1S (LMS TECH) PAGESETUP: 11X17 PLOTSTYLETABLE: BLACKGRAY-THIN.CTB PLOTTED: 7/18/2013 12:11 PM BY: ROBBENNOLT, REBECCA
 XREFS: IMAGES: PROJECTNAME:



261

265

269

AERIAL IMAGERY OBTAINED FROM BING IMAGERY SERVICE THROUGH ESRI ONLINE MAPPING, ACCESSED 7/11/12



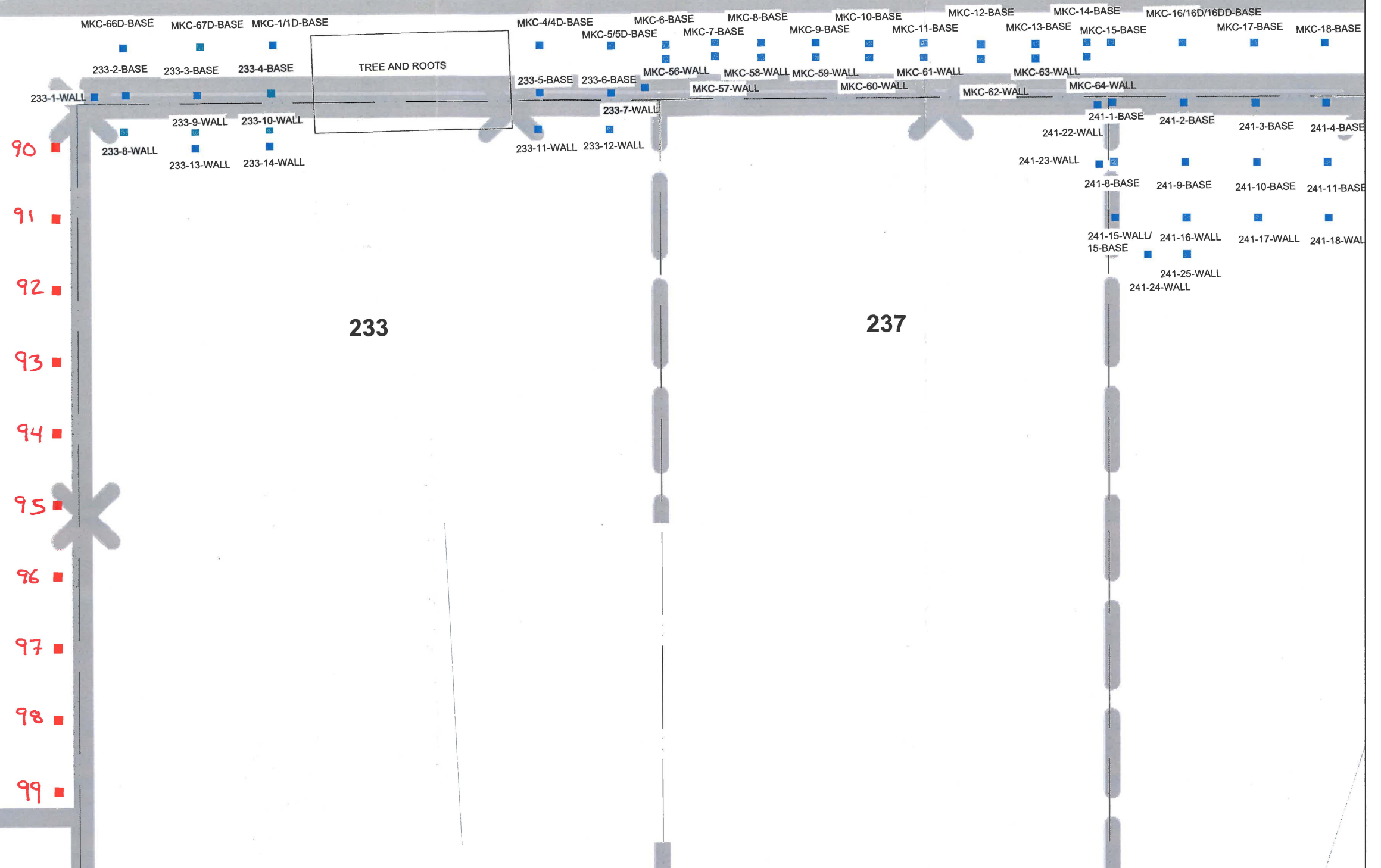
- PROPERTY LINE
- PROPOSED SOIL BORING LOCATION
- EXISTING CONFIRMATION SOIL SAMPLE LOCATION

MADISON-KIPP CORPORATION 201 WAUBESA STREET MADISON, WISCONSIN	
PROPOSED SOIL BORING LOCATIONS, ADJACENT TO 261, 265, AND 269 WAUBESA STREET	
	FIGURE 3

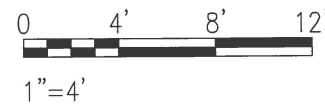
MADISON-KIPP CORPORATION BUILDING

233

237



AERIAL IMAGERY OBTAINED FROM BING IMAGERY SERVICE THROUGH ESRI ONLINE MAPPING, ACCESSED 7/11/12



PROPERTY LINE

PROPOSED SOIL BORING LOCATION

EXISTING CONFIRMATION SOIL SAMPLE LOCATION

MADISON KIPP CORPORATION
201 WAUBESA STREET
MADISON, WISCONSIN

**PROPOSED SOIL BORING LOCATIONS,
NORTH OF 233 WAUBESA STREET**



FIGURE

2