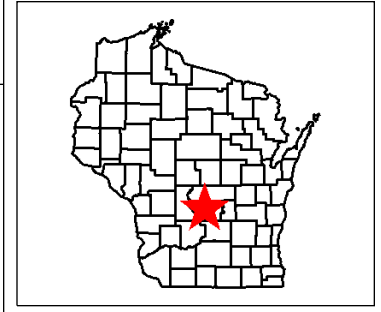
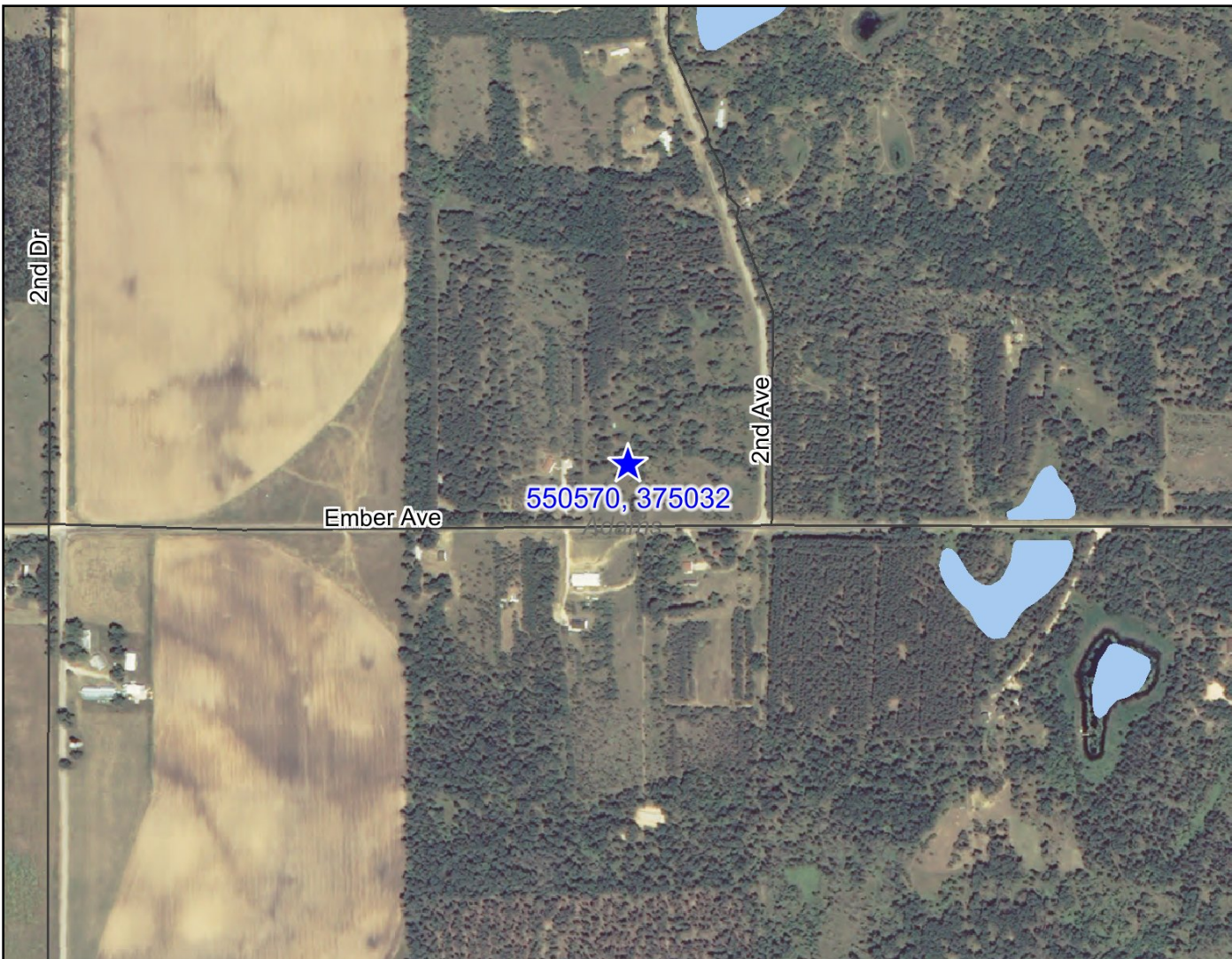


20110607WC011 DMA WIS ANG 115FW - F-16 CRASH



Legend

- Open Sites (ongoing cleanups)
- Open Sites (ongoing cleanups) - site boundaries shown
- Closed Sites (completed cleanups)
- Closed Sites (completed cleanups) - site boundaries shown
- County Boundary
- Railroads
- County Roads (WDOT)
- County Trunk Highway
- State and U.S. Highways (WDOT)
- State Trunk Highway
- US Highway
- Interstate Highways (WDOT)
- Interstate Highway
- Local Roads (WDOT)
- Civil Towns
- Civil Town
- 24K Open Water
- 24K Rivers and Shorelines
- Municipalities



Map created on Jul 18, 2011
 Note: Not all RR Sites have been geo-located yet.



This map is a user generated static output from an Internet mapping site and is for general reference only. Data layers that appear on this map may or may not be accurate, current, or otherwise reliable. THIS MAP IS NOT TO BE USED FOR NAVIGATION.

Notes: Map Created on Jul 18, 2011