

From: Schultz, Josie M - DNR
Sent: Wednesday, November 2, 2022 4:07 PM
To: Dillon Plamann
Subject: RE: Bay Towel - Solvent Investigation, BRRTS #02-05-237064

Hi Dillon,

Sanitary sewer manhole locations look acceptable. Please note that investigations are iterative and if vapor concentrations are detected greater than 10% of the SSGSL at any of these locations, then additional sampling may be warranted.

Please accept this email as your notice to proceed with the sanitary vapor investigation.

Thanks,
Josie

We are committed to service excellence.

Visit our survey at <http://dnr.wi.gov/customersurvey> to evaluate how I did.

Josie Schultz

Cell Phone: (920) 366-5685

Josie.Schultz@Wisconsin.gov



From: Dillon Plamann <dplamann@fehrgraham.com>
Sent: Wednesday, November 2, 2022 3:00 PM
To: Schultz, Josie M - DNR <josie.schultz@wisconsin.gov>
Subject: RE: Bay Towel - Solvent Investigation, BRRTS #02-05-237064

**CAUTION: This email originated from outside the organization.
Do not click links or open attachments unless you recognize the sender and know the content is safe.**

Good afternoon Josie,

After further review and discussion, we have made revisions to our sanitary sewer vapor investigation work plan. The updated plan is as follows:

We have finished determining the locations for the sanitary sewer vapor investigation samples (see attached map). Two upgradient sample points, and one downgradient sample point is marked on the map. Sanitary sewer vapor investigation samples will be collected in accordance with RR-649 guidance.

For the sanitary sewer samples, the vapor samples will be collected by first removing the cover to insert the tubing at the appropriate place to collect a vapor sample with in the headspace of the conduit. Once the tubing is installed, each conduit will be allowed to equilibrate for at least an hour. After the conduits equilibrate, vapor samples will be collected via a 1 L summa grab sample. The vapor samples will be submitted to the lab for analysis of CVOCs (PCE, TCE, cis- & trans-DCE, & VC) via TO-15.

Please confirm that the sample locations for the sanitary vapor investigation are acceptable and provide any additional feedback.

Thank you,

DILLON PLAMANN, PG | Project Hydrogeologist
Fehr Graham | Engineering & Environmental

909 North 8th Street, Suite 101
Sheboygan, WI 53081
C: 920.946.2407
fehrgraham.com

From: Dillon Plamann
Sent: Friday, September 30, 2022 10:17 AM
To: Schultz, Josie M - DNR <josie.schultz@wisconsin.gov>
Subject: Bay Towel - Solvent Investigation, BRRTS #02-05-237064

Good morning Josie,

We have finished determining the locations for the sanitary sewer vapor investigation samples (see attached map). One upgradient, and two downgradient sample points are marked on the map. Sanitary sewer vapor investigation samples will be collected in accordance with RR-649 guidance.

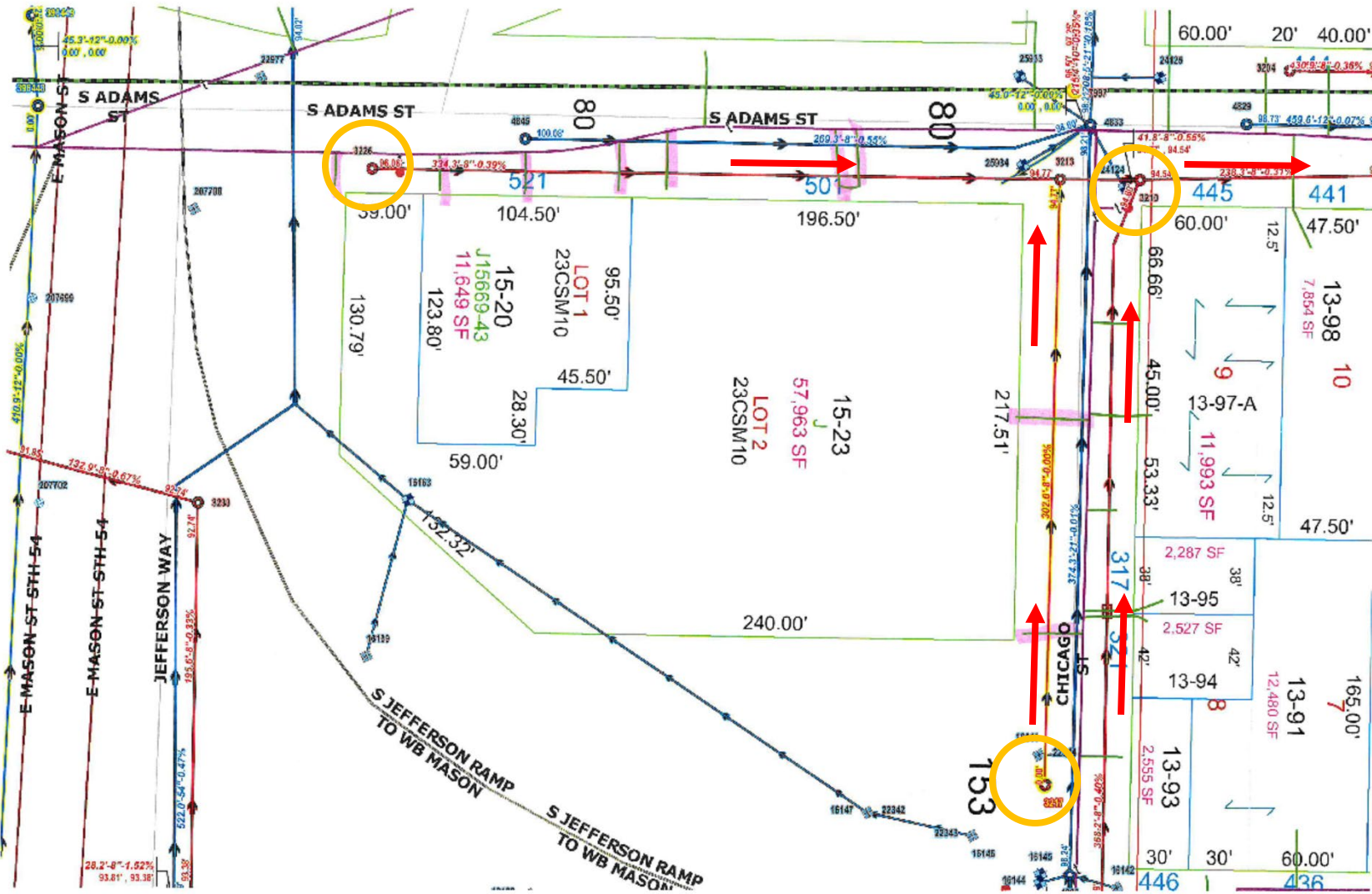
For the sanitary sewer samples, the vapor samples will be collected by first removing the cover to insert the tubing at the appropriate place to collect a vapor sample with in the headspace of the conduit. Once the tubing is installed, each conduit will be allowed to equilibrate for at least an hour. After the conduits equilibrate, vapor samples will be collected via a 1 L summa grab sample. The vapor samples will be submitted to the lab for analysis of CVOCs (PCE, TCE, cis- & trans-DCE, & VC) via TO-15.

Please confirm that the sample locations for the sanitary vapor investigation are acceptable and provide any additional feedback.

Thank you,

DILLON PLAMANN, PG | Project Hydrogeologist
Fehr Graham | Engineering & Environmental

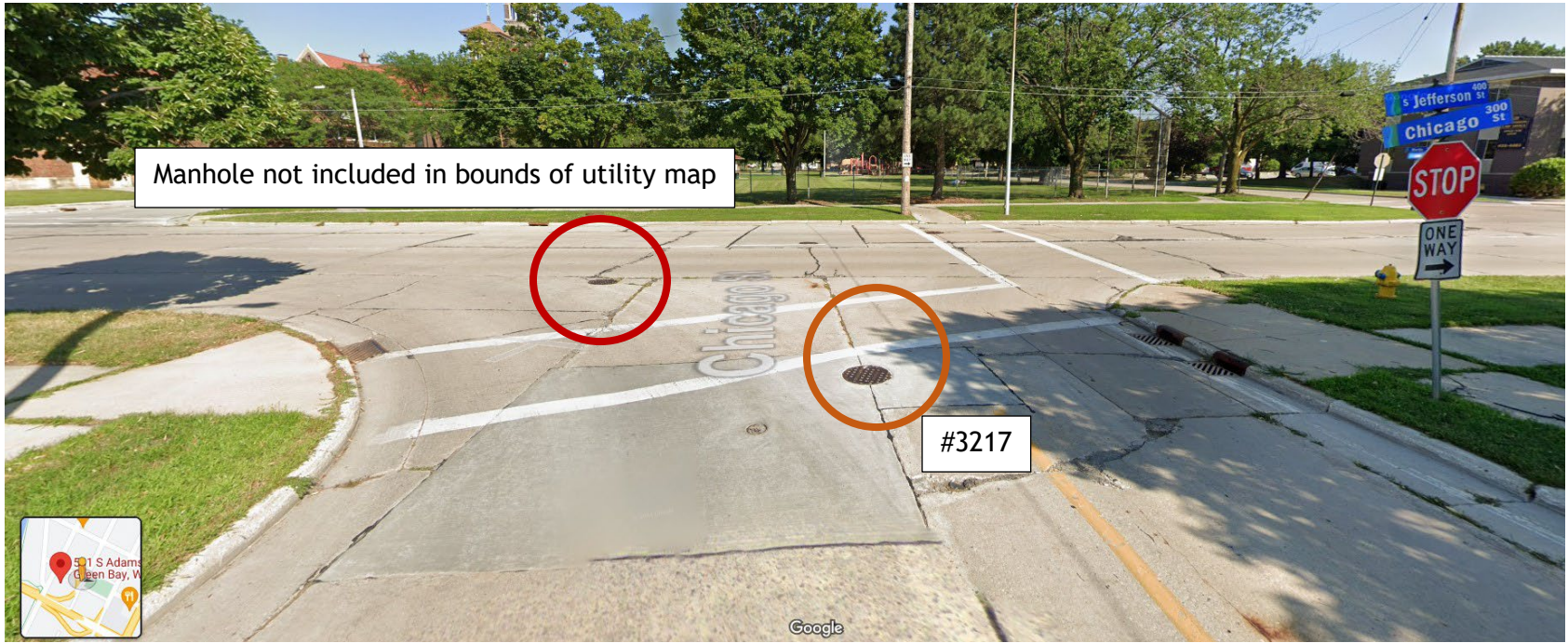
909 North 8th Street, Suite 101
Sheboygan, WI 53081
C: 920.946.2407
fehrgraham.com



Sanitary Sewer Main - Manhole Vapor Sample Points

#3217 & #3226 (upgradient) & #3210 (downgradient)

Sanitary Sewer System flow direction →



Manhole not included in bounds of utility map

#3217



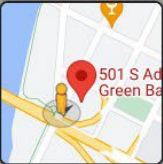
Google



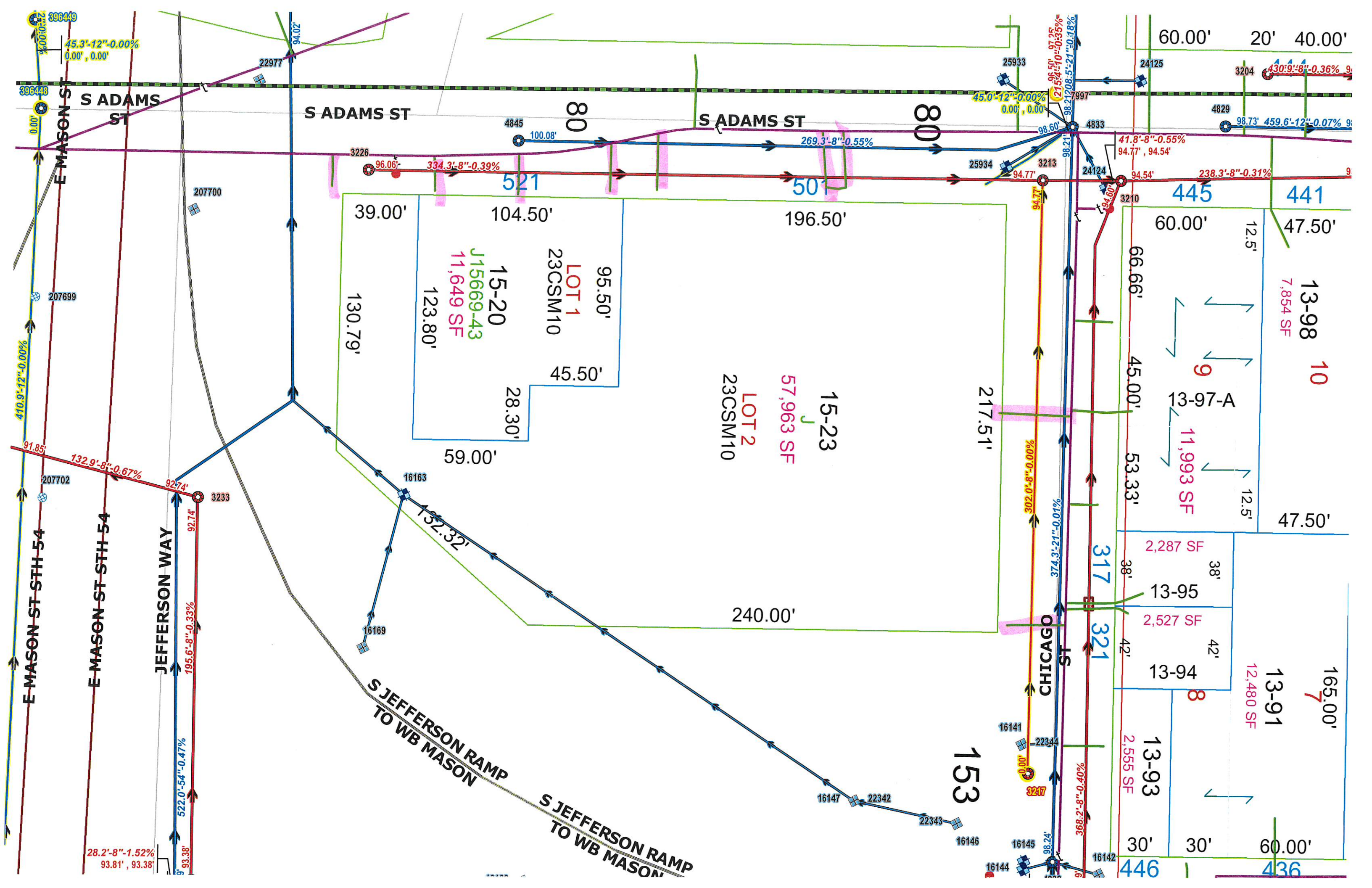


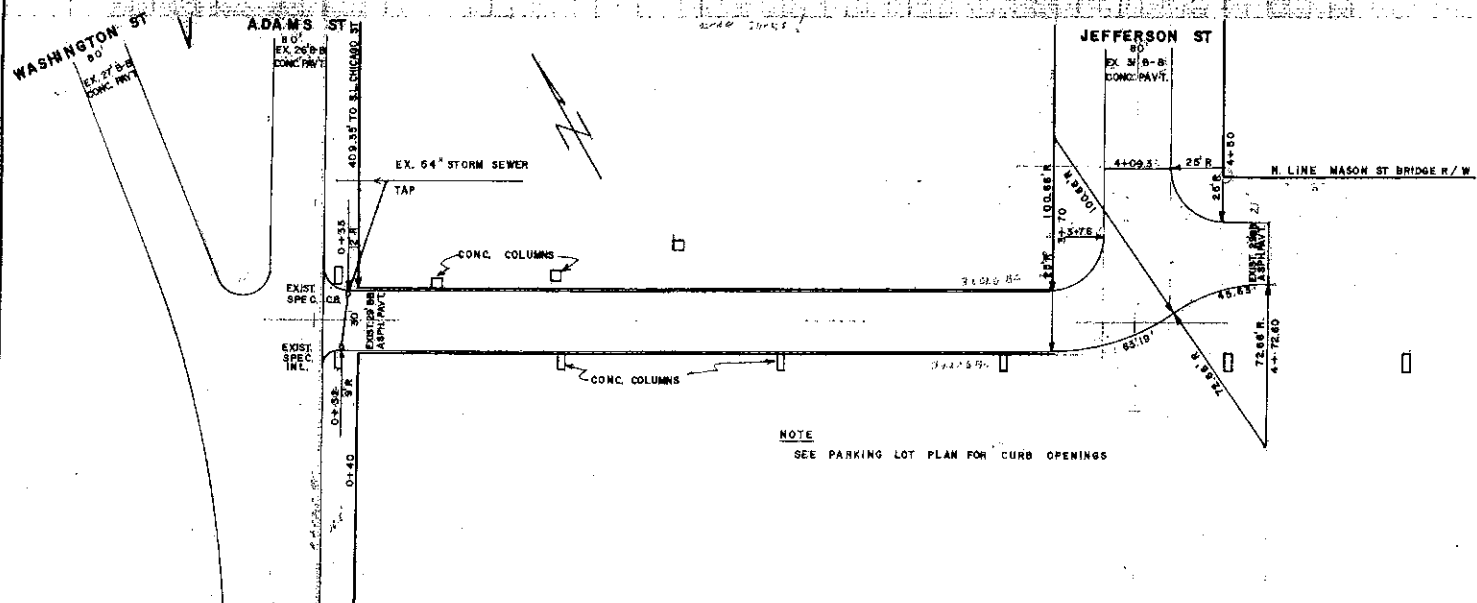
Bay Towel Site Pre-Demolition

#3226

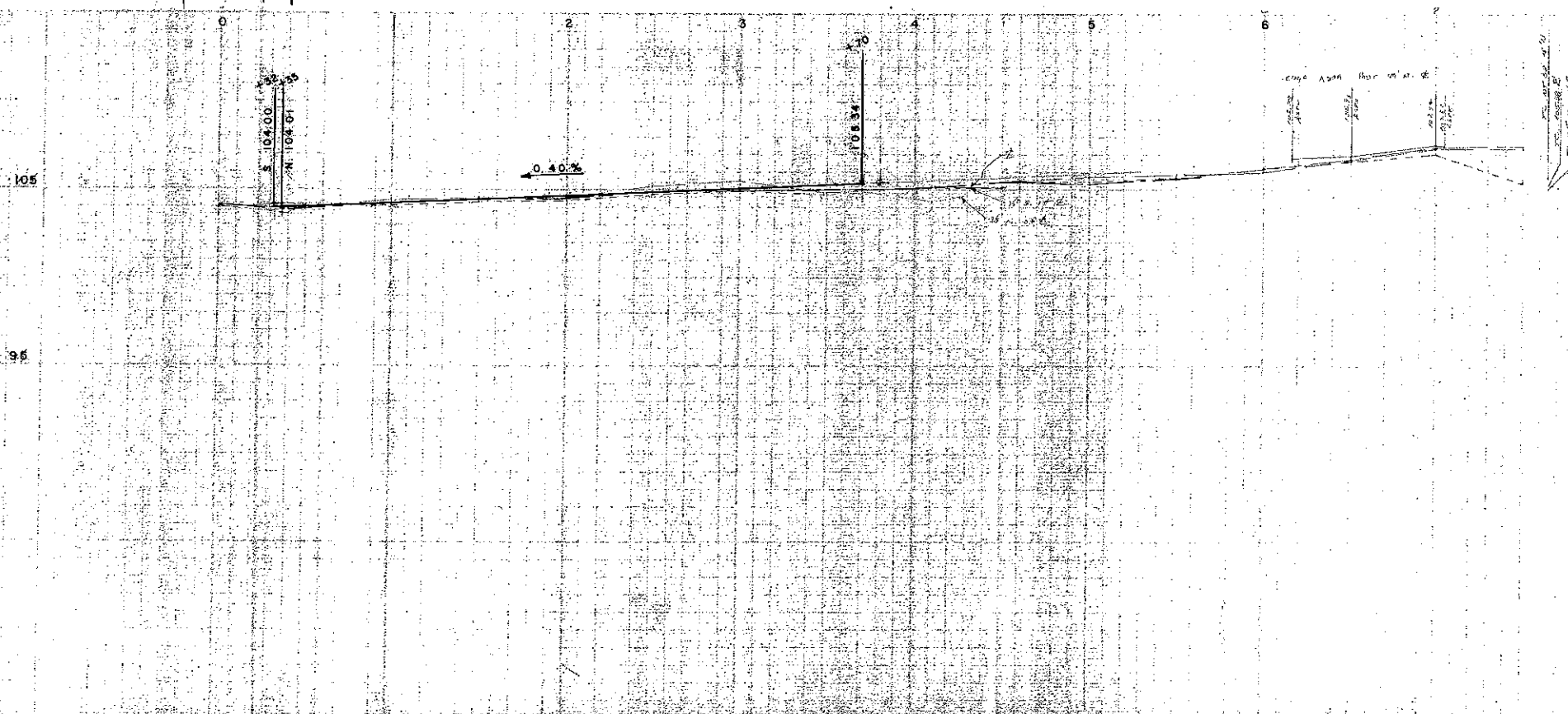


Google

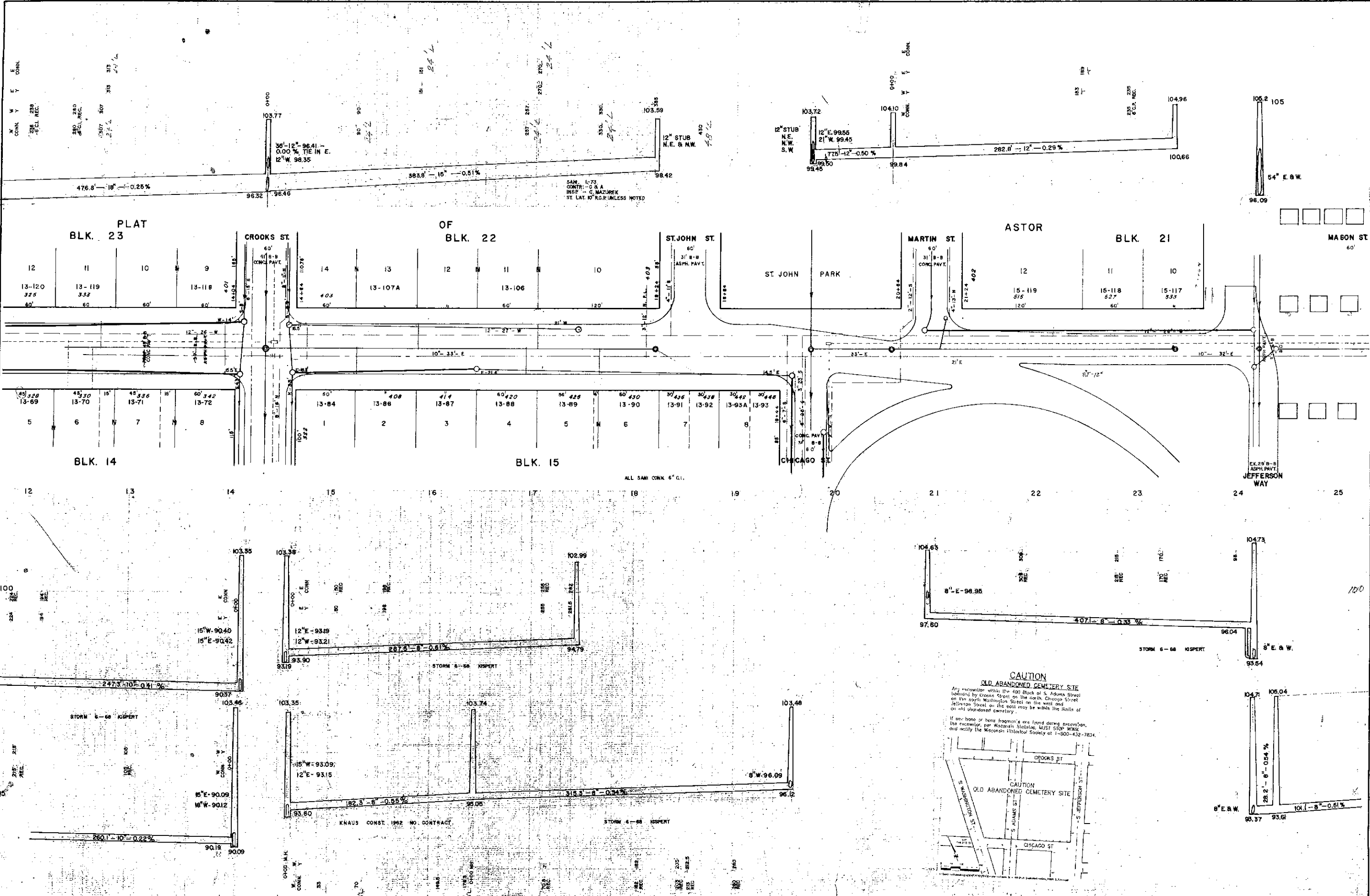




NOTE
SEE PARKING LOT PLAN FOR CURB OPENINGS



SCALE VERT. - 1" = 4' HOR. - 1" = 40'	LEGEND PROPOSED SEWER ——— EXISTING SEWER ——— GAS MAIN ——— WATER MAIN ——— TELEPHONE CONDUIT ———	NOTE BOOKS SURVEY ——— CONSTR. ———	APPROVED CITY ENGINEER MAYOR	CITY OF GREEN BAY, WISCONSIN OFFICE OF THE CITY ENGINEER		ON JEFFERSON WAY FROM ADAMS ST TO JEFFERSON ST		SHEET NO.
				DRAWER NO.	FILE NO.	DRAWN BY		



SCALE
 VERT. - 1" = 4'
 HOR. - 1" = 40'

LEGEND

NOTE BOOKS	SURVEY	CONST.
PAVEMENT		
SHOWWALK		
SAINT SEWER	18" A.G. S-1	
STORM SEW.	24" C-1	

APPROVED

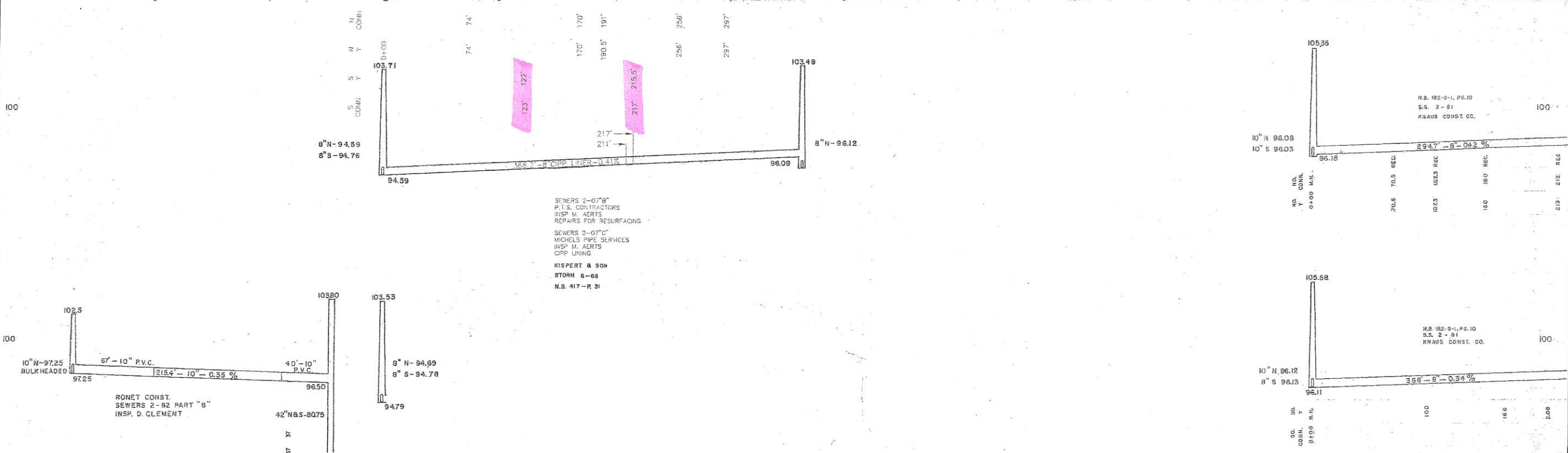
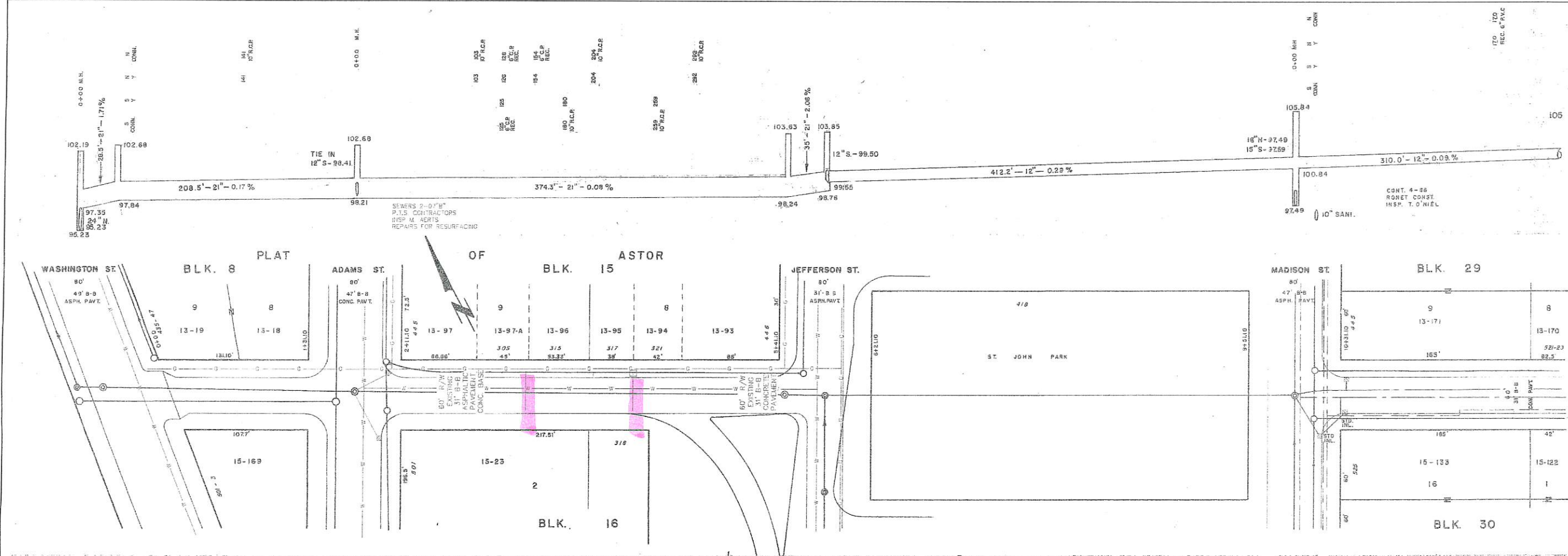
CITY ENGINEER
MAYOR

CITY OF GREEN BAY, WISCONSIN
 OFFICE OF THE CITY ENGINEER

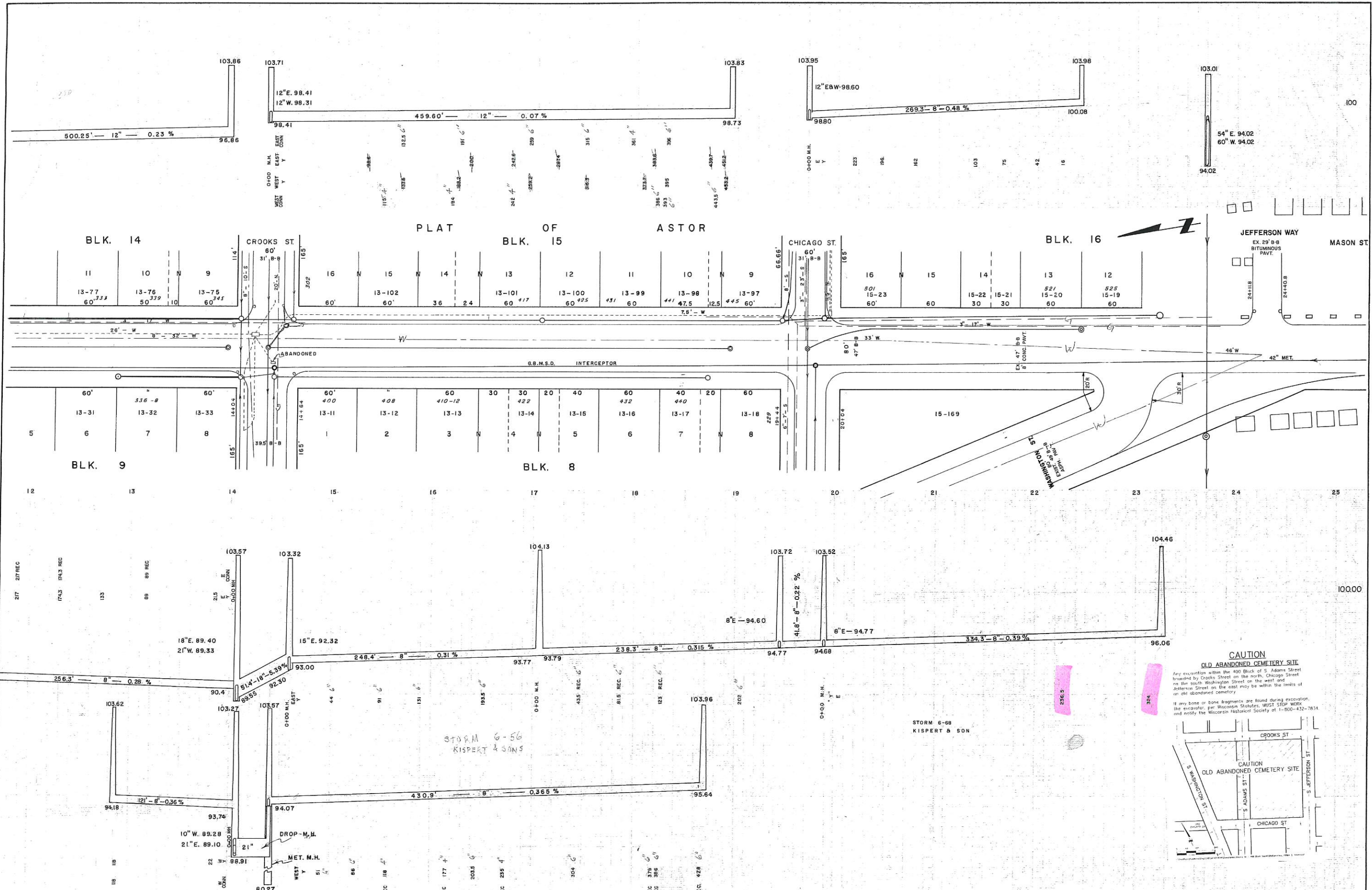
ON JEFFERSON ST STREET
 FROM S. OF STUART TO MASON

SHEET NO.	16
DRAWER NO.	75
FILE NO.	
DRAWN BY	SP

CAUTION
 OLD ABANDONED CEMETERY SITE
 Any excavator within the 400' block of S. Adams Street bounded by Crooks Street on the north, Chicago Street on the south, Washington Street on the west and Jefferson Street on the east may be within the limits of an old abandoned cemetery.
 If any home or home fragments are found during excavation, the excavator, per Wisconsin Statutes, MUST STOP WORK and notify the Wisconsin Historical Society at 1-800-432-7834.



SCALE VERT. 1"=4' HOR. 1"=40'	NOTEBOOKS LIBRARY NO. PAVEMENT SANI. SEWER STORM SEWER RIGHT OF WAY	SURVEY AS BUILTS 182A.GI 235C1	CITY OF GREEN BAY, WISCONSIN DEPT. OF PUBLIC WORKS- ENGINEERING DIVISION	CHICAGO STREET FROM WASHINGTON STREET TO MADISON STREET	<table border="1"> <tr> <th>BY</th> <th>DATE</th> <th>REVISIONS</th> </tr> <tr> <td>CMA</td> <td>12/06</td> <td>PAVEMENT-DESIGN</td> </tr> <tr> <td>CMA</td> <td>1/19/07</td> <td>CHECKED</td> </tr> <tr> <td>MMA</td> <td>12/06</td> <td>SEWER-DESIGN</td> </tr> <tr> <td>MH</td> <td>2/07</td> <td>CHECKED</td> </tr> <tr> <td>CMA</td> <td>11/07</td> <td>AS-BUILTS</td> </tr> </table>	BY	DATE	REVISIONS	CMA	12/06	PAVEMENT-DESIGN	CMA	1/19/07	CHECKED	MMA	12/06	SEWER-DESIGN	MH	2/07	CHECKED	CMA	11/07	AS-BUILTS	<table border="1"> <tr> <th>BY</th> <th>DATE</th> <th>REVISIONS</th> </tr> <tr> <td>CMA</td> <td>12/06</td> <td>ADDED CONNECTIONS</td> </tr> </table>	BY	DATE	REVISIONS	CMA	12/06	ADDED CONNECTIONS	PAGE NO.
BY	DATE	REVISIONS																													
CMA	12/06	PAVEMENT-DESIGN																													
CMA	1/19/07	CHECKED																													
MMA	12/06	SEWER-DESIGN																													
MH	2/07	CHECKED																													
CMA	11/07	AS-BUILTS																													
BY	DATE	REVISIONS																													
CMA	12/06	ADDED CONNECTIONS																													



CAUTION
OLD ABANDONED CEMETERY SITE
 Any excavation within the 400 Block of S. Adams Street bounded by Crooks Street on the north, Chicago Street on the south, Jefferson Street on the west and Jefferson Street on the east may be within the limits of an old abandoned cemetery.
 If any bone or bone fragments are found during excavation, the excavator, per Wisconsin Statutes, MUST STOP WORK and notify the Wisconsin Historical Society at 1-800-432-7814.



SCALE VERT. - 1" = 4' HOR. - 1" = 40' <small>D. E. Smith, Chicago</small>	LEGEND 	NOTE BOOKS SURVEY: 182-A, 182-G CONST.: 182-G-1	APPROVED CITY ENGINEER MAYOR	CITY OF GREEN BAY, WISCONSIN OFFICE OF THE CITY ENGINEER	ON ADAMS STREET FROM STUART TO MASON	SHEET NO. DRAWER NO. FILE NO. DRAWN BY
		217 REC 174.5 REC 133 89 REC 215 18"E. 89.40 21"W. 89.33 103.57 103.32 104.13 103.72 103.52 104.46 103.96 103.86 103.71 103.83 103.95 103.98 103.01	11 10 9 16 15 14 13 12 11 10 9 16 15 14 13 12 13-77 13-76 13-75 13-102 13-101 13-99 13-98 13-97 13-31 13-32 13-33 13-11 13-12 13-13 13-14 13-15 13-16 13-17 13-18 15-169 15-23 15-22 15-21 15-20 15-19 501 521 525	217 REC 174.5 REC 133 89 REC 215 18"E. 89.40 21"W. 89.33 103.57 103.32 104.13 103.72 103.52 104.46 103.96 103.86 103.71 103.83 103.95 103.98 103.01	217 REC 174.5 REC 133 89 REC 215 18"E. 89.40 21"W. 89.33 103.57 103.32 104.13 103.72 103.52 104.46 103.96 103.86 103.71 103.83 103.95 103.98 103.01	CITY OF GREEN BAY, WISCONSIN OFFICE OF THE CITY ENGINEER