

From: Dillon Plamann <dplamann@fehrgraham.com>
Sent: Friday, September 30, 2022 10:17 AM
To: Schultz, Josie M - DNR
Subject: Bay Towel - Solvent Investigation, BRRS #02-05-237064
Attachments: Bay Towel Sanitary Sewer Sample Location Manholes.pdf

**CAUTION: This email originated from outside the organization.
Do not click links or open attachments unless you recognize the sender and know the content is safe.**

Good morning Josie,

We have finished determining the locations for the sanitary sewer vapor investigation samples (see attached map). One upgradient, and two downgradient sample points are marked on the map. Sanitary sewer vapor investigation samples will be collected in accordance with RR-649 guidance.

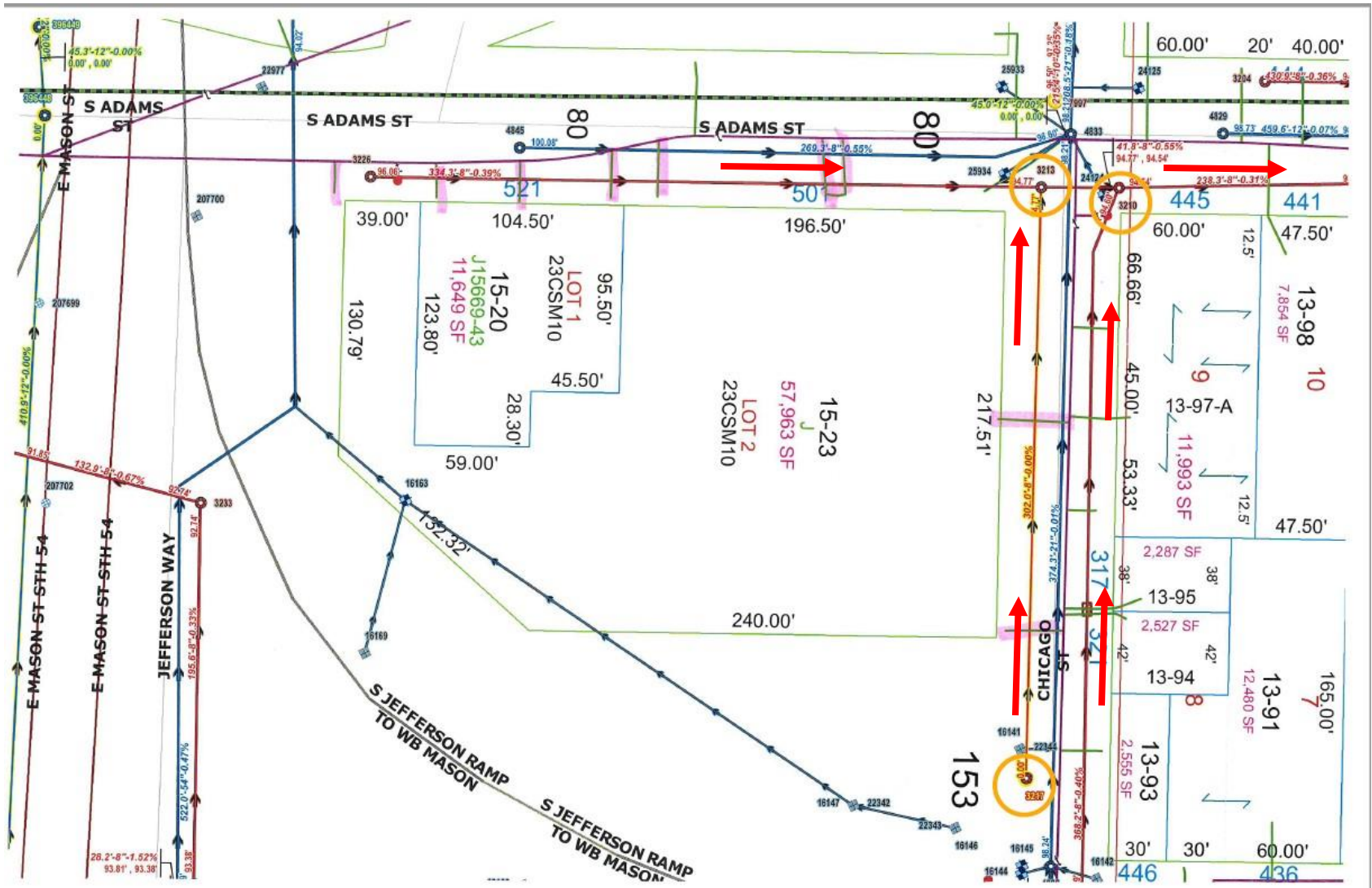
For the sanitary sewer samples, the vapor samples will be collected by first removing the cover to insert the tubing at the appropriate place to collect a vapor sample with in the headspace of the conduit. Once the tubing is installed, each conduit will be allowed to equilibrate for at least an hour. After the conduits equilibrate, vapor samples will be collected via a 1 L summa grab sample. The vapor samples will be submitted to the lab for analysis of CVOCs (PCE, TCE, cis- & trans-DCE, & VC) via TO-15.

Please confirm that the sample locations for the sanitary vapor investigation are acceptable and provide any additional feedback.

Thank you,

DILLON PLAMANN, PG | Project Hydrogeologist
Fehr Graham | Engineering & Environmental

909 North 8th Street, Suite 101
Sheboygan, WI 53081
C: 920.946.2407
fehrgraham.com



Sanitary Sewer Main - Manhole Vapor Sample Points

#3217 (upgradient), # 3213 & #3210 (downgradient)

Sanitary Sewer System flow direction →



Manhole not included in bounds of utility map

#3217



Google



#3213



#3210



Google



Google