



WISCONSIN DEPARTMENT OF NATURAL RESOURCES

Fisheries Information Sheet

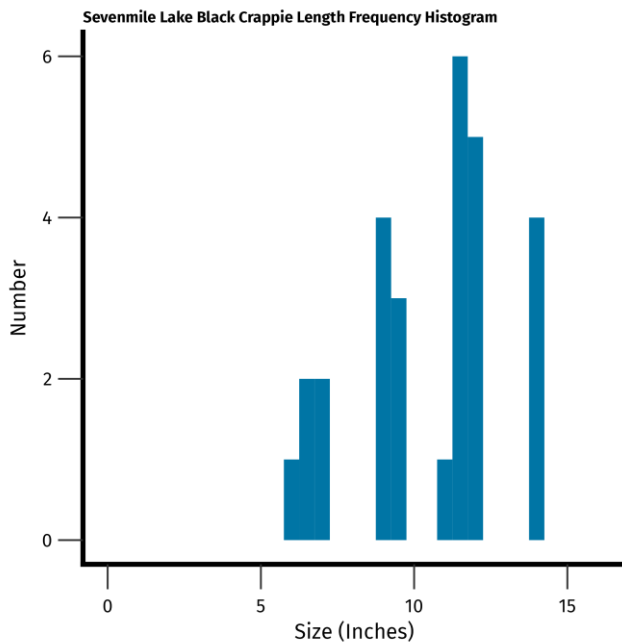
LAKE: Sevenmile Lake

COUNTY: Oneida

YEAR: 2022

Introduction

The U.S. Forest Service assessed the panfish fishery of Sevenmile Lake in June. Sevenmile Lake is a drainage lake with 503 surface acres, 6.1 miles of shoreline and a maximum depth of 43 feet. Eight fyke nets were set and checked daily for three consecutive days.



BLACK CRAPPIE



A total of 28 black crappies were captured while surveying Sevenmile Lake. Lengths varied between 6.0 to 14.0 inches, with a mean length of 10.5 inches. A quality size structure was found, with 82% of the black crappies measuring 8 inches or greater.

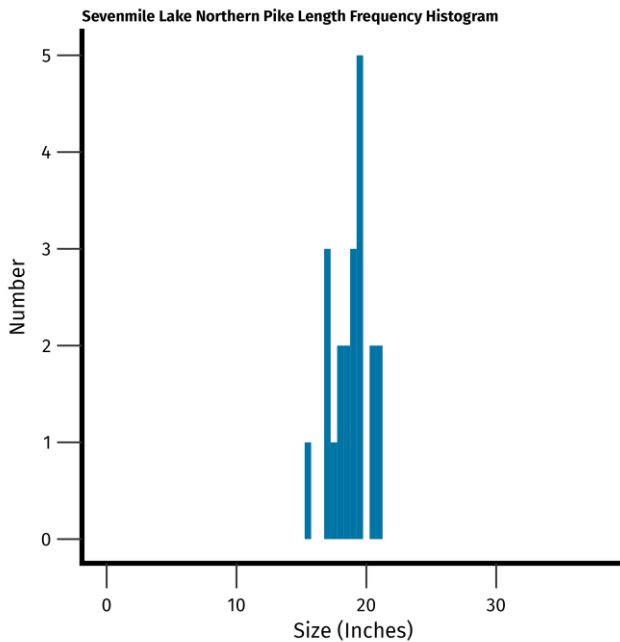
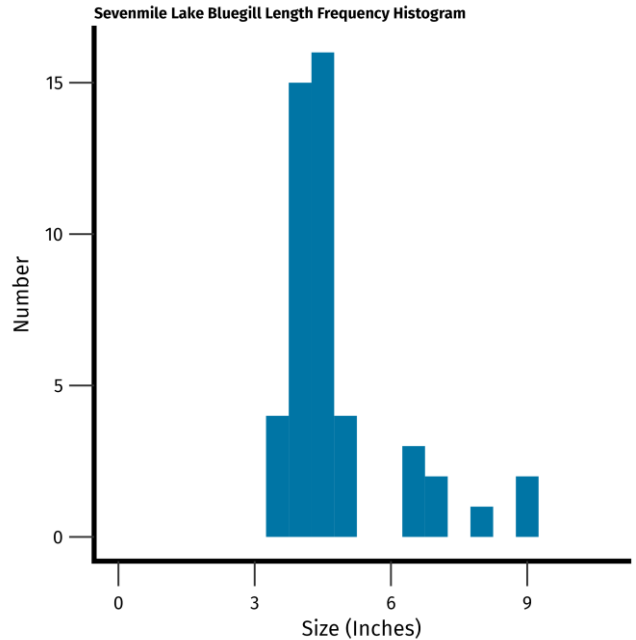
1.2 Captured Per Net Night \geq 5 inches	
Quality Size \geq 8 inches	0.6
Preferred Size \geq 10 inches	0.3

BLUEGILL



A total of 47 bluegills were captured while surveying Sevenmile Lake. Lengths varied between 3.5 inches to 9.0 inches, with a mean length of 4.8 inches. A small size structure of bluegills was found, with 17 % being 6 inches or greater.

2.0 Captured Per Net Night \geq 3 inches	
Quality Size \geq 6 inches	0.6
Preferred Size \geq 8 inches	0.1



NORTHERN PIKE



A total of 21 northern pike were captured while surveying Sevenmile Lake. Lengths varied between 15.5 inches to 21.2 inches, with a mean length of 18.8 inches. A small size structure was found, with 9% of measured northern pike being 21 inches or greater.

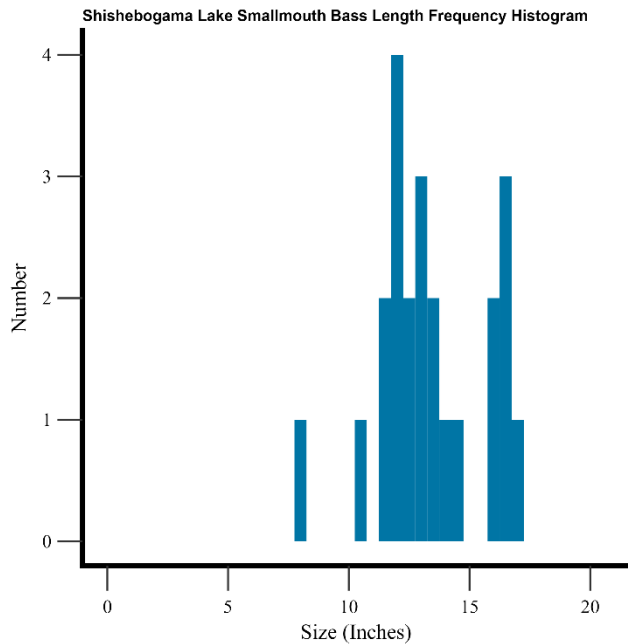
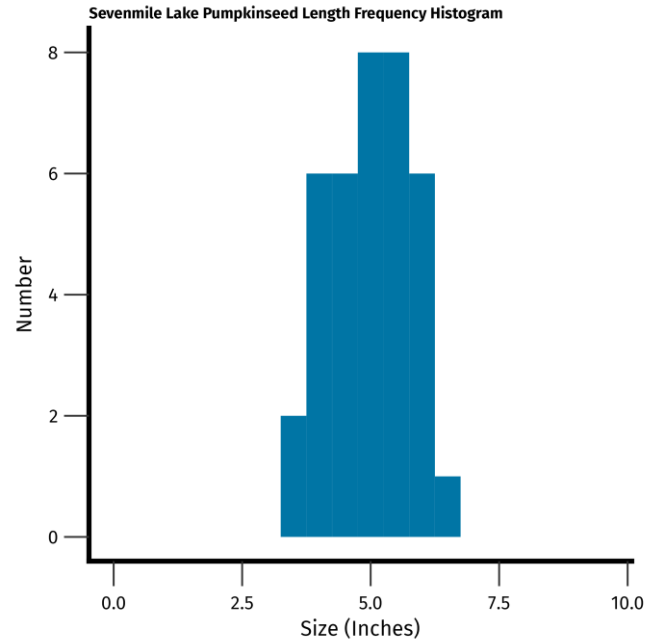
0.9 Captured Per Net Night \geq 14 inches	
Quality Size \geq 21 inches	0.1
Preferred Size \geq 28 inches	0.0

PUMPKINSEED



A total of 37 pumpkinseeds were captured while surveying Sevenmile Lake. Lengths varied between 3.5 inches to 6.5 inches, with a mean length of 5.0 inches. A small size structure was found, with 0% of pumpkinseeds being 8 inches or greater.

1.5 Captured Per Net Night \geq 3 inches	
Quality Size \geq 6 inches	0.3
Preferred Size \geq 8 inches	0.0



SMALLMOUTH BASS



A total of 16 smallmouth bass were captured while surveying Sevenmile Lake despite not typically being captured well in fyke nets. Lengths varied between 6.9 inches to 19.0 inches, with a mean length of 12.8 inches. A decent size structure was found, with 37.5% of smallmouth bass being 14 inches or greater.

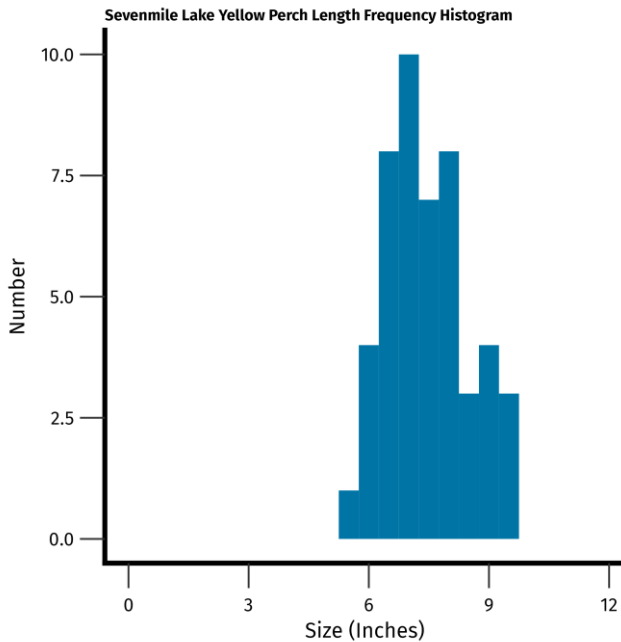
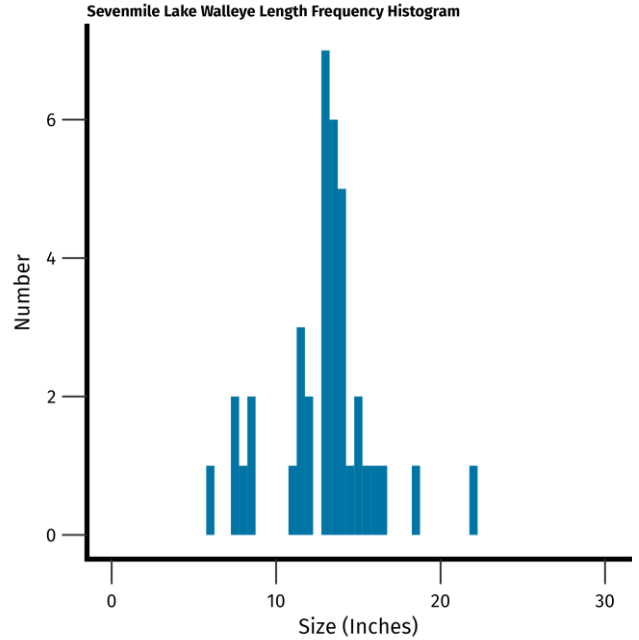
0.6 Captured Per Net Night \geq 7 inches	
Quality Size \geq 11 inches	0.6
Preferred Size \geq 14 inches	0.3

WALLEYE



A total of 38 walleye were captured while surveying Sevenmile Lake. Lengths varied between 6.0 inches to 21.9 inches, with a mean length of 12.9 inches. A smaller size structure was found, with 13.2% of walleye being 15 inches or greater.

1.3 Captured Per Net Night \geq 10 inches	
Quality Size \geq 15 inches	0.2
Preferred Size \geq 20 inches	0.1



YELLOW PERCH



A total of 48 yellow perch were captured while surveying Sevenmile Lake. Lengths varied between 5.5 inches to 9.9 inches, with a mean length of 7.5 inches. A small size structure was found, with 0% of yellow perch being 10 inches or greater.

2 Captured Per Net Night \geq 5 inches	
Quality Size \geq 8 inches	0.8
Preferred Size \geq 10 inches	0.0

OTHER SPECIES

Other species encountered included muskellunge (3) that varied between 12.0 inches to 24.2 inches, rock bass (119) varying being between 3.0 inches and 10.0 inches, black bullheads (18) and white suckers (21).

Summary

Sevenmile Lake is a cool dark lake with a mixed fishery that can be accessed by a boat ramp off of Boat Landing Road on the west side of the lake or off NF 2415 Road on the east side of the lake. Eleven unique species were captured during the fyke net survey. Panfish appear to be generally of smaller size, potentially being controlled by the numerous predator species present in Sevenmile Lake, such as largemouth bass, smallmouth bass and walleye. Walleye have been regularly stocked since 2017 through private and DNR funds. Sevenmile Lake is scheduled to be sampled again in 2034.

Table 1. General fishing regulations for Sevenmile Lake, in Oneida Wisconsin.

SPECIES	SEASON DATES	DAILY BAG LIMIT	SIZE LIMIT
Largemouth bass	May to mid-June	5	14" minimum length
Largemouth bass and smallmouth bass	Mid-June to March	5	14" minimum length
Northern Pike	May to March	5	No minimum length
Panfish	Open All Year	25	No minimum length
Rock bass	Open All Year	Unlimited	No minimum length
Smallmouth bass	May to mid-June	Catch and release only	Catch and release only
Walleye	May to March	3, only 1 over 24"	15" minimum, 20-24" protected slot

Acknowledgements

For answers to questions about fisheries management activities on Sevenmile Lake, contact:

Jake Carleen

U.S. Forest Service
500 Hanson Lake Road
Rhineland, WI 54501
715-362-1371
Jake.Carleen@usda.gov

Nathan J. Lederman

Wisconsin Department of Natural Resources
107 Sutliff Ave
Rhineland, WI 54501
715-525-2898
nathaniel.lederman@wisconsin.gov